

RIVERSIDE AVE. CHAMBLIN AVE. DEL-RAY CT.			
DRAW NO	SHEET	TOTAL	SHEET
NUMBER	NUMBER	SHEETS	BOOK
375-A	1	1	403
DRAWN BY	CHECKED BY	APPROVED BY	
REAR			

# PLAN & PROFILE OF SEWER

TO BE CONSTRUCTED IN  
 RIVERSIDE AVE. CHAMBLIN AVE. & DEL-RAY CT.  
 R/W LOTS 7 & 8 DEL-RAY TRACT  
 ENGINEERING DEPT. RIVERSIDE, CALIF. MAY, 1945.

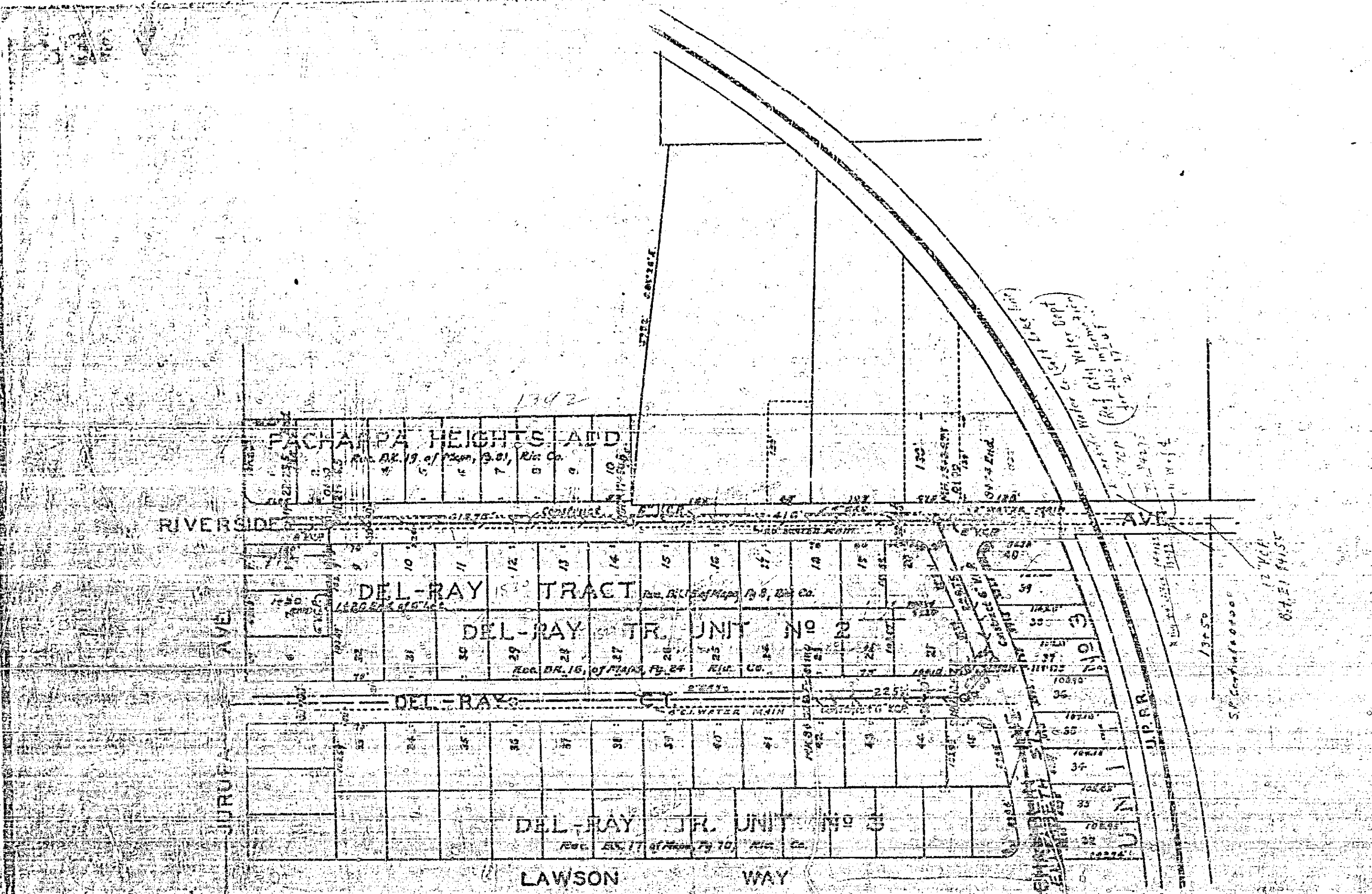
CITY (U.S.G.S.) DATUM PLANE

FB 403 PG. 72

APPROVED *E. J. Hoffmann*  
 REG. ENG. 1312 CITY ENGINEER.

APPROVED AND ADOPTED BY THE MAYOR  
 AND COUNCIL OF THE CITY OF RIVERSIDE  
 THIS DAY OF 1945.

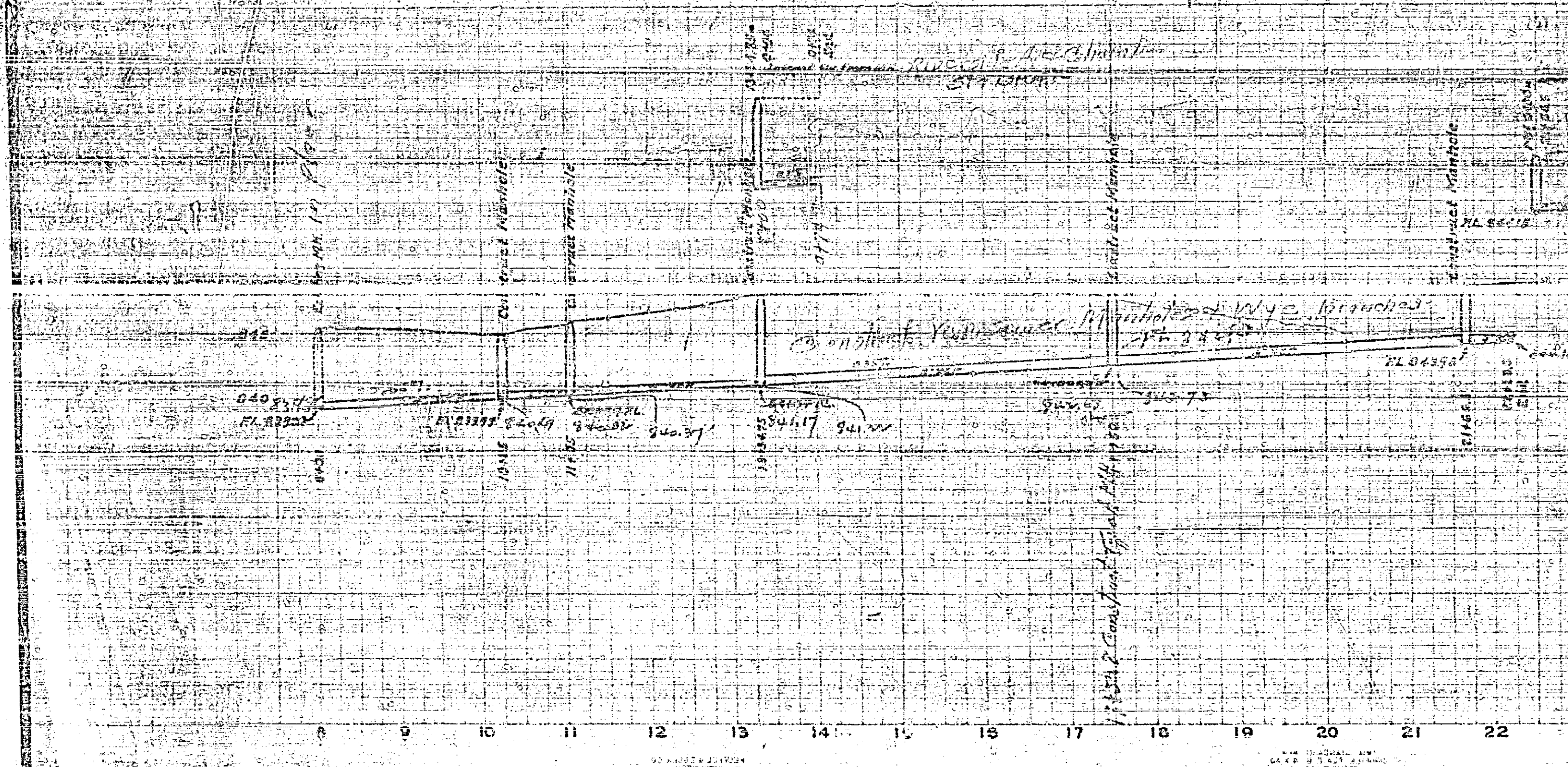
CITY CLERK, CITY OF RIVERSIDE.



SCALE  
 1" = 100' HOR.  
 1" = 6' VER.

SEWER INLET PLACE  
 Manholes

LEGEND  
 Yellow line - Proposed sewer line  
 Dashed line - Sewer to be constructed shown thus  
 Solid line - Sewer to be constructed shown thus  
 Circle with cross - Sewer manhole  
 Circle with dot - Sewer inlet place



375 A