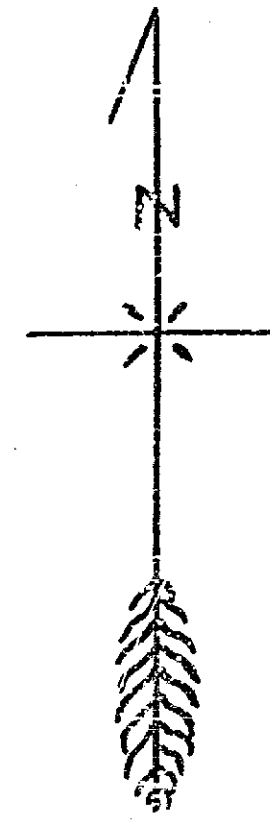


377-B
 MAP OF PROPOSED SEWER IN EAST 5th ST.
 BET. EUCALYPTUS AND FRANKLIN

District Benefited Shown Thus"
 Field Notes in Book 70 Page 62
 Fig. 1 " " 114 " 28
 Scale 1 inch = 100 Ft.

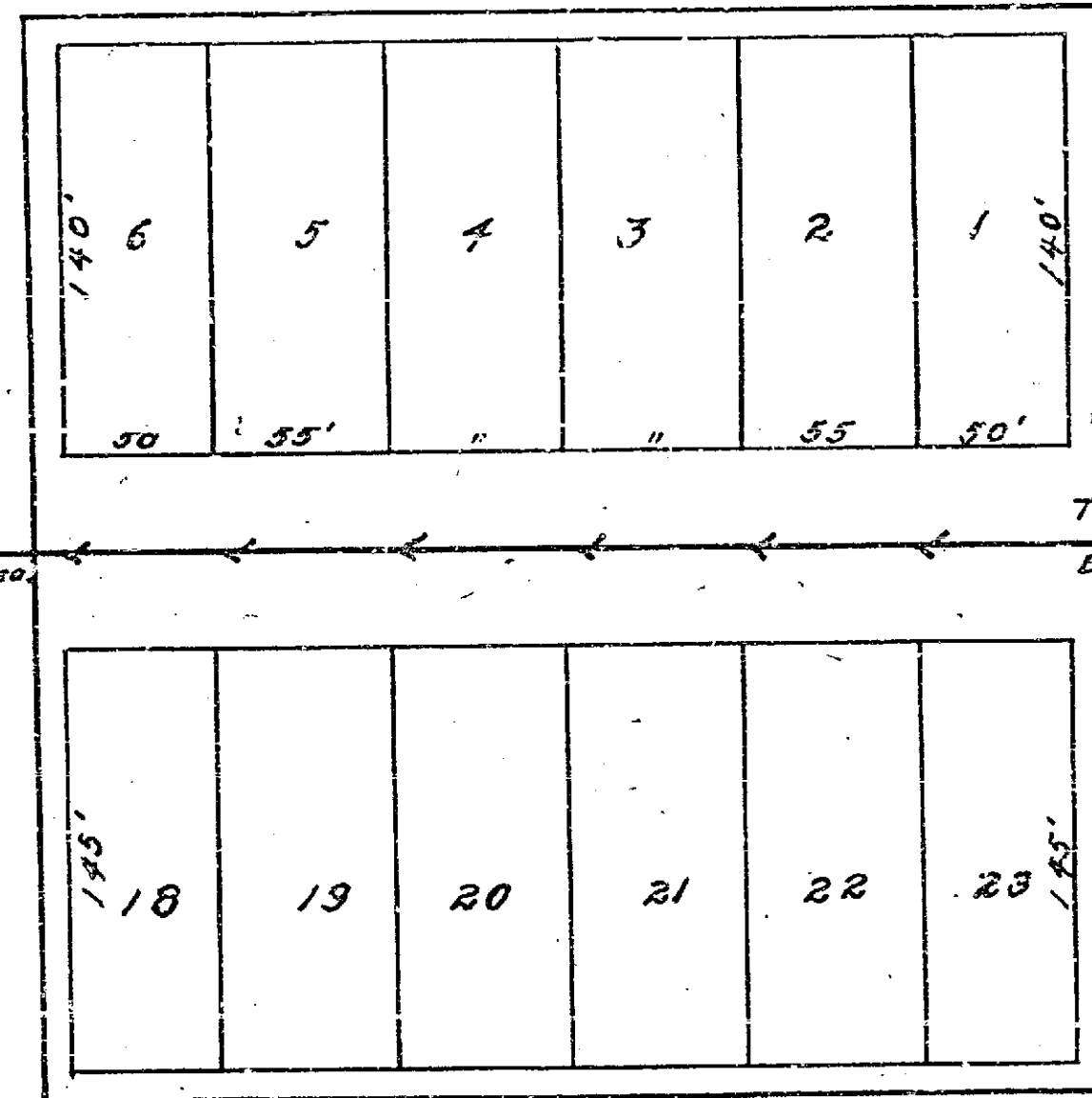
A. P. Campbell,
 City Engineer.



EUCALYPTUS AVE.

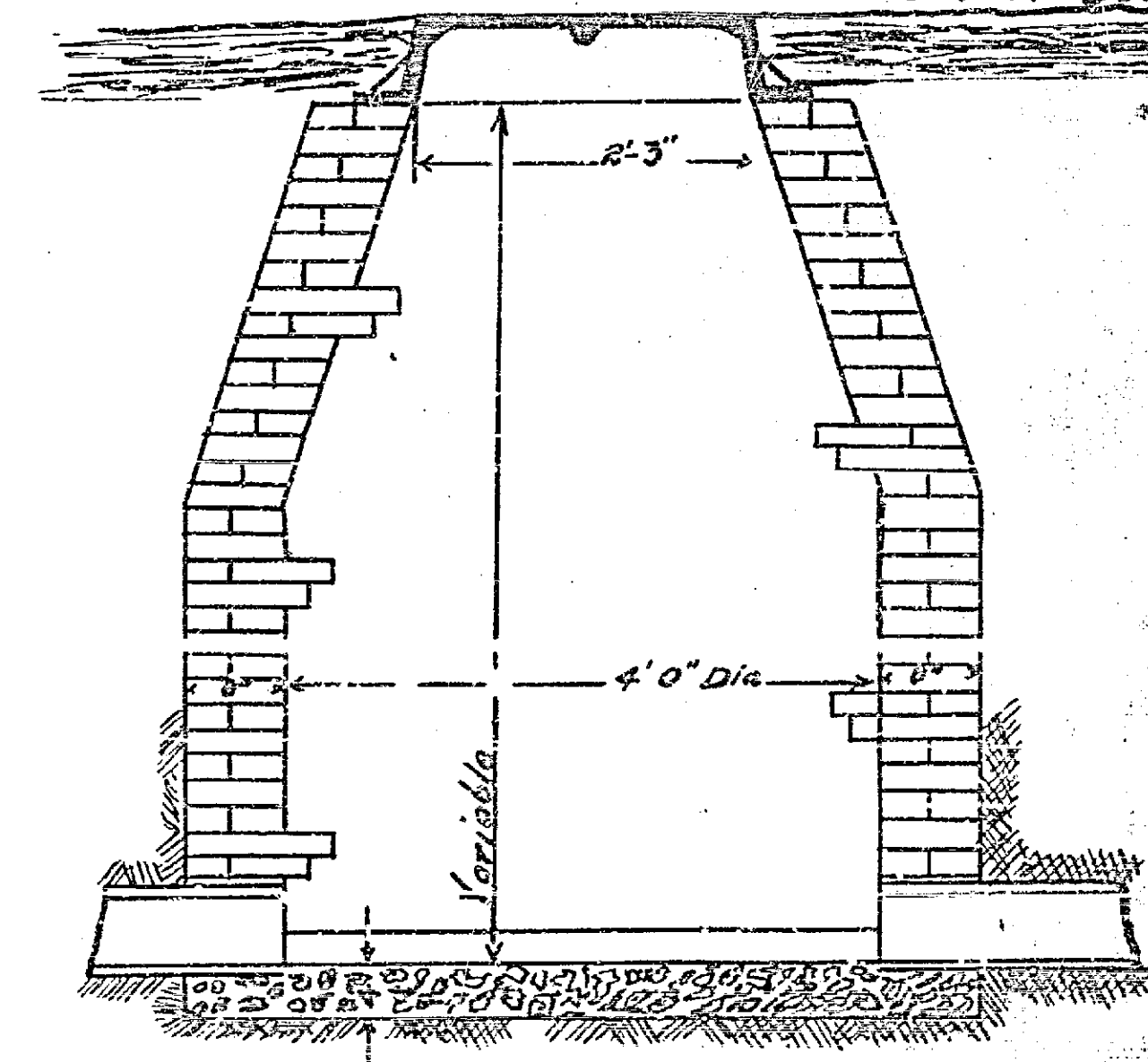
FRANKLIN AVE.

5TH ST. Type "A" constructed. Type "A" to be constructed.



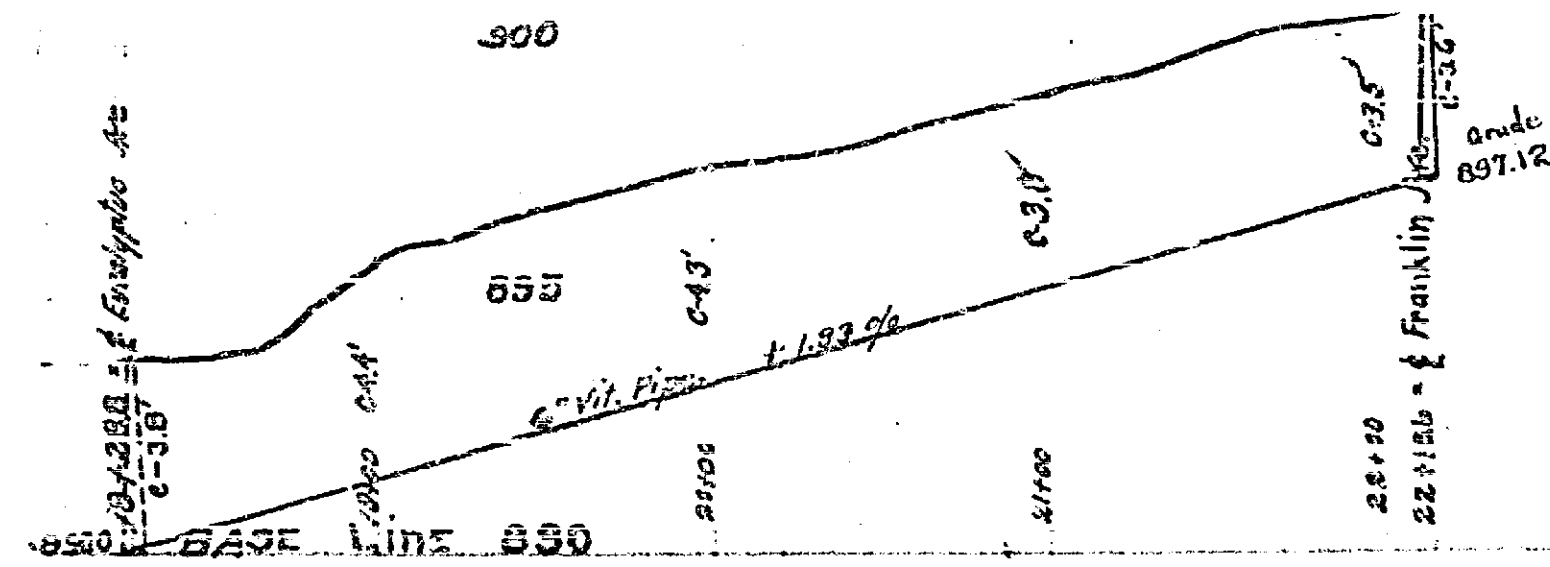
Sewer Book # 3, Pg 90

STANDARD
 Type "A" Manhole
 For construction see Specifications No 16,
 Street Surface.



List of Materials.
 360.5 ft of 6" Vitrified pipe
 12 - 6"x4"x3"
 1 Type "A" Manhole.

Scale of Profile
 1 inch Hor = 100 Ft.
 1 inch Ver = 6 Ft.



Adopted by the Mayor and
 Common Council of the City of
 Riverside, California, February 17, 1914.
 Attest *[Signature]*
 City Clerk.

377 B