

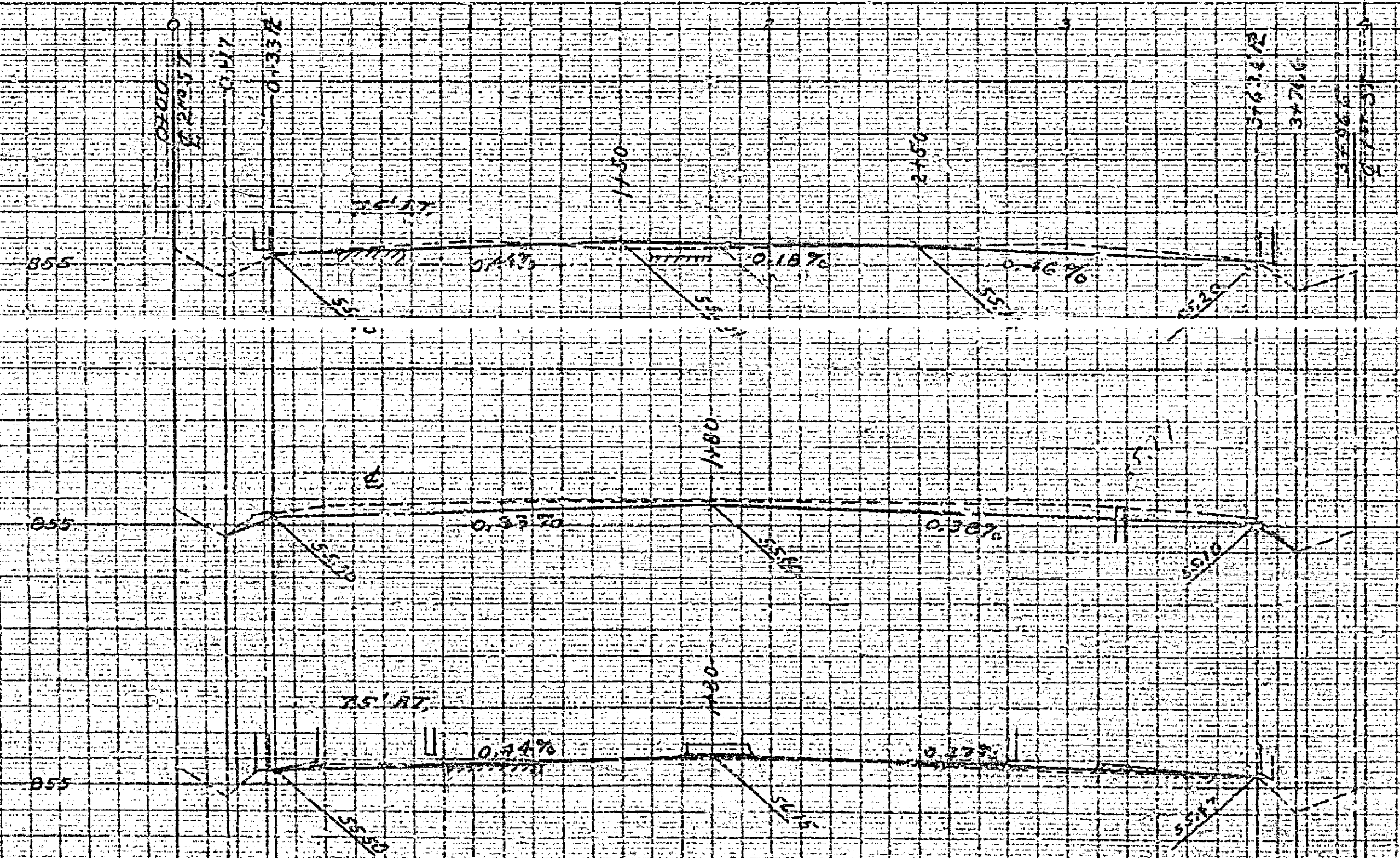
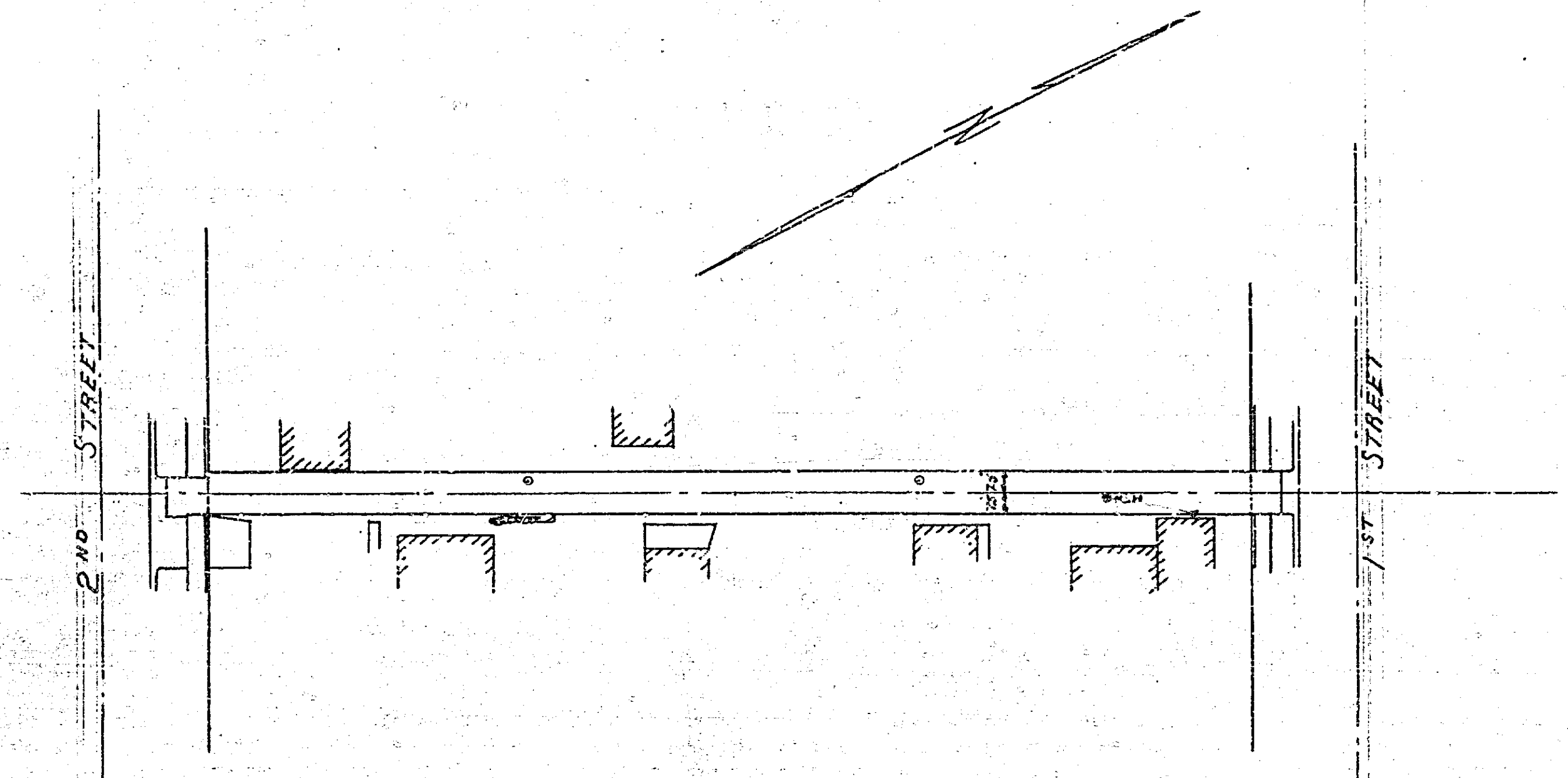
380-B

PLAN NO. 380-B
BLK. 1 - R6.5.

PAVING GRADES
FOR
ALLEY
BETWEEN
ORANGE ST & LEMON ST
FROM 1ST ST TO 2ND ST
CITY OF RIVERSIDE CALIFORNIA

SCALES
HORIZ 1"=40'
VERT 1"=4'

FB 520/60



25/5/52

380

MADE IN U.S.A.
CLEARING PAPER CO.
CLEANING, PROPE PLAN W/AL A

380B

PROPRIETOR
PLAN
CLEARING PAPER CO.
MADE IN U.S.A.