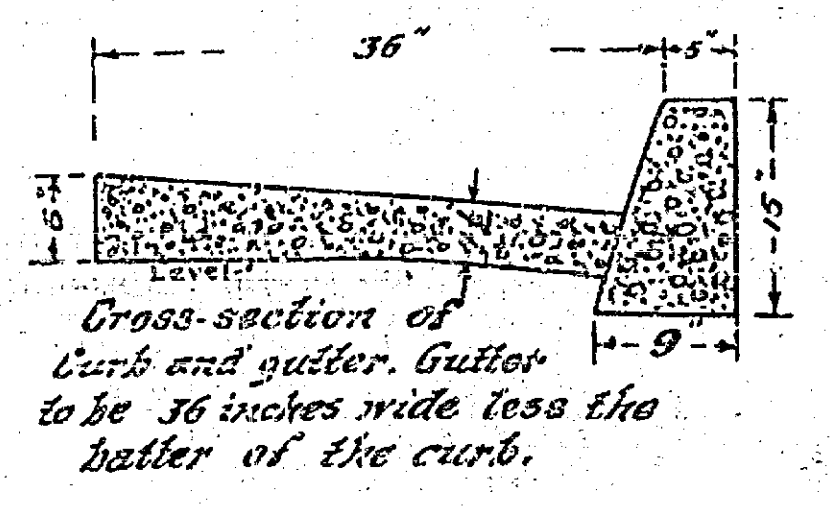
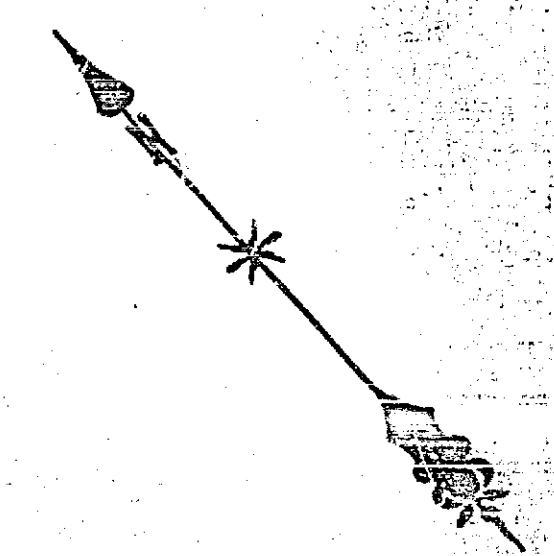
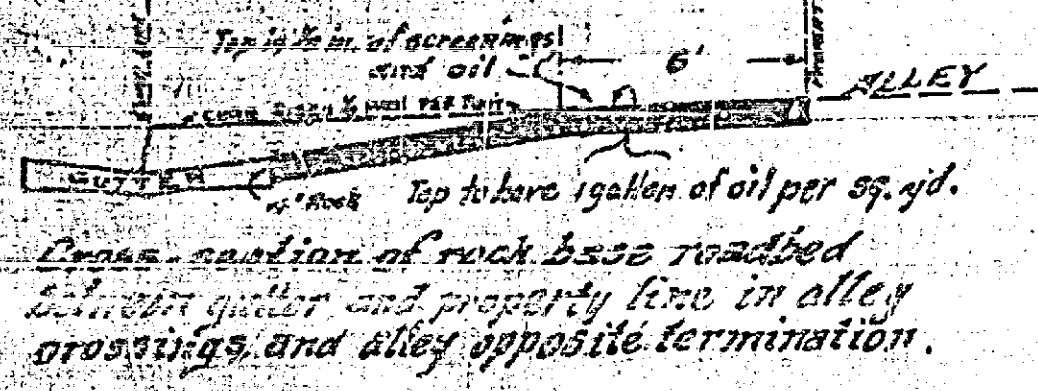


MAP of PROPOSED IMPROVEMENTS ON 12TH ST. FROM WALNUT TO PEPPER ST.

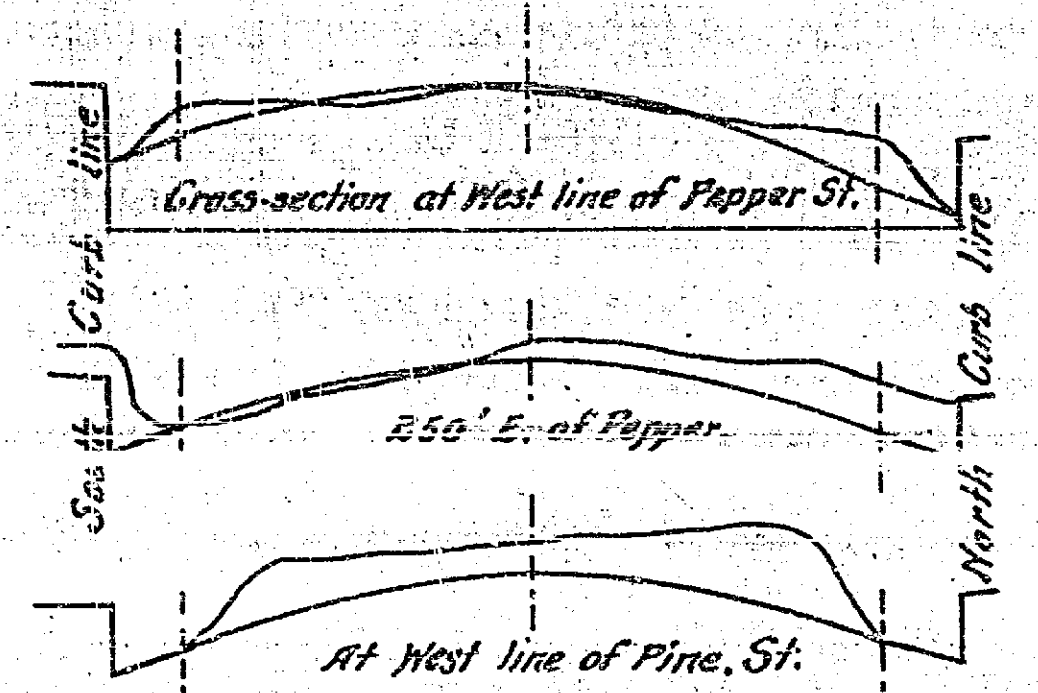
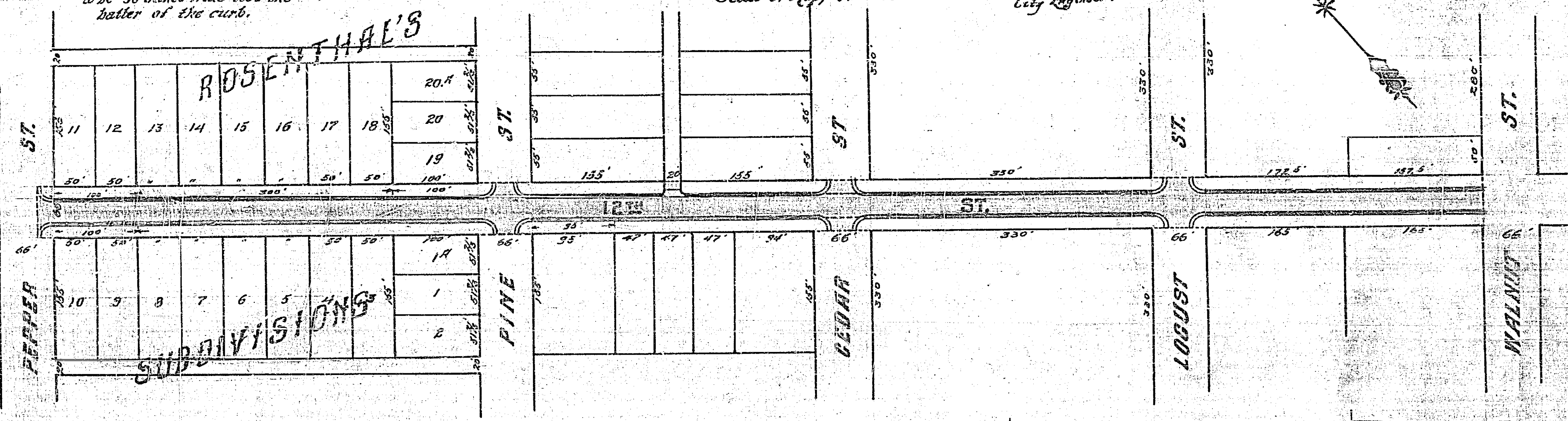
Scale of Map, 1 in. = 100 feet. R. P. Campbell,
City Engineer.



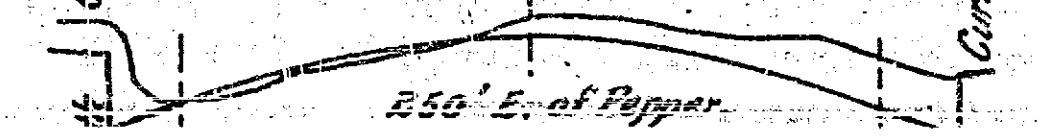
Cross-section of
Curb and gutter. Gutter
to be 36 inches wide less the
batter of the curb.



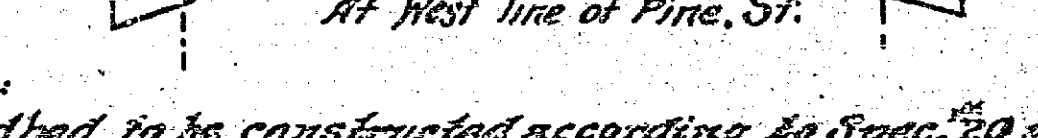
Cross-section of rock base roadbed
between gutter and property line in alley
crossings and alley opposite termination.



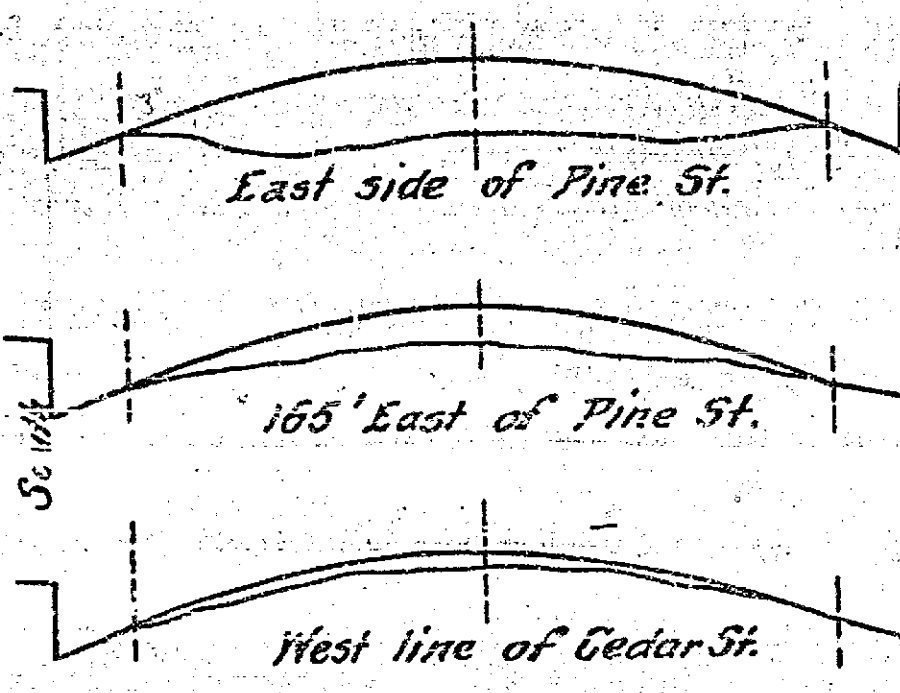
Cross-section at West line of Pepper St.



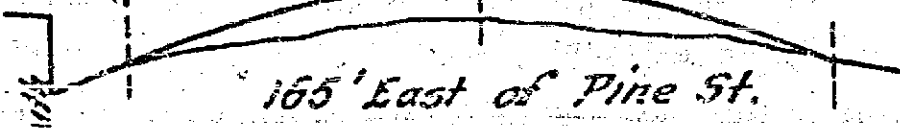
250' E. of Pepper



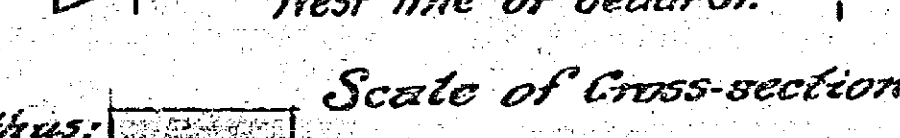
At West line of Pine St.



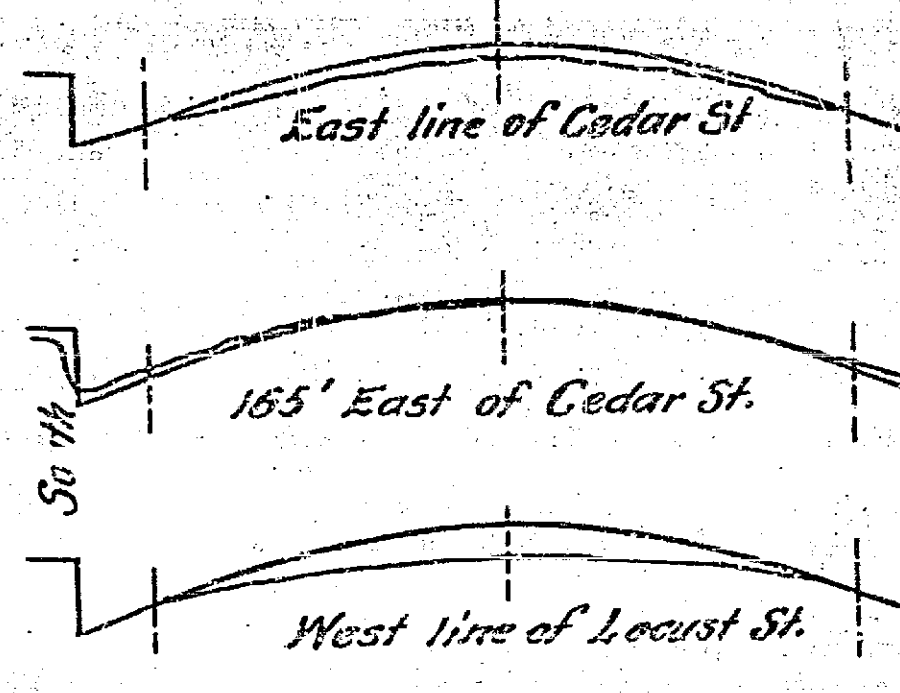
East side of Pine St.



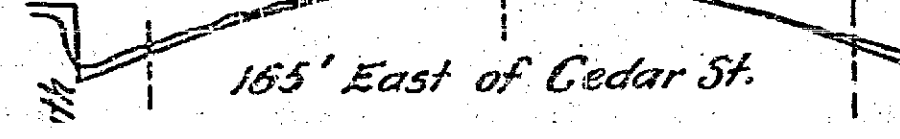
165' East of Pine St.



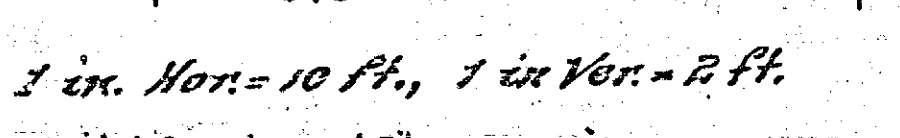
West line of Cedar St.



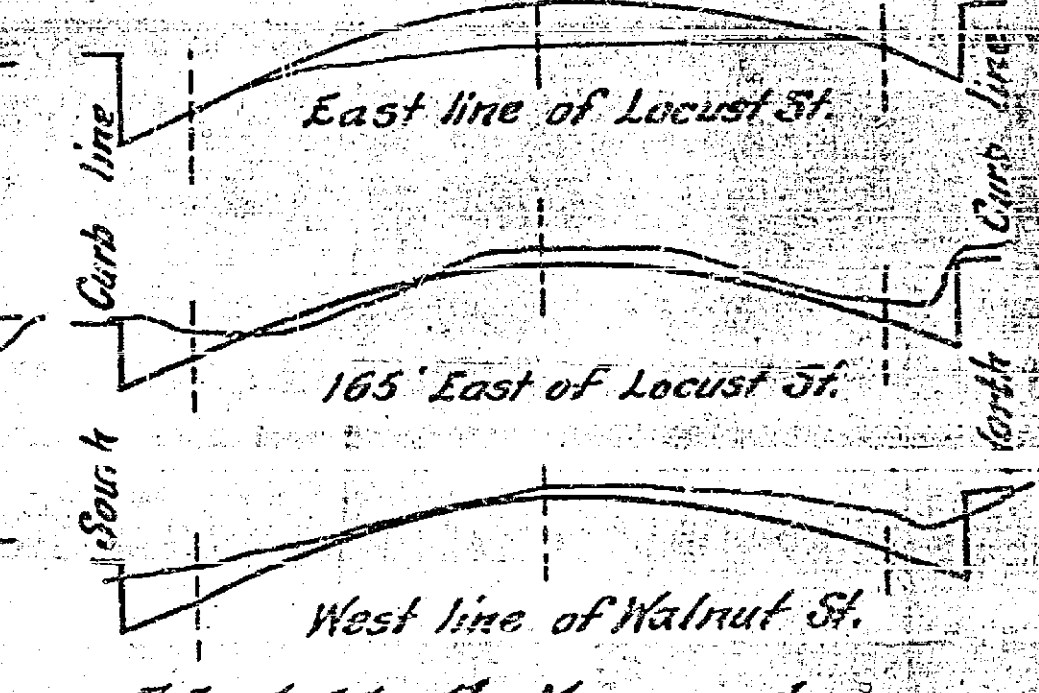
East line of Cedar St.



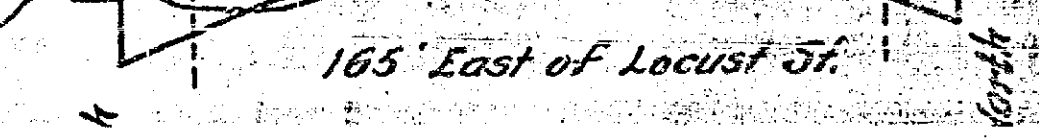
165' East of Cedar St.



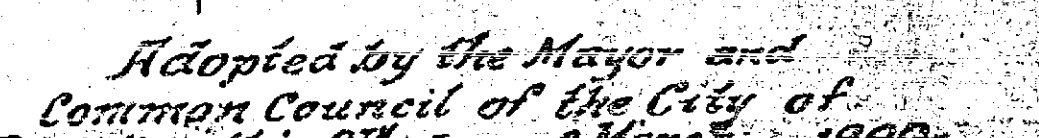
West line of Locust St.



East line of Locust St.

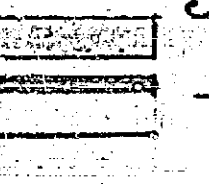


165' East of Locust St.

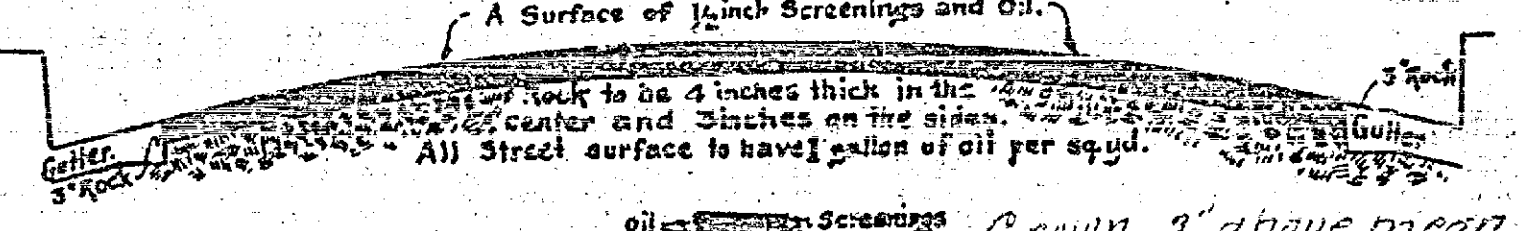


West line of Walnut St.

Note:-
Roadbed to be constructed according to Spec. 20 is shown thus:
Concrete gutter to be constructed is shown thus:
Cement curb to be constructed is shown thus:



Scale of Cross-sections, 1 in. Hor. = 10 ft., 1 in. Ver. = 2 ft.



CROWN 3' ABOVE MEAN
OF CURBS
CROSS-SECTION OF ROADWAY OF 12TH ST.

Adopted by the Mayor and
Common Council of the City of
Pepperdine, this 3rd day of March, 1909.
Attest: J. C. Jacobs
City Clerk.