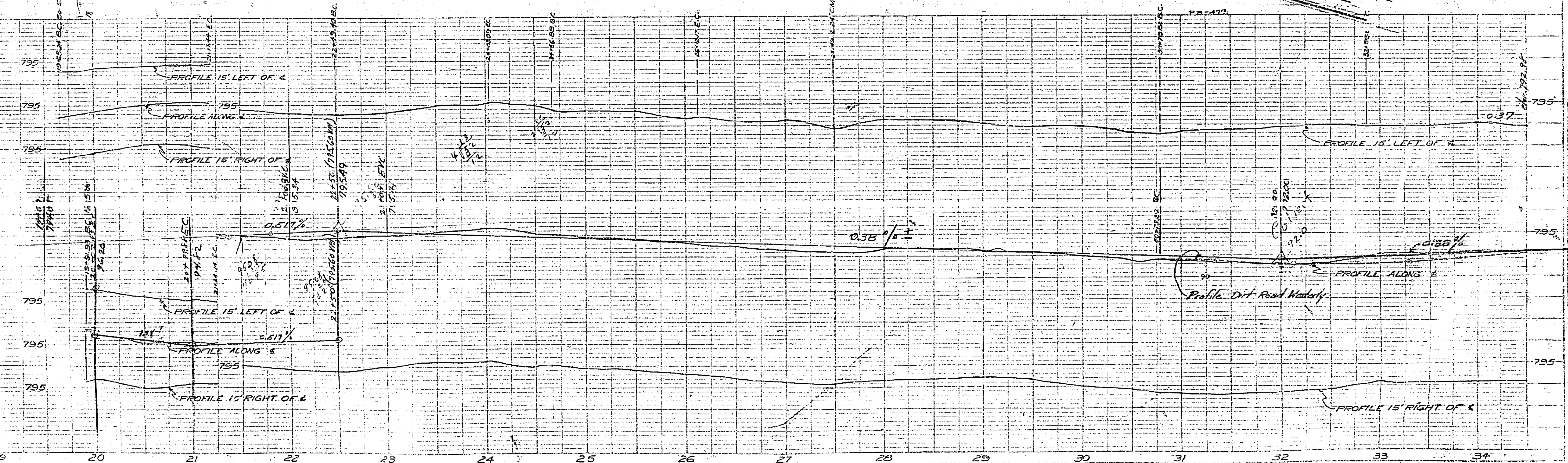
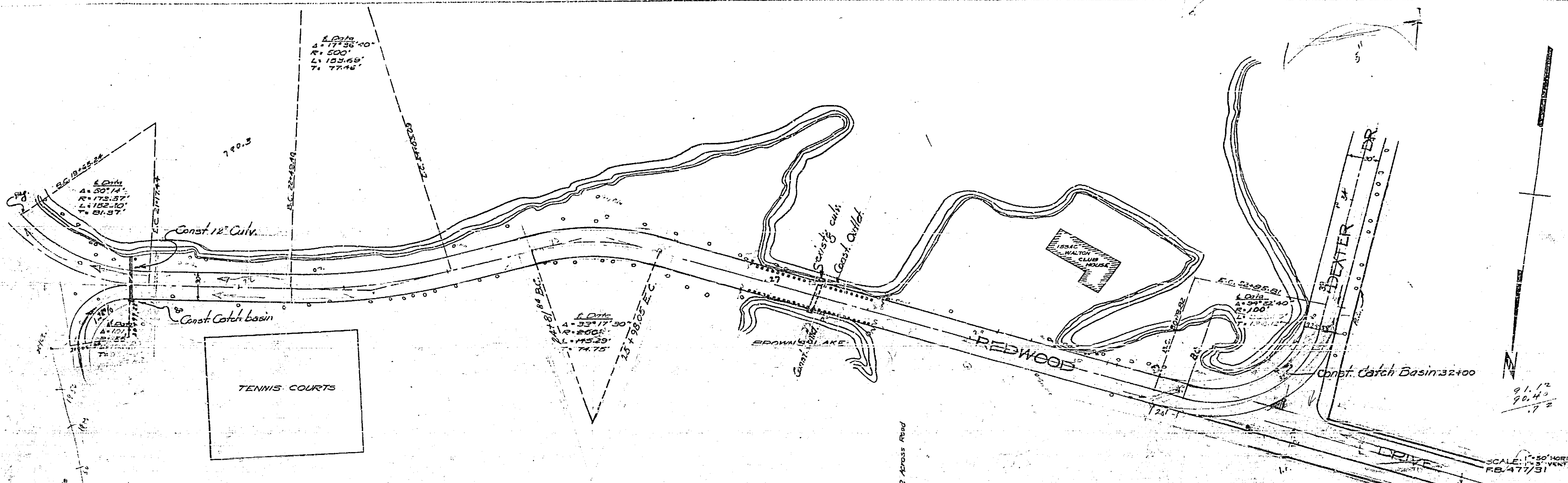


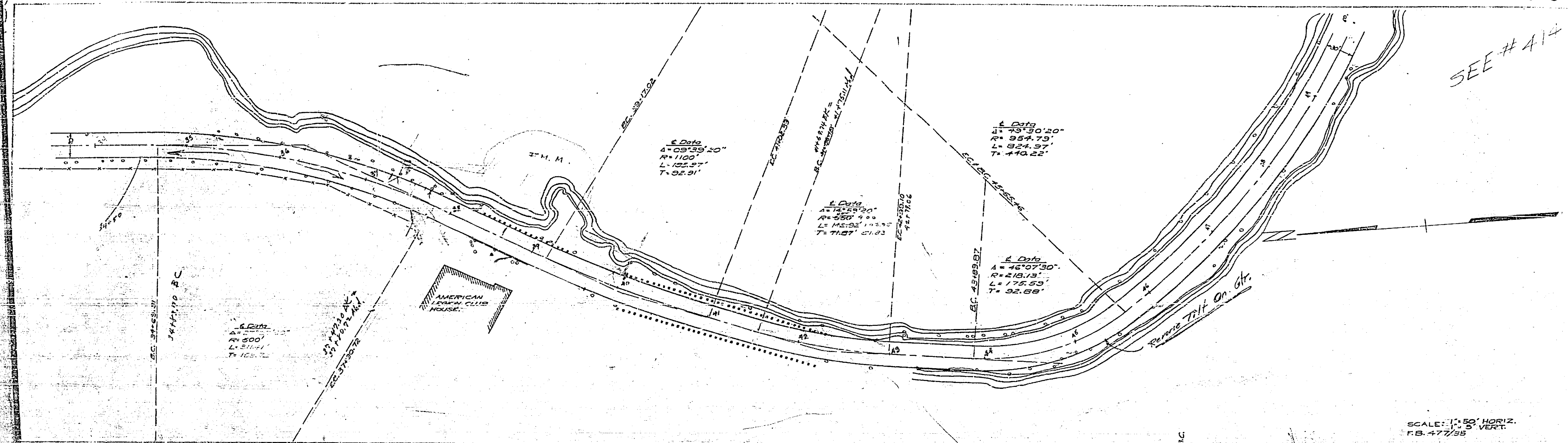
SEE # 114



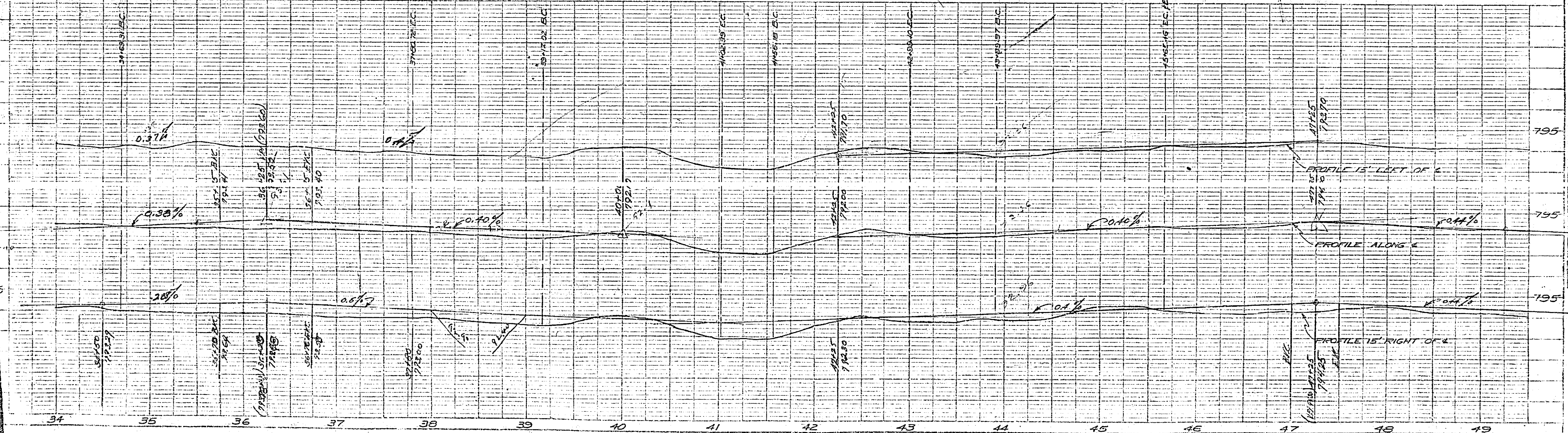
See # 1147 - E

387

SEE # 414

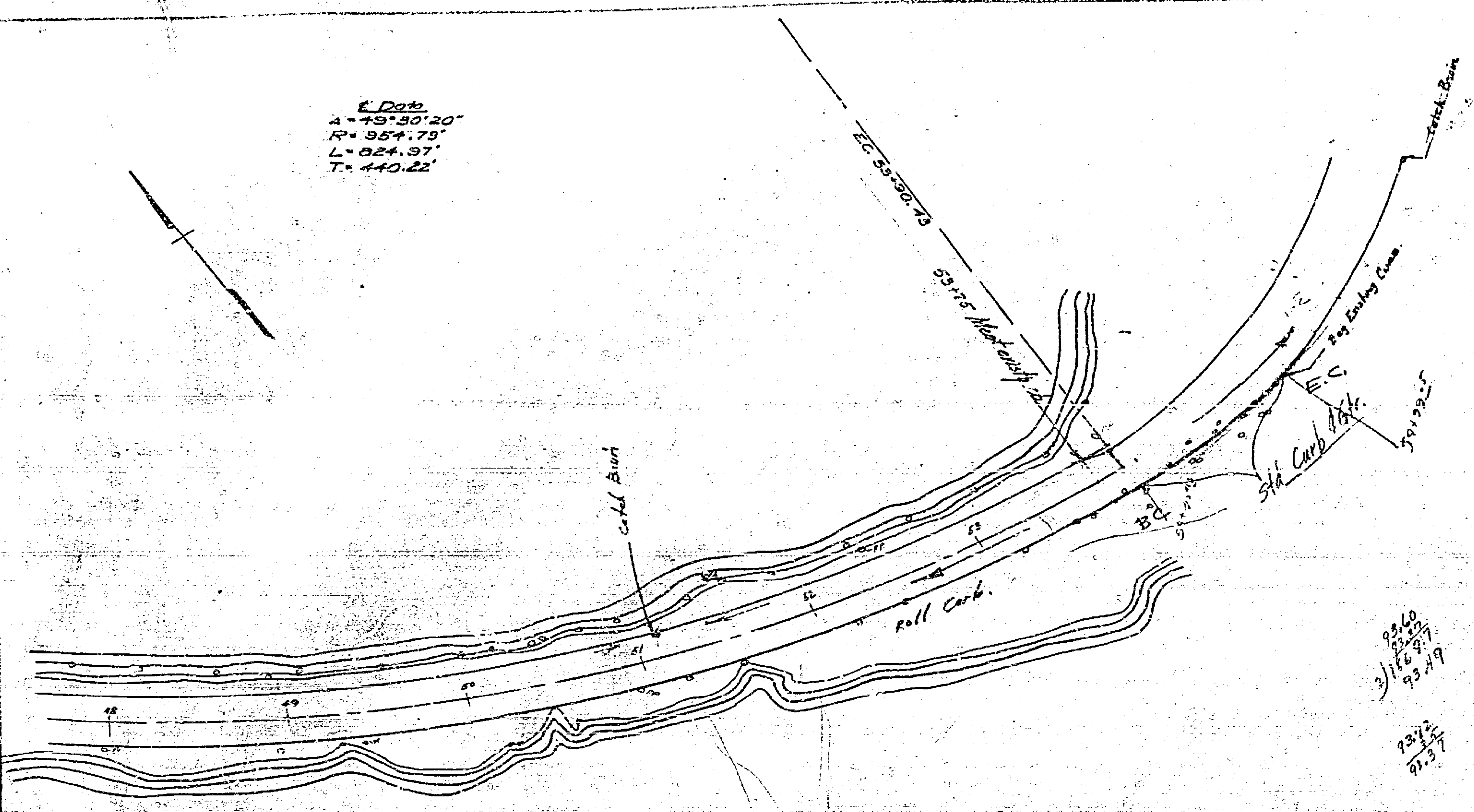


SCALE: 1" = 50' HORIZ.  
1" = 5' VERT.  
F.B. 477/35



See # 1149 - E 387

Curve Data  
A = 49° 50' 20"  
R = 954.75'  
L = 824.97'  
T = 440.22'



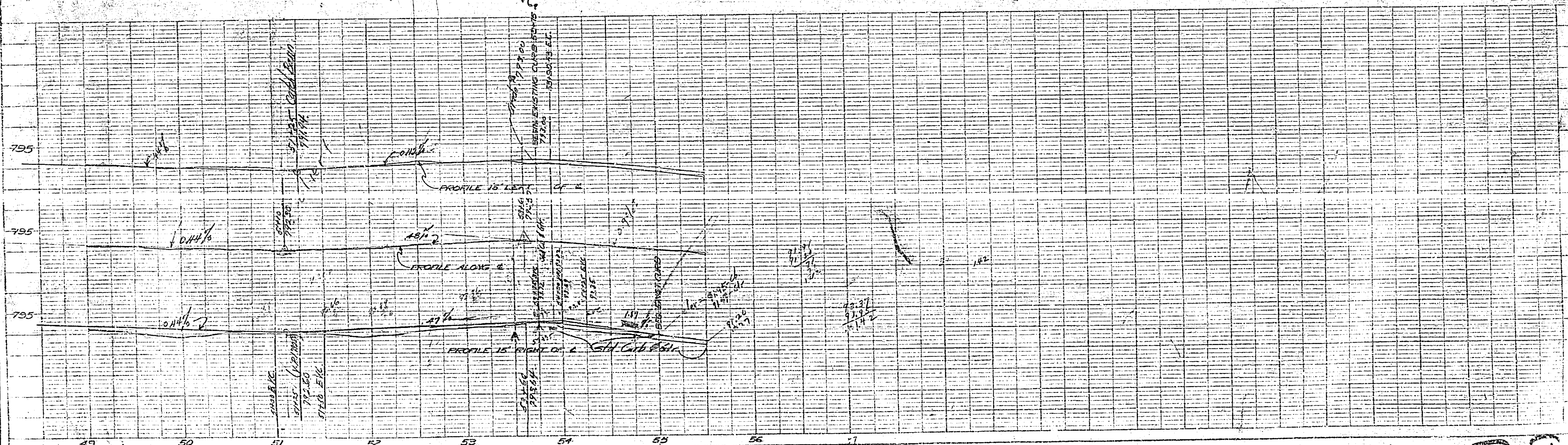
PLANS AND PROFILES  
NO 387  
FOR THE IMPROVEMENT OF  
FAIRMOUNT DEXTER DRIVE  
BETWEEN REDWOOD DR. & FAIRMOUNT PARK RD.

SEE # 414

APPROVED CITY ENGINEER

SCALE 1" = 50' HORIZ.  
1" = 5' VERT.  
FG. 477/31

93.60  
2) 116.97  
93.49  
93.72  
91.97  
91.42



93.60  
93.49  
93.72  
91.97  
91.42

Sec # 1147- 387