

DIAGRAM

EXHIBIT 3 MISSION STREET IMPROVEMENT DISTRICT

IN THE CITY OF RIVERSIDE ON WHICH WORK HAS BEEN DONE UNDER MY OFFICIAL CONTRACT AS SUPERINTENDENT OF STREETS OF SAID CITY WITH CO. BRAND

DATED JUNE 20, 1950

FOR THE CONSTRUCTION OF CEMENT CONCRETE COMBINATION CURB AND GUTTER, STANDARD CATCH BASINS AND 12 IN. CORRUGATED METAL PIPE AS IS MORE PARTICULARLY DESCRIBED IN SAID CONTRACT TO WHICH REFERENCE IS HEREBY MADE FOR FURTHER PARTICULARS; SAID DIAGRAM ALSO SHOWS THE RELATIVE LOCATION OF EACH LOT, PORTION OF LOT, PIECE OR PARCEL OF LAND ASSESSED FOR THE WORK DONE NUMBERED IN ~~CONCRETE~~ TO CORRESPOND TO THE RED INK NUMBERS IN THE ASSESSMENT

HEREIN FIGURES NEXT TO PROPERTY LINES SHOW LENGTH OF SAID LINES IN FEET. THE MARK (x) MEANS FEET. PROPERTY LINES THAT DIFFER FROM THE RECORDED SUBDIVISIONS ARE SHOWN BY BROKEN LINES. THE DISTRICT BENEFITED IS BOUND BY A HEAVY DASHED LINE.

PROPERTY COVERED BY THIS ASSESSMENT IS SHOWN ON THE FOLLOWING RECORDED MAPS:

RESUBDIVISION OF VAN BUREN PARK

REC. IN BOOK 6, PAGE 26, RECORDS OF RIVERSIDE COUNTY, CALIFORNIA

I HEREBY CERTIFY THAT THIS ASSESSMENT DIAGRAM WAS APPROVED BY THE CITY COUNCIL OF THE CITY OF RIVERSIDE AT A MEETING THEREOF HELD ON THE 8th DAY OF

August, 1950

W. H. ...
CITY CLERK OF THE CITY OF RIVERSIDE.

HEREIN THE LEGEND OF THE DIFFERENT KINDS OF WORK PERFORMED IS SHOWN AS FOLLOWS:

COMBINATION CURB AND CUTTER



STANDARD CATCH BASINS



SUPERINTENDENT OF STREETS OF THE CITY OF RIVERSIDE THE FOLLOWING IS A STATEMENT OF AMOUNTS OF DIFFERENT KINDS OF WORK DONE BY CO. BRAND

UNDER

CONTRACT DATED JUNE 20, 1950 PURSUANT TO RESOLUTION OF INTENTION NO 4806 ADOPTED BY THE CITY COUNCIL OF THE CITY OF RIVERSIDE ON THE 28TH DAY OF MARCH, 1950.

LIST OF QUANTITIES

1116.95 LIN. FT.	COMBINATION CURB AND GUTTER
2	STANDARD CATCH BASINS
0.	12 IN. CORRUGATED METAL PIPE

AT SAID CITY OF RIVERSIDE THIS DAY OF

I HEREBY CERTIFY THAT THE ABOVE WORK WAS DONE IN ACCORDANCE WITH LINES AND GRADES FURNISHED BY ME AND THAT THE DIAGRAM OF THE ASSESSMENT DISTRICT FOR THE SAME IS CORRECT.

SUPERINTENDENT OF STREETS OF THE CITY OF RIVERSIDE.

CITY ENGINEER OF THE CITY OF RIVERSIDE.

RECORDED AT O'CLOCK 19 M.

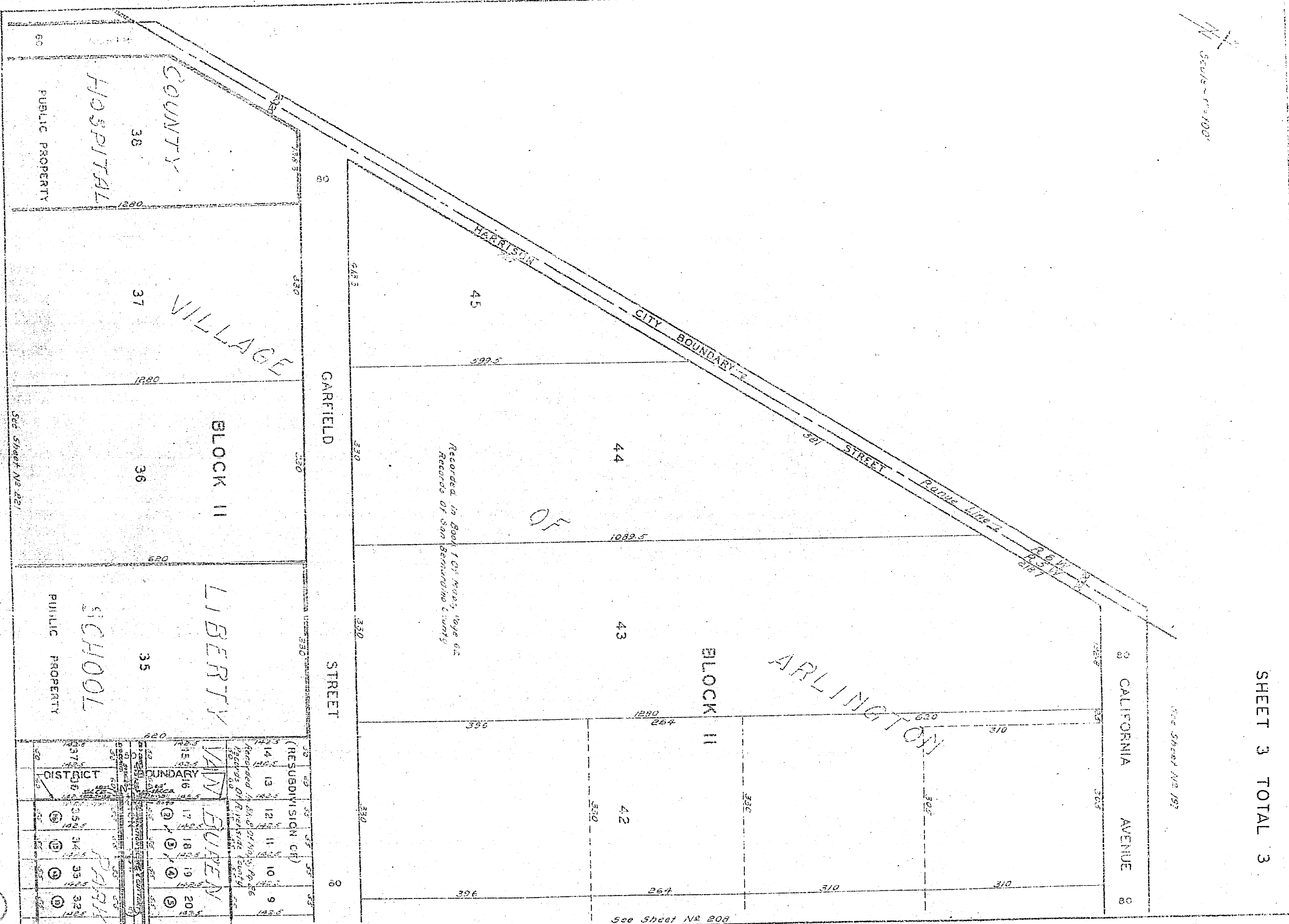
THIS DAY OF

SUPERINTENDENT OF STREETS OF THE CITY OF RIVERSIDE.

389

389

N
Scale 1" = 100'



SHEET 3 TOTAL 3

See Sheet No 197

See Sheet No 208

See Sheet No 221

DISTRICT BOUNDARY		CITY BOUNDARY		RESUBDIVISION CH	
14	13	12	11	10	9
15	14	13	12	11	10
16	15	14	13	12	11
17	16	15	14	13	12
18	17	16	15	14	13
19	18	17	16	15	14
20	19	18	17	16	15
21	20	19	18	17	16
22	21	20	19	18	17
23	22	21	20	19	18
24	23	22	21	20	19
25	24	23	22	21	20
26	25	24	23	22	21
27	26	25	24	23	22
28	27	26	25	24	23
29	28	27	26	25	24
30	29	28	27	26	25
31	30	29	28	27	26
32	31	30	29	28	27
33	32	31	30	29	28
34	33	32	31	30	29
35	34	33	32	31	30
36	35	34	33	32	31
37	36	35	34	33	32
38	37	36	35	34	33

209