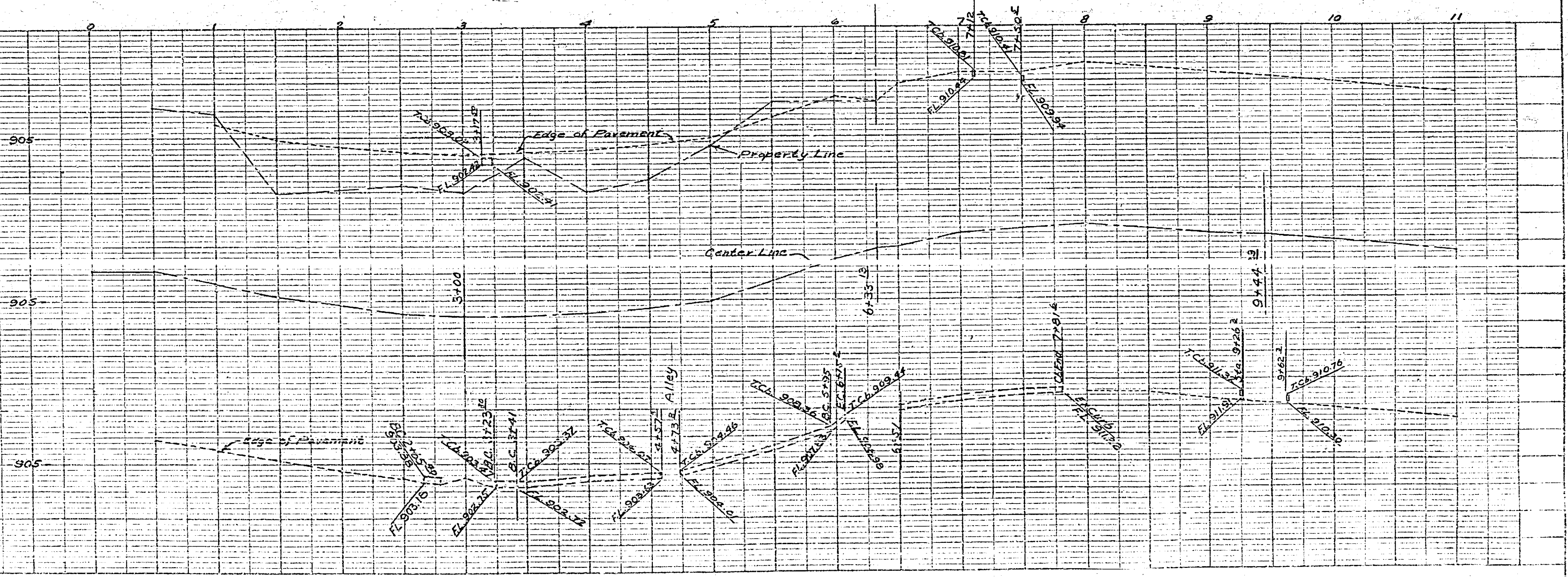
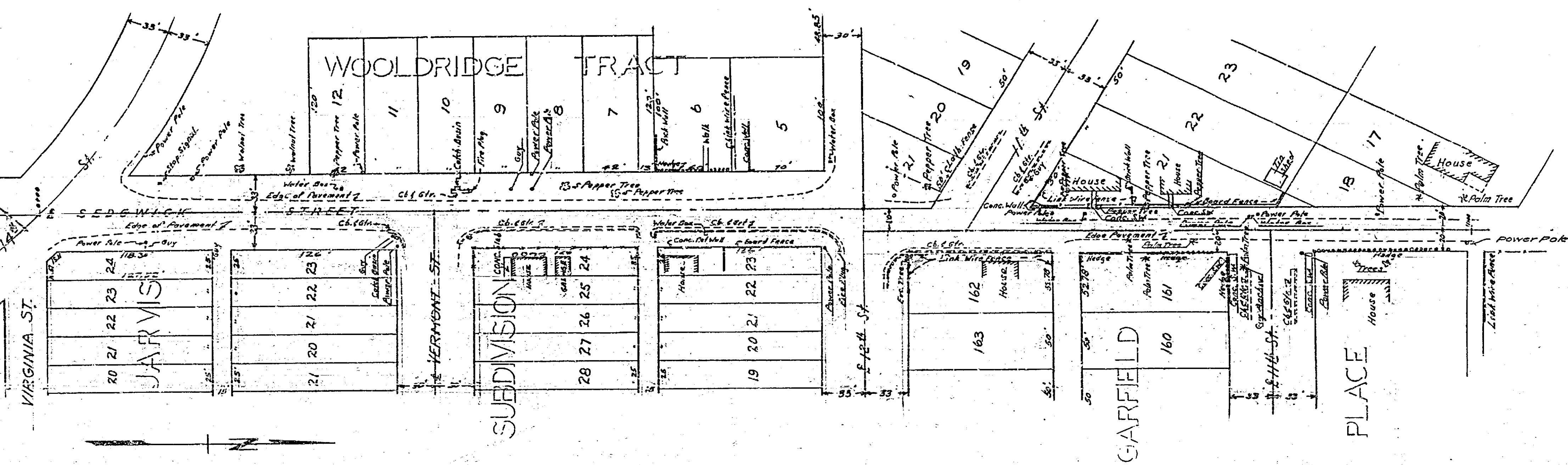


PLAN AND PROFILE
 NO. 390
 FOR CONSTRUCTION OF CONCRETE CURBS
 AND GUTTERS ON
 SEDGWICK STREET
 BETWEEN FOURTEENTH AND EIGHTH STREETS
 DATE - JAN. 1952

SCALES - HORIZONTAL 1 IN. = 50 FT.
 VERTICAL 1 IN. = 5 FT.

APPROVED M.H. IRVINE REG. C.E. NO. 3011

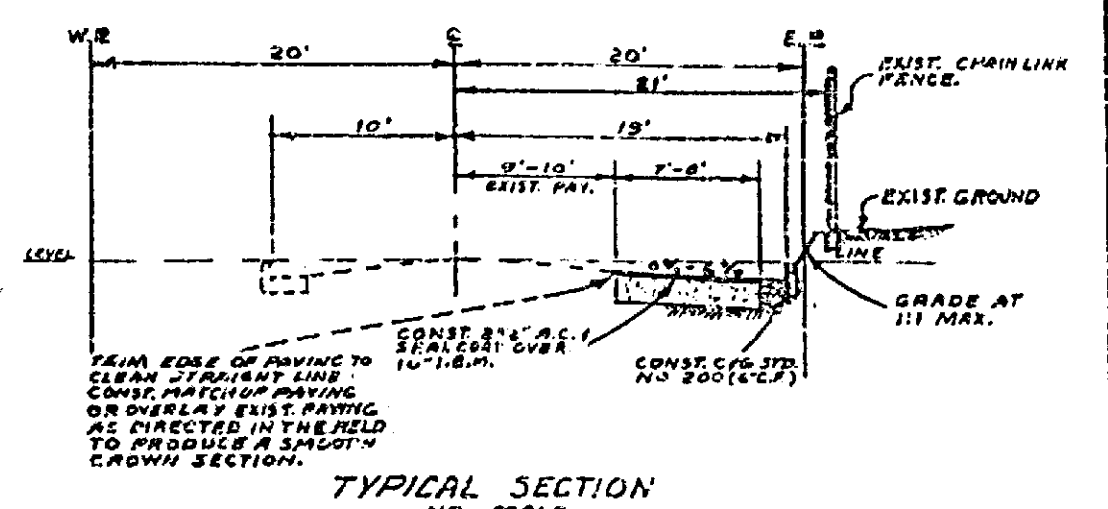
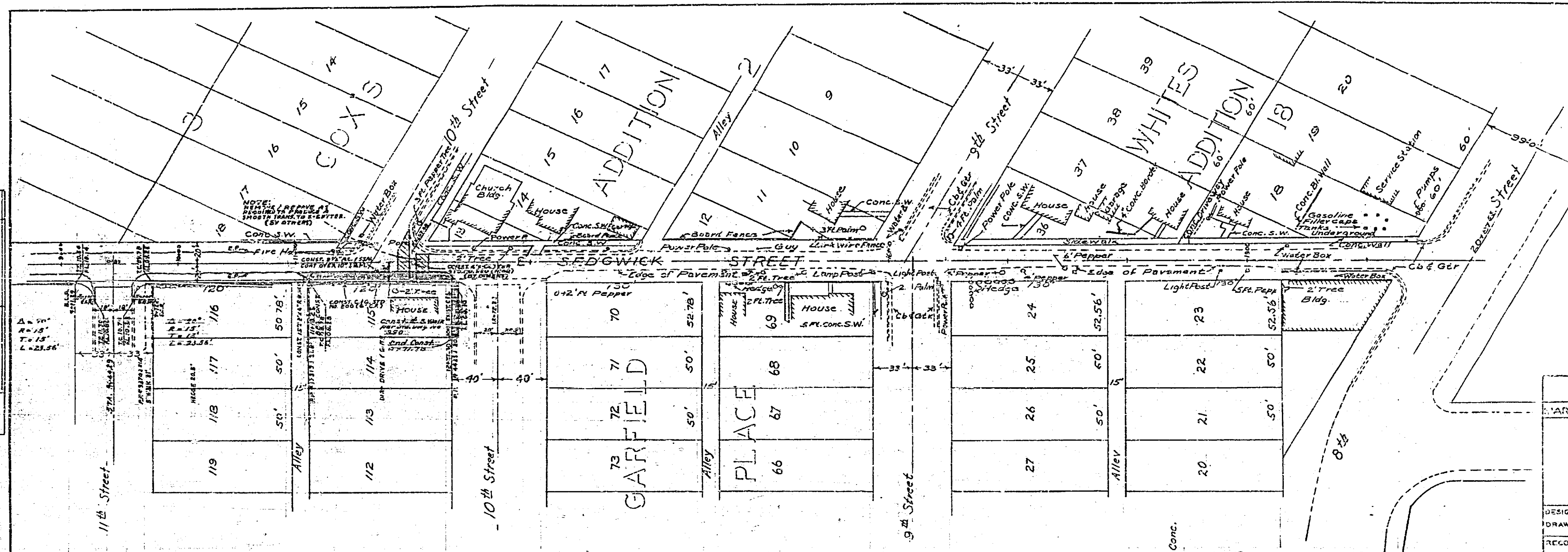
6 CURVE DATA
 Δ = 40° - 16'
 R = 500'



DATE	1/15/52
BY	M.H. IRVINE
CHECKED	
APPROVED	
SCALE	1" = 50'
PROJECT	NO. 390
DESCRIPTION	CONCRETE CURBS AND GUTTERS
LOCATION	SEDGWICK ST. B.T.W. 14TH & 8TH STS.
CITY	MEMPHIS, TENN.
OWNER	
ENGINEER	M.H. IRVINE
REG. NO.	3011

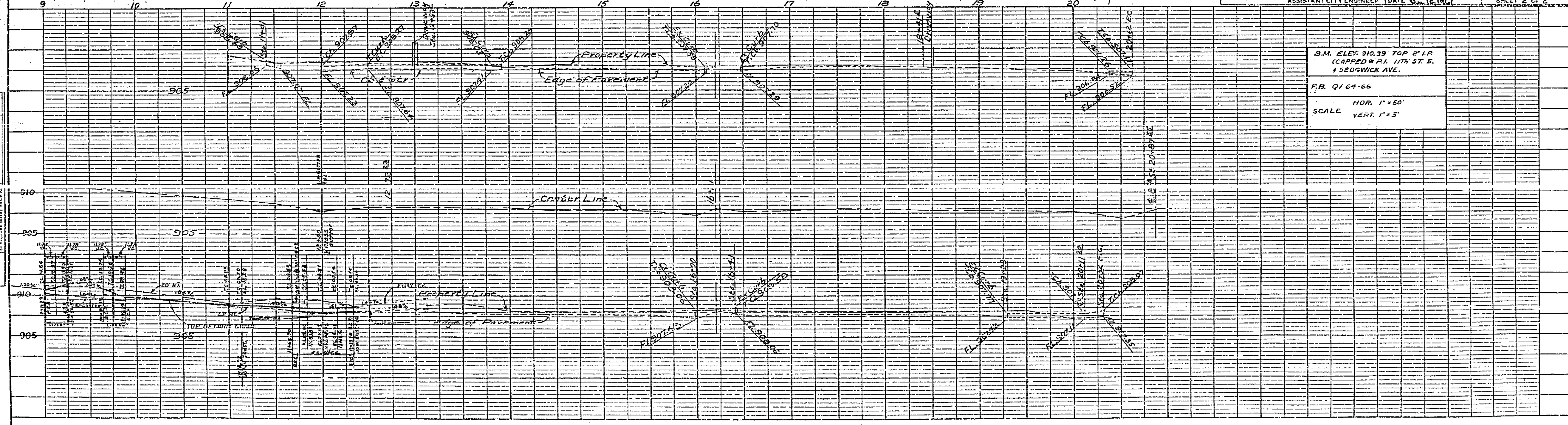
DATE	1/15/52
BY	M.H. IRVINE
CHECKED	
APPROVED	
SCALE	1" = 5 FT.
PROJECT	NO. 390
DESCRIPTION	PROFILE
LOCATION	SEDGWICK ST. B.T.W. 14TH & 8TH STS.
CITY	MEMPHIS, TENN.
OWNER	
ENGINEER	M.H. IRVINE
REG. NO.	3011

390



NOTE: ALL CONSTRUCTION SHALL BE IN ACCORDANCE WITH STANDARDS AND SPECIFICATIONS NO. 941 OF THE CITY OF RIVERSIDE DEPT. OF PUBLIC WORKS.

REVISIONS		CITY OF RIVERSIDE CALIFORNIA DEPARTMENT OF PUBLIC WORKS
MARK	DATE	
		SEDGWICK STREET TENTH STREET TO ELEVENTH STREET EAST SIDE ONLY
DESIGNED BY B.L.	CHECKED BY <i>[Signature]</i>	APPROVED BY <i>[Signature]</i>
DRAWN BY B.L.		DIRECTOR OF PUBLIC WORKS
RECOMMENDED BY <i>[Signature]</i>	ASSISTANT CITY ENGINEER	DATE 5-16-66
		390
		SHEET 2 OF 2



B.M. ELEV. 910.39 TOP 2" I.P.
(CAPPED @ P.I. 1174 ST. E.
1 SEDGWICK AVE.)

F.B. 9164-66

HOR. 1" = 50'

SCALE VERT. 1" = 5'

PLATE 1 - PLAN - PROFILE O.P. & R.L.
CLEARING PAPER CONTAINING 2 P. SHEET
No. 12054-1