

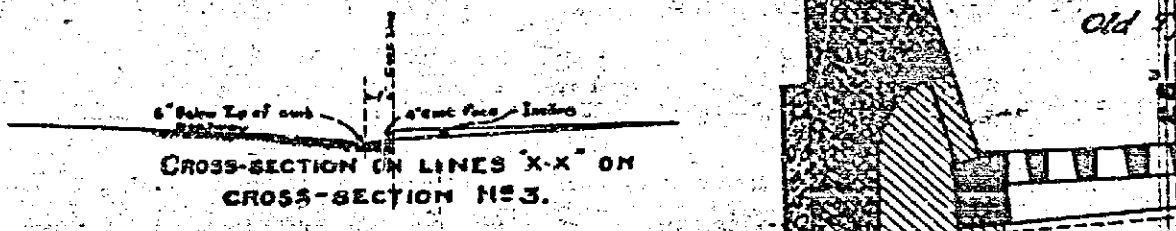
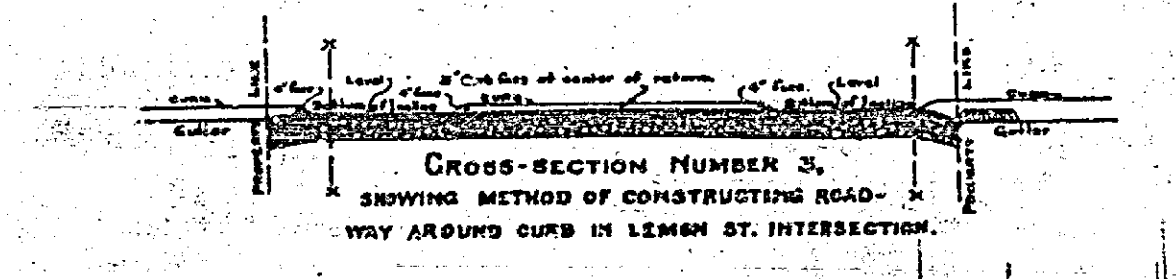
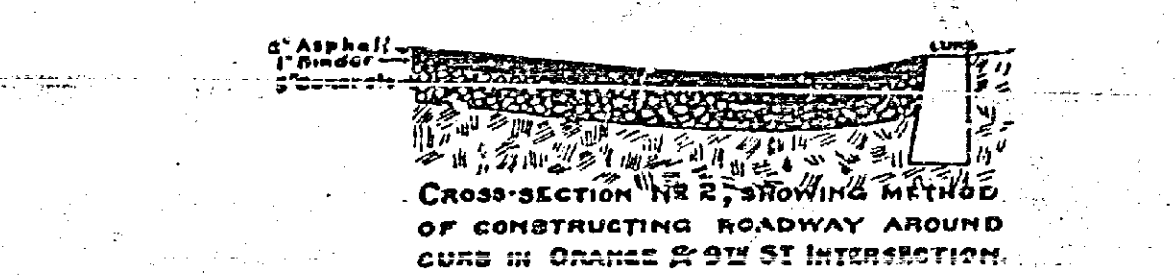
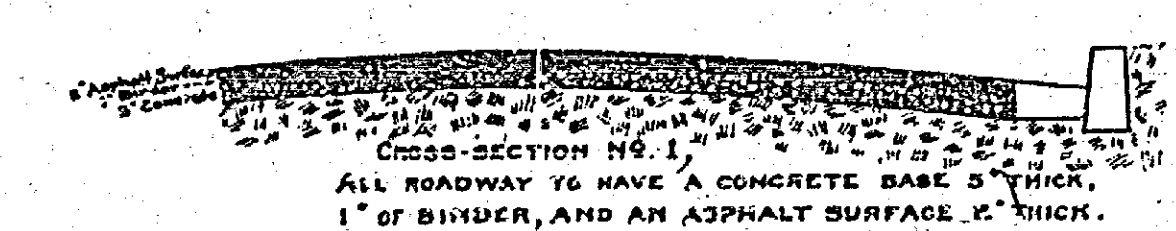
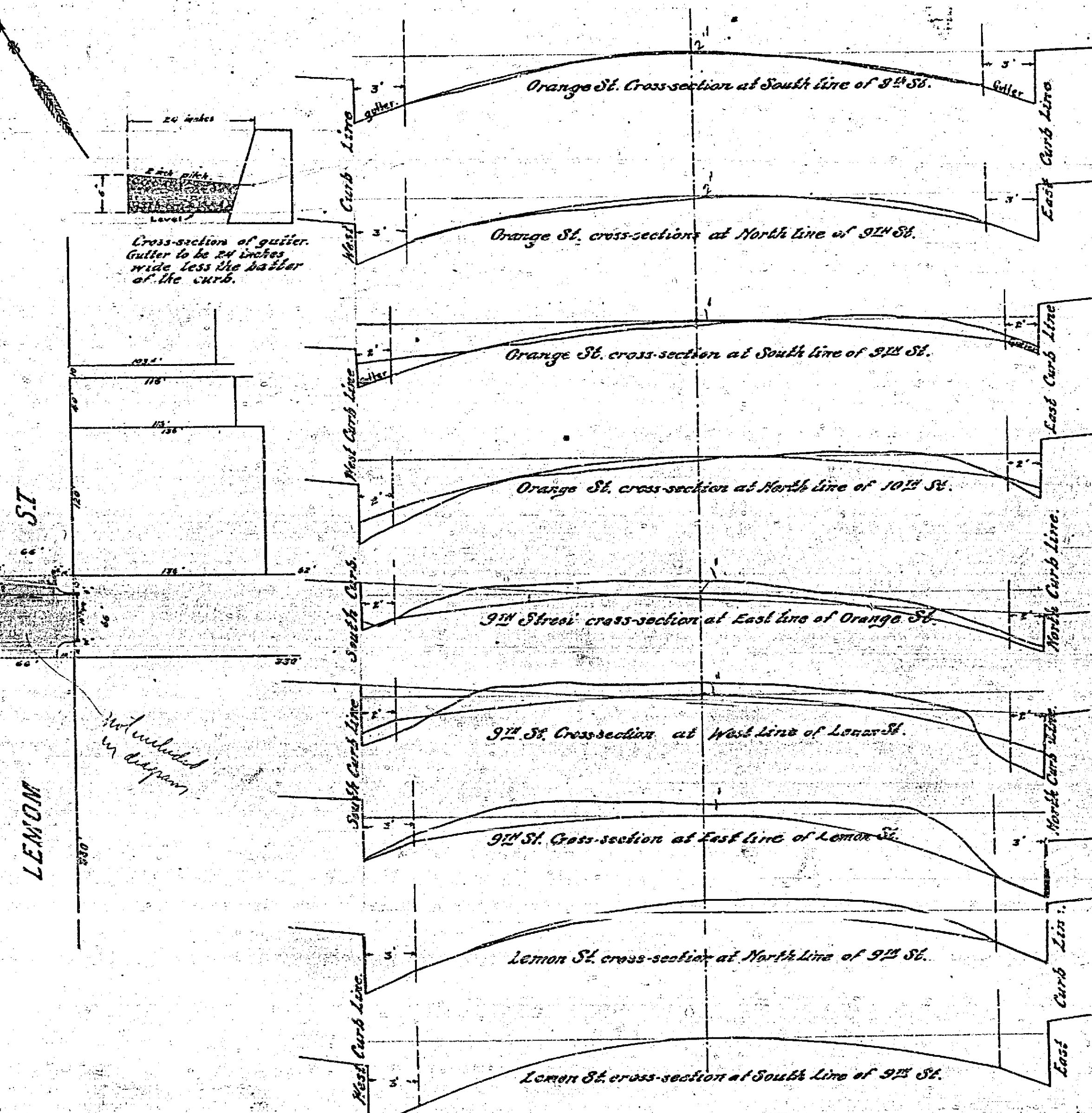
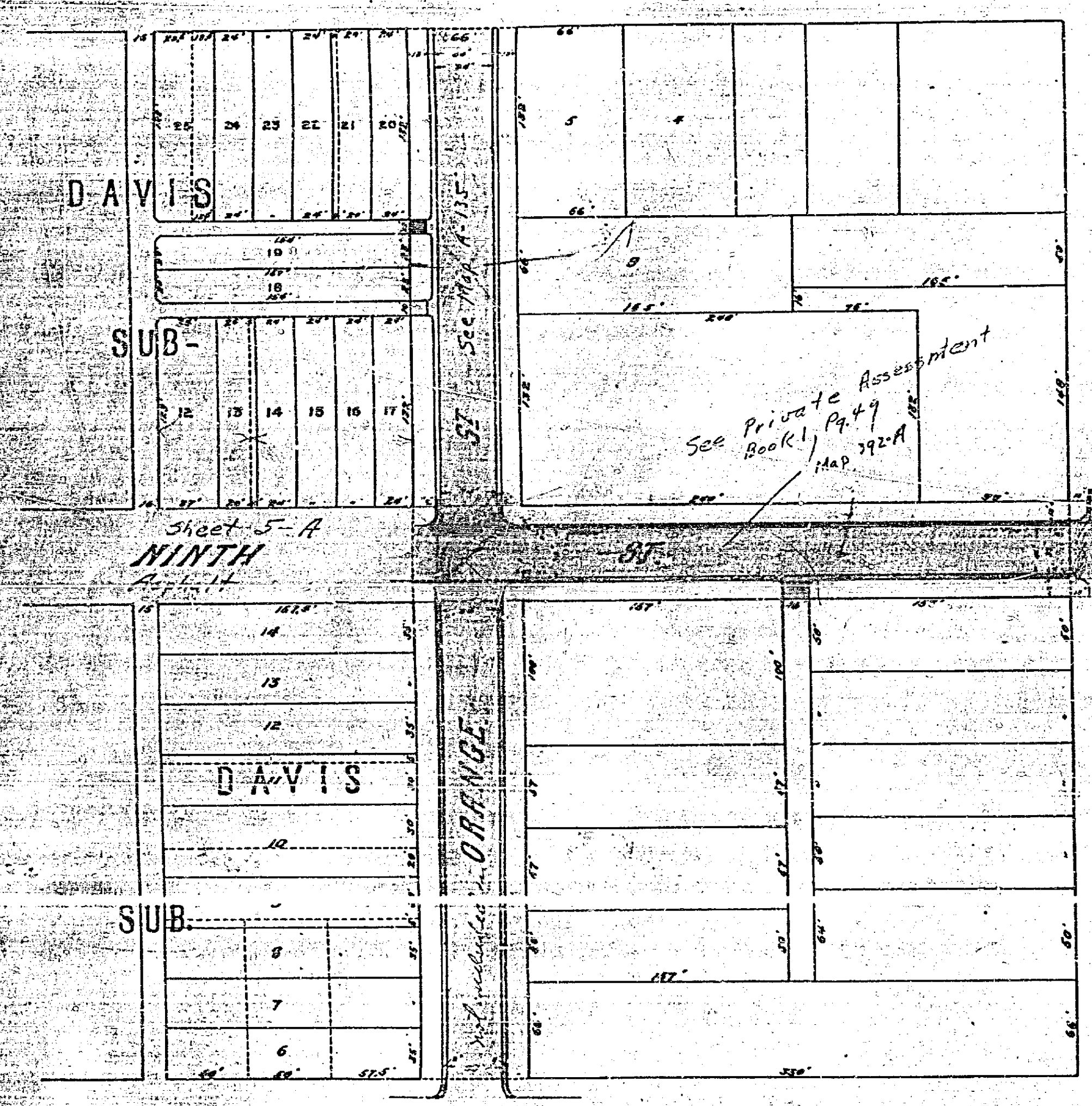
Map showing IMPROVEMENTS to be made on ORANGE and NINTH ST.
 Scale, cross-sections, 1 inch = 5 feet.
 1 inch = 1 foot.
 Scale of Map, 1 inch = 60 feet.
 A. P. Campbell, City Engineer.

15' out about 2 1/2" incl. from 1st cut

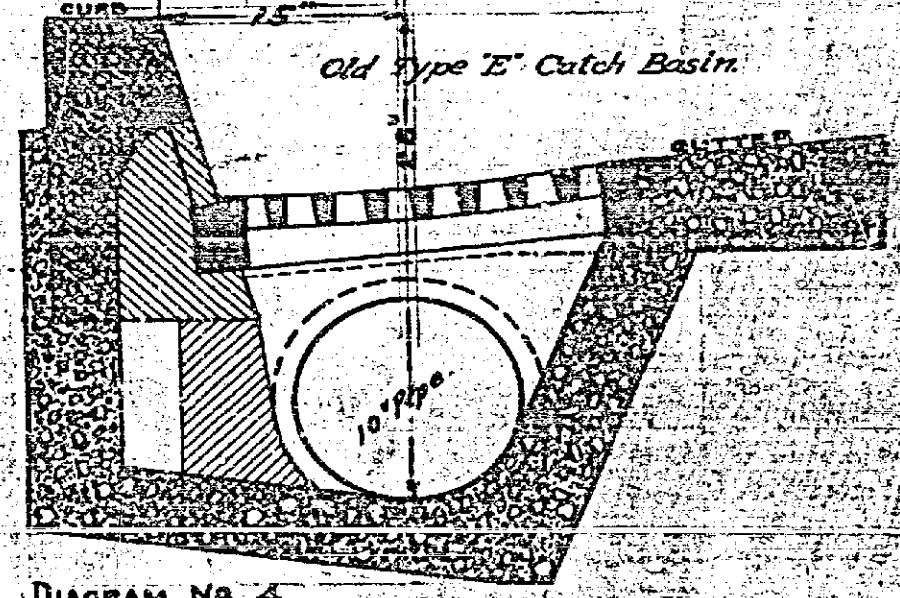
Cross-section of gutter. Gutter to be 24 inches wide less the gutter of the curb.

See Private Assessment Book 1, Pg. 49 MAP 192-A

Not included in diagram



IMPROVEMENTS TO BE MADE ON ORANGE ST. AND 9TH ST. ARE SHOWN ON THIS MAP AS FOLLOWS:
 Asphalt pavements to be constructed is shown thus: [Symbol]
 Portion of alley opposite termination to alley in Davis Subdivision to be asphalted 8 inch thick over the present constructed concrete base is shown thus: [Symbol]
 Concrete gutter to be constructed is shown thus: [Symbol]
 10 inch vitrified pipe drainage sewer to be constructed is shown thus: [Symbol]
 Type E catchbasins to be constructed are shown thus: [Symbol] lettered 'E'.
 Catch basins to be reset is shown thus: [Symbol] lettered 'E'.



Adopted by the Mayor and Common Council of the City of Riverside November 9/1909. Attest, [Signature]

NOTE: Private driveway shall be re-constructed according to the diagram for private driveways adopted by the Mayor & Common Council on September 14, 1909, except that an asphalt surface may be used if so desired.

Cross-section No. 5 showing the method of constructing pavement at the property lines of alley opposite terminations.

392