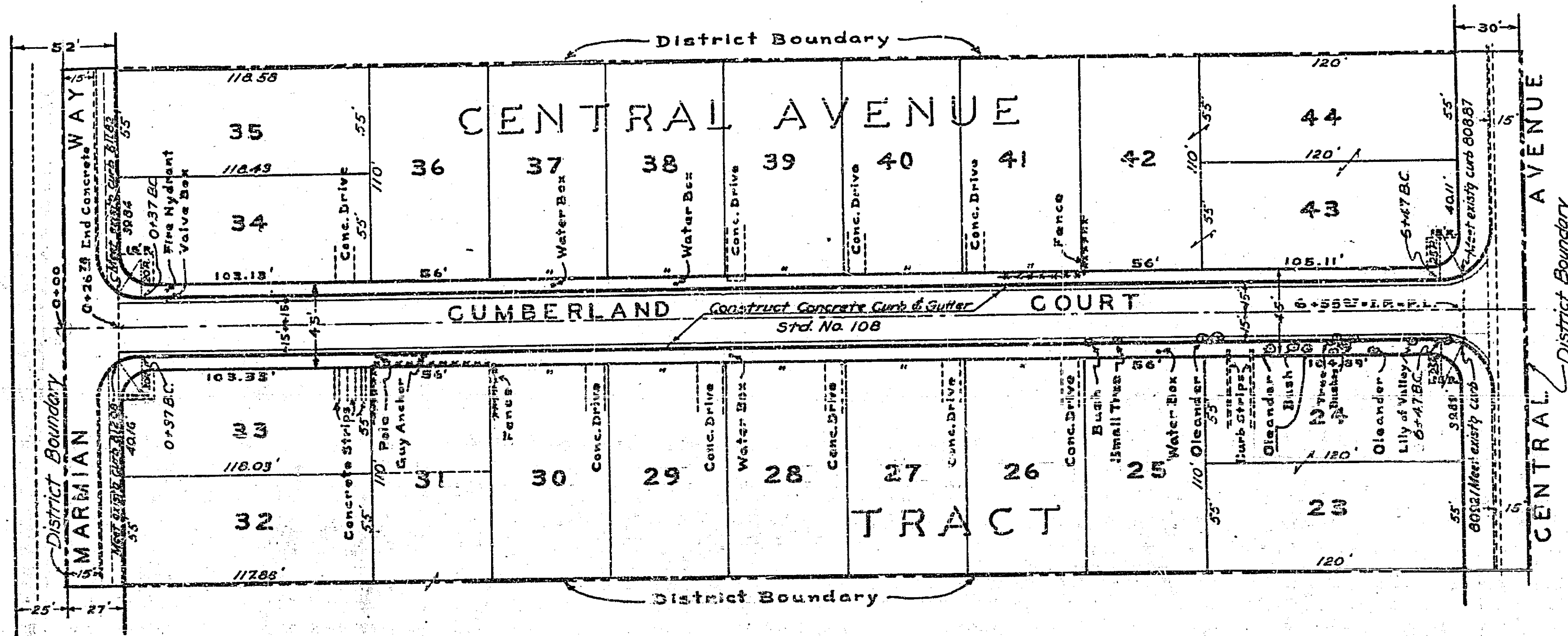


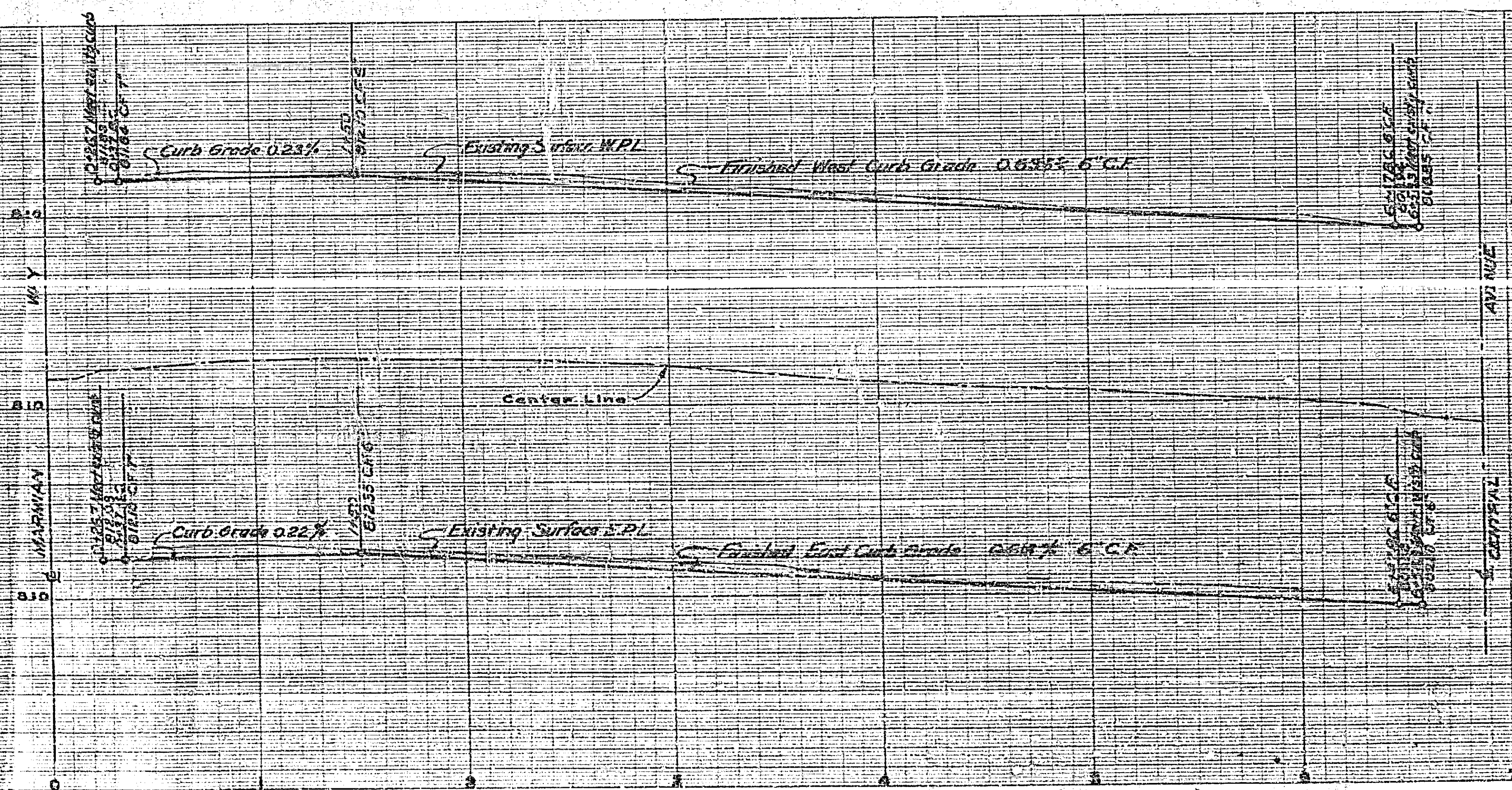
SCALE: 1" = 40'



PLAN & PROFILE
 NO. 397
 FOR THE CONSTRUCTION OF
 CURBS AND GUTTERS ON
CUMBERLAND COURT
 FROM MARMIAN WAY TO CENTRAL AVE.
 RIVERSIDE, CALIFORNIA

APPROVED *M. H. Lewis*
 CITY ENGINEER
 A CIVIL ENGINEER REGISTERED UNDER
 THE LAWS OF THE STATE OF CALIFORNIA
 REG. C.E. NO. 3011

THESE PLANS APPROVED AND ADOPTED BY THE MAYOR AND
 COUNCIL OF THE CITY OF RIVERSIDE STATE OF CALIFORNIA
 ON THIS 11th DAY OF January, 1940
William
 CITY CLERK



F.R. 446 P. 1-5
 654 19-5-12

SCALE: 1" = 4' VERT.
 1" = 40' HORIZ.

397