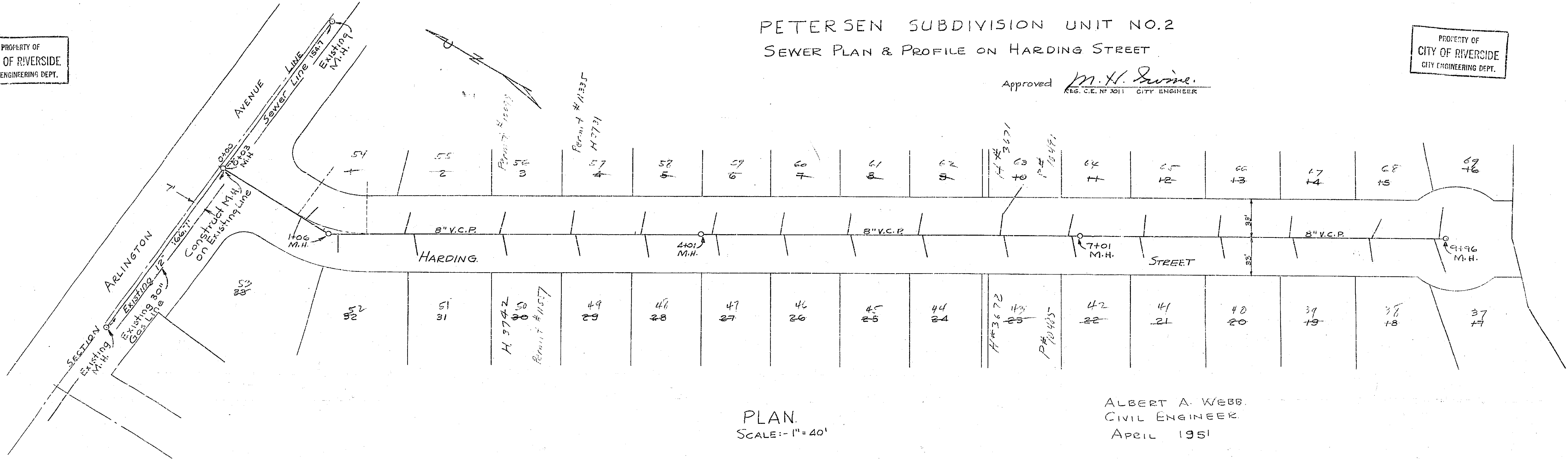


PROPERTY OF  
CITY OF RIVERSIDE  
CITY ENGINEERING DEPT.

PETERSEN SUBDIVISION UNIT NO.2  
SEWER PLAN & PROFILE ON HARDING STREET

PROPERTY OF  
CITY OF RIVERSIDE  
CITY ENGINEERING DEPT.

Approved *M. H. Irvine.*  
REG. C.E. NO 3011 CITY ENGINEER



PLAN.  
SCALE: 1" = 40'

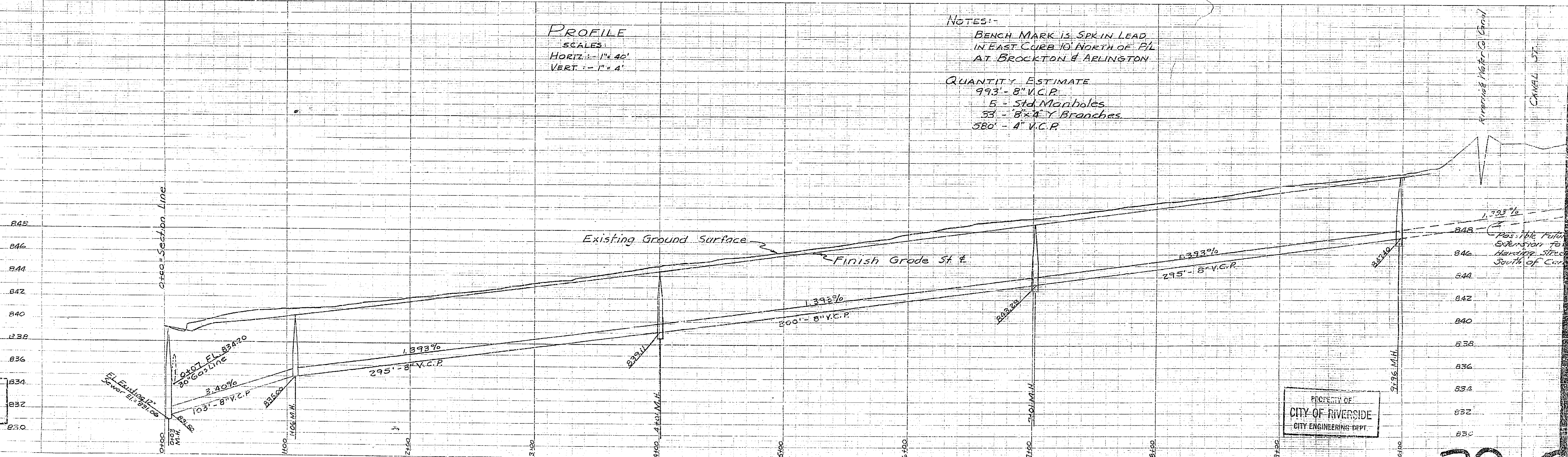
ALBERT A. WEBB.  
CIVIL ENGINEER.  
APRIL 1951

PROFILE  
SCALE:  
HORIZ. 1" = 40'  
VERT. 1" = 4'

NOTES:-

BENCH MARK IS SPR IN LEAD  
IN EAST CURB 10' NORTH OF P.L.  
AT BROCKTON & ARLINGTON

QUANTITY ESTIMATE  
993' - 8" V.C.P.  
5 - Std. Manholes  
33 - 8" x 4" Y Branches  
580' - 4" V.C.P.



PROPERTY OF  
CITY OF RIVERSIDE  
CITY ENGINEERING DEPT.

PROPERTY OF  
CITY OF RIVERSIDE  
CITY ENGINEERING DEPT.

39-A