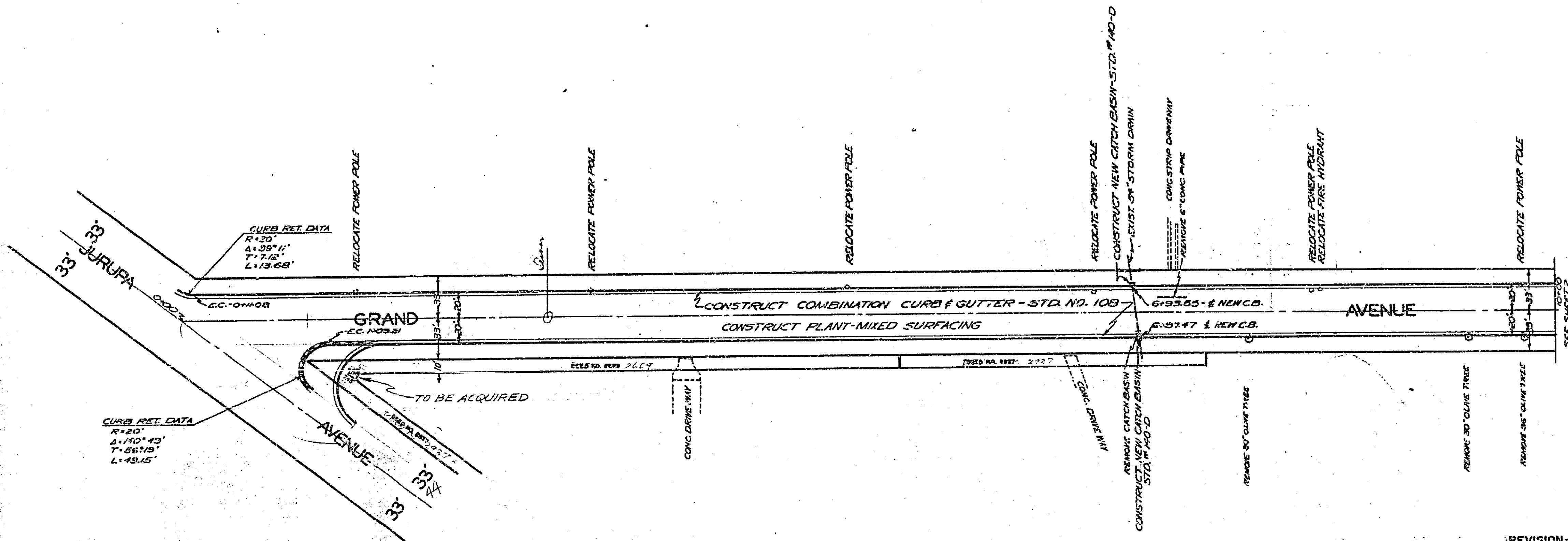


PLAN AND PROFILE  
 NO. 401  
 FOR THE PROPOSED IMPROVEMENT OF  
**GRAND AVENUE**  
 BETWEEN JURUPA AVENUE AND BANDINI AVENUE  
 BEING A  
 MAJOR CITY STREET  
 RIVERSIDE, CALIFORNIA



APPROVED *M. H. Irvine*  
 M. H. IRVINE, REG. C. E. NO. 3011  
 CITY ENGINEER

F.B. 493/22-75

SCALES: HORIZ. 1" = 50'  
 VERT. 1" = 5'

REVISION - JAN. 16, 1957  
 Remove existing curb & gutter  
 Construct 33' Radius curb & gutter as shown.

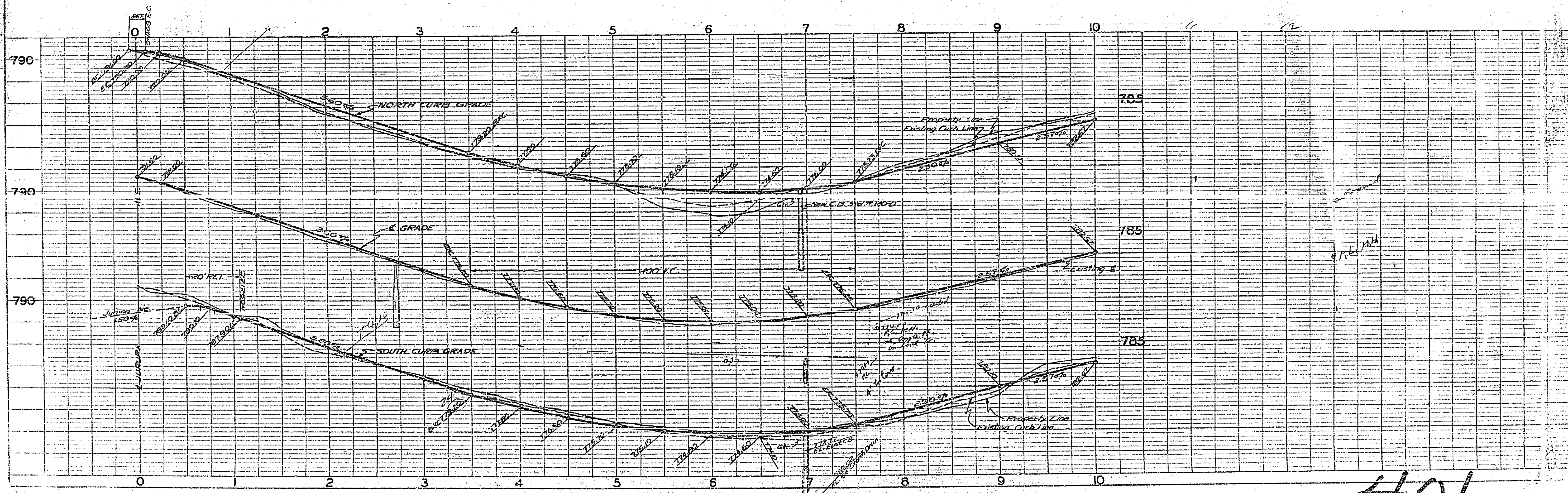


PLATE 1 - PLAN-PROFILE  
 R. R. E. STANDARD  
 KRUEPPEL & CO., NEW YORK  
 H. E. CO. NO. 540-10

401



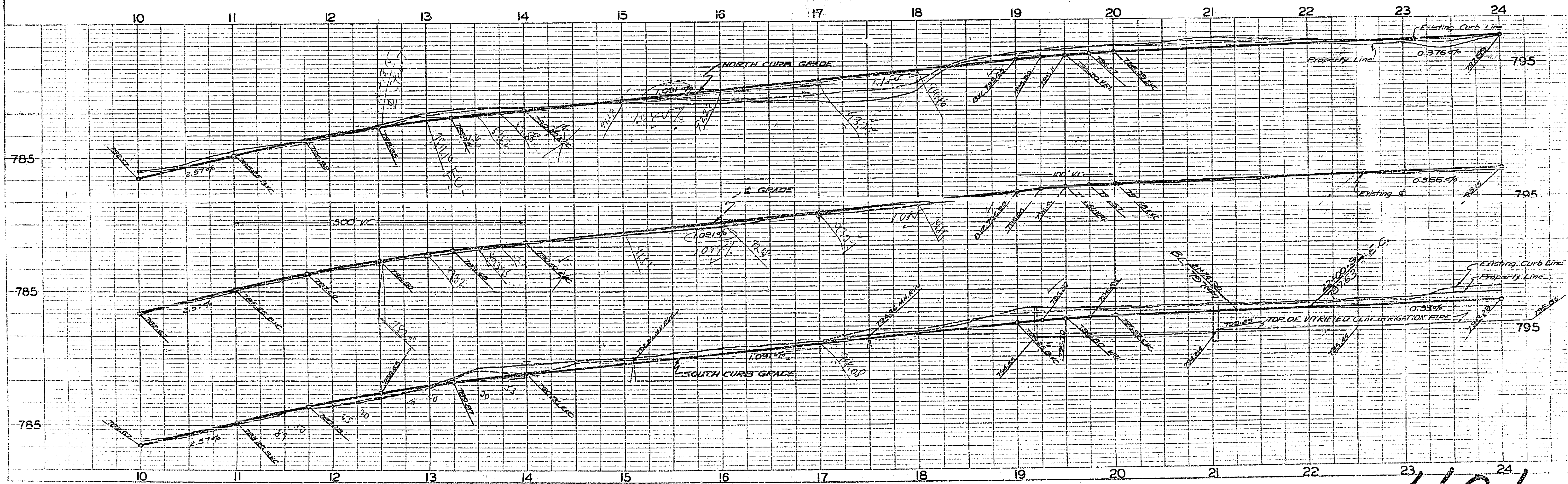
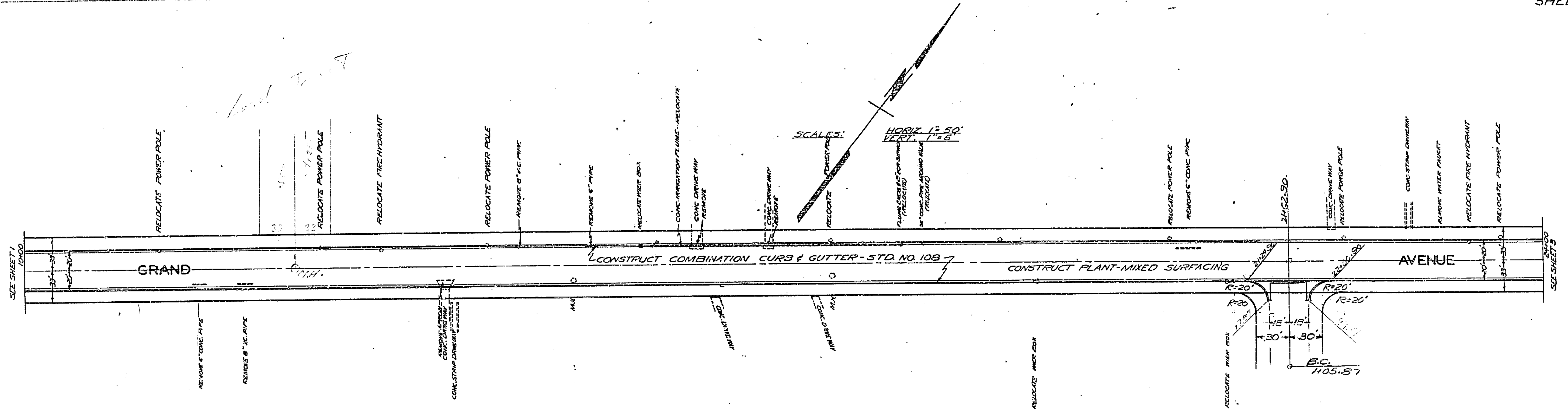


PLATE 1 - PLAN-PROFILE G.P. & R. & STANDARD  
 KELFEL & ESSER CO., NEW YORK  
 SCALE 1" = 50'

401







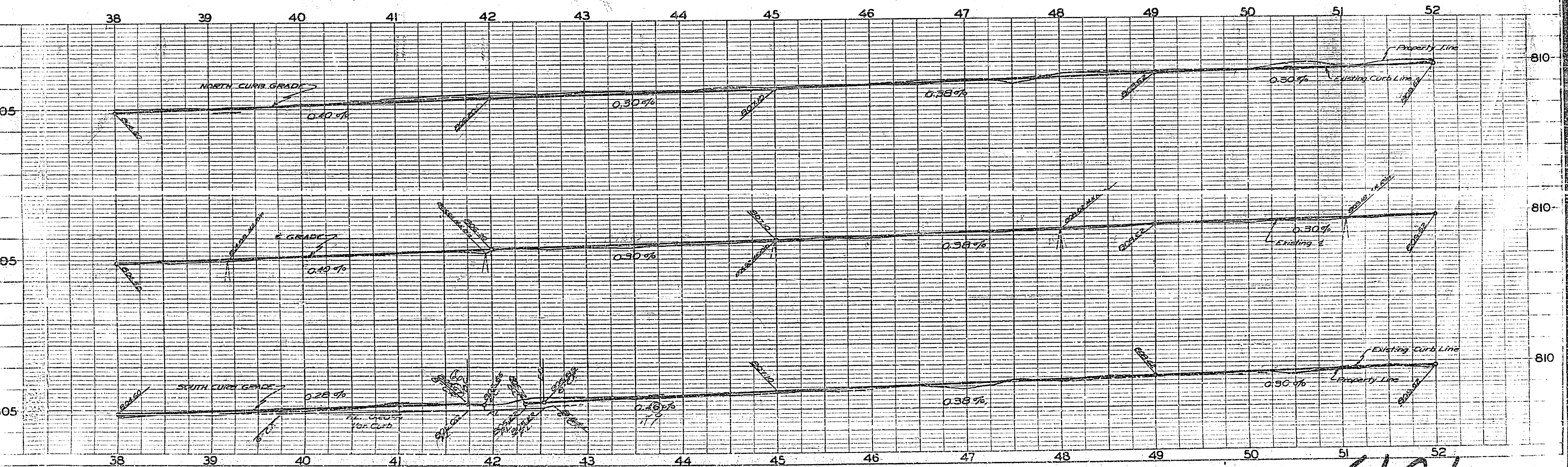
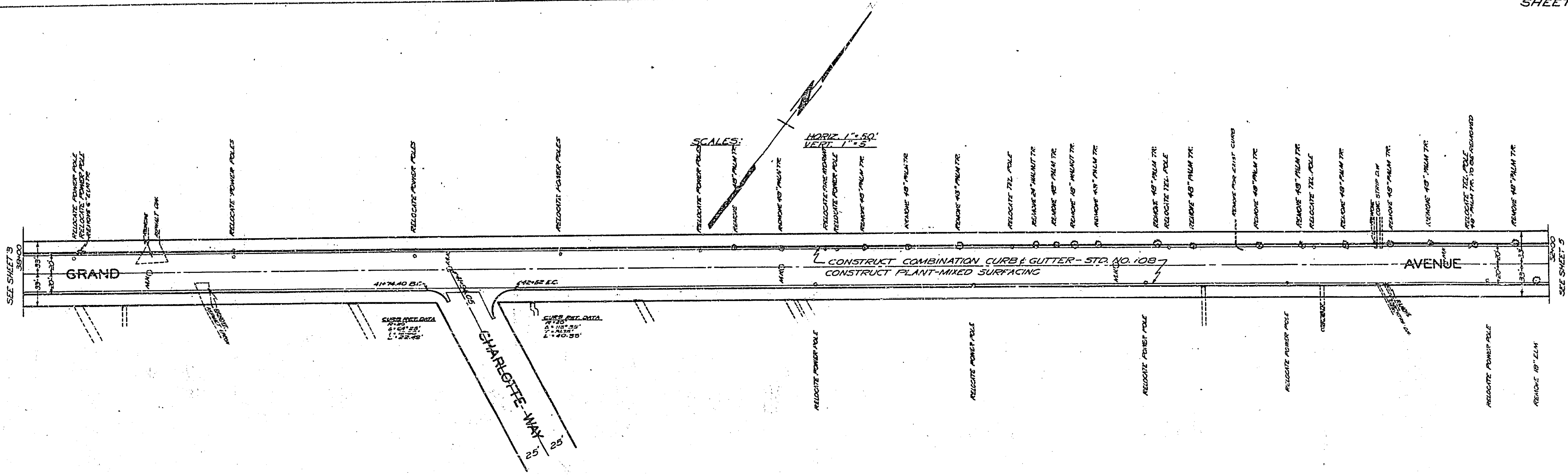
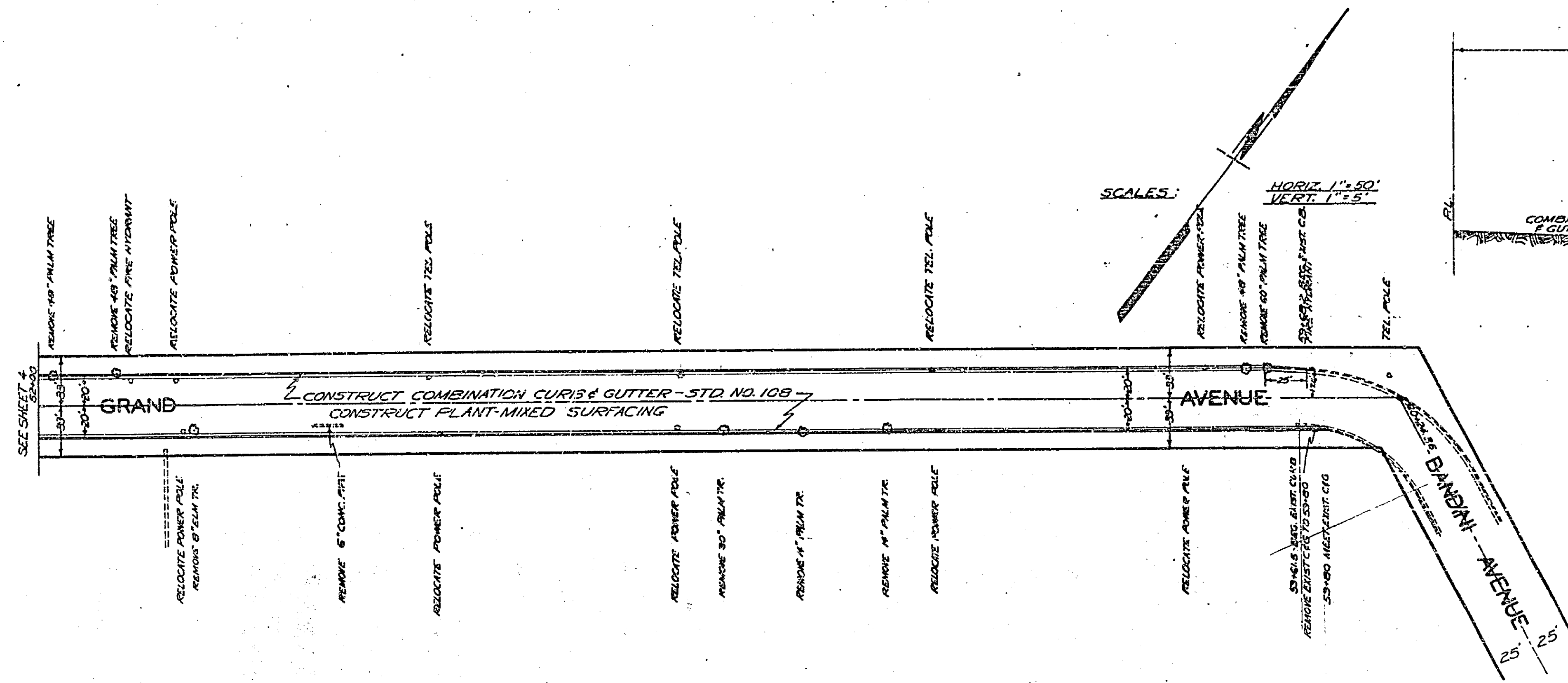


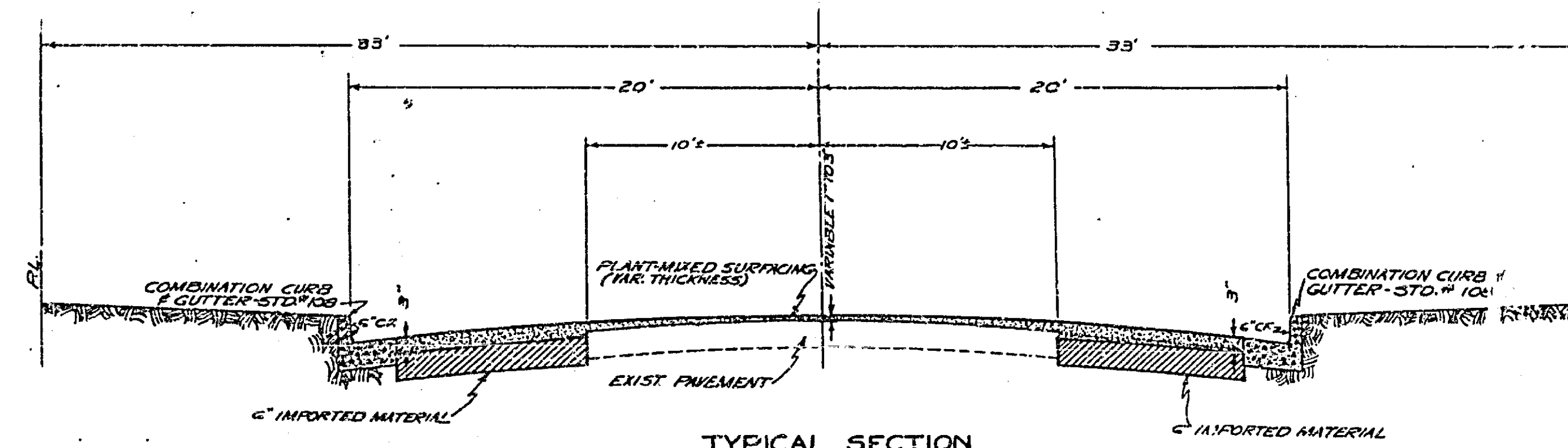
PLATE 1 - PLAN-PROFILE C. P. R. & S. STANDARD  
 KENNEDY & CO. NEW YORK  
 N. Y. C. No. 2-60-115

401





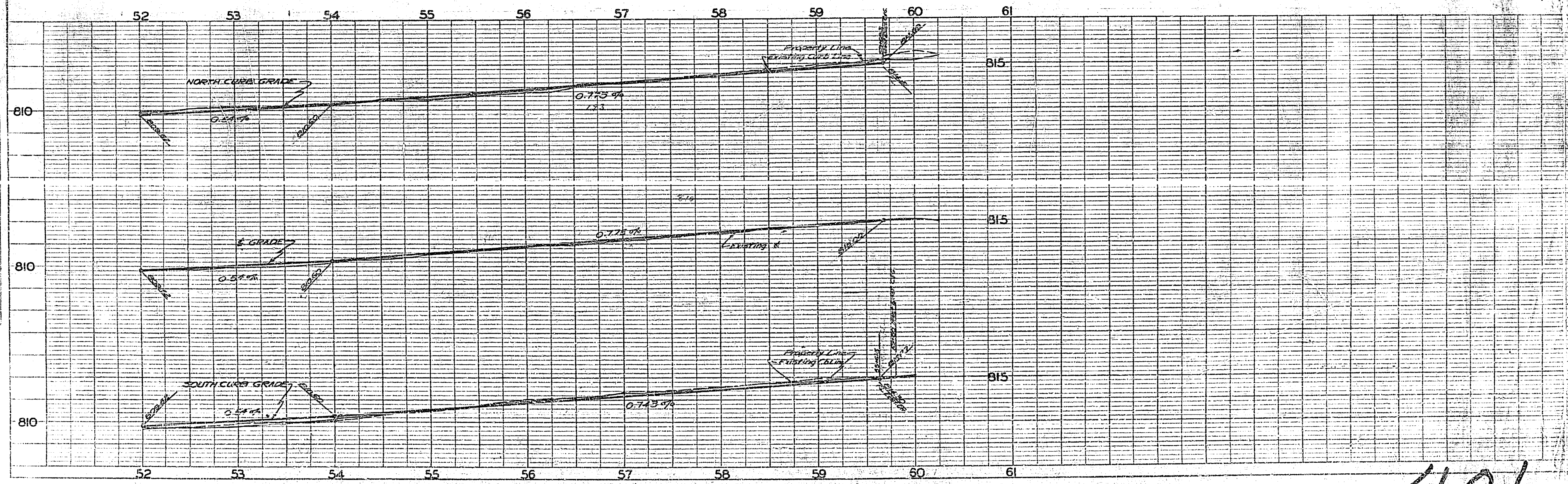
SCALES:  
HORIZ. 1" = 50'  
VERT. 1" = 5'



TYPICAL SECTION  
SCALES: HORIZ. 1" = 5'  
VERT. 1" = 5'

**STANDARD DETAIL DRAWINGS**

CATCH BASIN # 140-D  
CATCH BASIN FRAME & COVER # 123  
COMBINATION CURB & GUTTER # 108



401