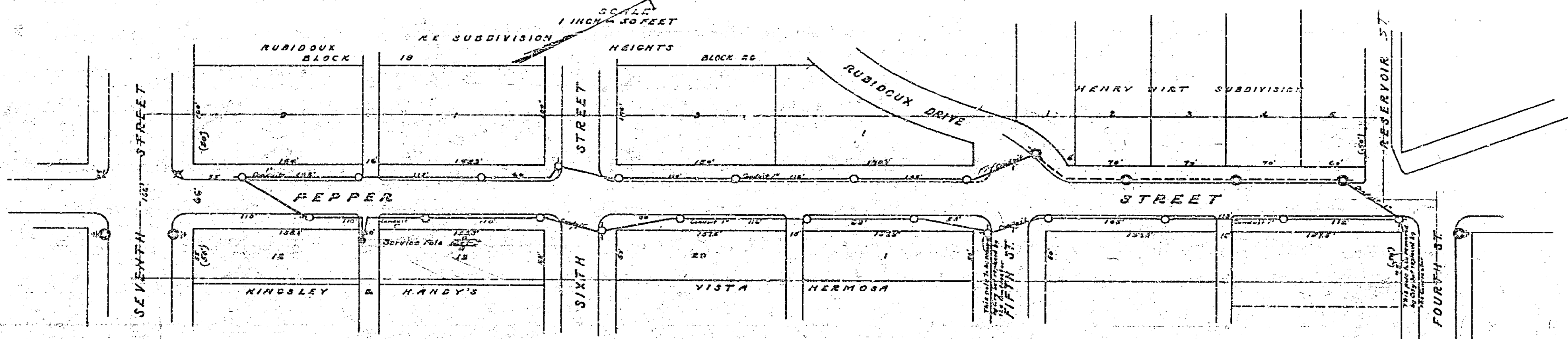


Approved by the Mayor and Common Council of the City of Riverside, Wis. 11th day of January, 1927.
Wm. J. O'Sullivan
 City Clerk.

MAP OF PROPOSED LIGHTING SYSTEM ON PEPPER STREET BETWEEN FOURTH & SEVENTH STREETS
 A. P. CAMPBELL, CITY ENGINEER, 1927.

MAP NO. 407-B



LEGEND
 Poles to be installed (Standard Electric Drawing No. 2000 City Eng Dept)
 Poles to have top changed to conform to Standard Design No. 2000
 Poles to be removed by City Electric Light Dept and replaced by Standard Design No. 2000
 Poles already in place no change to be made
 Special light Standard in place no change to be made
 Conduits to be laid
 District Boundary
 Conduits already in place
 Service Pole

Approved *E. J. ...*
 Supr. Electric Light Dept

MAP NO. 407-B

407 B