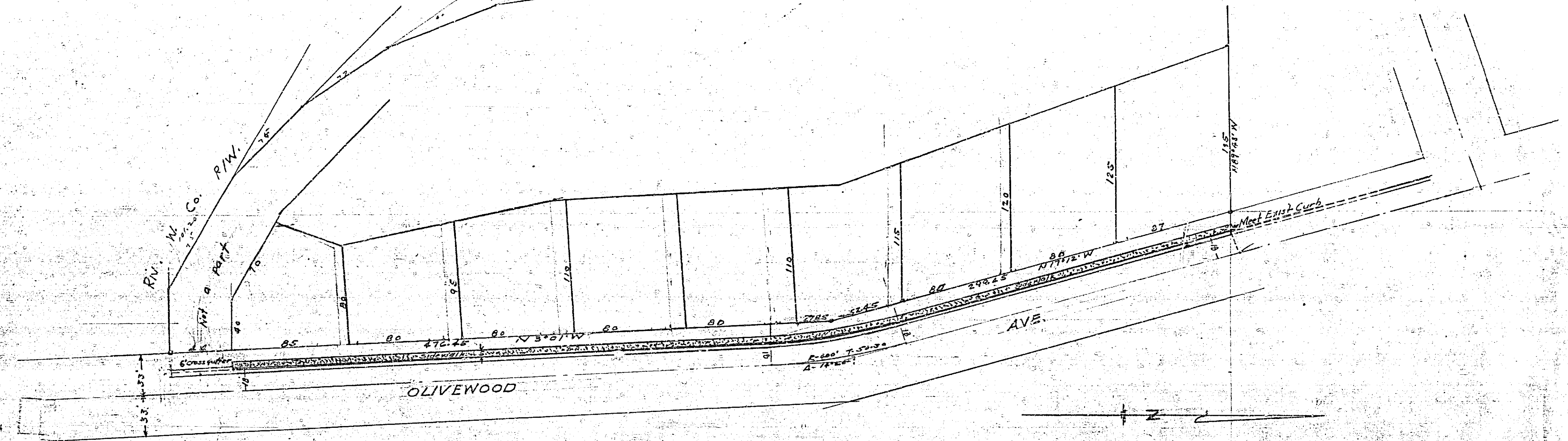


PROPERTY OF  
CITY OF RIVERSIDE  
CITY ENGINEERING DEPT.

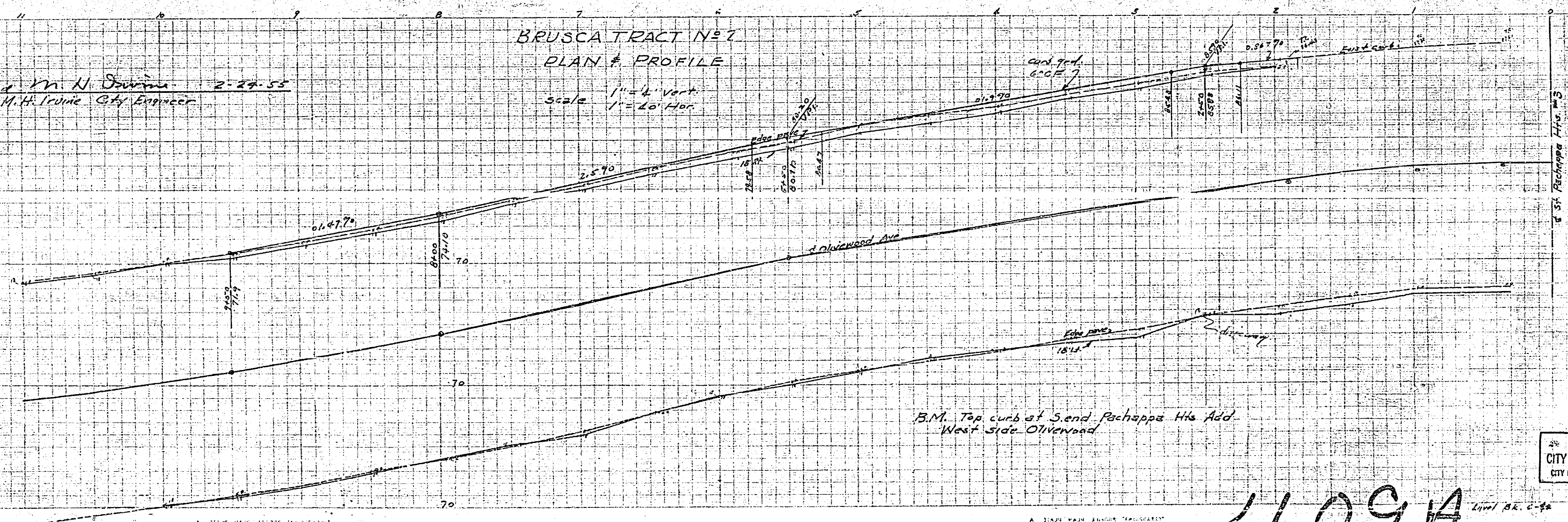
PROPERTY OF  
CITY OF RIVERSIDE  
CITY ENGINEERING DEPT.



Approved *M. H. Irvine* 2-24-55  
M. H. Irvine City Engineer

BRUSCA TRACT No. 7  
PLAN & PROFILE

Scale 1" = 4' Vert.  
1" = 40' Hor.



PROPERTY OF  
CITY OF RIVERSIDE  
CITY ENGINEERING DEPT.

PROPERTY OF  
CITY OF RIVERSIDE  
CITY ENGINEERING DEPT.

409A