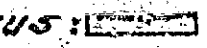
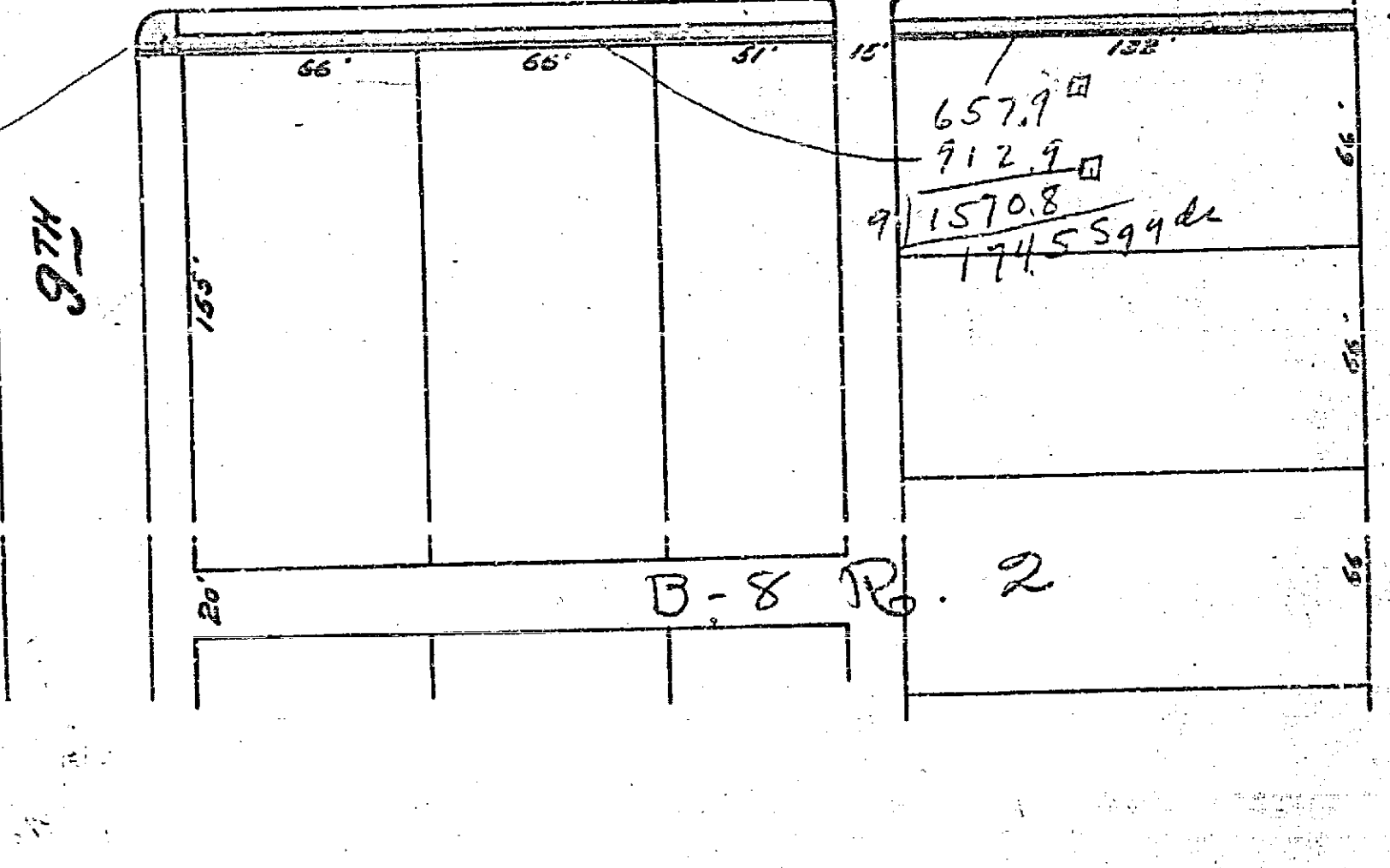
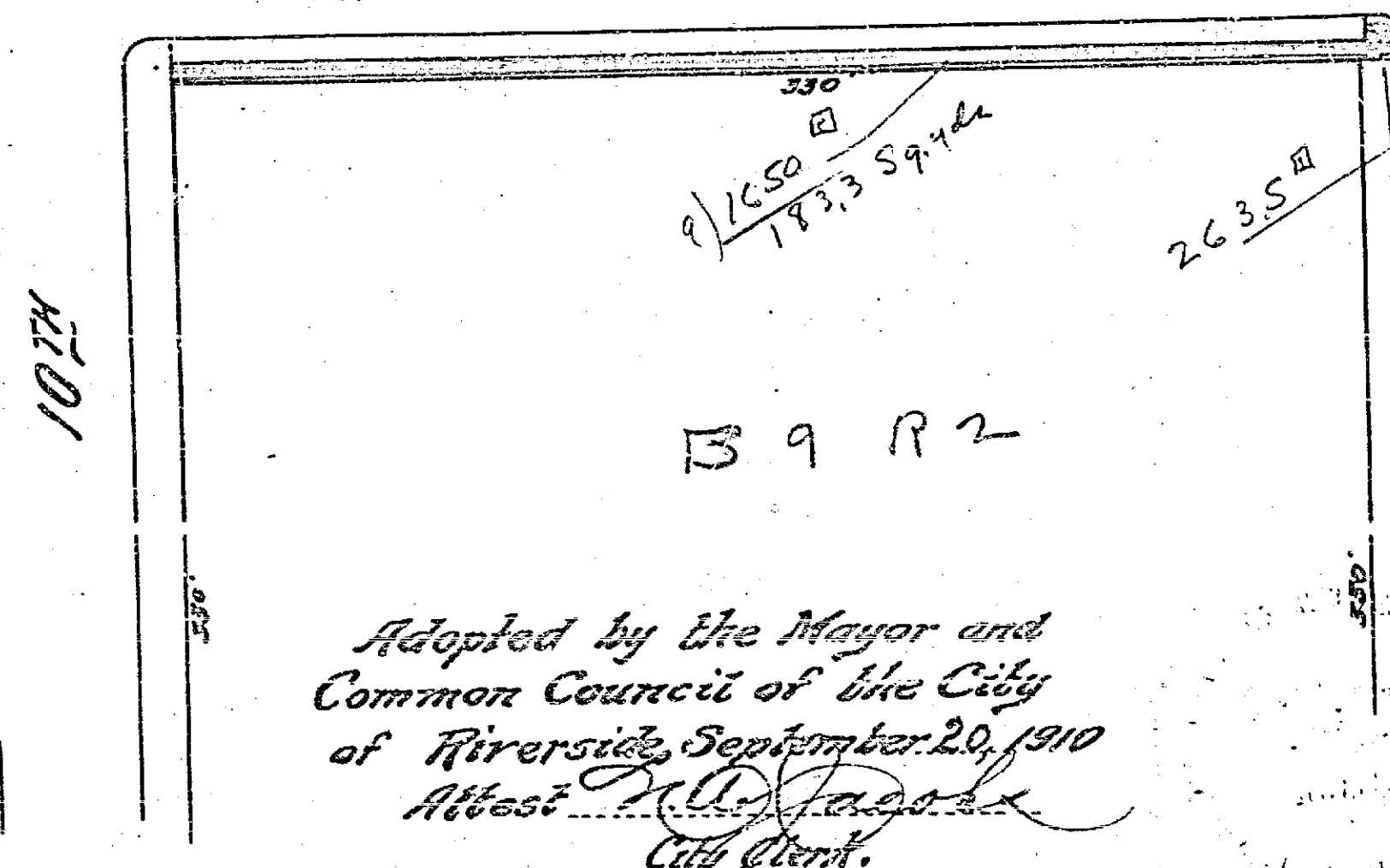
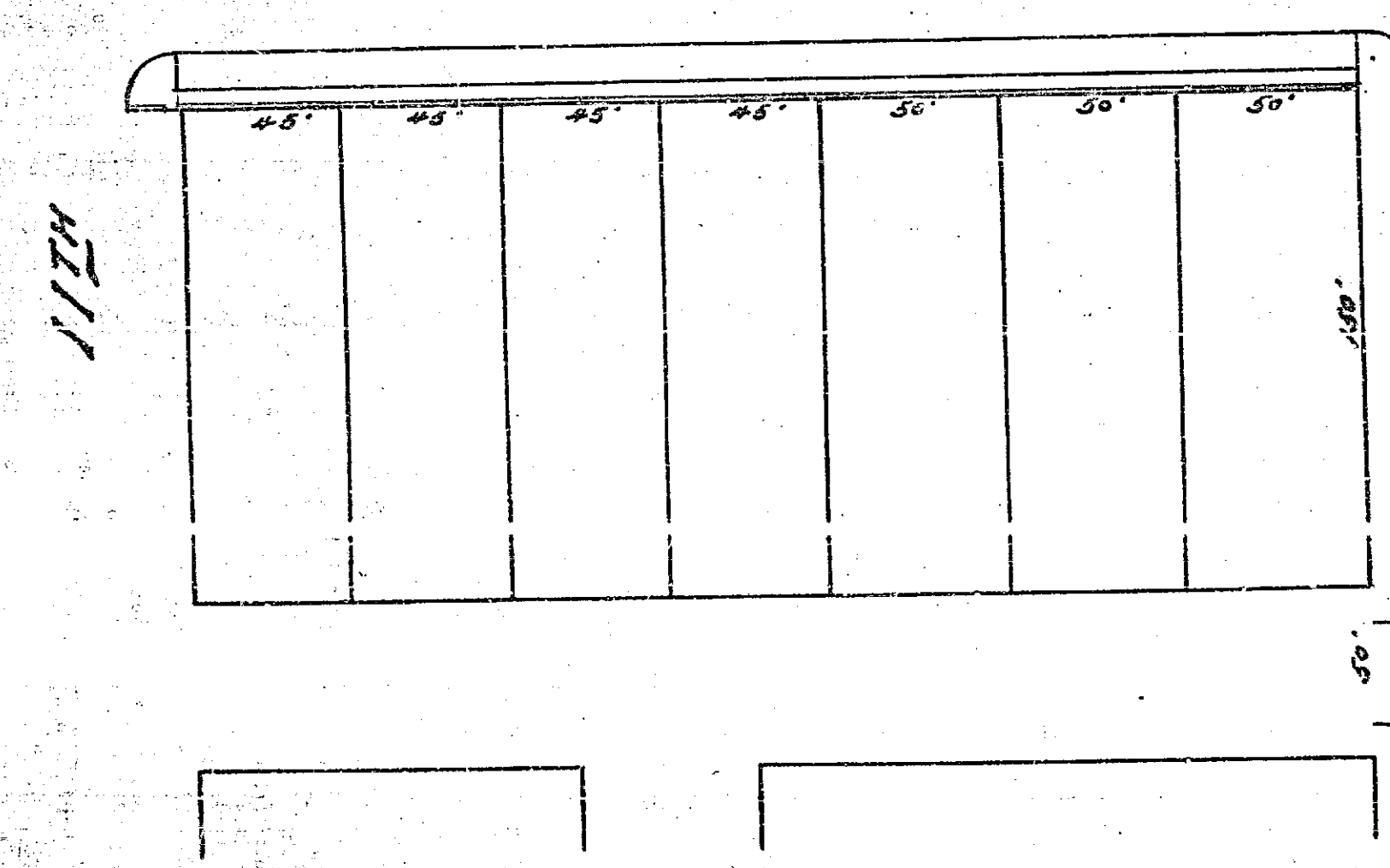
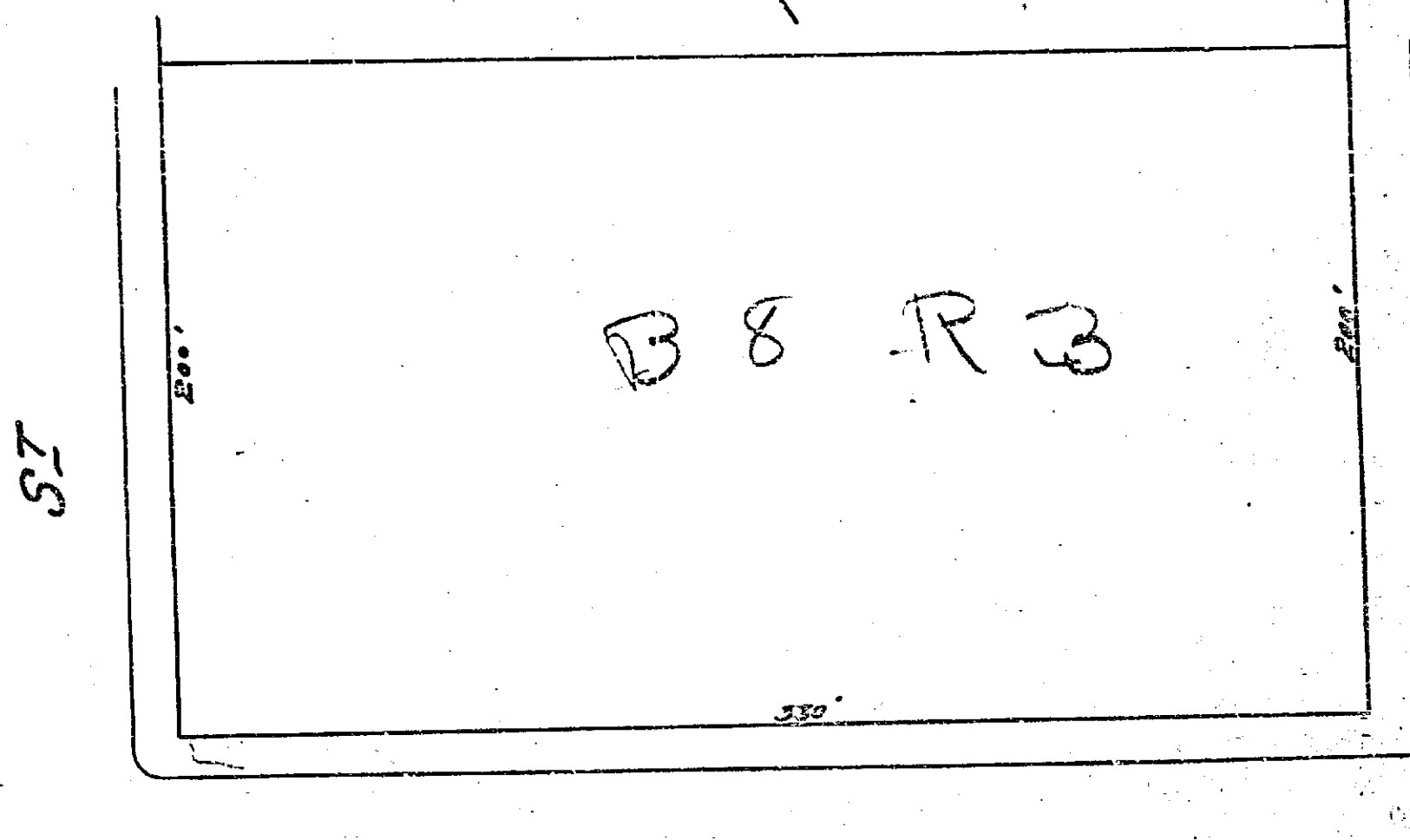
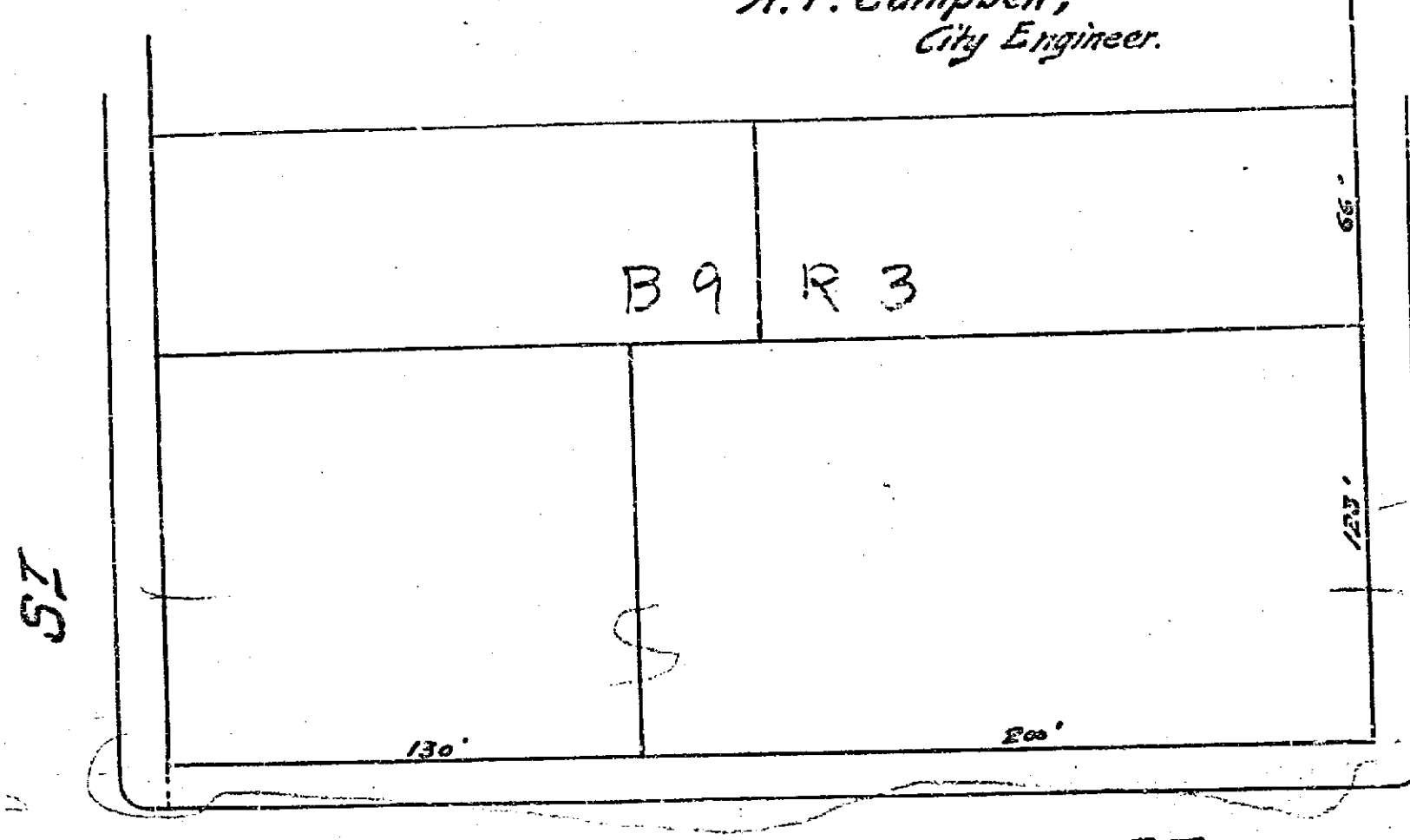
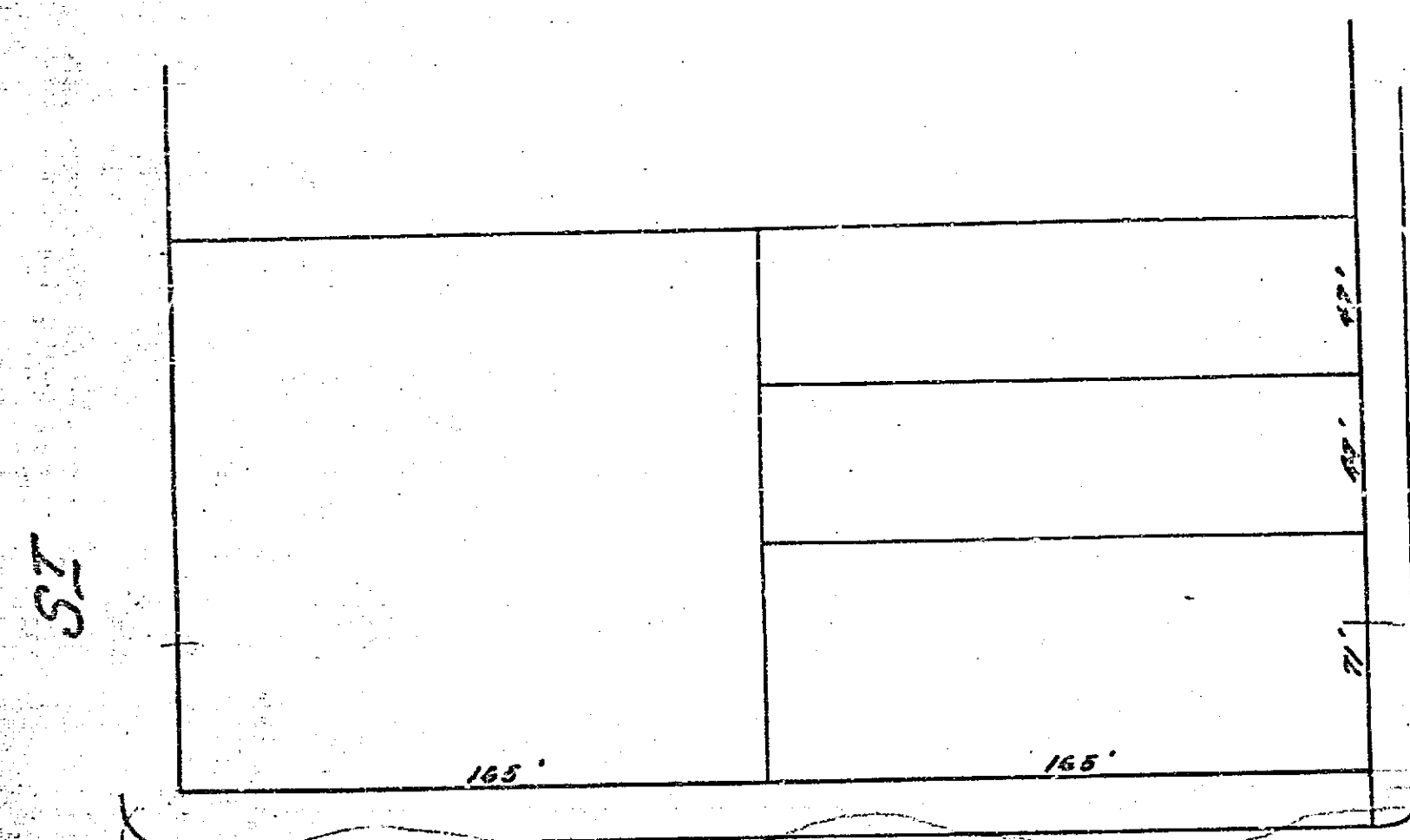


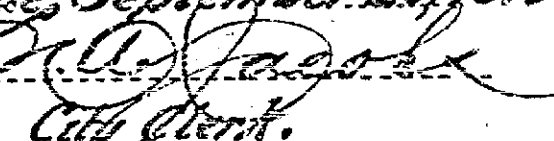
MAP SHOWING SIDEWALK TO BE CONSTRUCTED ON MULBERRY ST.

Scale
1 inch = 60 feet.

A. P. Campbell,
City Engineer.

Note -
Cement Sidewalk to be
constructed is shown thus: 



Adopted by the Mayor and
Common Council of the City
of Riverside, September 20, 1910
Attest 
City Clerk.

410 A