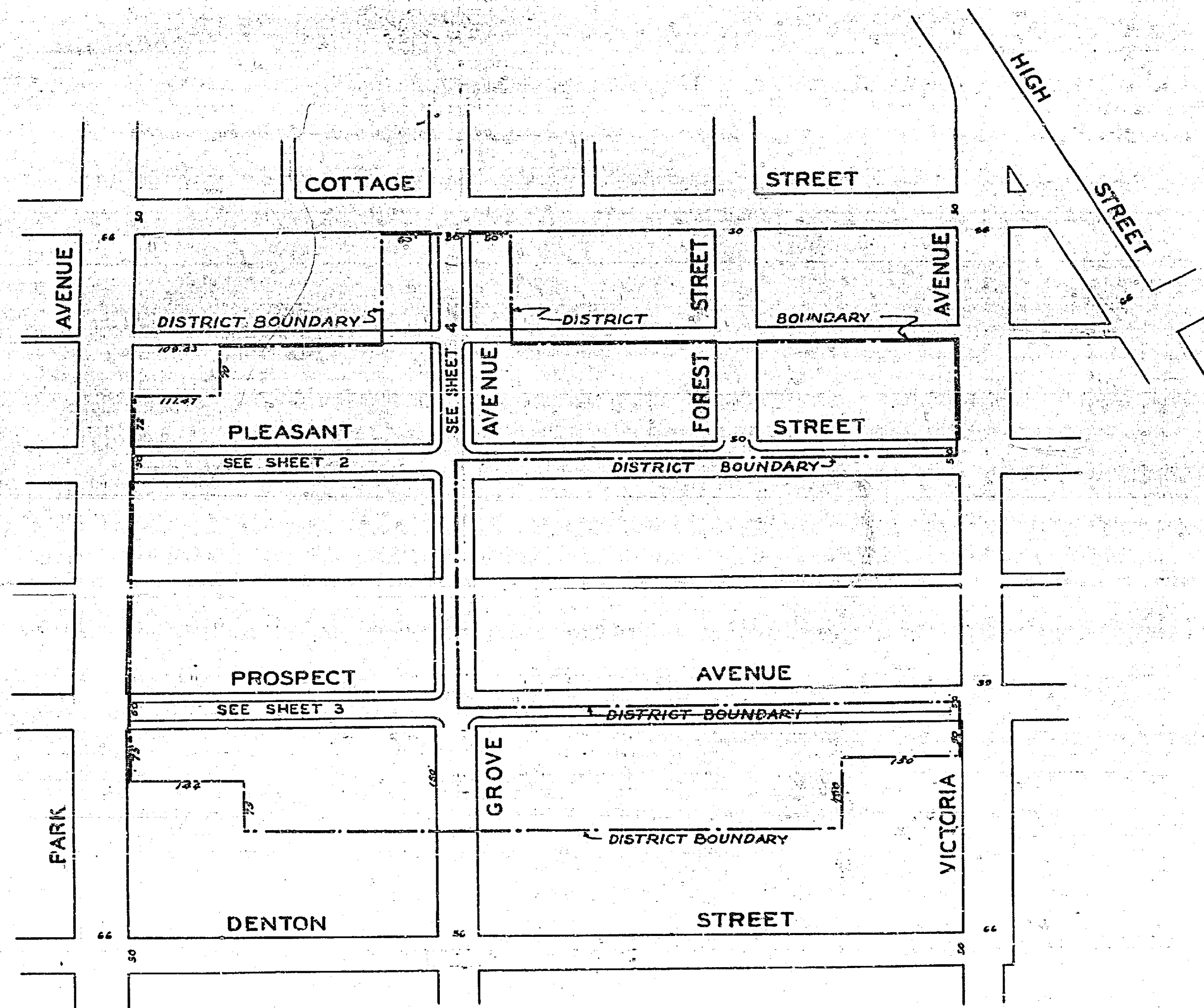
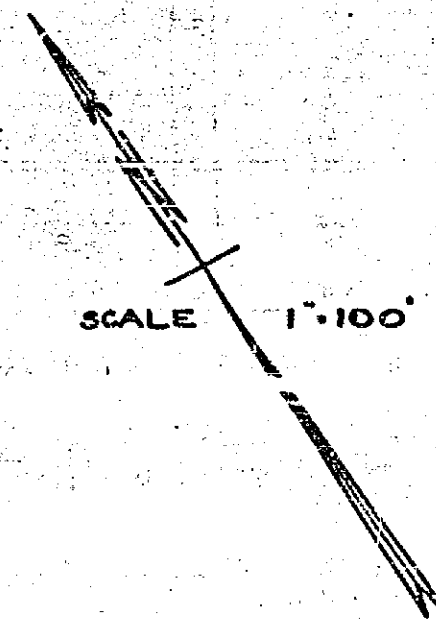


PLANS AND PROFILES
NO 412
OF
PLEASANT-PROSPECT IMPROVEMENT DISTRICT

RIVERSIDE CALIFORNIA
S.C. FB. 483

APPROVED M. H. Irvine
M. H. IRVINE REG. C.E. NO. 3011
CITY ENGINEER

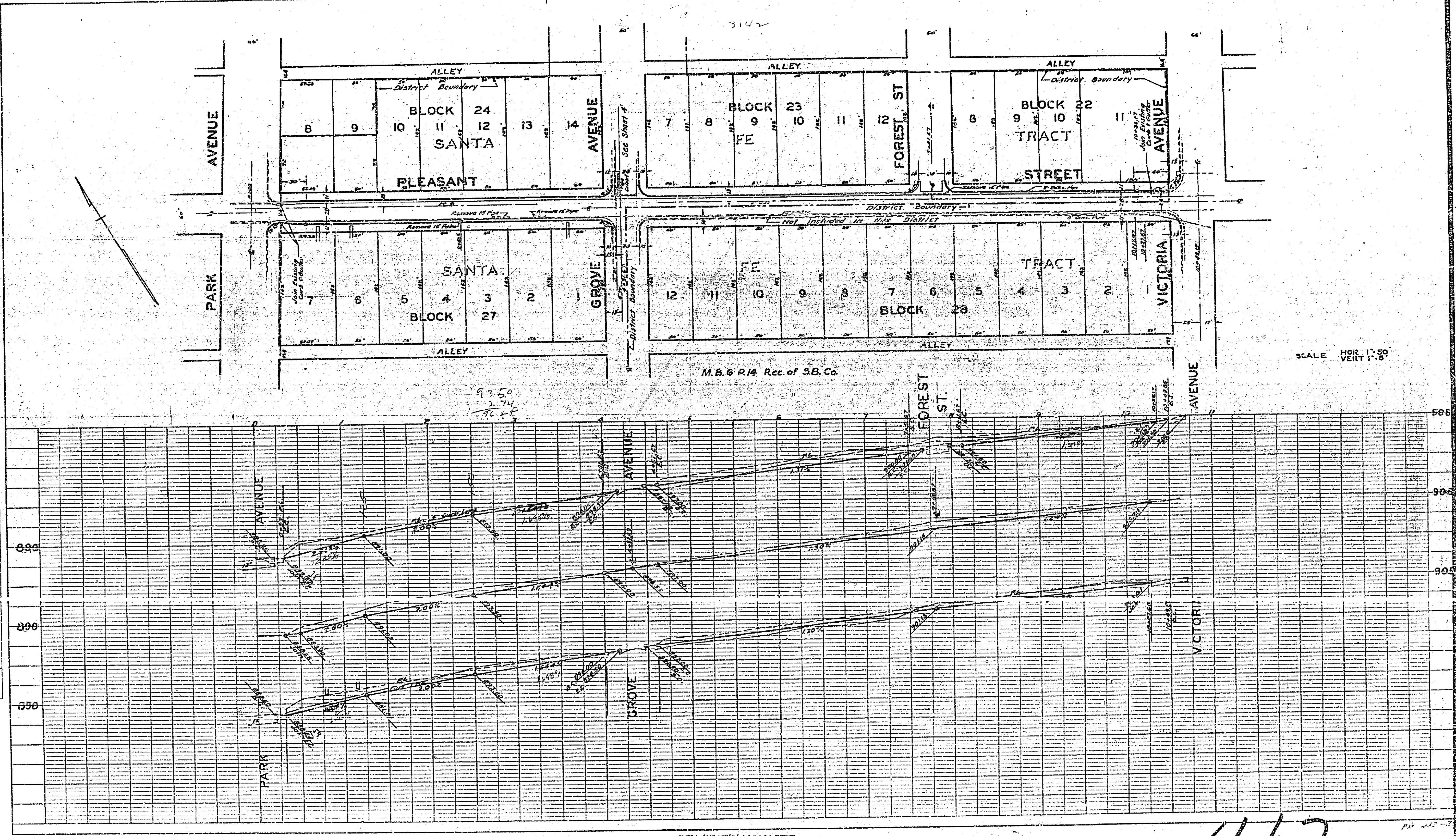
THESE PLANS APPROVED AND ADOPTED BY
THE MAYOR AND COUNCIL OF THE CITY OF
RIVERSIDE, STATE OF CALIFORNIA ON THIS
12 DAY OF July 1930
[Signature]
CITY CLERK



412

PLAN	DATE	BY
REVISIONS		
NO.	DATE	BY
1		
2		
3		
4		
5		
6		
7		
8		
9		
10		
11		
12		
13		
14		
15		
16		
17		
18		
19		
20		
21		
22		
23		
24		
25		
26		
27		
28		
29		
30		
31		
32		
33		
34		
35		
36		
37		
38		
39		
40		
41		
42		
43		
44		
45		
46		
47		
48		
49		
50		

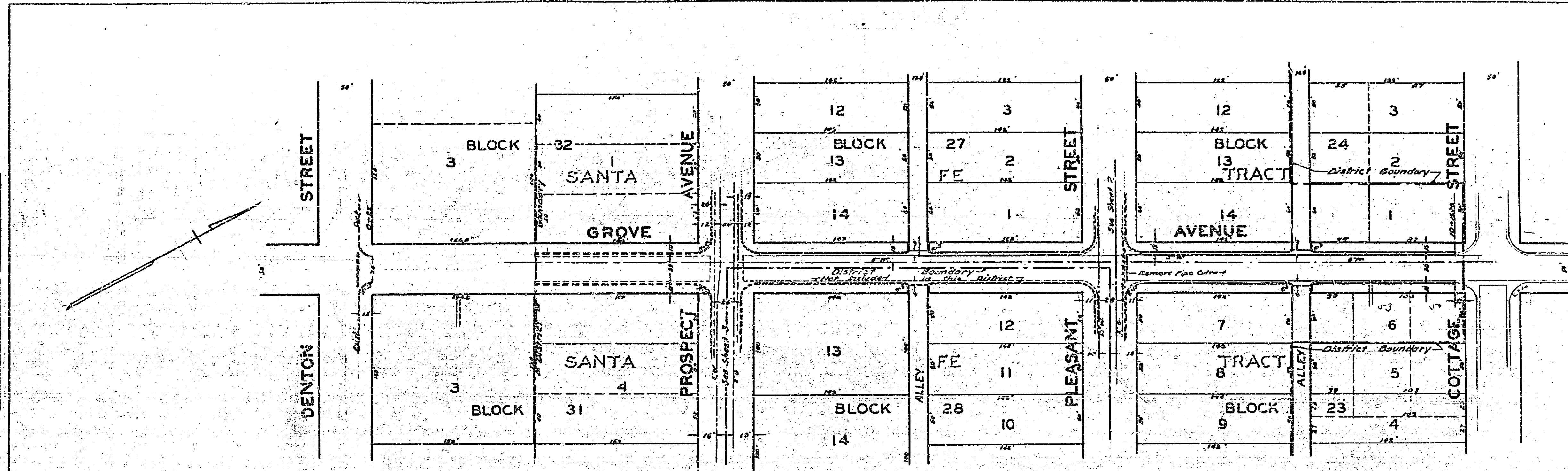
PROFILE	DATE	BY
REVISIONS		
NO.	DATE	BY
1		
2		
3		
4		
5		
6		
7		
8		
9		
10		
11		
12		
13		
14		
15		
16		
17		
18		
19		
20		
21		
22		
23		
24		
25		
26		
27		
28		
29		
30		
31		
32		
33		
34		
35		
36		
37		
38		
39		
40		
41		
42		
43		
44		
45		
46		
47		
48		
49		
50		



SCALE HOR 1"=50' VERT 1"=5'

412

PLAN	DATE
NO.	
REVISION	
NO.	
NOTE BOOK CHECKED	
NO.	
REVISION	
NO.	



M.B. 6 P. 14 Rec. of S.B. Co.

SCALE HOR 1" = 50' VERT 1" = 5'

PROFILE	DATE
NO.	
REVISION	
NO.	
NOTE BOOK CHECKED	
NO.	
REVISION	
NO.	

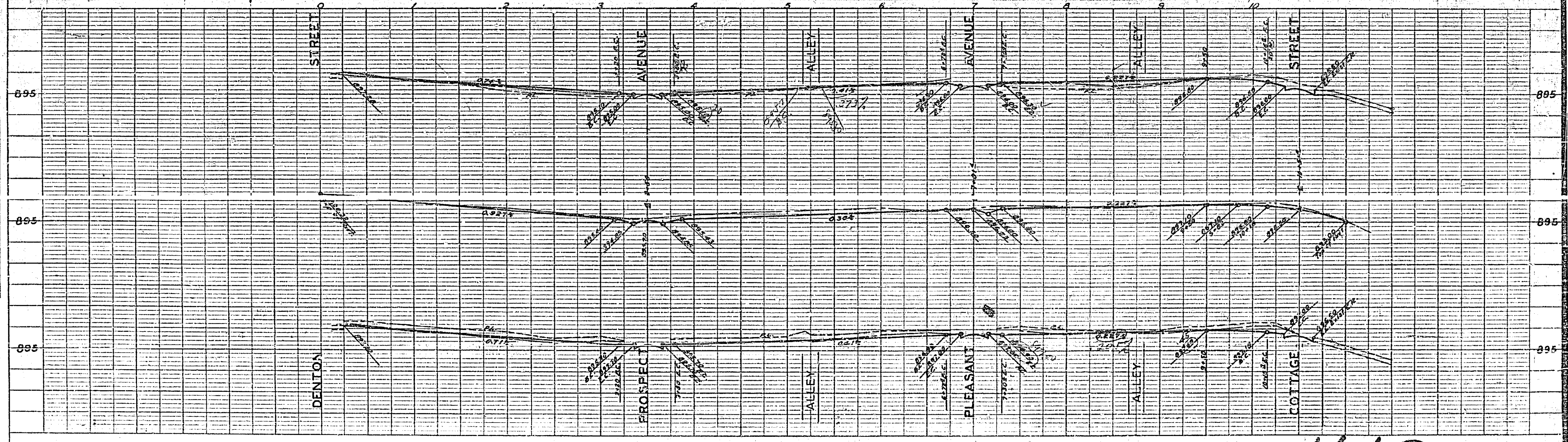


PLATE 1-PLAN-PROFILE O. P. & A. E. STAMOND

REDFIELD & ESSER CO., NEW YORK

412

FEB 25 1911