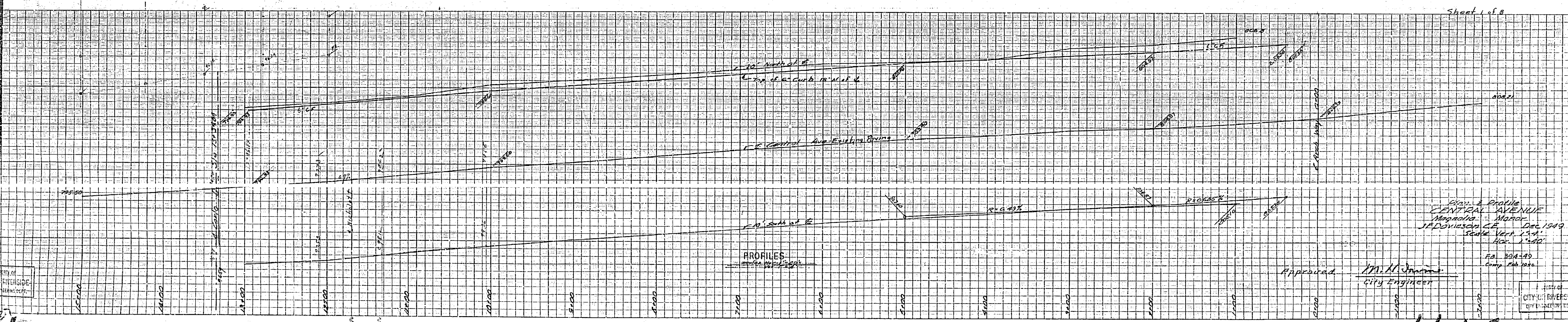
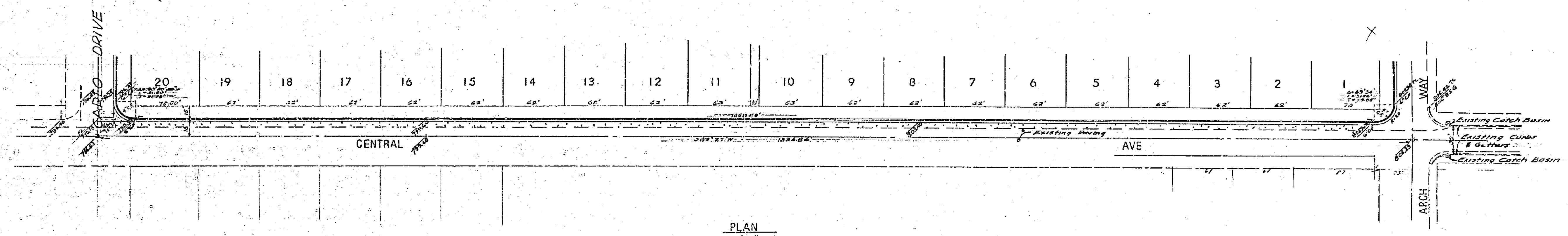


CITY OF  
RIVERSIDE  
ENGINEERING

CITY OF  
RIVERSIDE  
ENGINEERING



Sheet 1 of 8  
 Plan & Profile  
 CENTRAL AVENUE  
 Magnolia, March  
 J. D. Kinsman, C.E.  
 Dec. 1949  
 Scale Vert. 1"=40'

Approved: K. M. Williams  
 City Engineer

FA. 39A-49  
 Comp. Feb. 1950

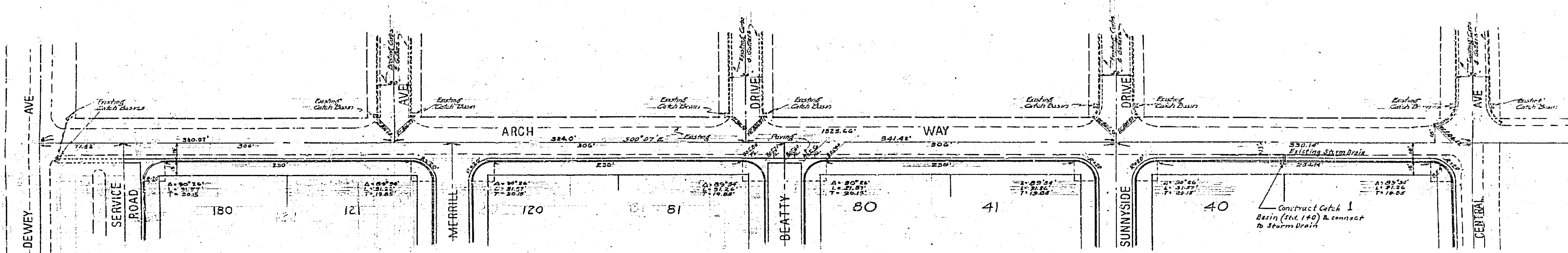
CITY OF  
RIVERSIDE  
ENGINEERING

413



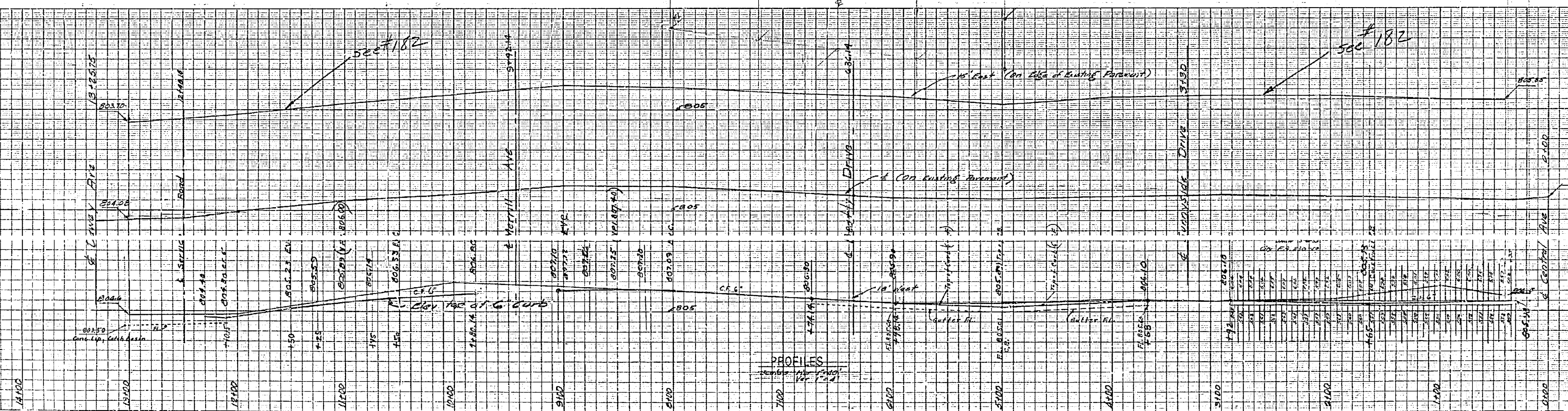
CITY OF RIVERSIDE  
ENGINEER'S DEPT.

PROPERTY OF  
CITY OF RIVERSIDE  
CITY ENGINEER'S DEPT.



PLAN  
Scale 1"=40'

Sheet 2 of 8



PLAN & PROFILES  
MAGNOLIA MANOR  
ARCH WAY  
DRAWN BY J.A. DAVIDSON  
J.A. DAVIDSON C.E.

Approved: *M.H. Irvine*  
City Engineer

413

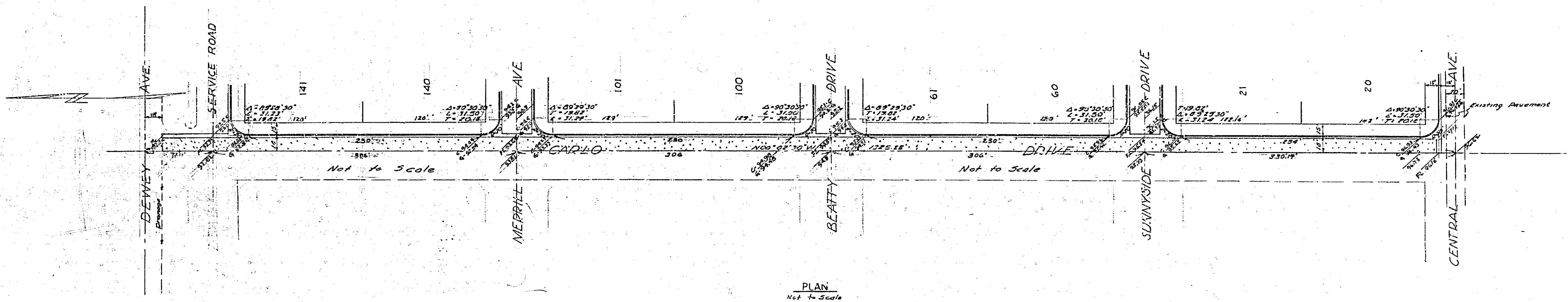
CITY OF RIVERSIDE  
ENGINEER'S DEPT.

PROPERTY OF  
CITY OF RIVERSIDE  
CITY ENGINEER'S DEPT.



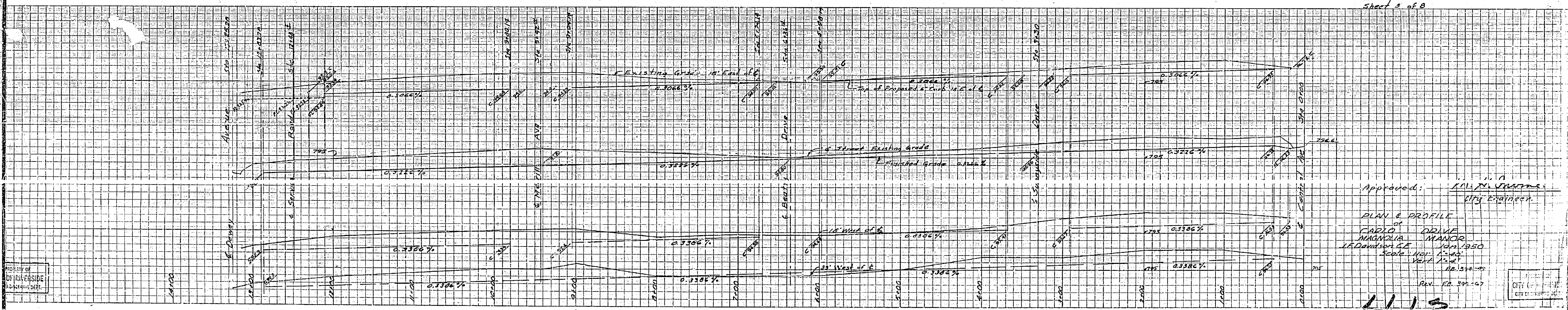
PROPERTY OF  
CITY OF RIVERSIDE  
ENGINEERING DEPT.

PROPERTY OF  
CITY OF RIVERSIDE  
CITY ENGINEERING DEPT.



PLAN  
Not to Scale

Sheet 3 of 8



Approved: *COL M. STANTON*  
City Engineer

PLAN & PROFILE  
OF  
CARLO DRIVE  
MARIANA MANOR  
J.F. Davidson & Co. JAN 1950  
Scale: Hor. 1"=40'  
Vert. 1"=4'  
E.E. 3394-25  
Rev. Feb. 29, 1957

413

PROPERTY OF  
CITY OF RIVERSIDE  
ENGINEERING DEPT.

PROPERTY OF  
CITY OF RIVERSIDE  
CITY ENGINEERING DEPT.

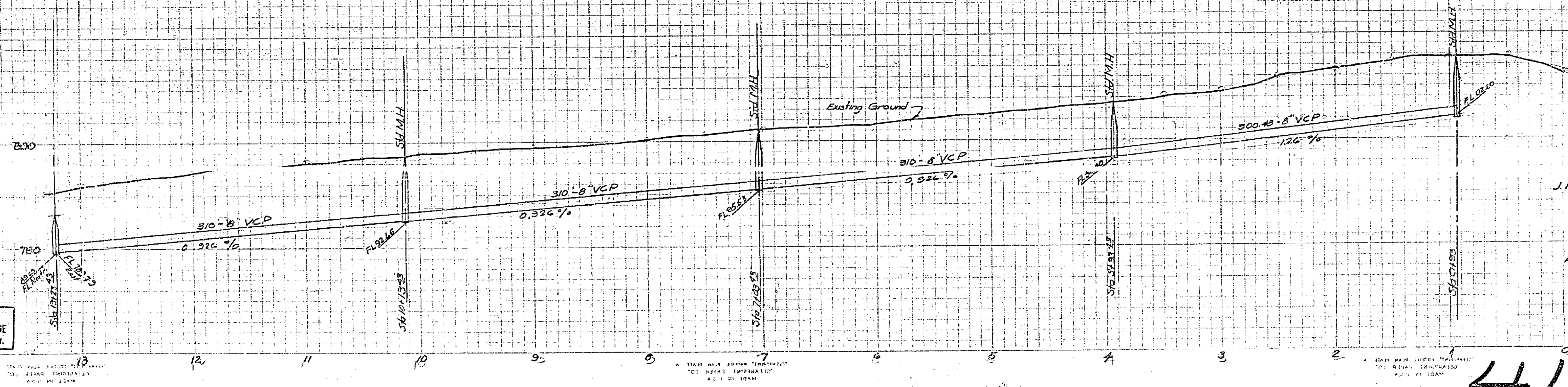
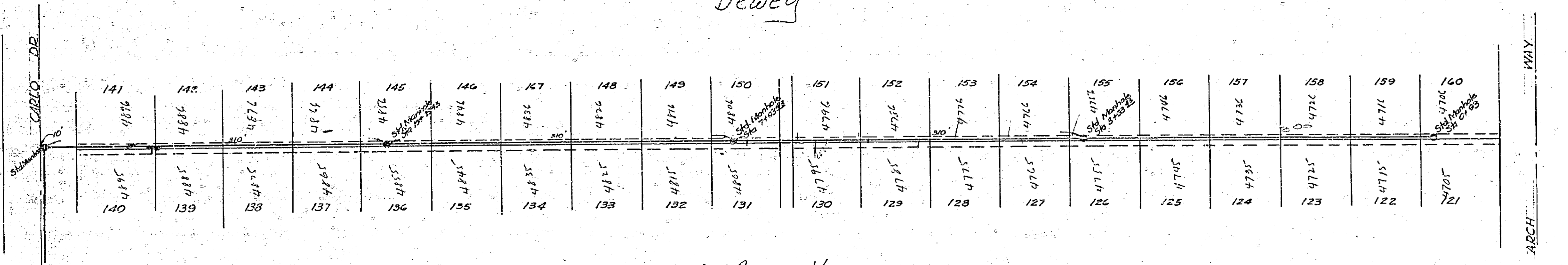


PROPERTY OF  
CITY OF RIVERSIDE  
CITY ENGINEERING DEPT.

PROPERTY OF  
CITY OF RIVERSIDE  
CITY ENGINEERING DEPT.

Dewey

Merrill



Approval M.K. Durkin  
City Engineer

Sewer Profiles  
for  
MAGNOLIA MANOR  
J.F. Davidson C.E. February 1952  
Scale: Hor. 1"=40'  
Vert. 1"=4'

Approved  
PROPERTY OF  
CITY OF RIVERSIDE  
CITY ENGINEERING DEPT.

PROPERTY OF  
CITY OF RIVERSIDE  
CITY ENGINEERING DEPT.

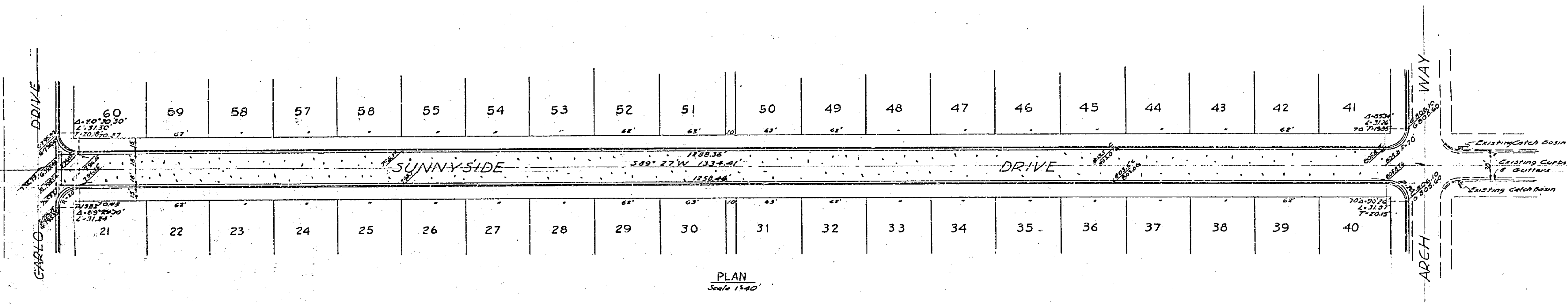
413

FB 420-79

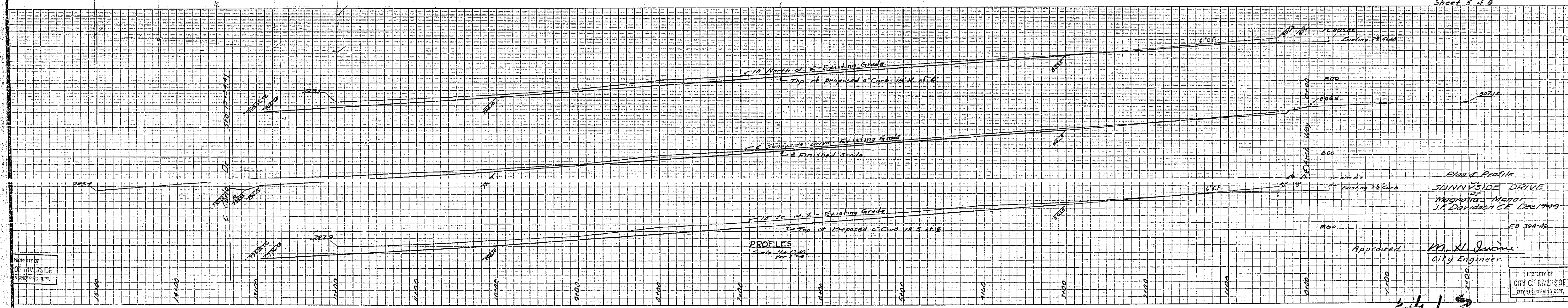


PROPERTY OF  
CITY OF RIVERSIDE  
ENGINEERING DEPT.

PROPERTY OF  
CITY OF RIVERSIDE  
ENGINEERING DEPT.



Sheet 5 of 8



413

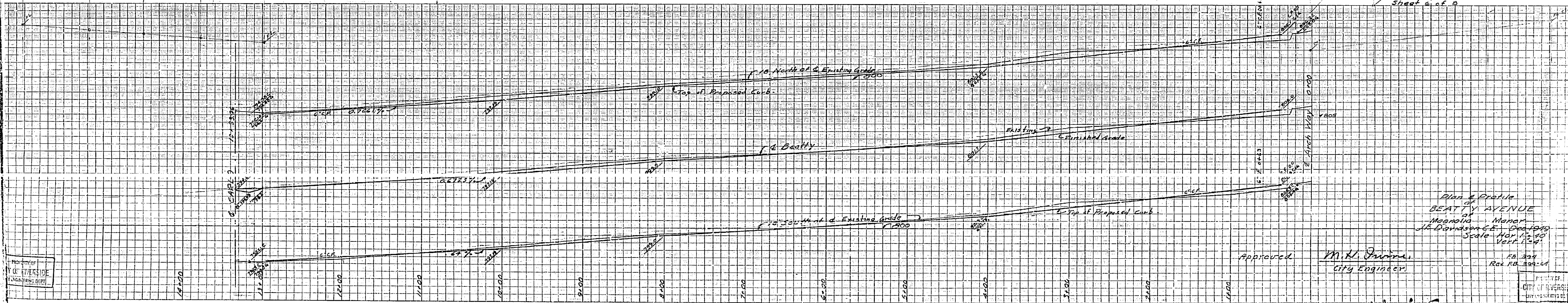
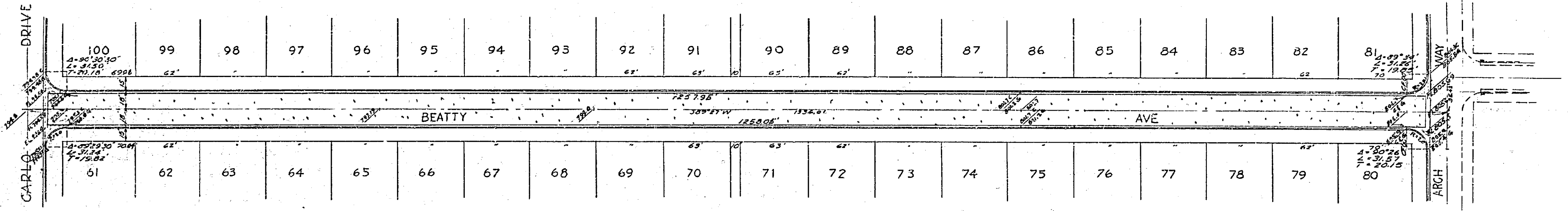
PROPERTY OF  
CITY OF RIVERSIDE  
ENGINEERING DEPT.

PROPERTY OF  
CITY OF RIVERSIDE  
ENGINEERING DEPT.



PROPERTY OF  
CITY OF RIVERSIDE  
CITY ENGINEERING DEPT.

PROPERTY OF  
CITY OF RIVERSIDE  
CITY ENGINEERING DEPT.



Plan & Profile  
of  
BEATTY AVENUE  
from  
Monrovia to Arch  
J.A. Davidson & E. Deed 1945  
Scale Hor. 1" = 40'  
Vert. 1" = 4'

Approved  
M.H. James  
City Engineer

EA 394  
Rev. EA 394-64

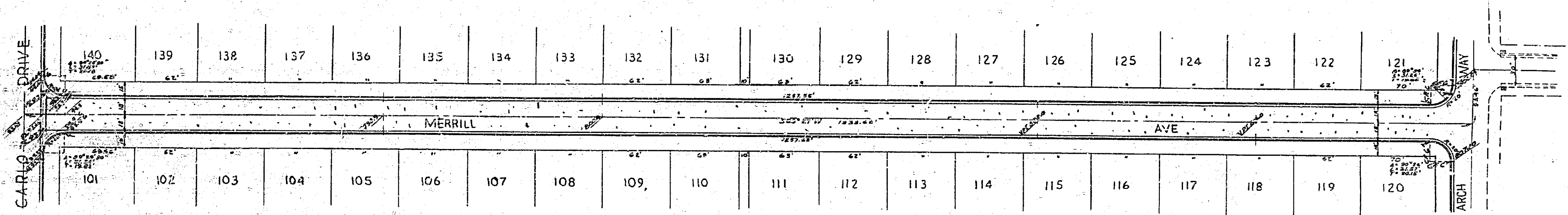
PROPERTY OF  
CITY OF RIVERSIDE  
CITY ENGINEERING DEPT.

413



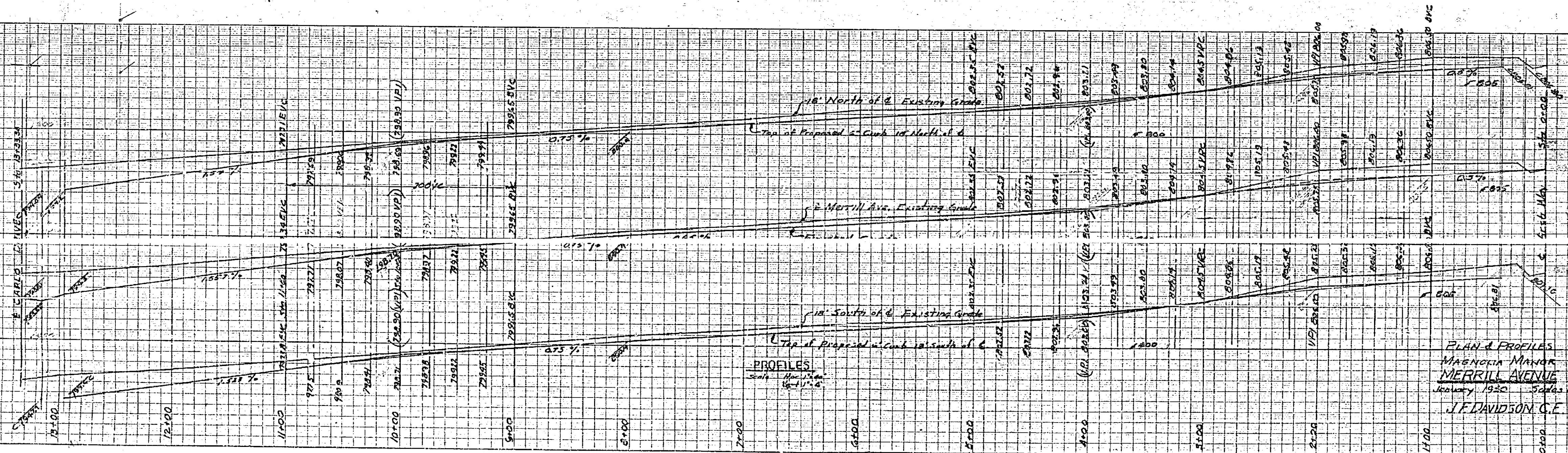
CITY OF MERCER  
1920

CITY OF MERCER  
1920



PLAN  
Scale 1"=40'

Sheet 7 of 8



PLAN & PROFILES  
 Approved *M. H. Swann*  
 City Engineer  
 J.F. DAVIDSON, C.E.  
 January 1920  
 Scale as shown

"CLEARPRINT" PROFILE PLAN PLATE A  
"CLEARPRINT" PAPER CO.  
MADE IN U.S.A.

"CLEARPRINT" PROFILE PLAN PLATE A  
"CLEARPRINT" PAPER CO.  
MADE IN U.S.A.

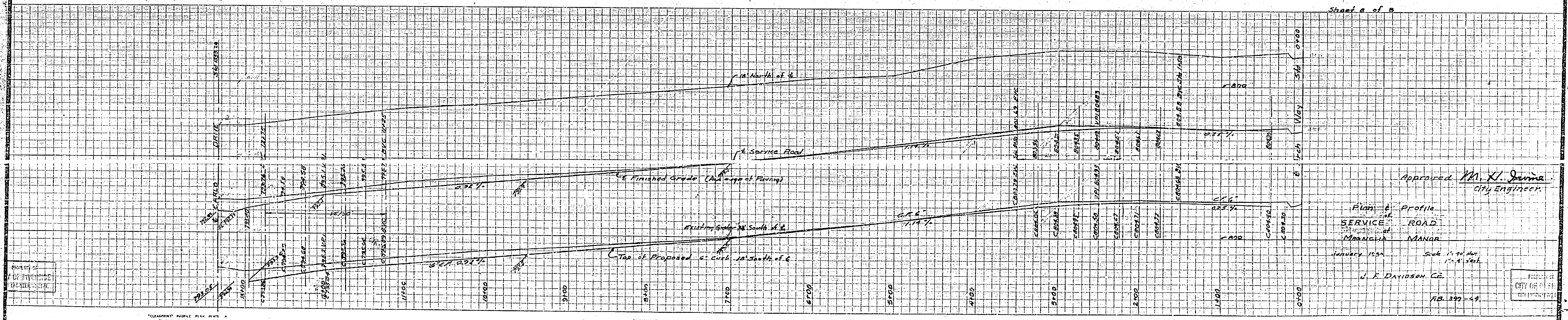
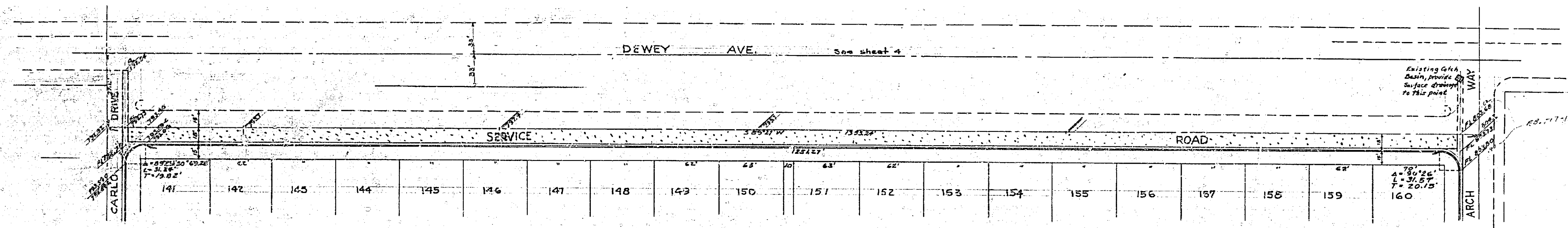
"CLEARPRINT" PROFILE PLAN PLATE A  
"CLEARPRINT" PAPER CO.  
MADE IN U.S.A.

413



CITY OF RIVERSIDE  
ENGINEERING DEPT.

CITY OF RIVERSIDE  
ENGINEERING DEPT.



"CLEARPRINT" PROFILE PLAN PLATE A  
"CLEARPRINT" PAPER CO.  
MADE IN U.S.A.

"CLEARPRINT" PROFILE PLAN PLATE A  
"CLEARPRINT" PAPER CO.  
MADE IN U.S.A.

"CLEARPRINT" PROFILE PLAN PLATE A  
"CLEARPRINT" PAPER CO.  
MADE IN U.S.A.

413