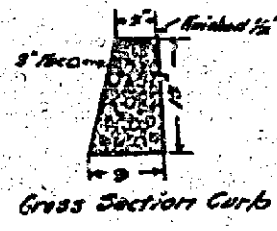
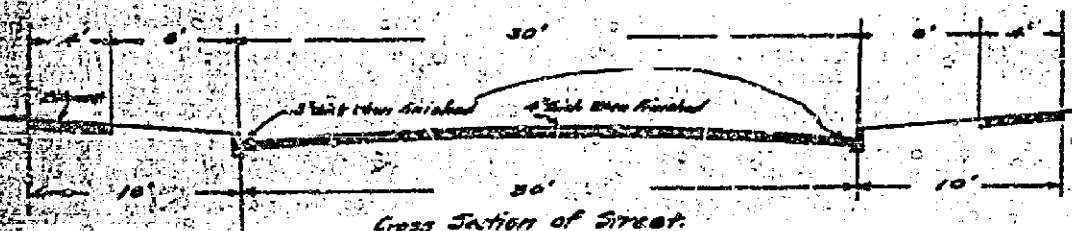
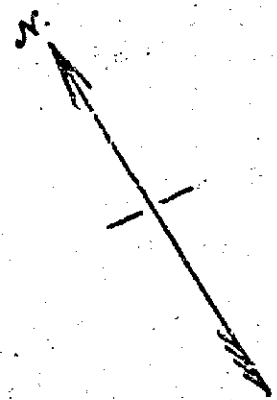
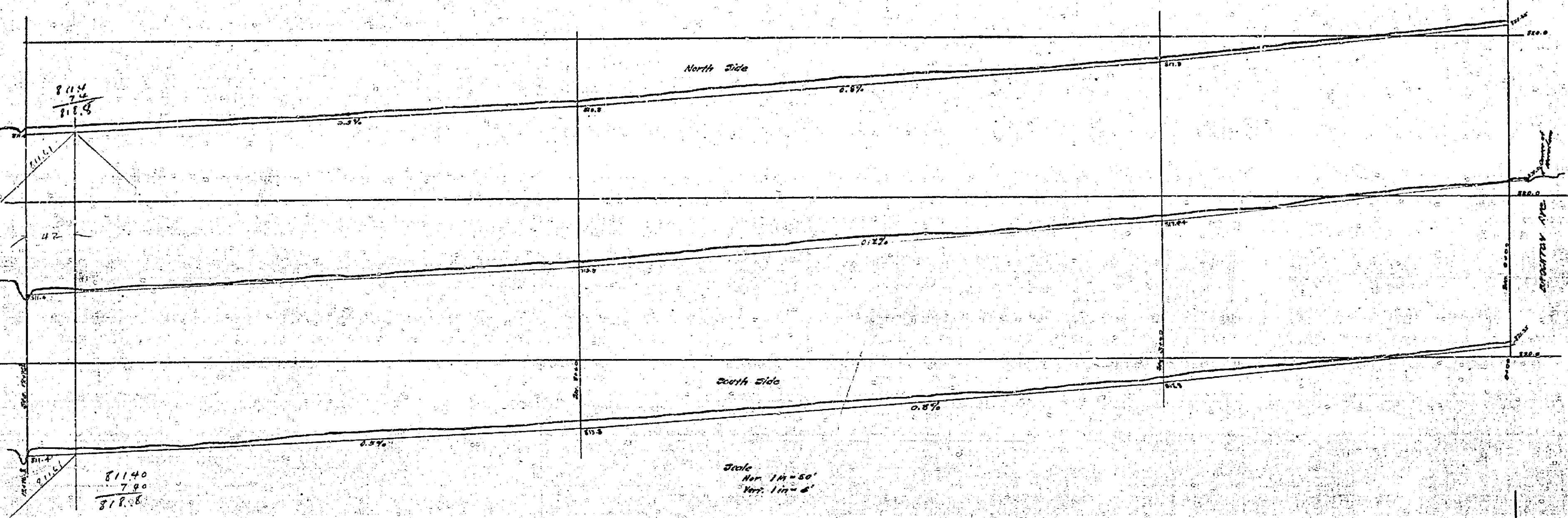


MAP
Showing Street Improvements
To Be Made On Highland Place in Summer Park,
May, 1910



Depressments on edge of curb
--- Concrete sidewalk according to Specifications 21
--- Curb according to Specifications 22
--- Depressed curbs and side road specifications p. 18



25	24	23	22	21	20	19	18	17	16	15	14	13	12	11	10	9	8	7	6	5	4	3	2	1
26	27	28	29	30	31	32	33	34	35	36	37	38	39	40	41	42	43	44	45	46	47	48	49	50

Adopted by the Mayor and Common Council
of the City of Riverside
1910
Attest
City Clerk

Scale 1 inch = 60 feet

416