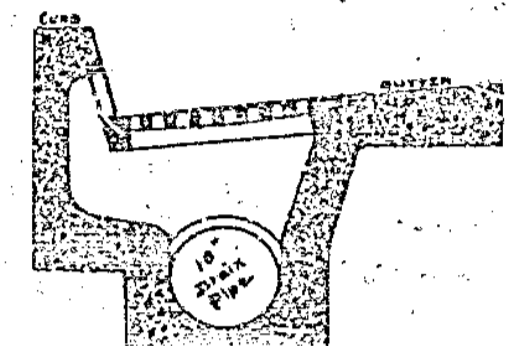
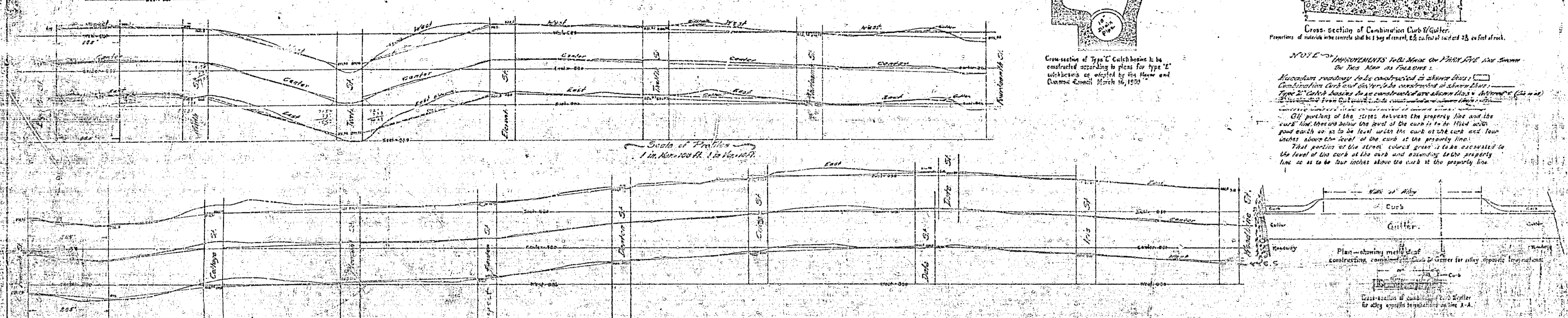
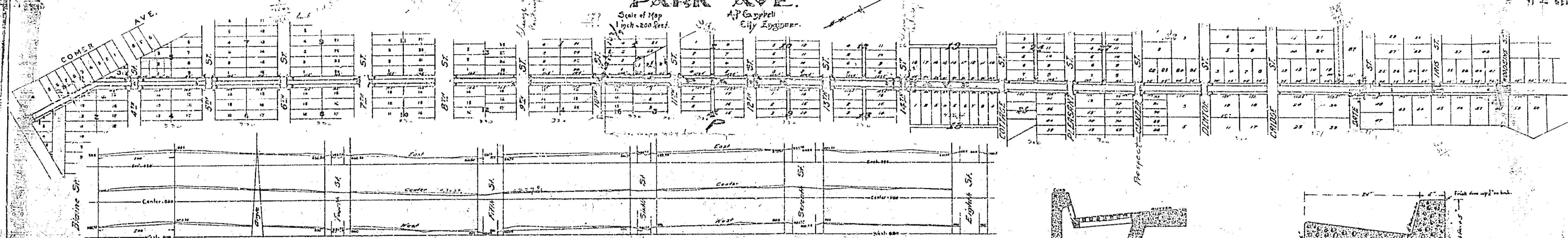


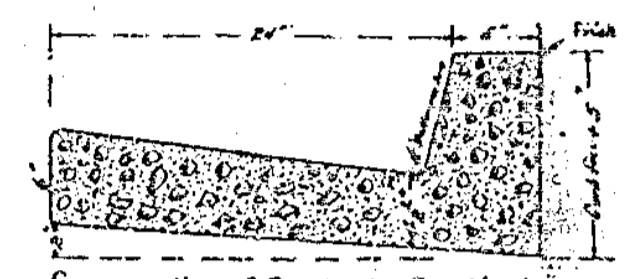
MAP SHOWING IMPROVEMENTS TO BE MADE ON
PARK AVE.

Scale of Map
1 inch = 200 feet.

A. J. Campbell
City Engineer.



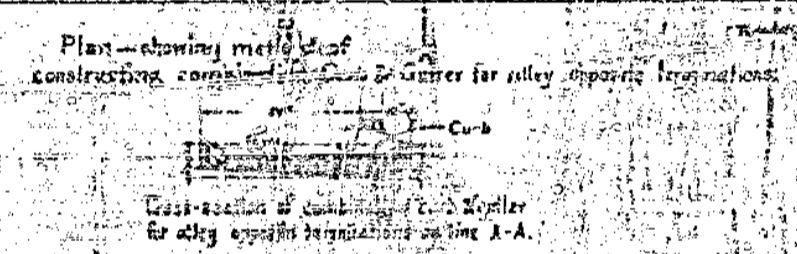
Cross-section of Type "C" Catch basin to be constructed according to plans for Type "L" catch basins as adopted by the Board and Common Council March 13, 1910.



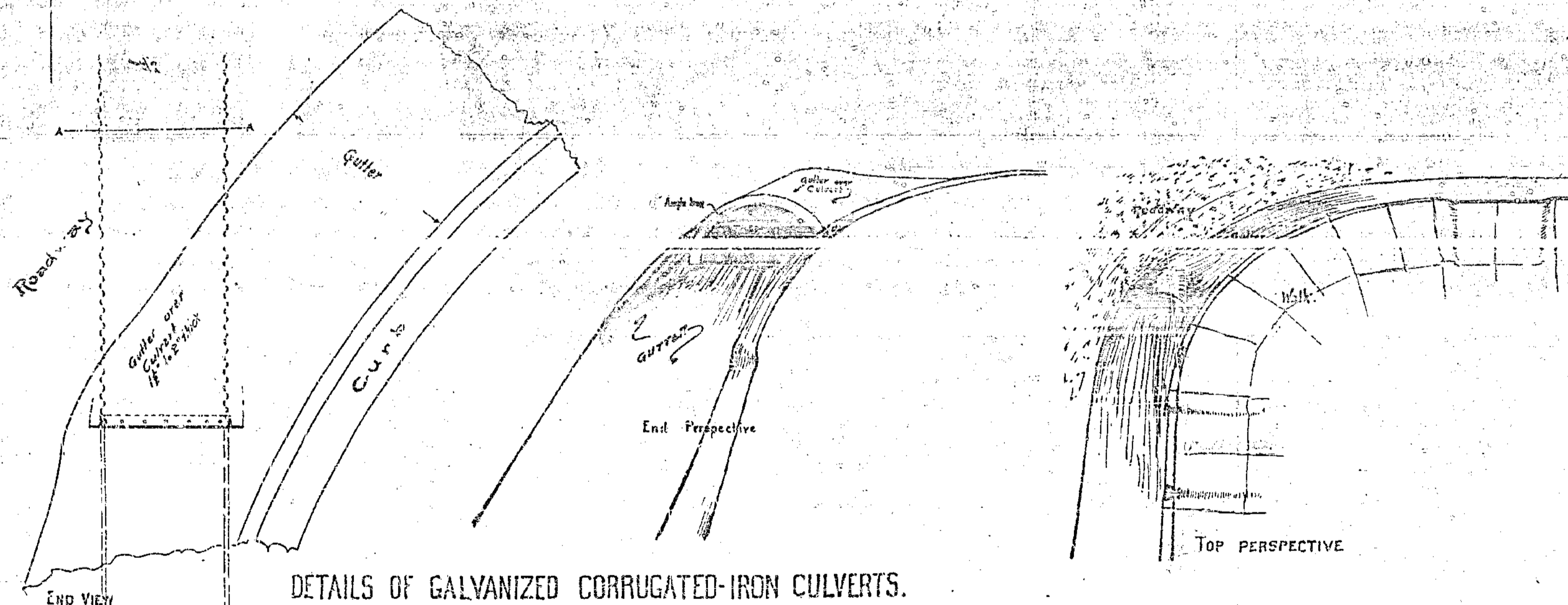
Cross-section of Combination Curb & Gutter. Proportions of material in concrete shall be 1 bag of cement, 2 1/2 cubic feet of sand and 2 1/2 cubic feet of crushed rock.

NOTE - IMPROVEMENTS TO BE MADE ON PARK AVE AND SUMMIT ST. SEE MAP FOR DETAILS.

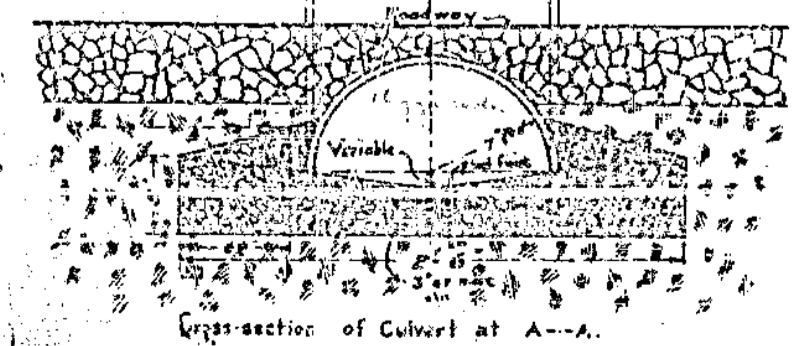
Proposed roadway to be constructed as shown on this map. Construction shall conform to the requirements of the Board and Common Council. All portions of the street between the property line and the curb line between the curb and the gutter shall be filled with good earth so as to be level with the curb at the curb and four inches above the level of the curb at the property line. That portion of the street, colored green on this map, shall be to the level of the curb at the curb and extending to the property line so as to be four inches above the curb at the property line.



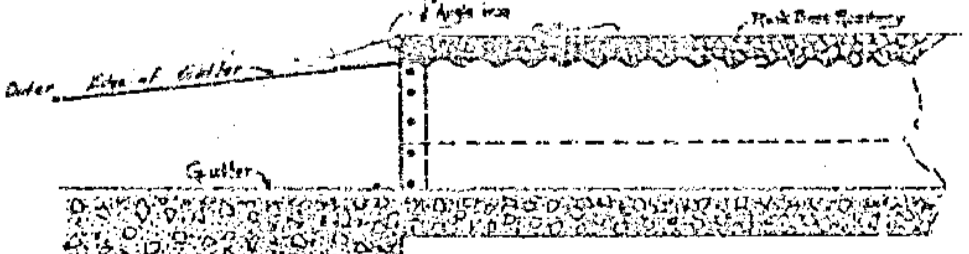
Adopted by the Mayor and Common Council of the City of Riverside Cal. December 1910.
Attest: *[Signature]*
City Clerk.



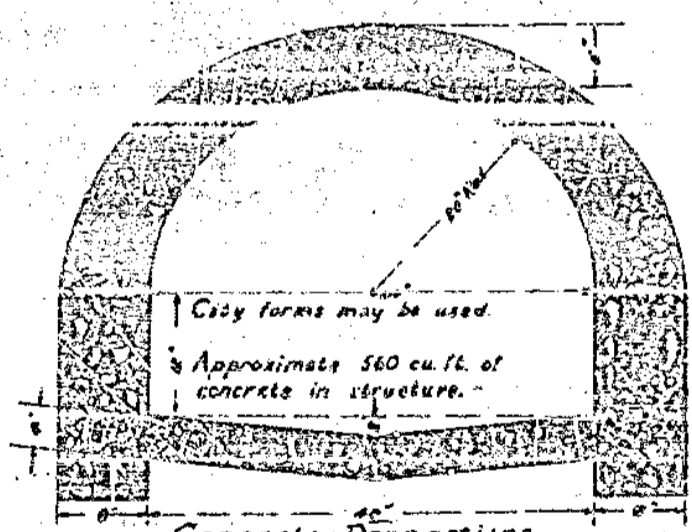
DETAILS OF GALVANIZED CORRUGATED-IRON CULVERTS.



Cross-section of Culvert at A-A.



Longitudinal section thru center.



Cast forms may be used. Approximate 500 cu. ft. of concrete in structure.

Concrete Proportions:
1 bag Cement,
3 cubic feet Sand,
5 cubic feet Rock.

417