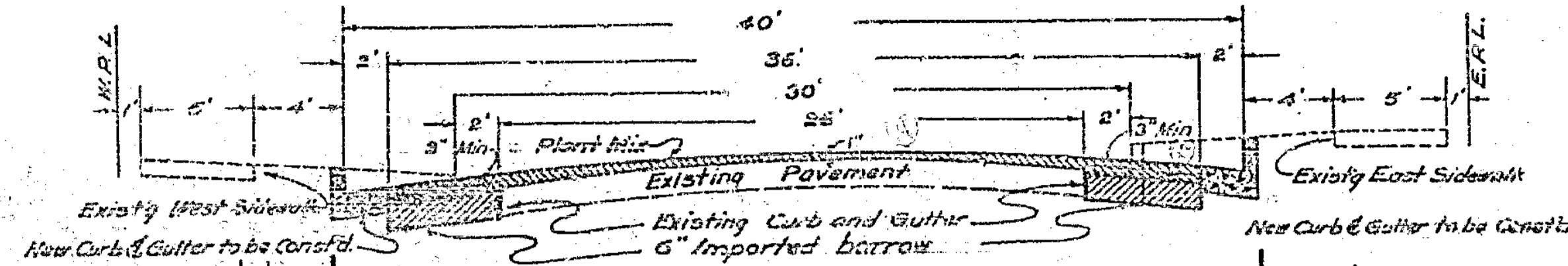


PLANS AND PROFILES
NO 417 A
FOR THE PROPOSED IMPROVEMENT OF
PARK AVENUE
BETWEEN FOURTEENTH ST. & SEVENTH ST.
RIVERSIDE, CALIFORNIA

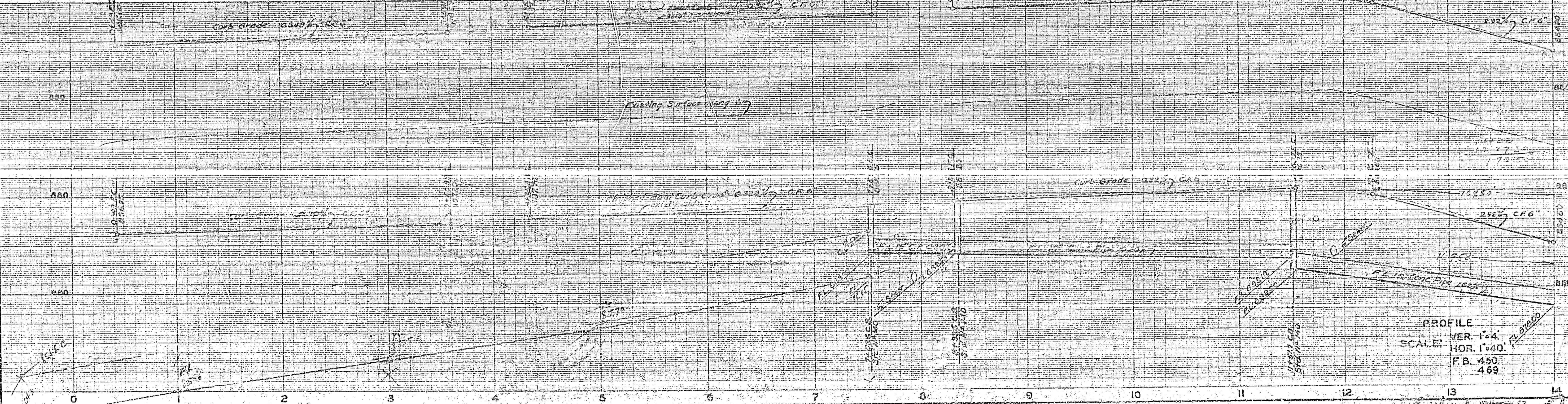
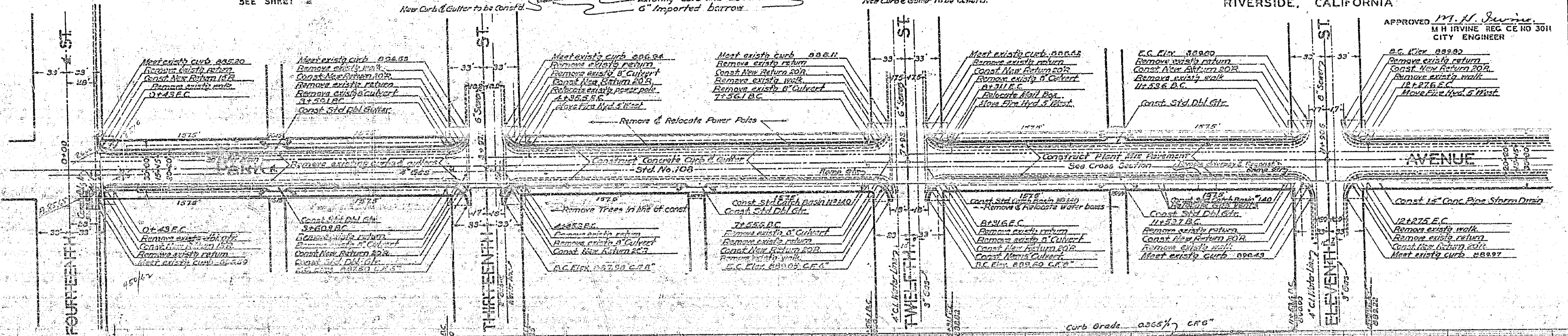
TYPICAL CROSS SECTION
BETWEEN 14TH ST. AND 9TH ST.

SCALE: 1"=40'

LEGEND
SEE SHEET 2

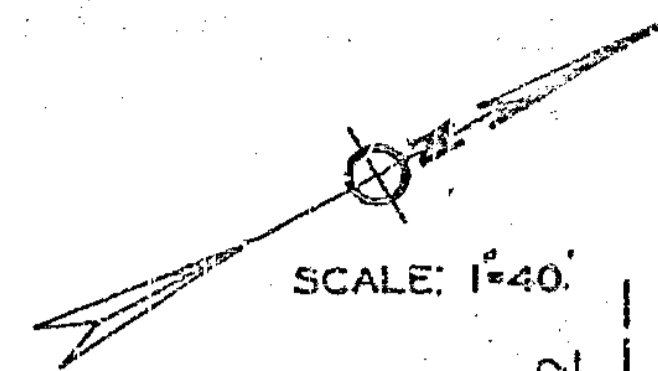


APPROVED *M. H. Irvine*
M. H. IRVINE REG. CE NO 3011
CITY ENGINEER

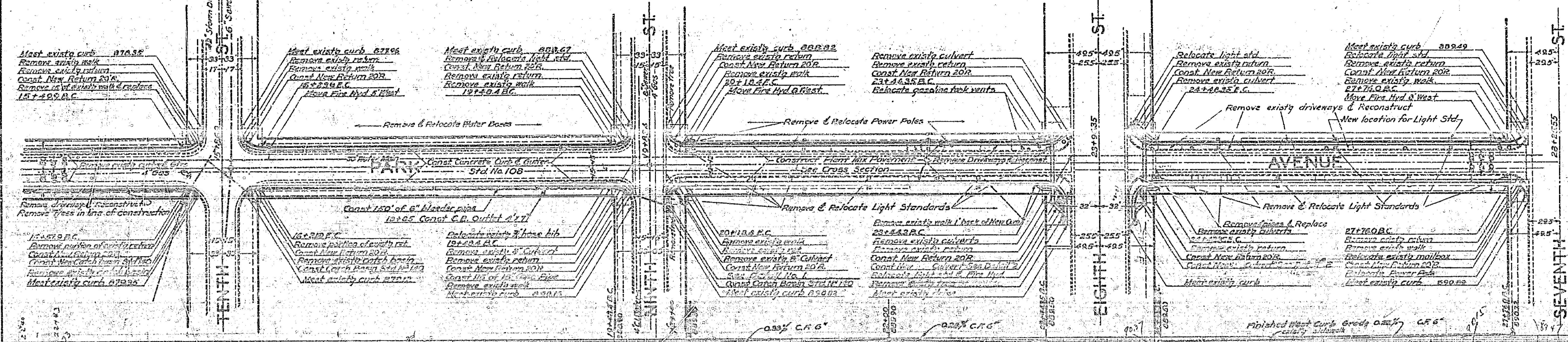
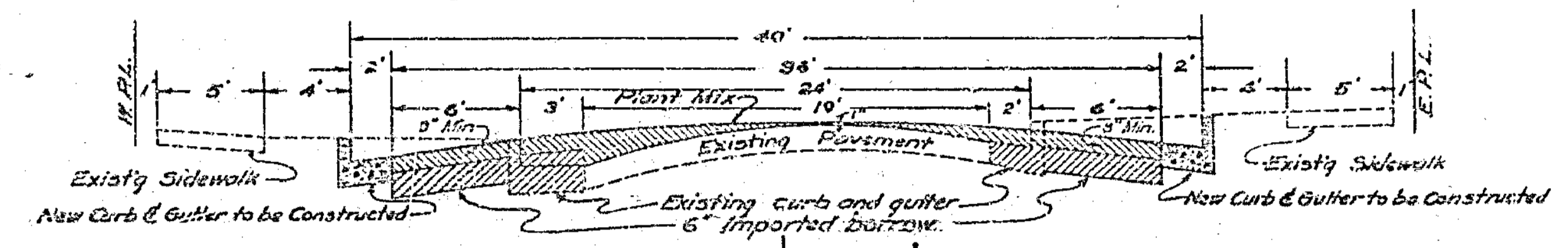


PROFILE
VER. 1"=4'
SCALE: HOR. 1"=40'
F.B. 450
469

TYPICAL CROSS SECTION
BETWEEN 9TH ST. AND 7TH ST.

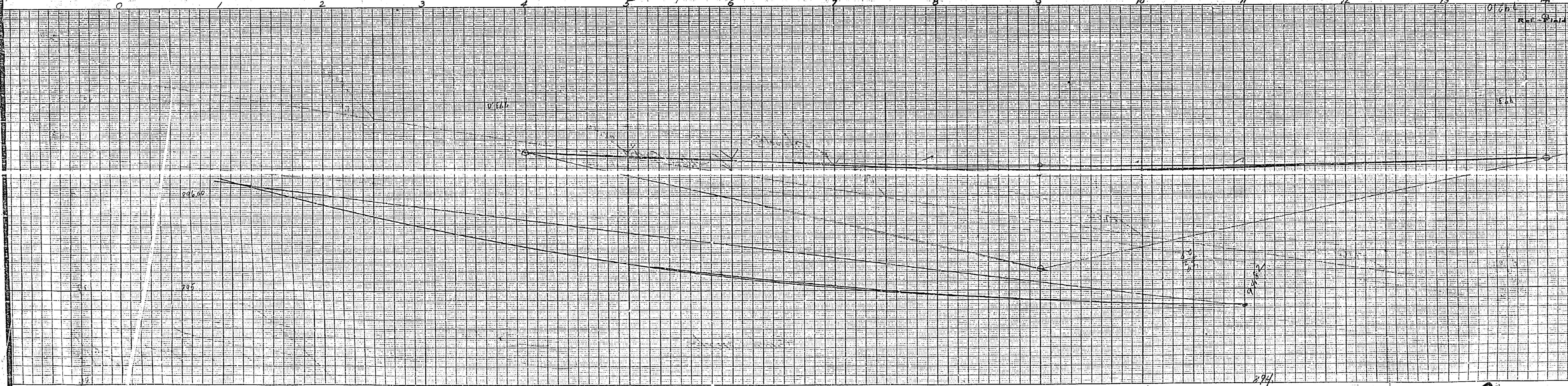
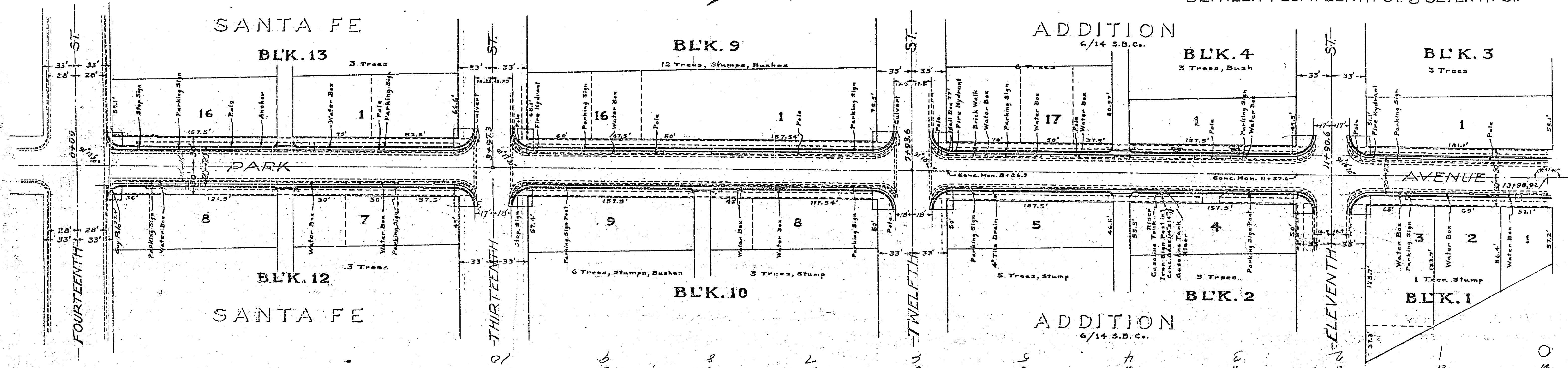
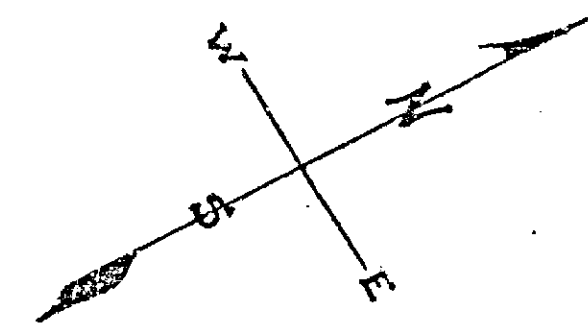


- LEGEND**
- Fire Hydrant
 - Light Standard
 - Sewer Manhole Cover
 - Power Pole
 - New location for light Std.
 - New location for Fire Hydrant



4174

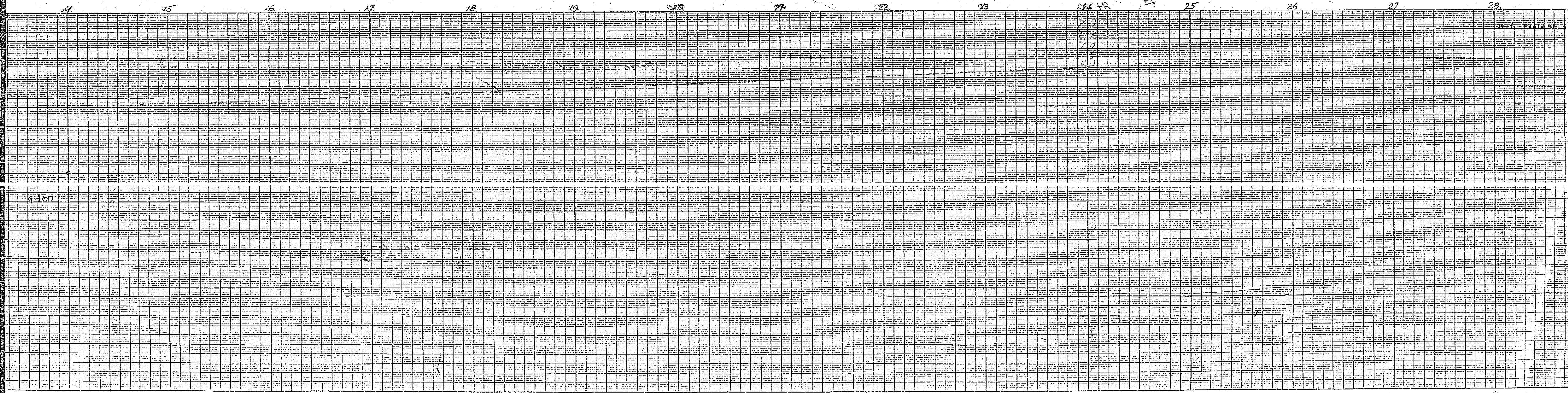
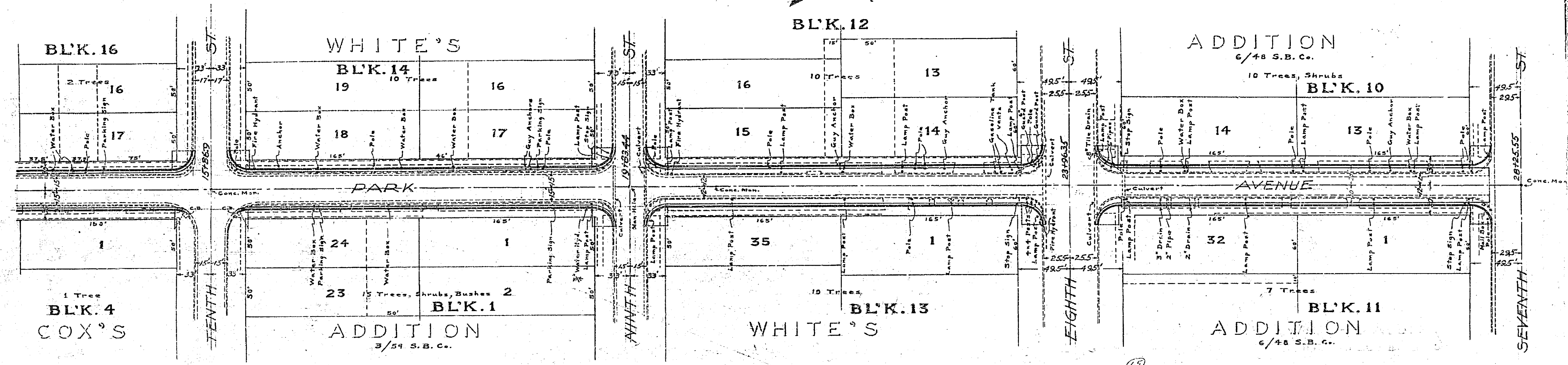
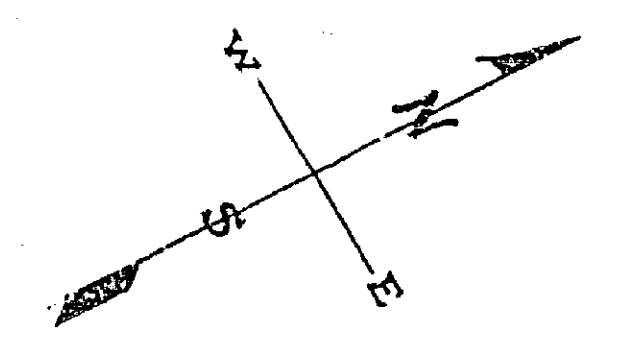
PLANS AND PROFILES SHEET 1 OF 2
 NO 417 A
 FOR THE PROPOSED IMPROVEMENT OF
PARK AVENUE
 BETWEEN FOURTEENTH ST. & SEVENTH ST.



80
 CLEARPRINT PROFILE PLUM PLATE A
 CLEARPRINT PAPER CO.
 MADE IN U.S.A.

80
 CLEARPRINT PROFILE PLUM PLATE A
 CLEARPRINT PAPER CO.
 MADE IN U.S.A.

417A



1770. 90. 92. 94. 96. 98. 100. 102. 104. 106. 108. 110. 112. 114. 116. 118. 120. 122. 124. 126. 128. 130. 132. 134. 136. 138. 140. 142. 144. 146. 148. 150. 152. 154. 156. 158. 160. 162. 164. 166. 168. 170. 172. 174. 176. 178. 180. 182. 184. 186. 188. 190. 192. 194. 196. 198. 200. 202. 204. 206. 208. 210. 212. 214. 216. 218. 220. 222. 224. 226. 228. 230. 232. 234. 236. 238. 240. 242. 244. 246. 248. 250. 252. 254. 256. 258. 260. 262. 264. 266. 268. 270. 272. 274. 276. 278. 280. 282. 284. 286. 288. 290. 292. 294. 296. 298. 300. 302. 304. 306. 308. 310. 312. 314. 316. 318. 320. 322. 324. 326. 328. 330. 332. 334. 336. 338. 340. 342. 344. 346. 348. 350. 352. 354. 356. 358. 360. 362. 364. 366. 368. 370. 372. 374. 376. 378. 380. 382. 384. 386. 388. 390. 392. 394. 396. 398. 400. 402. 404. 406. 408. 410. 412. 414. 416. 418. 420. 422. 424. 426. 428. 430. 432. 434. 436. 438. 440. 442. 444. 446. 448. 450. 452. 454. 456. 458. 460. 462. 464. 466. 468. 470. 472. 474. 476. 478. 480. 482. 484. 486. 488. 490. 492. 494. 496. 498. 500. 502. 504. 506. 508. 510. 512. 514. 516. 518. 520. 522. 524. 526. 528. 530. 532. 534. 536. 538. 540. 542. 544. 546. 548. 550. 552. 554. 556. 558. 560. 562. 564. 566. 568. 570. 572. 574. 576. 578. 580. 582. 584. 586. 588. 590. 592. 594. 596. 598. 600. 602. 604. 606. 608. 610. 612. 614. 616. 618. 620. 622. 624. 626. 628. 630. 632. 634. 636. 638. 640. 642. 644. 646. 648. 650. 652. 654. 656. 658. 660. 662. 664. 666. 668. 670. 672. 674. 676. 678. 680. 682. 684. 686. 688. 690. 692. 694. 696. 698. 700. 702. 704. 706. 708. 710. 712. 714. 716. 718. 720. 722. 724. 726. 728. 730. 732. 734. 736. 738. 740. 742. 744. 746. 748. 750. 752. 754. 756. 758. 760. 762. 764. 766. 768. 770. 772. 774. 776. 778. 780. 782. 784. 786. 788. 790. 792. 794. 796. 798. 800. 802. 804. 806. 808. 810. 812. 814. 816. 818. 820. 822. 824. 826. 828. 830. 832. 834. 836. 838. 840. 842. 844. 846. 848. 850. 852. 854. 856. 858. 860. 862. 864. 866. 868. 870. 872. 874. 876. 878. 880. 882. 884. 886. 888. 890. 892. 894. 896. 898. 900. 902. 904. 906. 908. 910. 912. 914. 916. 918. 920. 922. 924. 926. 928. 930. 932. 934. 936. 938. 940. 942. 944. 946. 948. 950. 952. 954. 956. 958. 960. 962. 964. 966. 968. 970. 972. 974. 976. 978. 980. 982. 984. 986. 988. 990. 992. 994. 996. 998. 1000.

417A

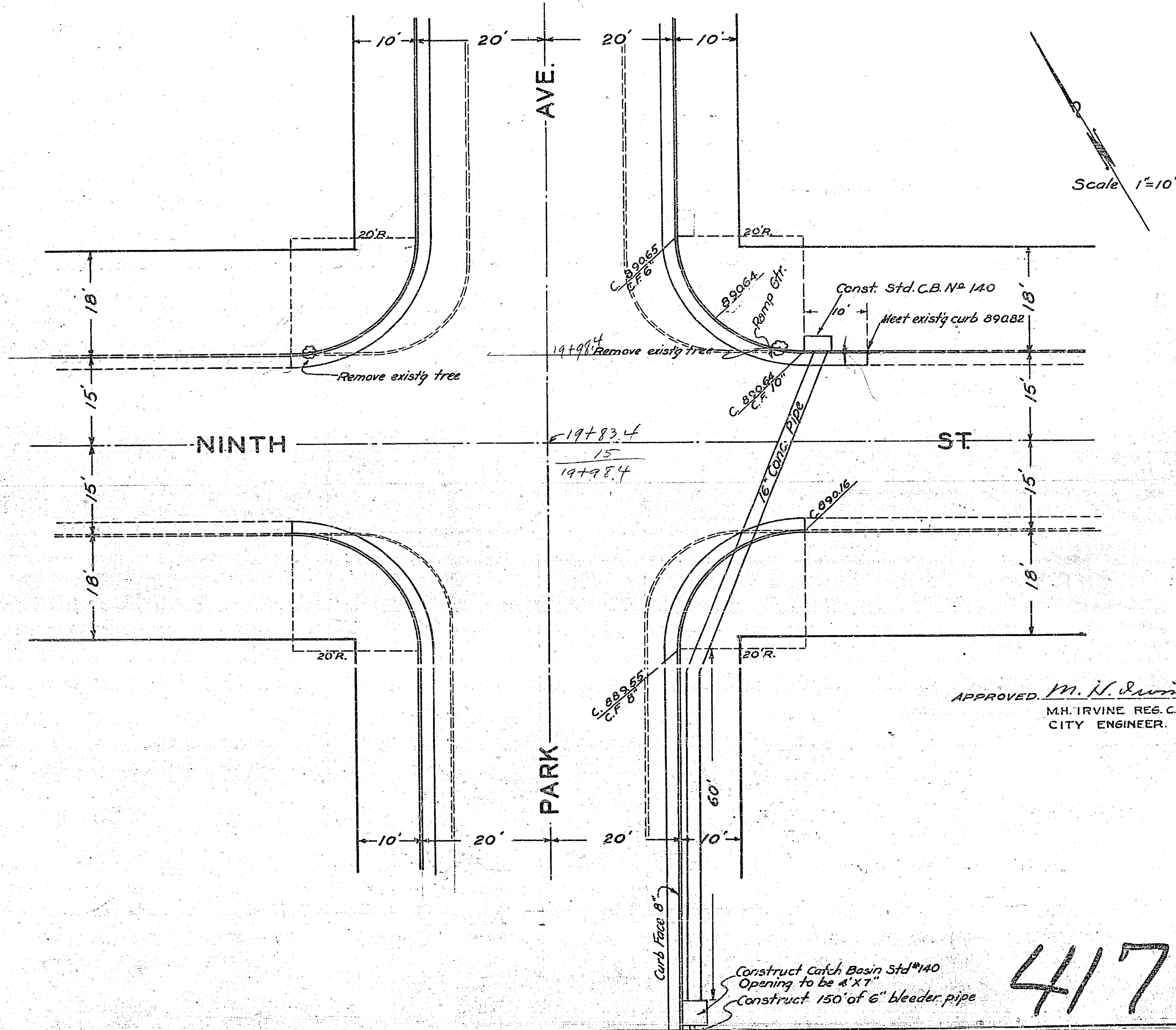
"CLEARPRINT" PROFILE PLAN PLATE A
"CLEARPRINT" PAPER CO.
MADE IN U.S.A.

"CLEARPRINT" PROFILE PLAN PLATE A
"CLEARPRINT" PAPER CO.
MADE IN U.S.A.

"CLEARPRINT" PROFILE PLAN PLATE A
"CLEARPRINT" PAPER CO.
MADE IN U.S.A.

DETAILS OF INTERSECTION OF PARK AVENUE AND NINTH STREET

DETAIL N^o 1

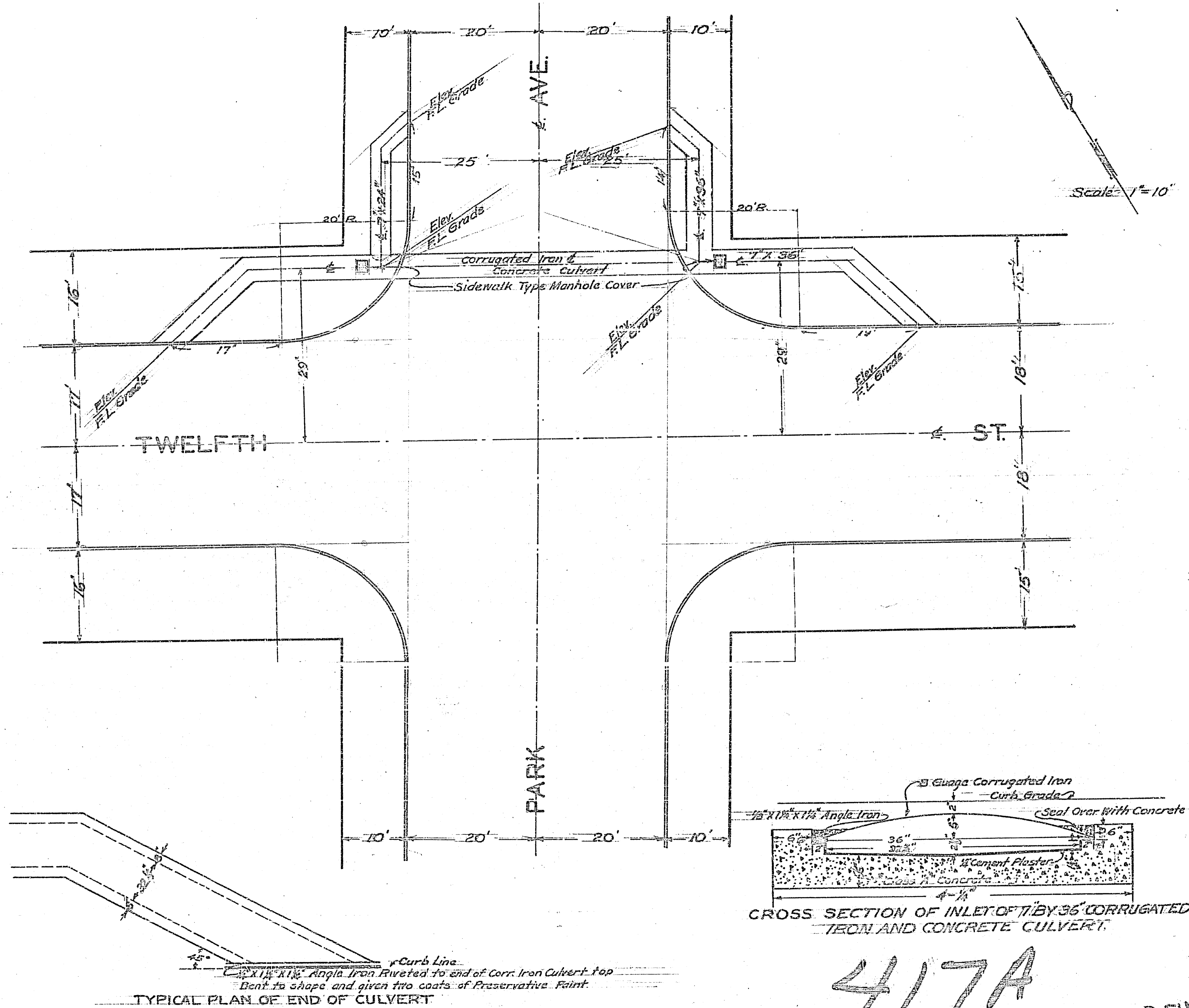


APPROVED *M. H. Irvine*
M.H. IRVINE REG. C.E. N^o 3011
CITY ENGINEER.

Construct Catch Basin Std #140
Opening to be 4'x7'
Construct 150' of 6" bleeder pipe

417A

DETAILS OF INTERSECTION OF PARK AVENUE AND TWELFTH STREET

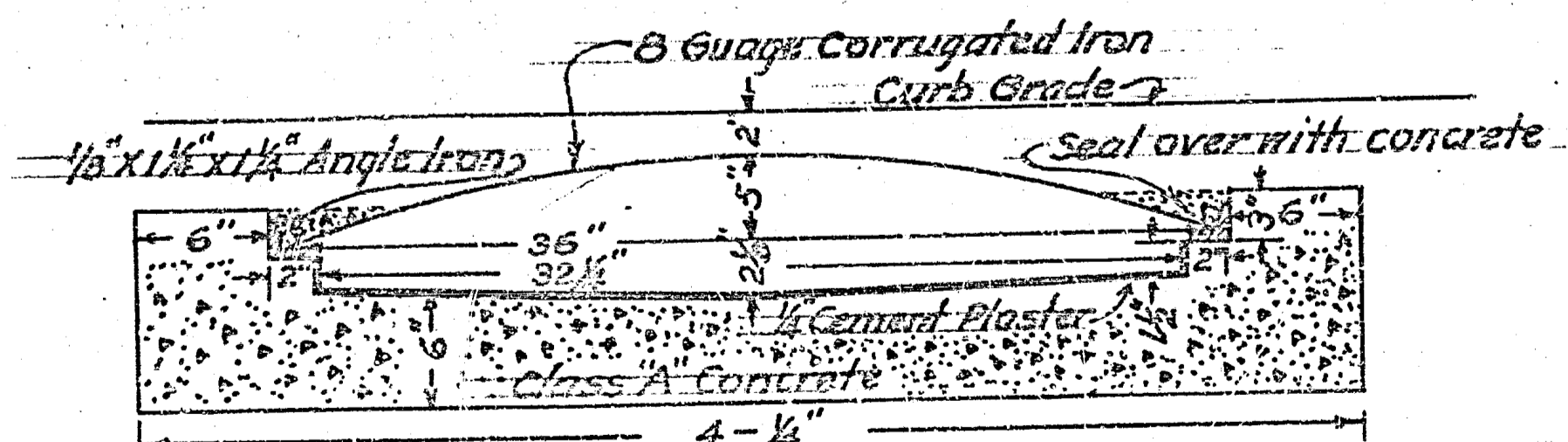
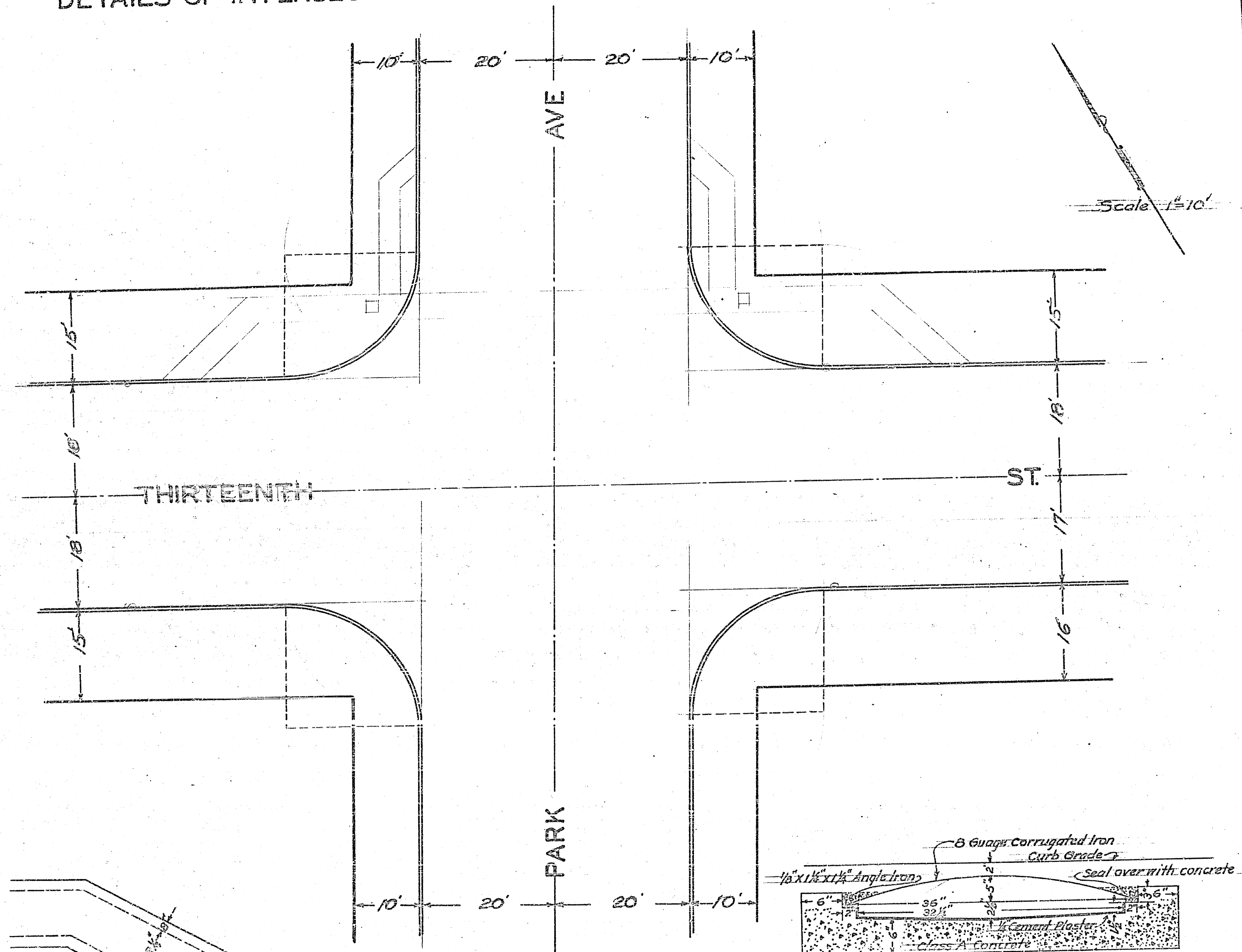


417A

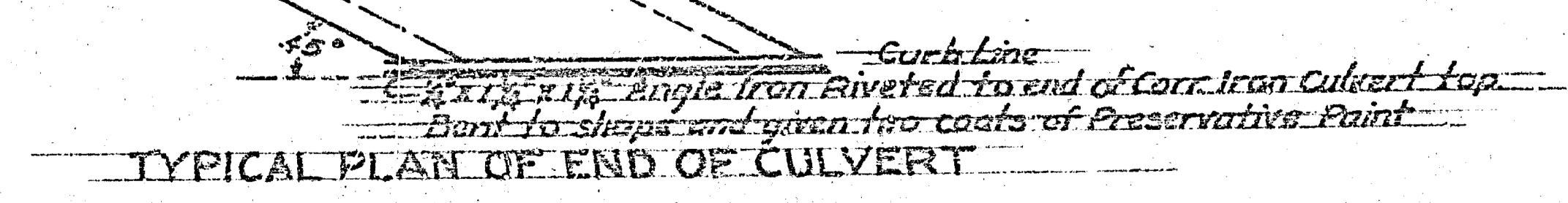
ATM

417A

DETAILS OF INTERSECTION OF PARK AVENUE AND THIRTEENTH STREET



CROSS SECTION OF INLET OF 7 BY 36 CORRUGATED IRON AND CONCRETE CULVERT.



TYPICAL PLAN OF END OF CULVERT

417 A
AFIA