

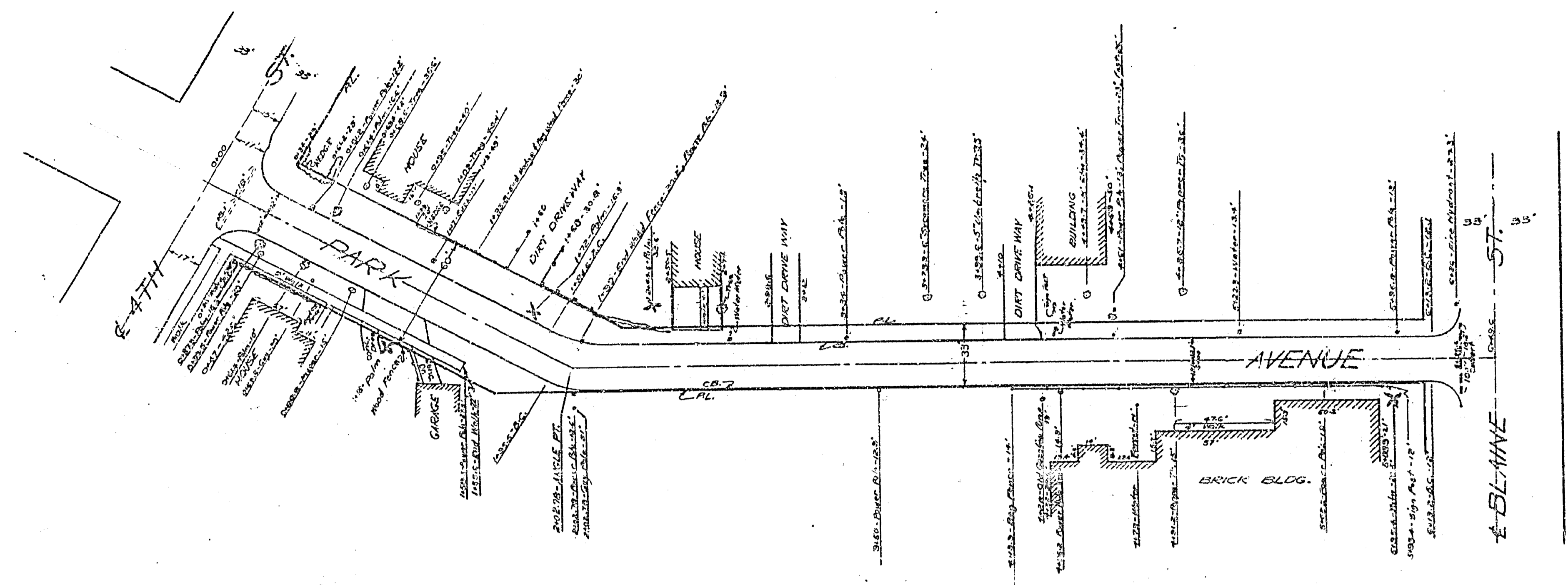
PLAN AND PROFILE
 NO. 417-B
 FOR THE PROPOSED WIDENING OF CURBS ON

PARK AVENUE
 BETWEEN 4TH ST. AND BLAINE ST.
 RIVERSIDE, CALIFORNIA

SCALES: HORIZ. 1" = 40'
 VERT. 1" = 4'

APPROVED: M.H. IRVINE, REG. C.E. NO. 3011
 CITY ENGINEER

M.B. 512/44



0 1 2 3 4 5 6 7

417B

MADE IN U.S.A.