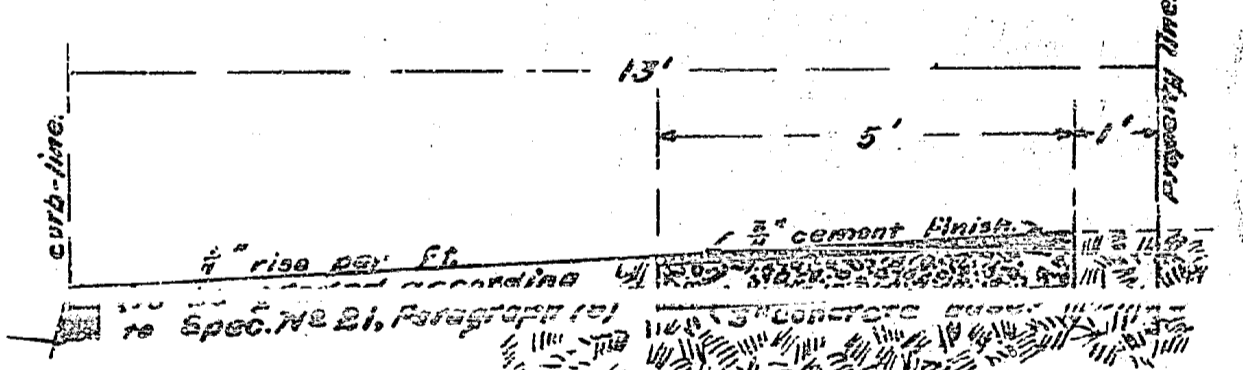
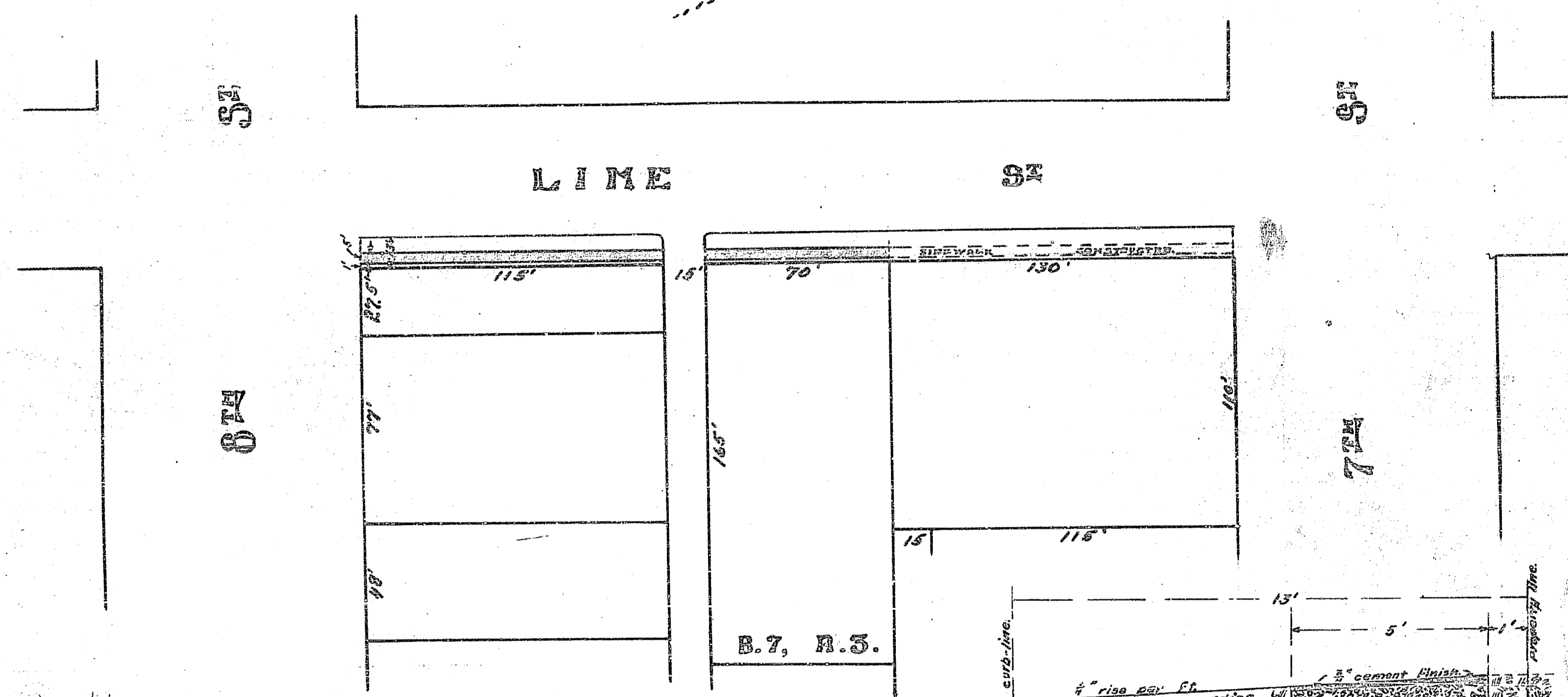


MAP SHOWING SIDEWALK TO BE CONSTRUCTED ON LIME STREET.
EAST SIDE, BETWEEN 7TH & 8TH STREETS.

SCALE; 1" = 60'

R.P. Campbell.
City Engineer.



CROSS-SECTION SHOWING CONSTRUCTION OF CEMENT SIDEWALK
ACCORDING TO SPECIFICATIONS No 21.

Adopted by the Mayor and Common
Council of the City of Riverside this
12th day of June, 1911.

Sidewalk to be constructed is shown thus;
according to Specifications No 21.

R.P. Campbell
City Engineer

419A