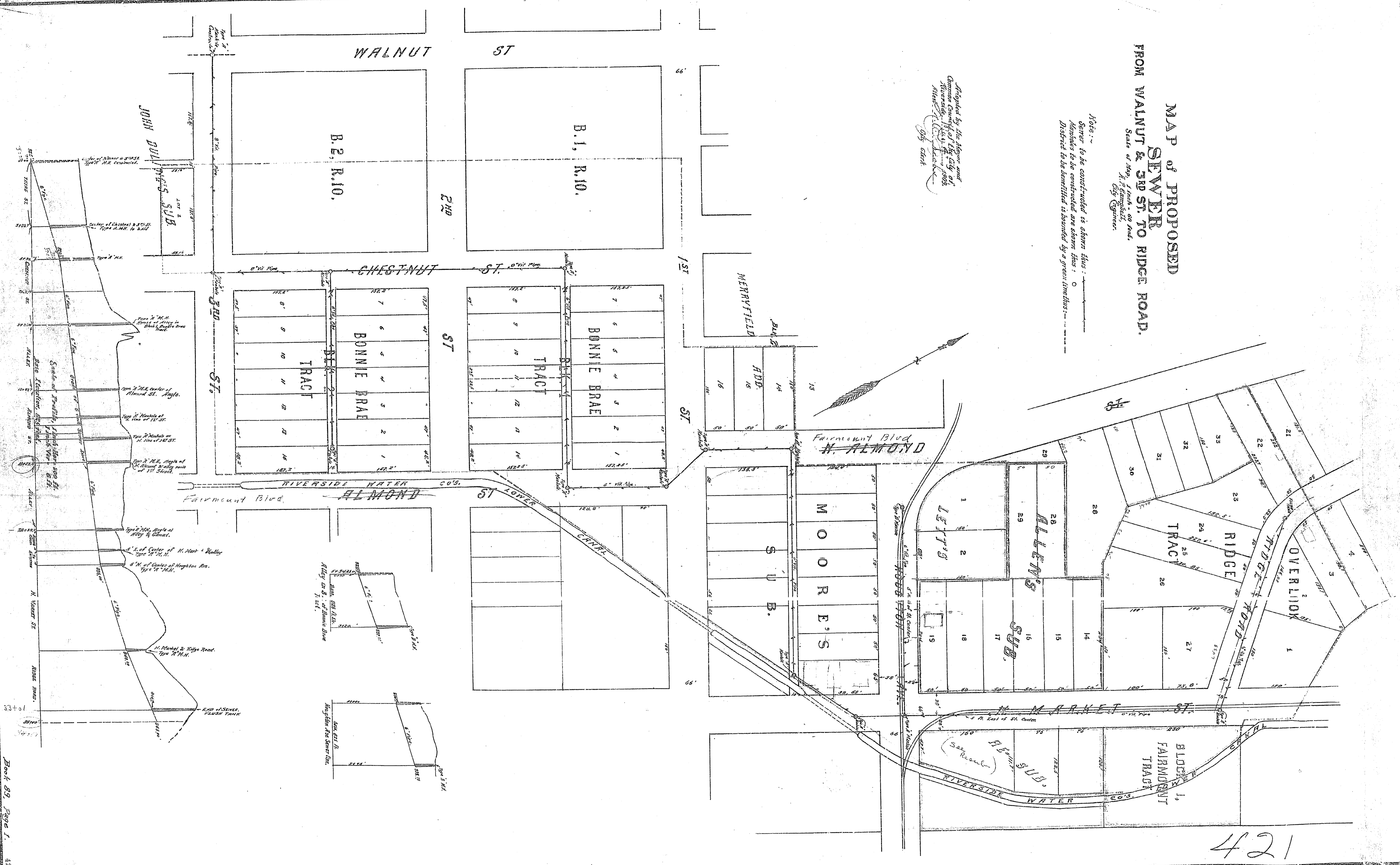


**MAP of PROPOSED
SEWER
FROM WALNUT & 3RD ST. TO RIDGE ROAD.**

Scale of Map, 1 inch = 50 feet.
H. P. Campbell,
City Engineer.

Note: -
Sewer to be constructed is shown thus: ————
Manholes to be constructed are shown thus: ○
District to be benefited is bounded by a green line thus: ————

Approved by the Mayor and
Common Council of the City of
Riverside, March 27, 1906.
H. P. Campbell,
City Clerk.



421