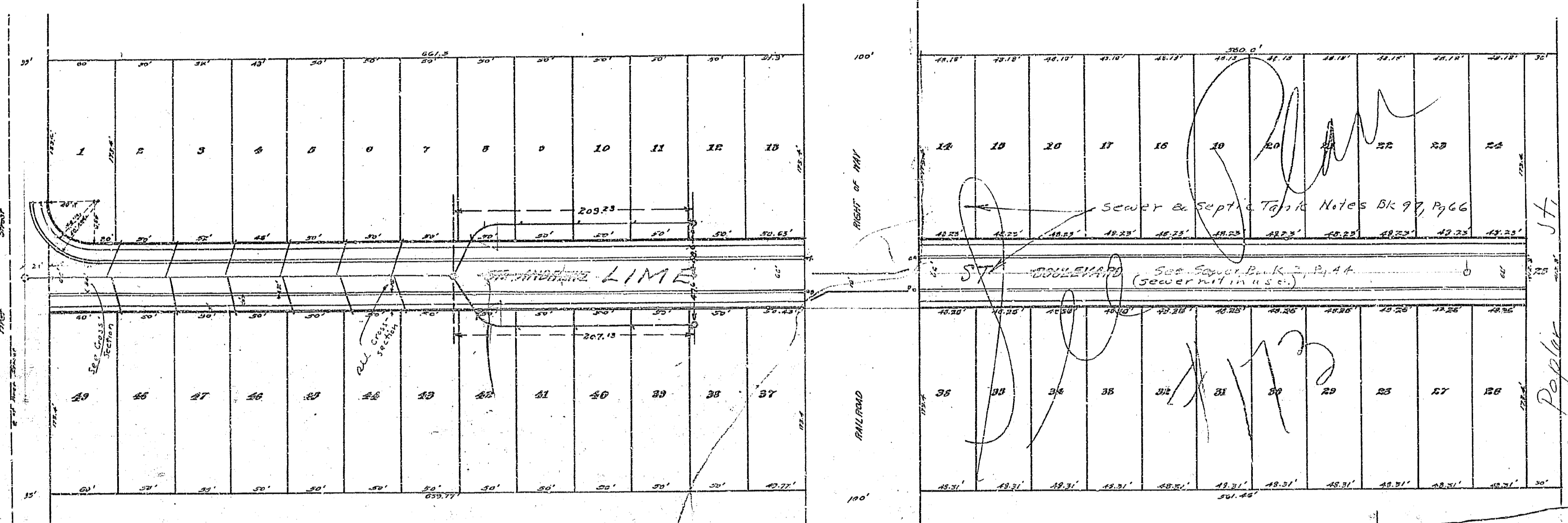
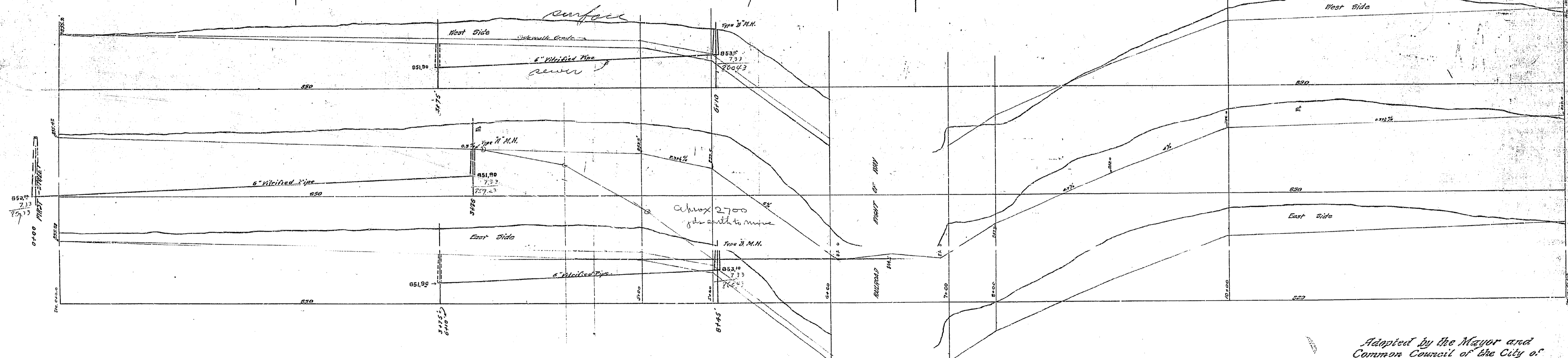


Cross-section of Combined Curb and gutter to be constructed on at Line 66. Proportions of material in the concrete shall be 1 bag of cement, 3 1/2 cubic feet of sand and 3/8 cubic feet of rock or material there-of.



MAP
SHOWING IMPROVEMENTS TO BE MADE ON
ST. ANGELO AVENUE IN PROPOSED SUBDIVISION
OF THE TITLEY PROPERTY.
SCALE 1"=60' A. BRUNSWICK & CO. C.E.
1910, 1912

- 116210 Cement Sidewalk 5" wide
- 116211 Cement " 5" "
- 116212 Combination Curb and Gutter
- 116213 Granite and Cited Roadway
- 1, 2, 3, 4 Type # City Standard
- 5 Type "A" Manhole



LINE 51 PROFILE
Hor. Scale 1 in. = 40 ft.
Vert. Scale 1 in. = 4 ft.

Adopted by the Mayor and
Common Council of the City of
Riverside
1910.
Attest
City Clerk.

422