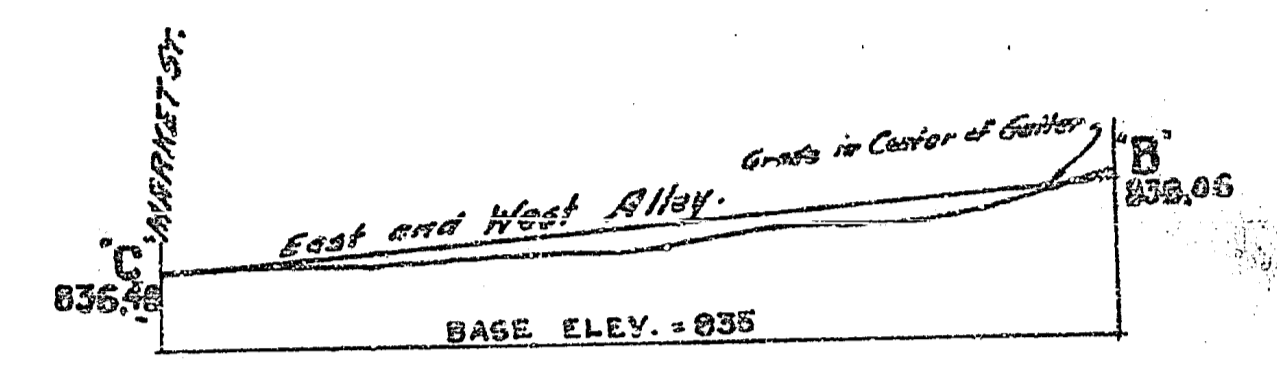
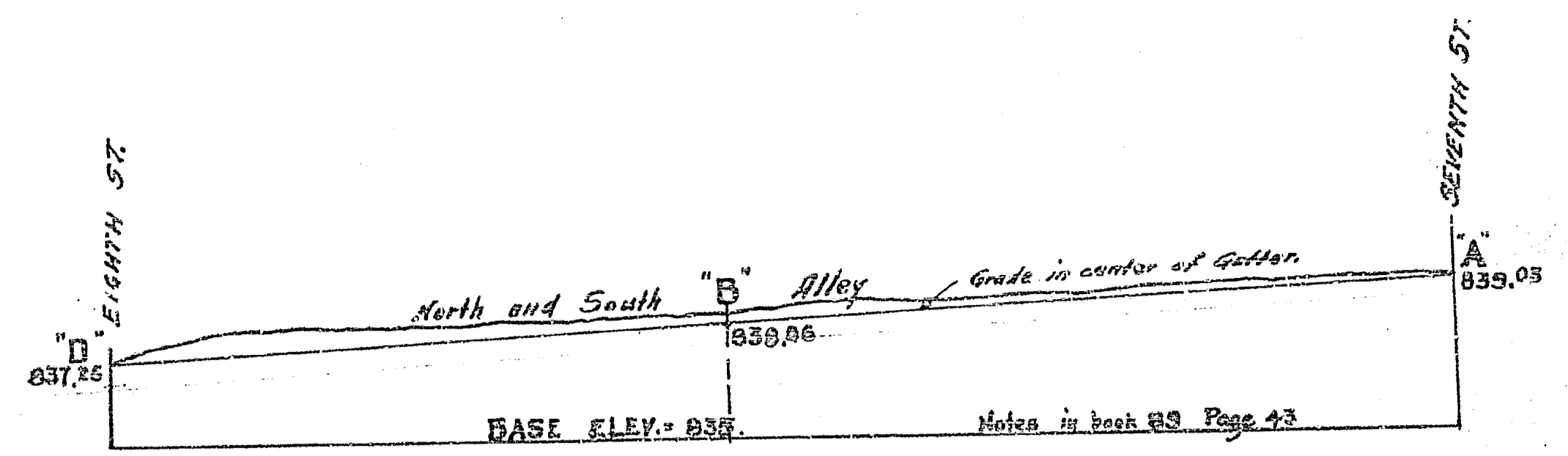
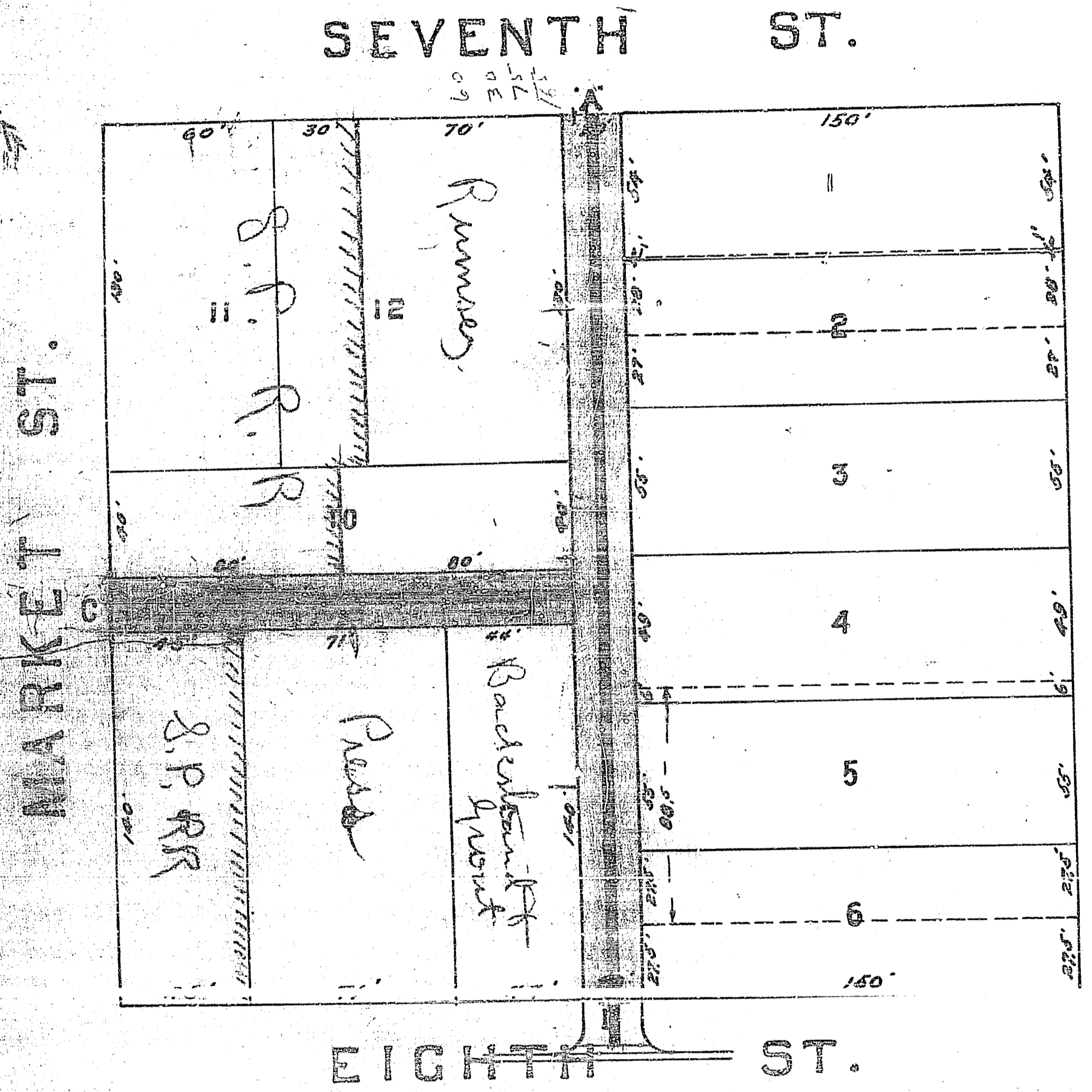
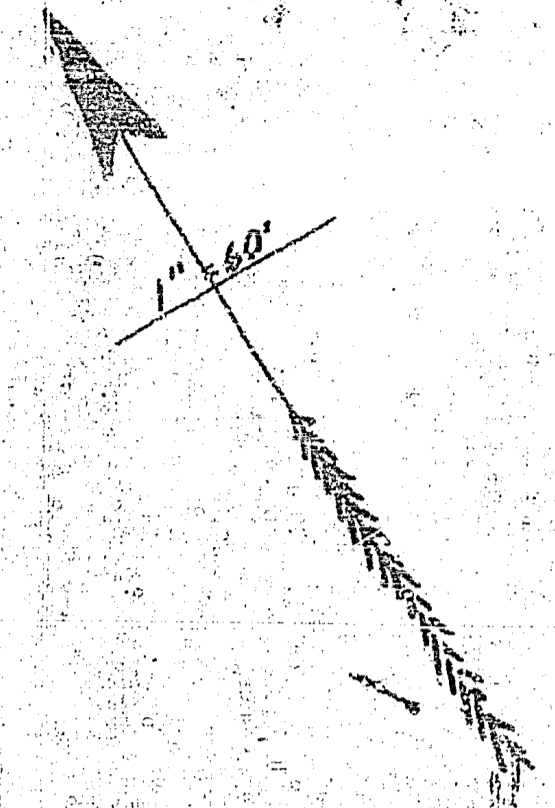


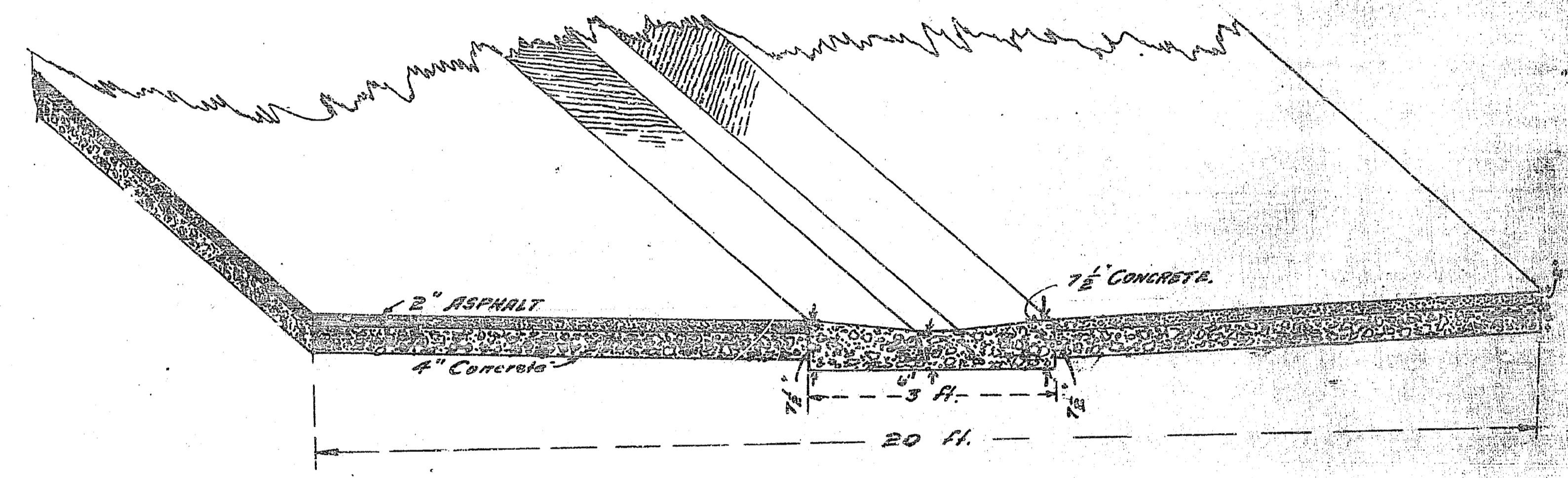
MAP SHOWING PROPOSED ALLEY IMPROVEMENTS IN BLOCK 7 RANGE 7

Scale, 1 in Hor. = 60 ft.
1 in Ver. = 6 ft.

A. P. Campbell,
City Engineer.



MAIN ST.



Adopted by the Mayor and
Common Council of the City of
Riverside Jan. 31, 1911
Attest *M. A. Jacobs*
City Clerk.

*J. S. Co
87530) X 3 -
Main St. alley*

423-851