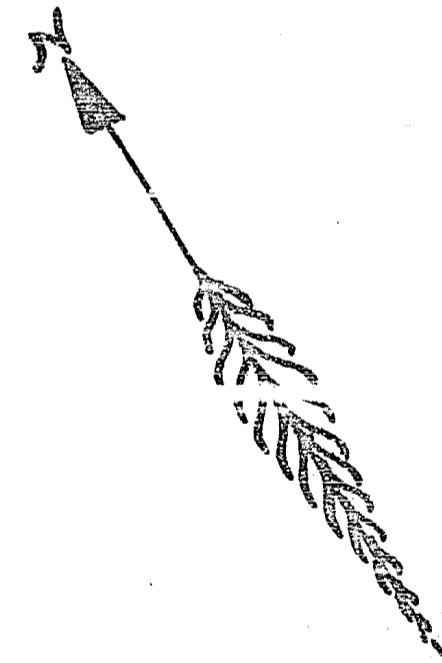
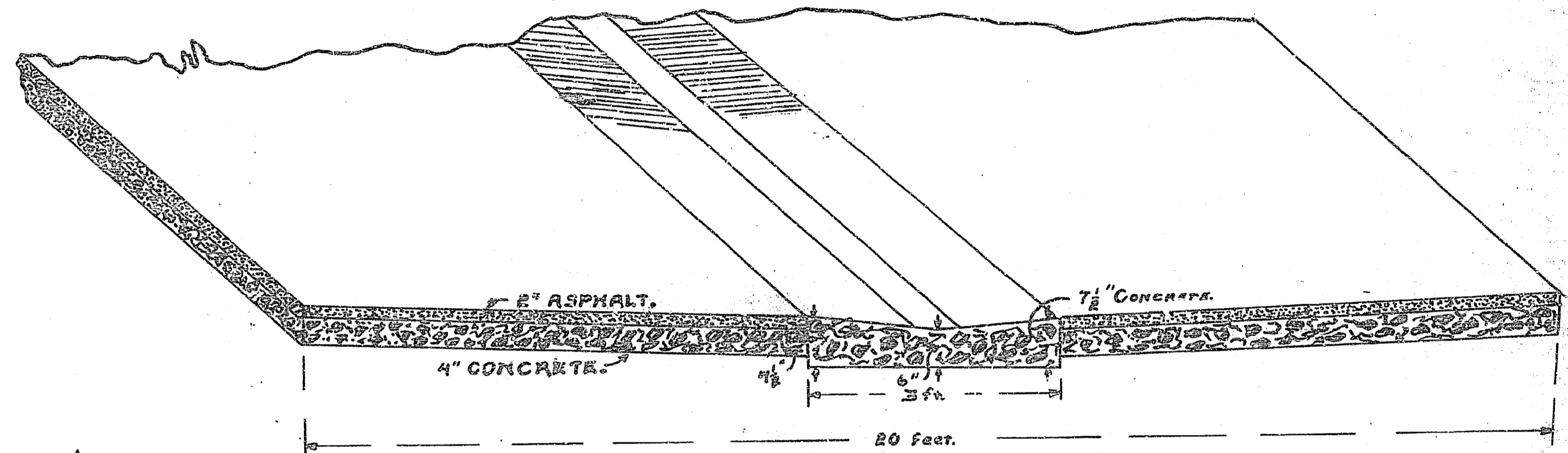
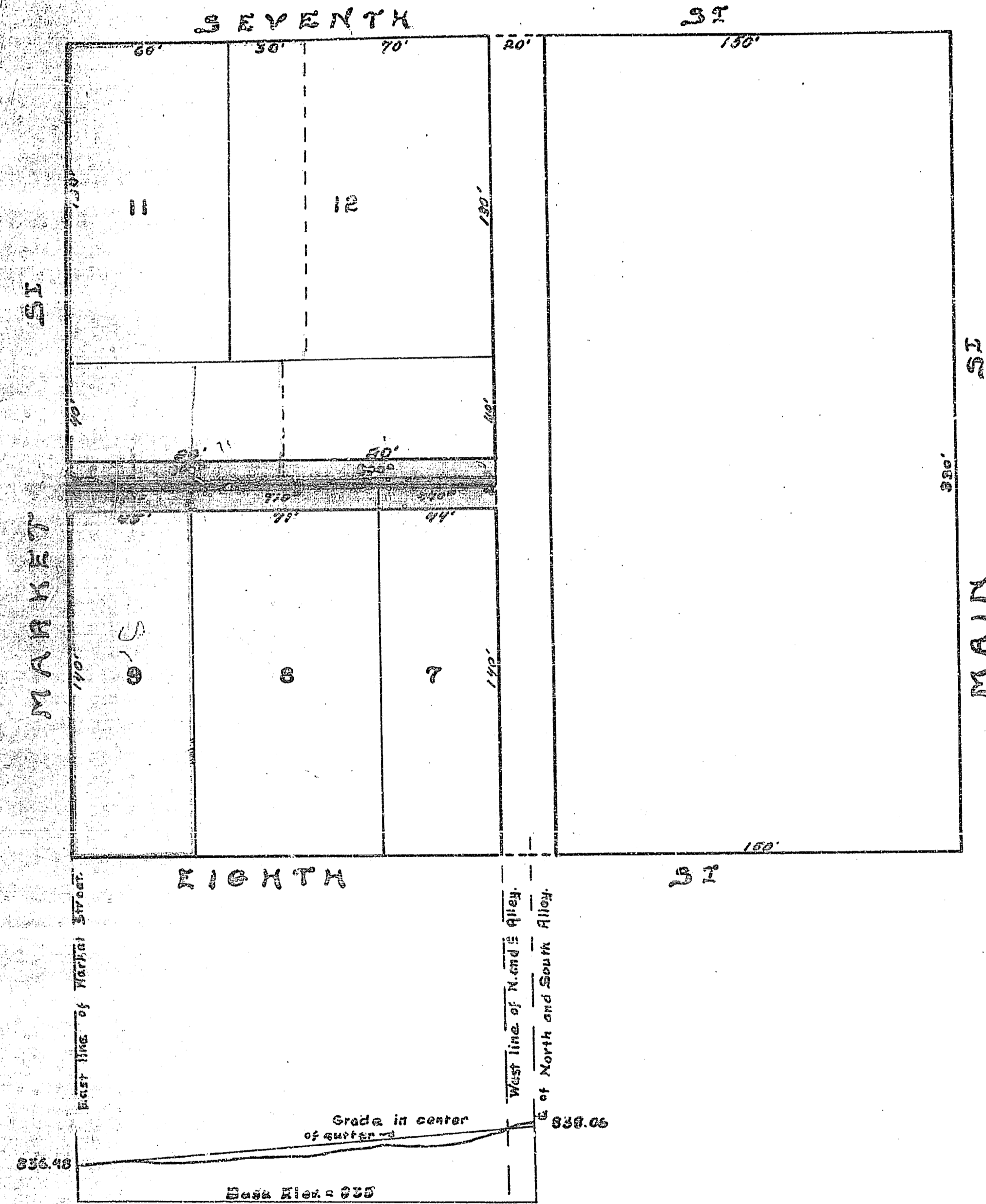


MAP SHOWING PROPOSED
ALLEY IMPROVEMENTS
IN BLOCK 7, RANGE 7.
ON EAST AND WEST ALLEY.

SCALE; 1 in. HOR. = 60 FT.
1 in. VERT. = 6 FT.

A. P. CAMPBELL,
CITY ENGINEER.



Adopted by the Mayor and Common Council
of the City of Riverside MAY 9, 1911.

Attest *W. A. Jacobs*
CITY CLERK.

423 A-884