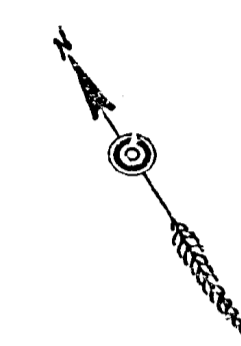


MAP OF PROPOSED IMPROVEMENTS TO BE MADE ON DENTON ST.

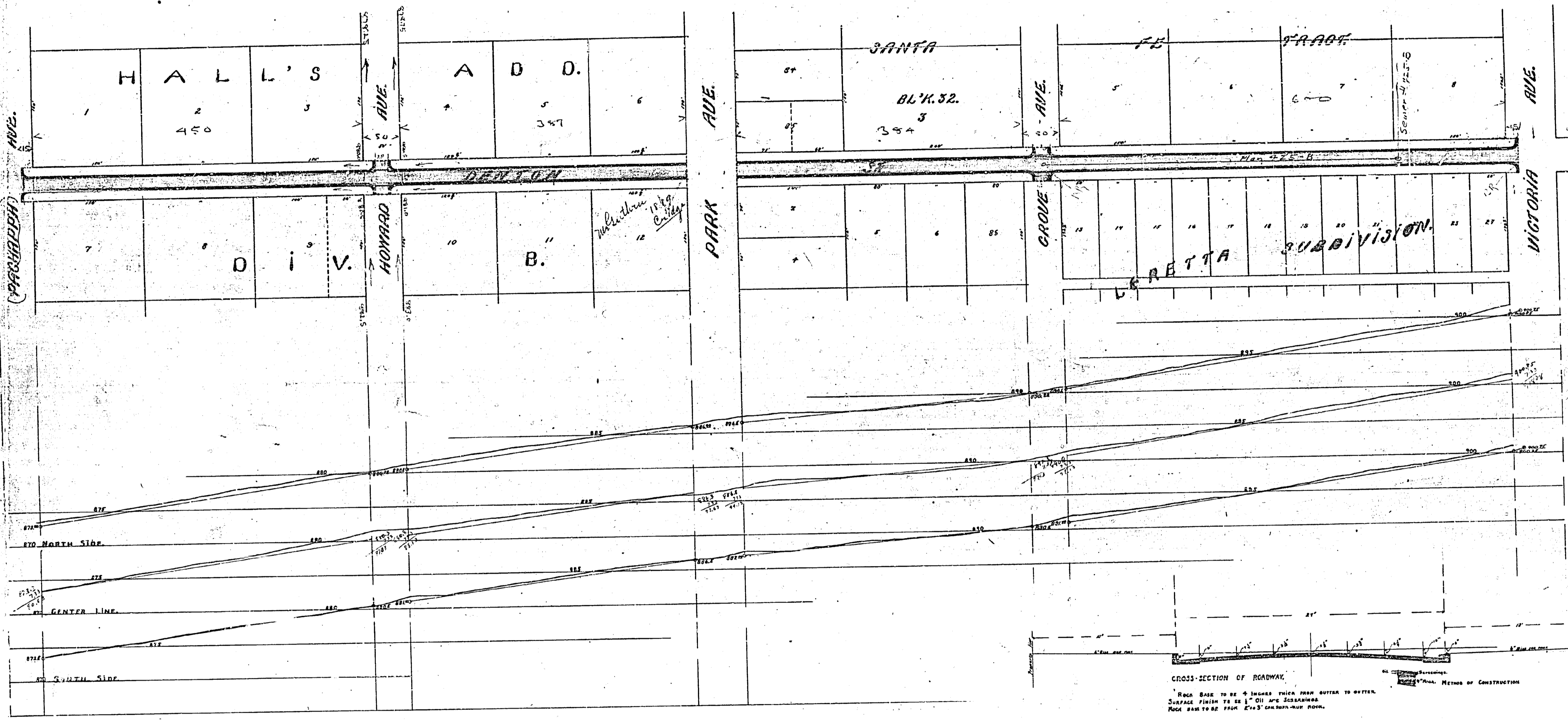
FROM PACHAPPA TO VICTORIA AVE.

SCALE:
1 INCH HOR. = 60 FEET.
1 INCH VERT. = 6 FEET.

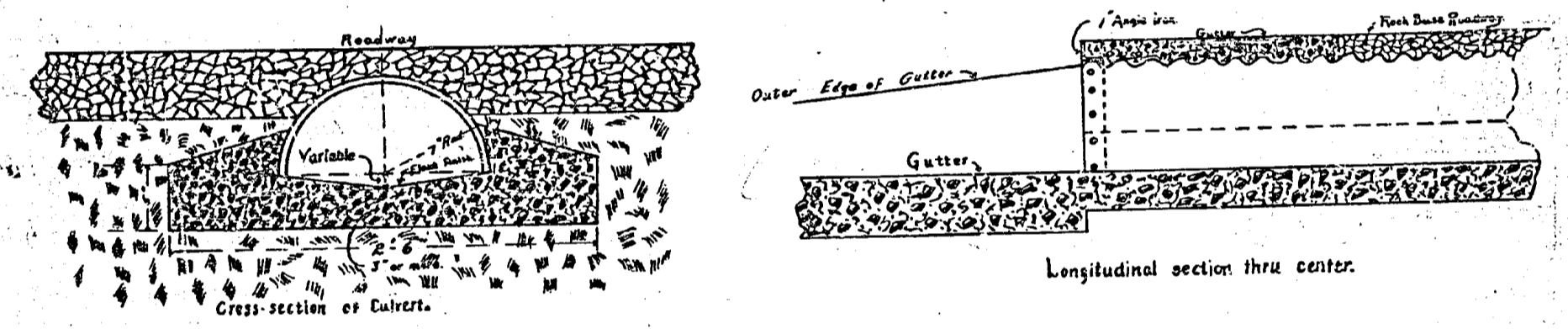
H. P. CAMPBELL
CITY ENGINEER.



Note: The improvements to be made are shown on this map as follows:
 Combination curb and gutter to be constructed is shown thus:
 Pavement to be constructed is shown thus:
 Corrugated iron culverts to be constructed are shown thus:



DETAILS OF GALVANIZED CORRUGATED-IRON CULVERTS.



Preliminary Estimate
 Comb. Curb & Gutter — 2891 lin. ft.
 Manhole Roadway — 4044 sq. ft.
 Corrugated Iron Culverts — 170 lin. ft.

CROSS SECTION OF COMBINATION CURB AND GUTTER.
 Proportions of materials in concrete shall be:
 1 bag cement, 2 1/2 cu. ft. of sand, 3 1/2 cu. ft. of rock.

Adopted by the Mayor and Common Council
 of the City of Riverside, this 21st day of February, 1911.
 Respectfully,
 City Clerk

425