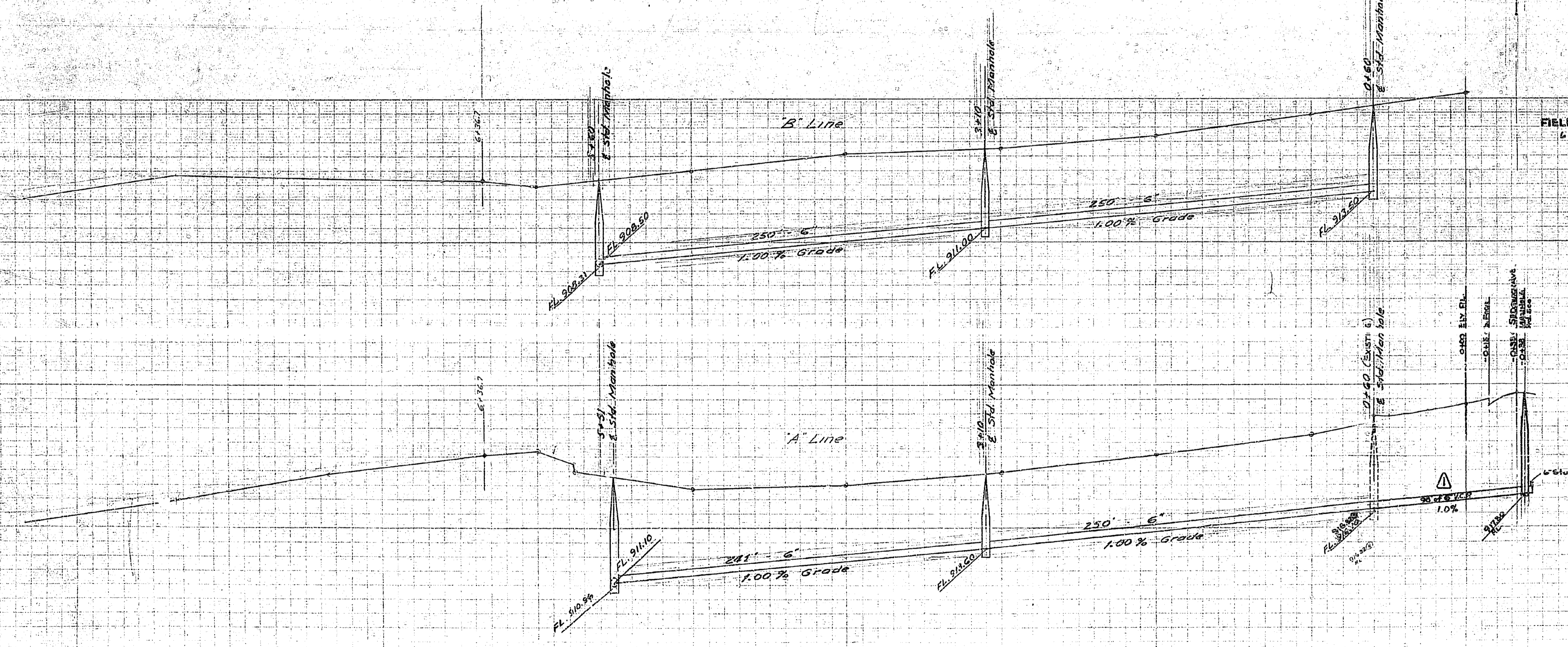
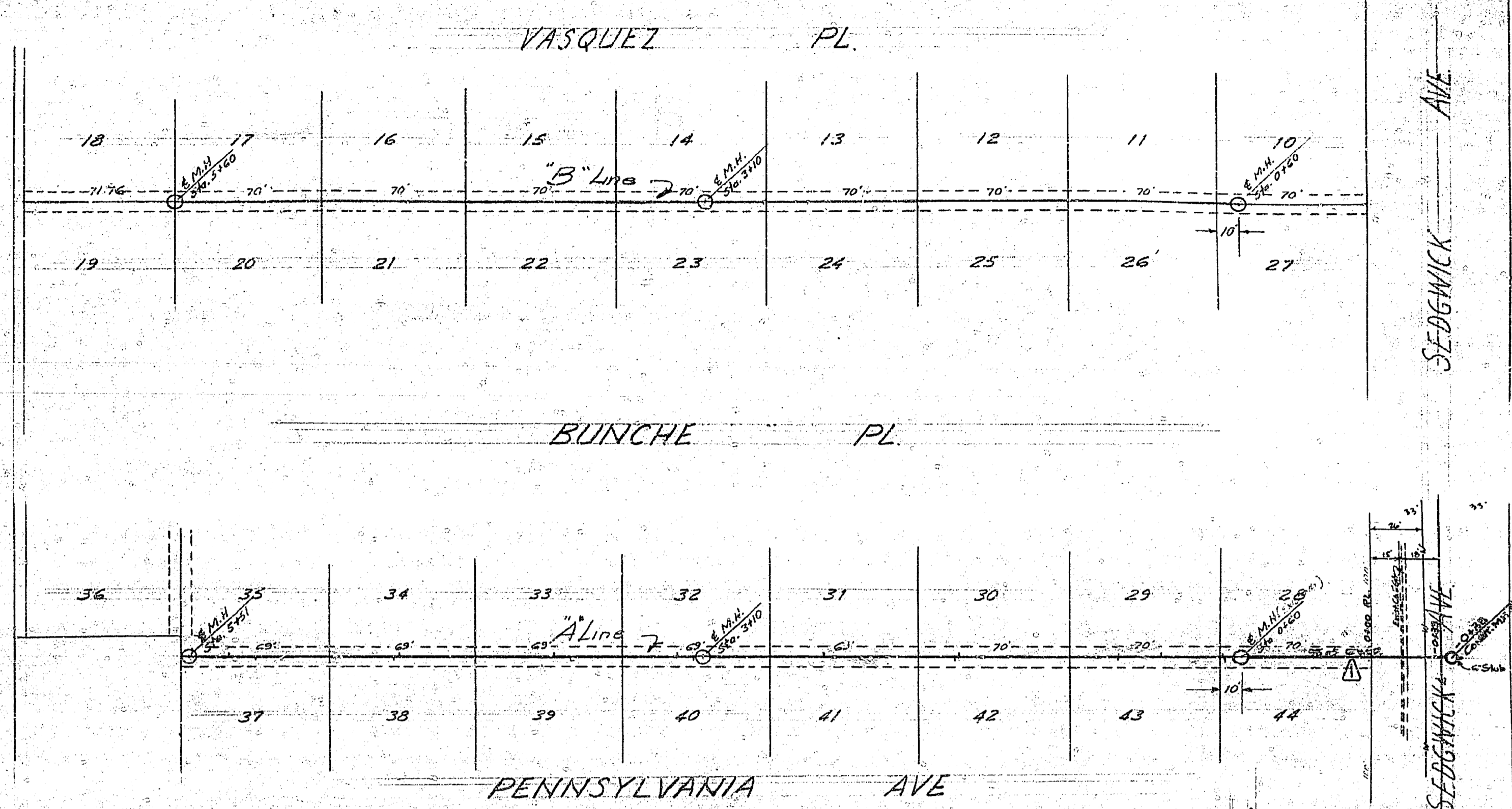


PROPERTY OF
CITY OF RIVERSIDE
CITY ENGINEERING DEPT.

PROPERTY OF
CITY OF RIVERSIDE
CITY ENGINEERING DEPT.



BENCH MARK:
S.E. 10 S.W. Ch. Det. Penn. Ave.
& Sedgwick Ave., 924.92

M.H. Davison
Approved July 31, 1950

REVISIONS:
1. Extended west of Survey 22 to S.E. of
Sedgwick Ave. to George Safford's
Property. (Earning Case 22-100) July 9, 1949
Approved by J.F. Davidson Date Dec 2, 1949

Plain & Profile
STREETER TRACT
Showing
Sewer Lines & Grades
March 1950 J.F. Davidson
Scale: Hor. 1" = 40'
Vert. 1" = 4'

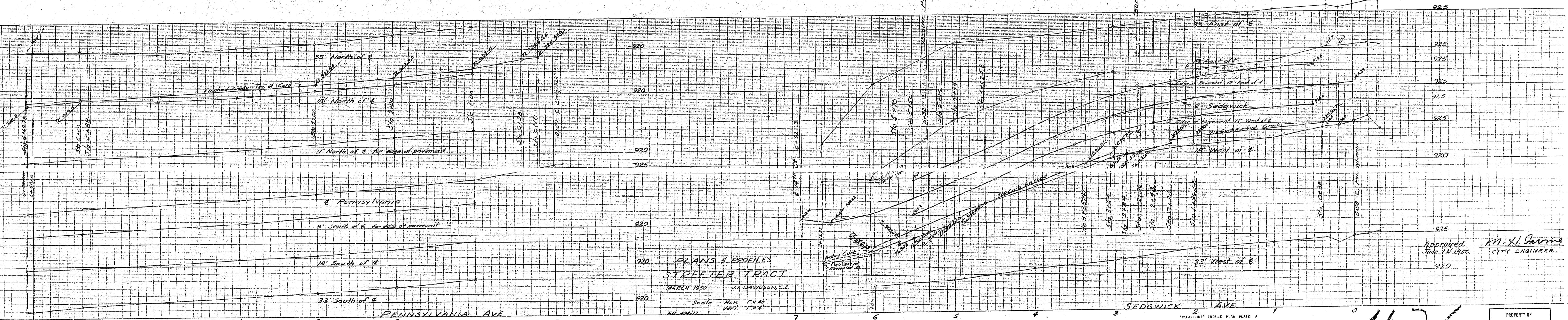
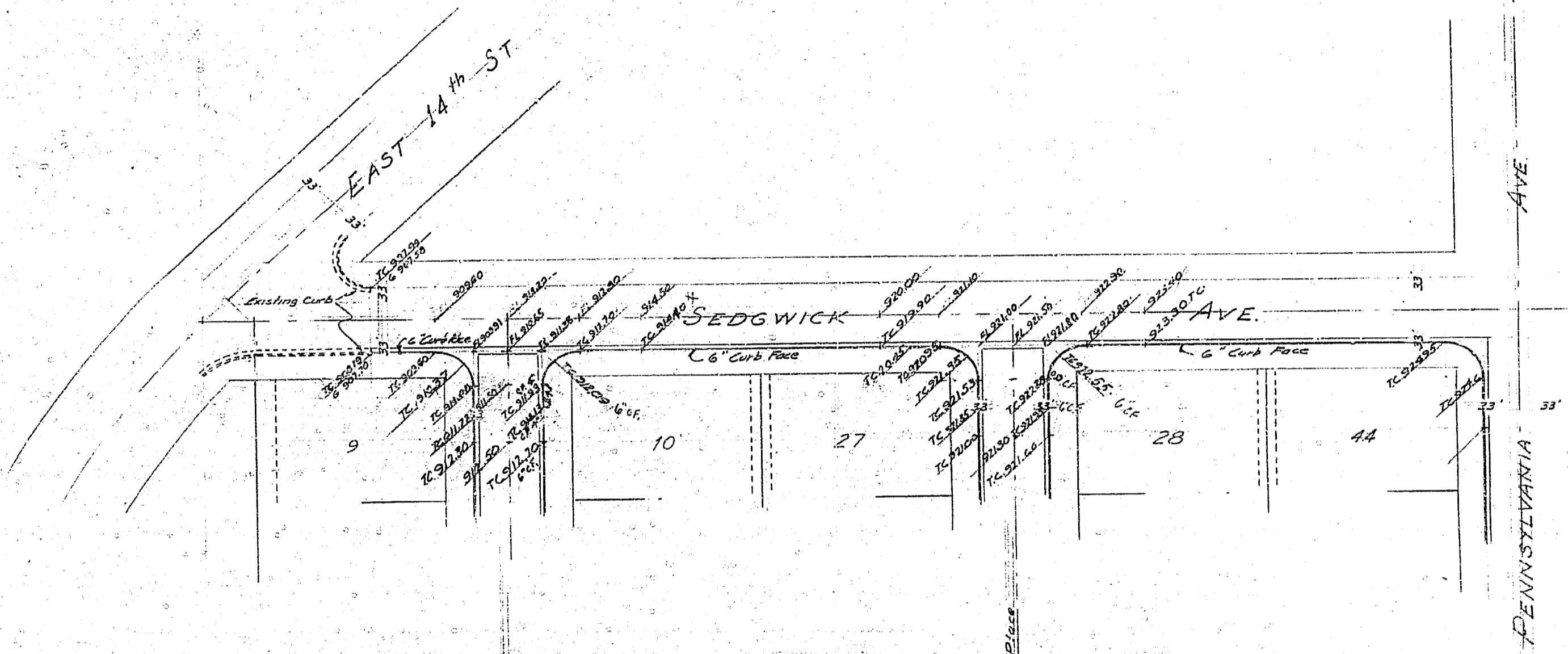
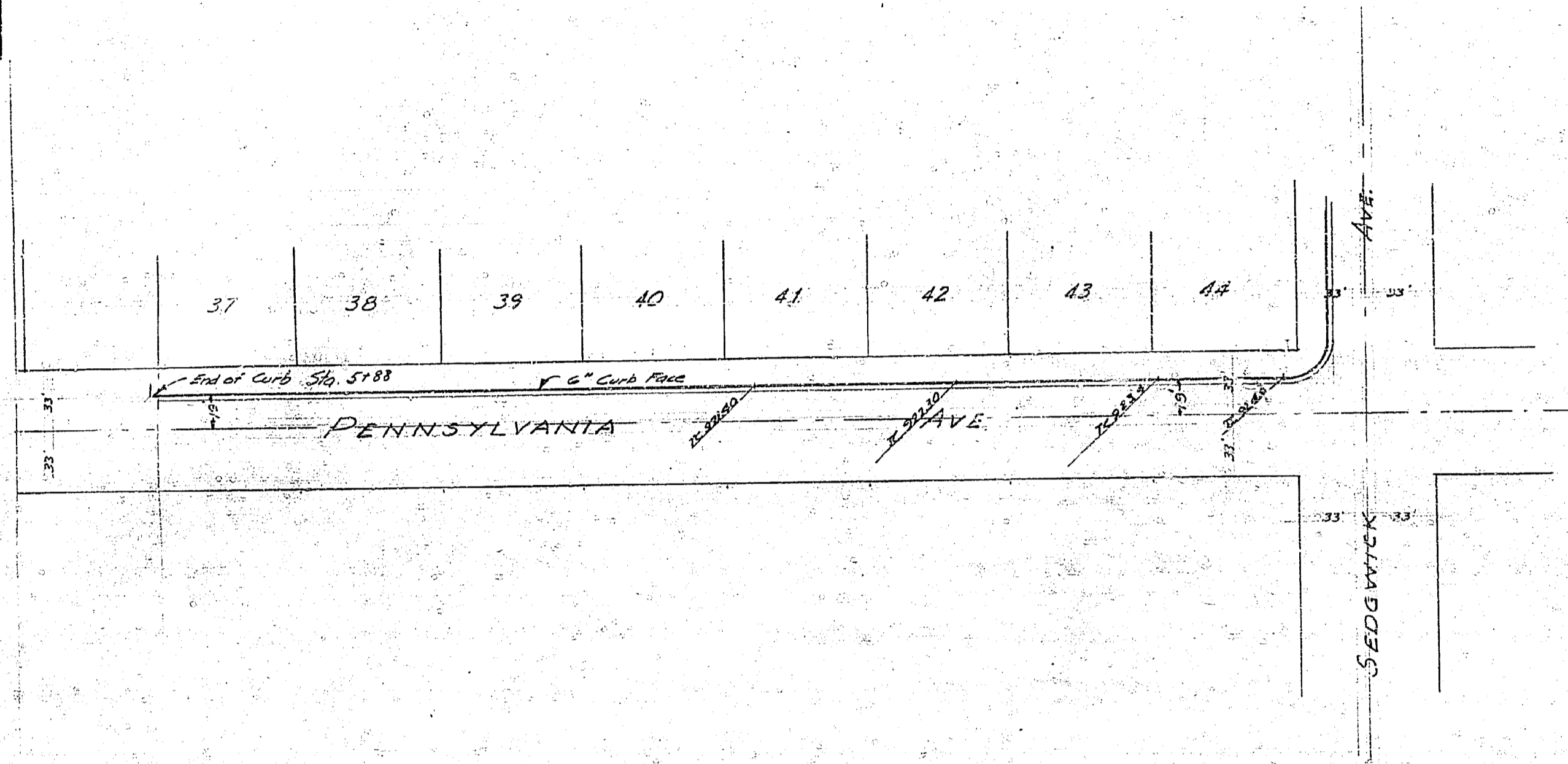
N 426

426

PROPERTY OF
CITY OF RIVERSIDE
CITY ENGINEERING DEPT.

PROPERTY OF
CITY OF RIVERSIDE
CITY ENGINEER'S DEPT.

PROPERTY OF
CITY OF RIVERSIDE
CITY ENGINEERING DEPT.



PLANS & PROFILES
STREETER TRACT
MARCH 1950 J.R. DAVIDSON, C.E.
Scale: Horiz. 1"=40'
Vert. 1"=4'

Approved: *M. H. Garvine*
JUNE 13, 1950
CITY ENGINEER

PROPERTY OF
CITY OF RIVERSIDE
CITY ENGINEERING DEPT.

"CLEARPRINT" PROFILE PLAN PLATE A
"CLEARPRINT" PAPER CO.
MADE IN U.S.A.

"CLEARPRINT" PROFILE PLAN PLATE A
"CLEARPRINT" PAPER CO.
MADE IN U.S.A.

"CLEARPRINT" PROFILE PLAN PLATE A
"CLEARPRINT" PAPER CO.
MADE IN U.S.A.

PROPERTY OF
CITY OF RIVERSIDE
CITY ENGINEERING DEPT.

426

