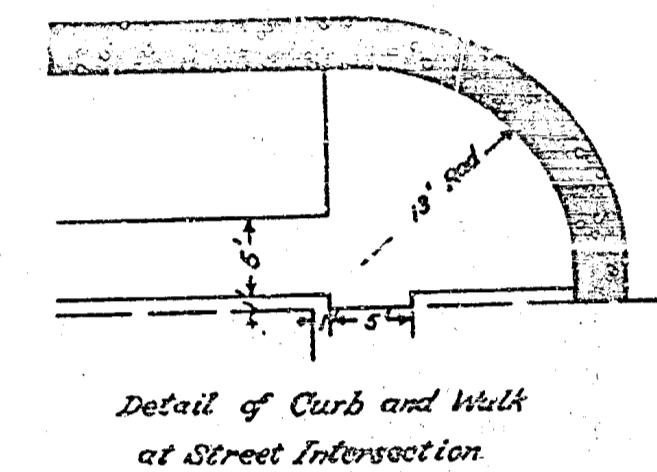
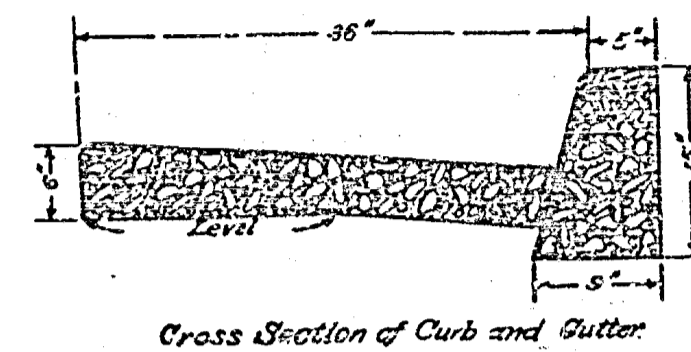
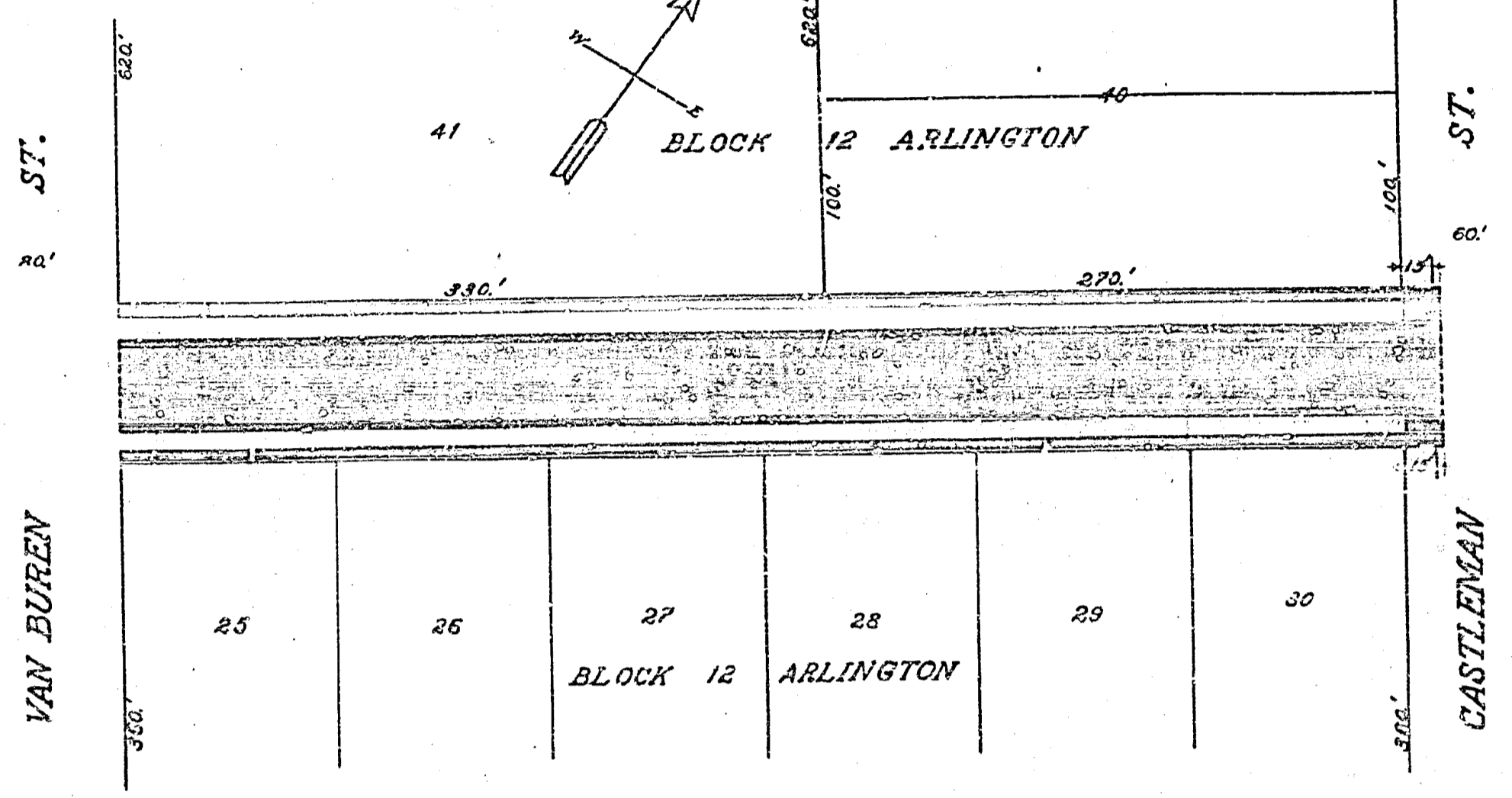
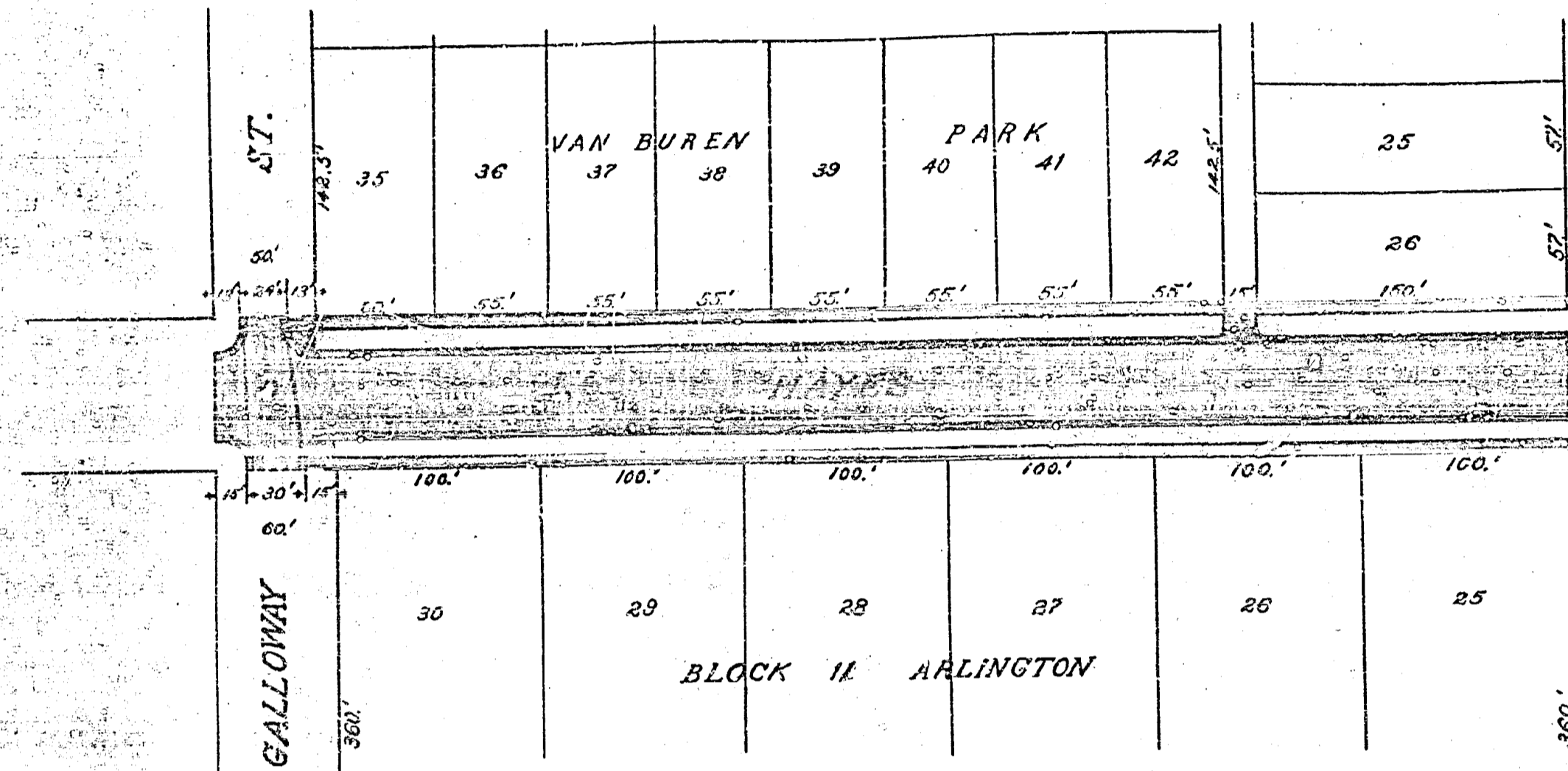


MAP SHOWING IMPROVEMENTS TO BE MADE ON HAYES ST.

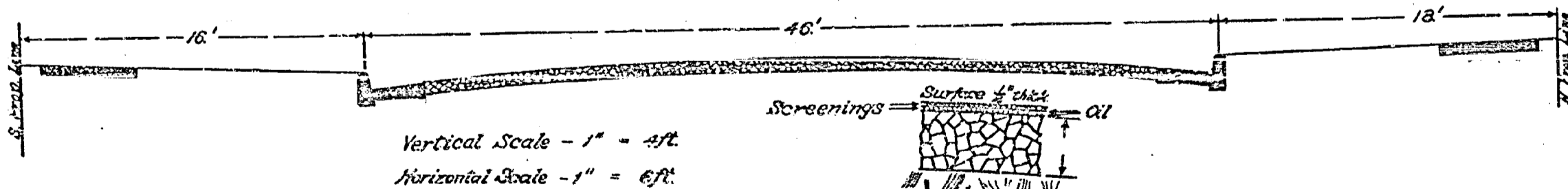
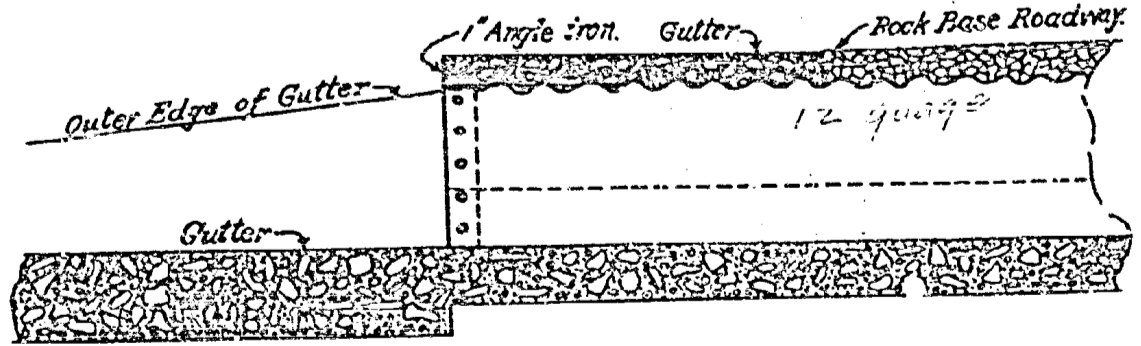
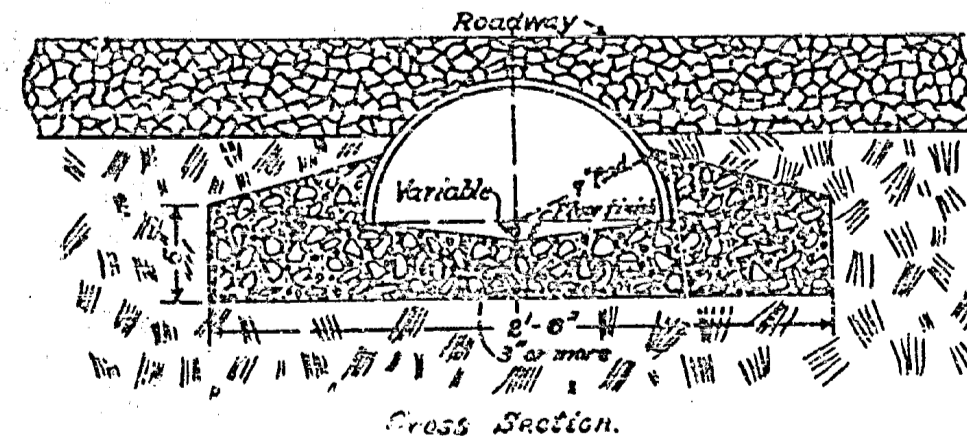
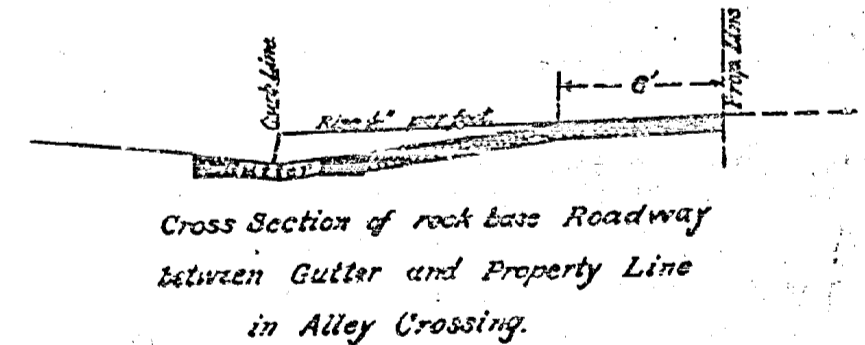
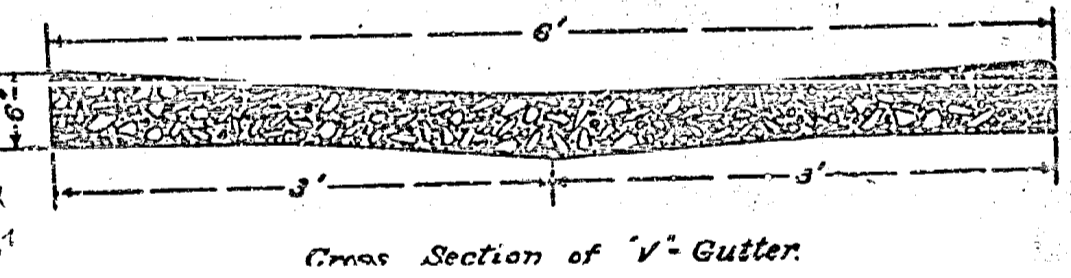
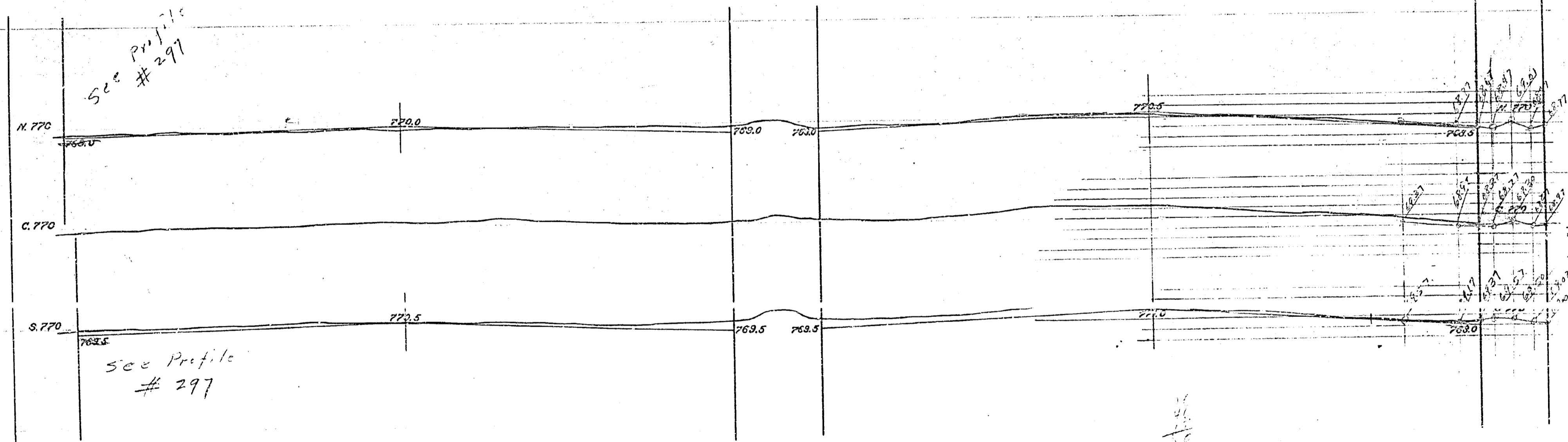
Not constructed

Scales - Vertical 1" = 6'ft.
Horizontal 1" = 60ft.

A. P. Campbell,
City Engineer.



NOTE - Improvements to be made are shown on the Map as follows: -
 Macadam Roadway is shown thus
 Concrete Gutters are shown thus
 Concrete Curb is shown thus
 Cement Sidewalk is shown thus
 14" Corrugated-iron Culvert is shown thus



Vertical Scale - 1" = 4ft.
Horizontal Scale - 1" = 6ft.

Adopted by the Mayor and
Common Council of the City
of Riverside, March 22, 1911.
Attest *[Signature]*
City Clerk.

Stations of Galvanized Corrugated-iron Culverts

427B