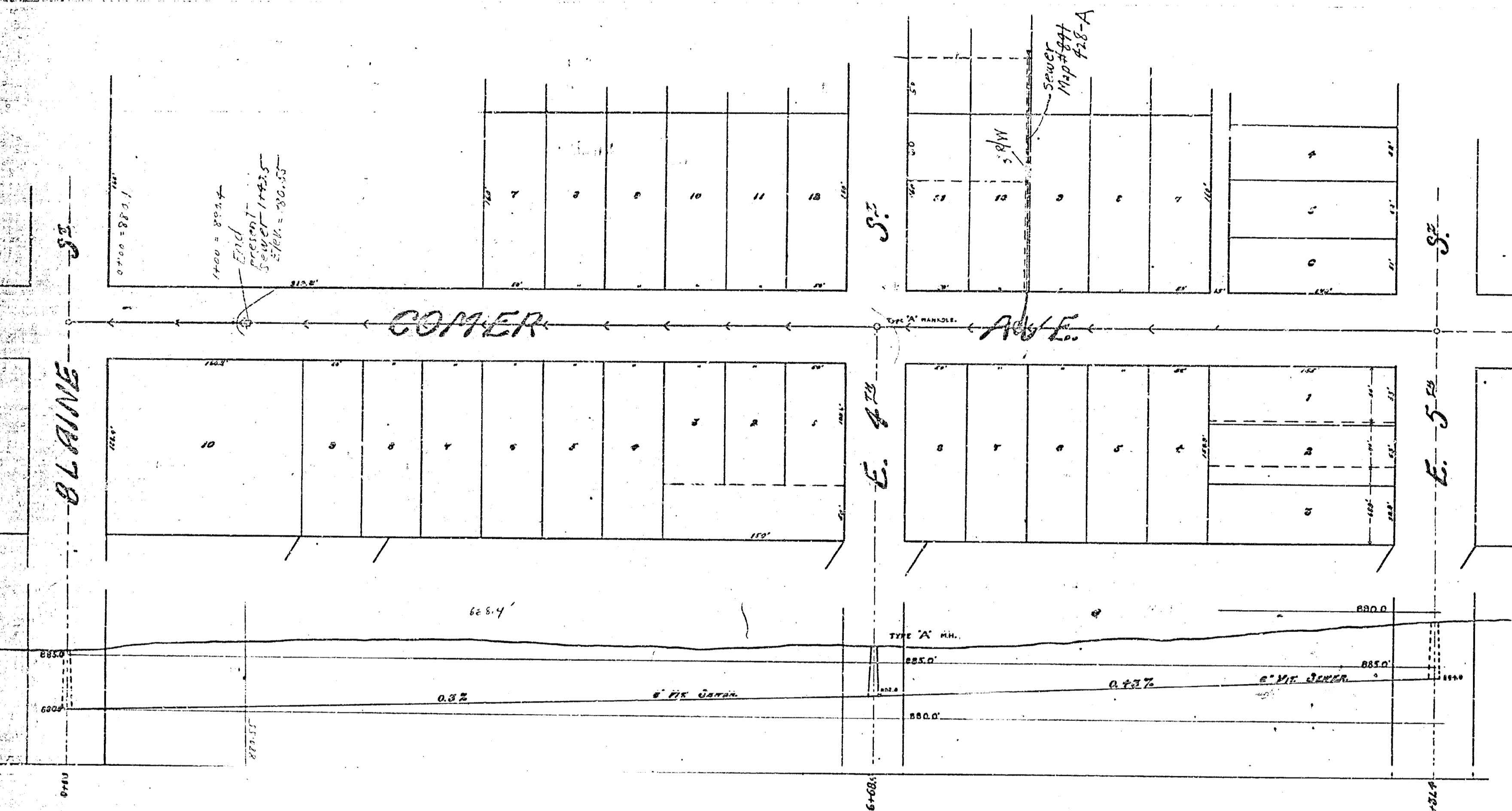


39

40



MAP SHOWING PROPOSED SEWER FOR
COMER AVE.

FROM BLAINE to E. 5th ST

SCALE:
1 inch Hor. = 40 ft.
1 inch Vert. = 5 ft.

D.R. CAMPBELL,
CITY ENGINEER.

Explanation: Type "A" Manhole to be constructed at 5th and Comer Ave. shown thus; =
6" Vitrified Sewer to be constructed is shown thus; —
Constructed Sewer shown by broken lines, thus; - - -

Adopted by the Mayor and Common
Council of the City of Riverside, March 3rd, 1911.
Attest *[Signature]*
City Clerk.

428

39