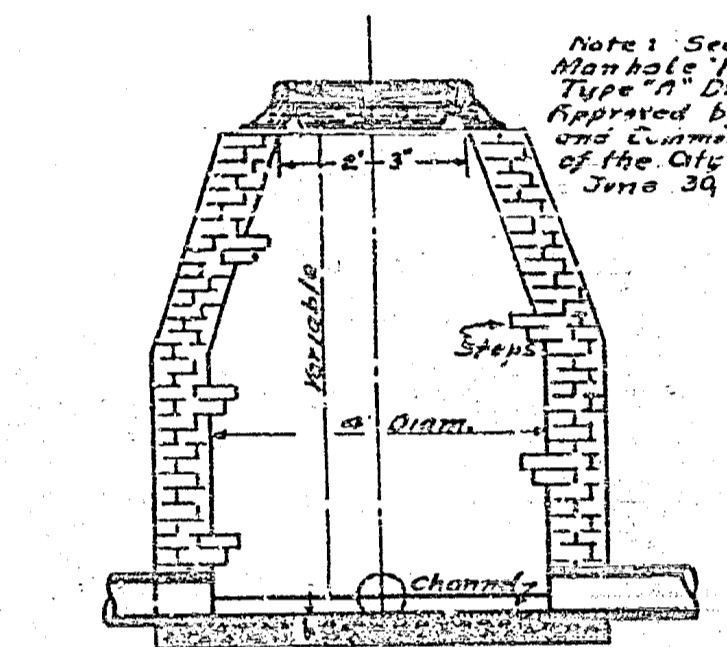
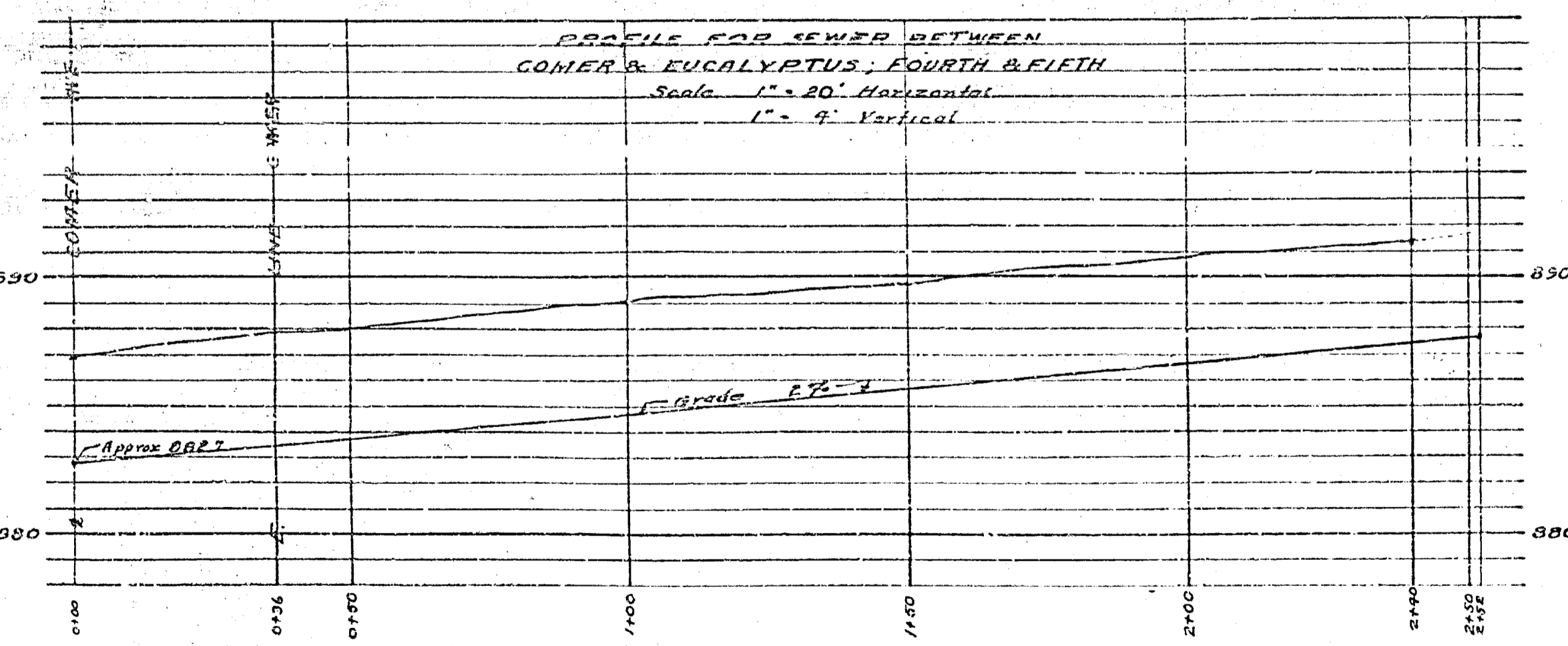
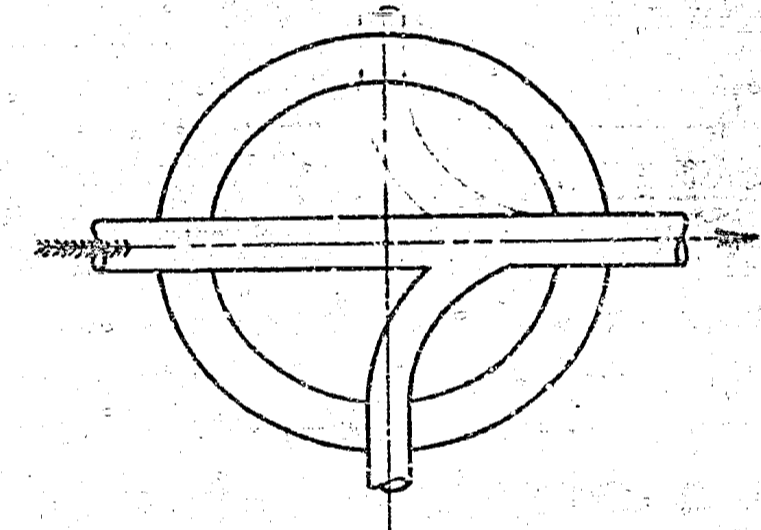


**MAP OF PROPOSED SEWER EXTENSION
IN BLOCK 3, OF H. P. KYES TRACT**
A. P. CAMPBELL CITY ENGINEER 1927

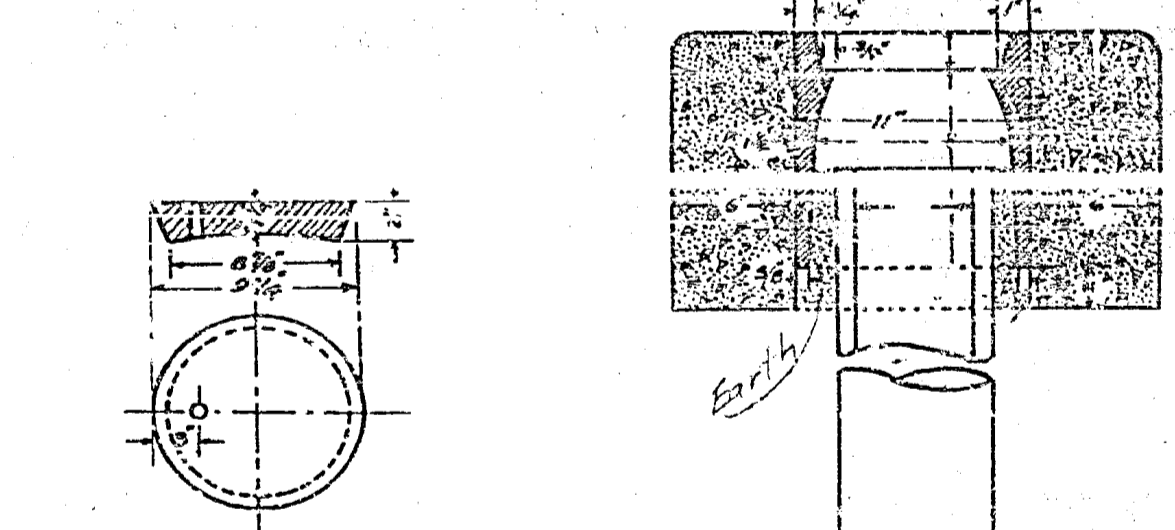
Adopted by the Mayor and Common
Council of the City of Riverside, this
10th day of May 1927.
Attest _____
Clerk of the City of Riverside



Note: See Standard
Manhole Head Casting
Type 'A' Drawing No. 823
Approved by the Mayor
and Common Council
of the City of Riverside
June 29, 1925.

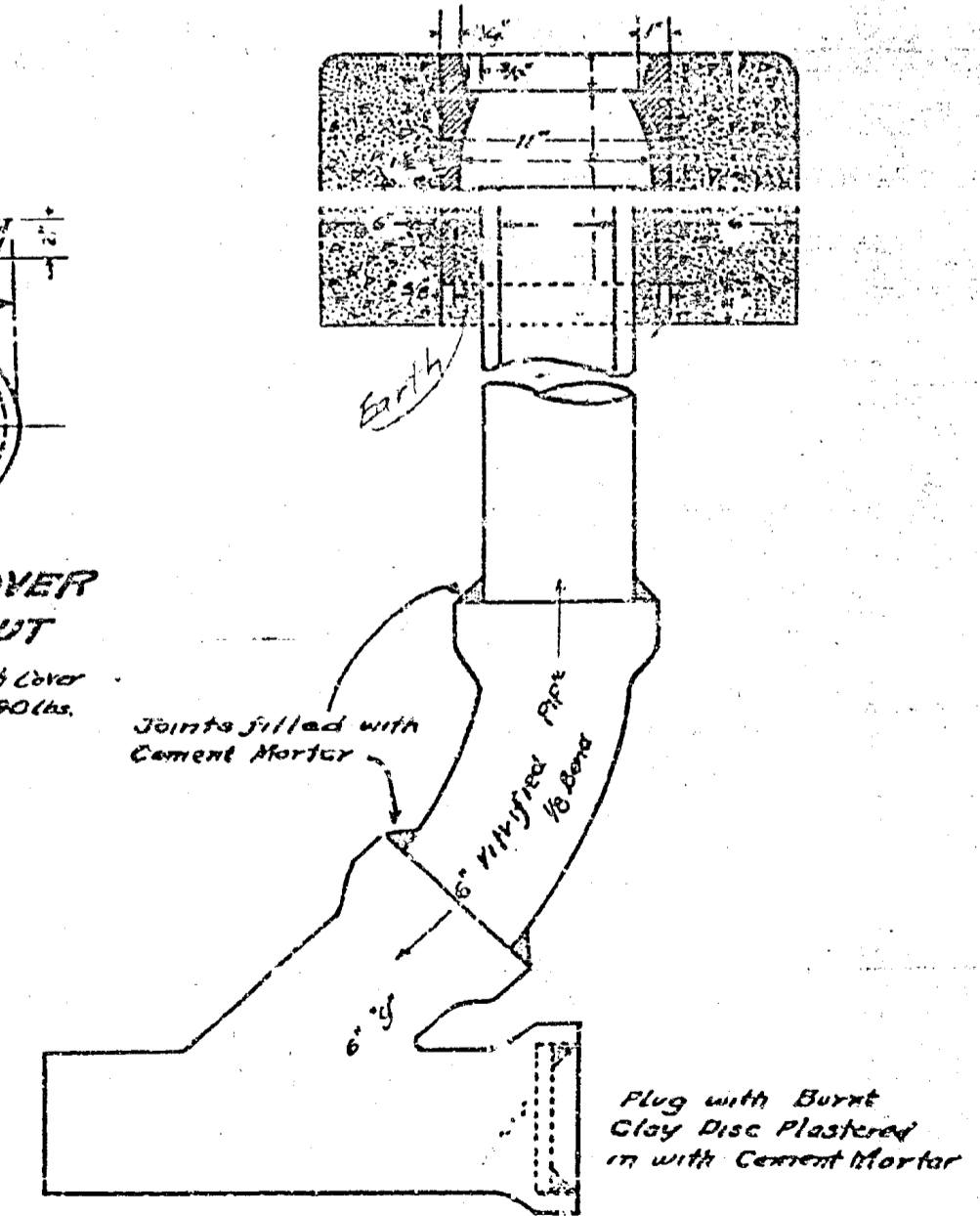


Plan of Type "A" Manhole



DETAIL OF COVER
FOR CLEANOUT

Note: Frame Cast-iron with Cover
to weigh not less than 50 lbs.



DETAIL OF CLEANOUT

428A