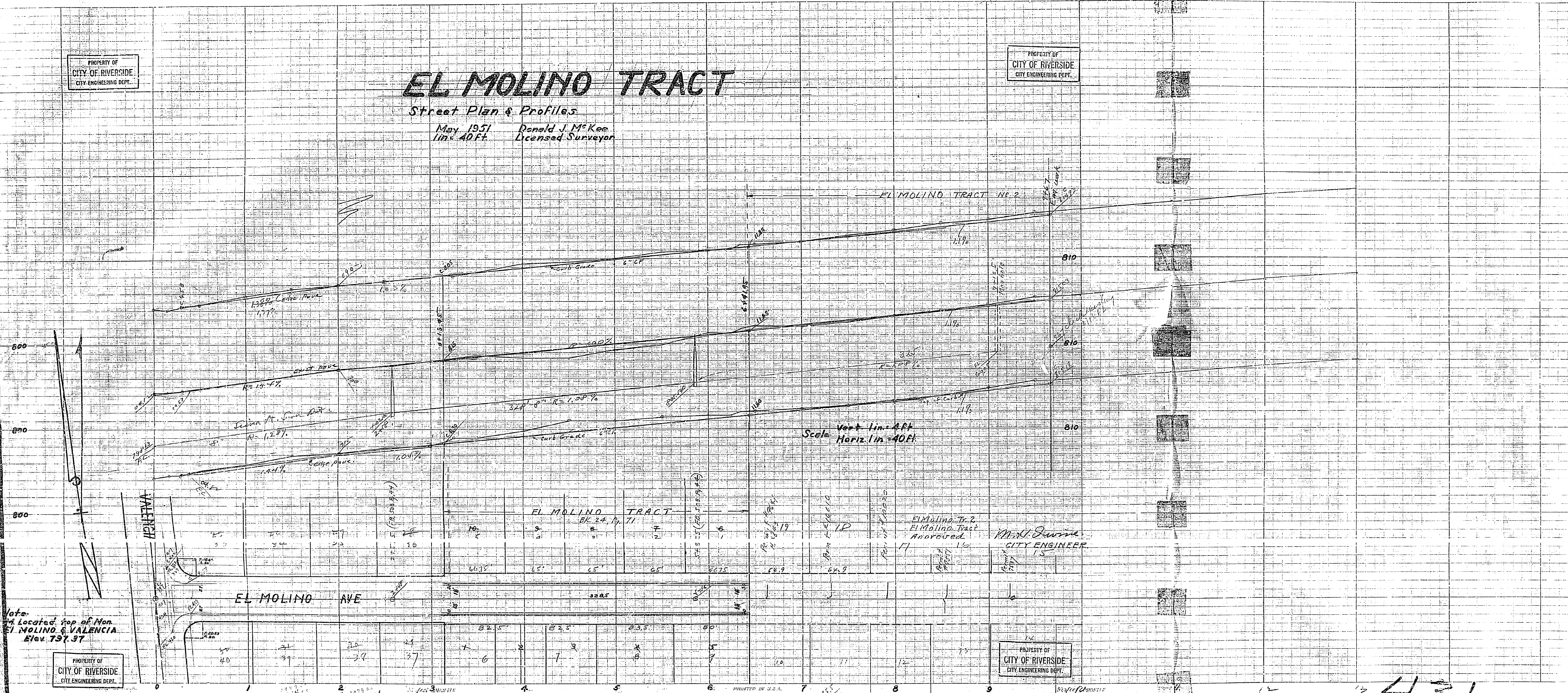


PROPERTY OF
CITY OF RIVERSIDE
CITY ENGINEERING DEPT.

EL MOLINO TRACT

Street Plan & Profiles
May 1951
1 in. = 40 FT.
Donald J. McKee
Licensed Surveyor

PROPERTY OF
CITY OF RIVERSIDE
CITY ENGINEERING DEPT.



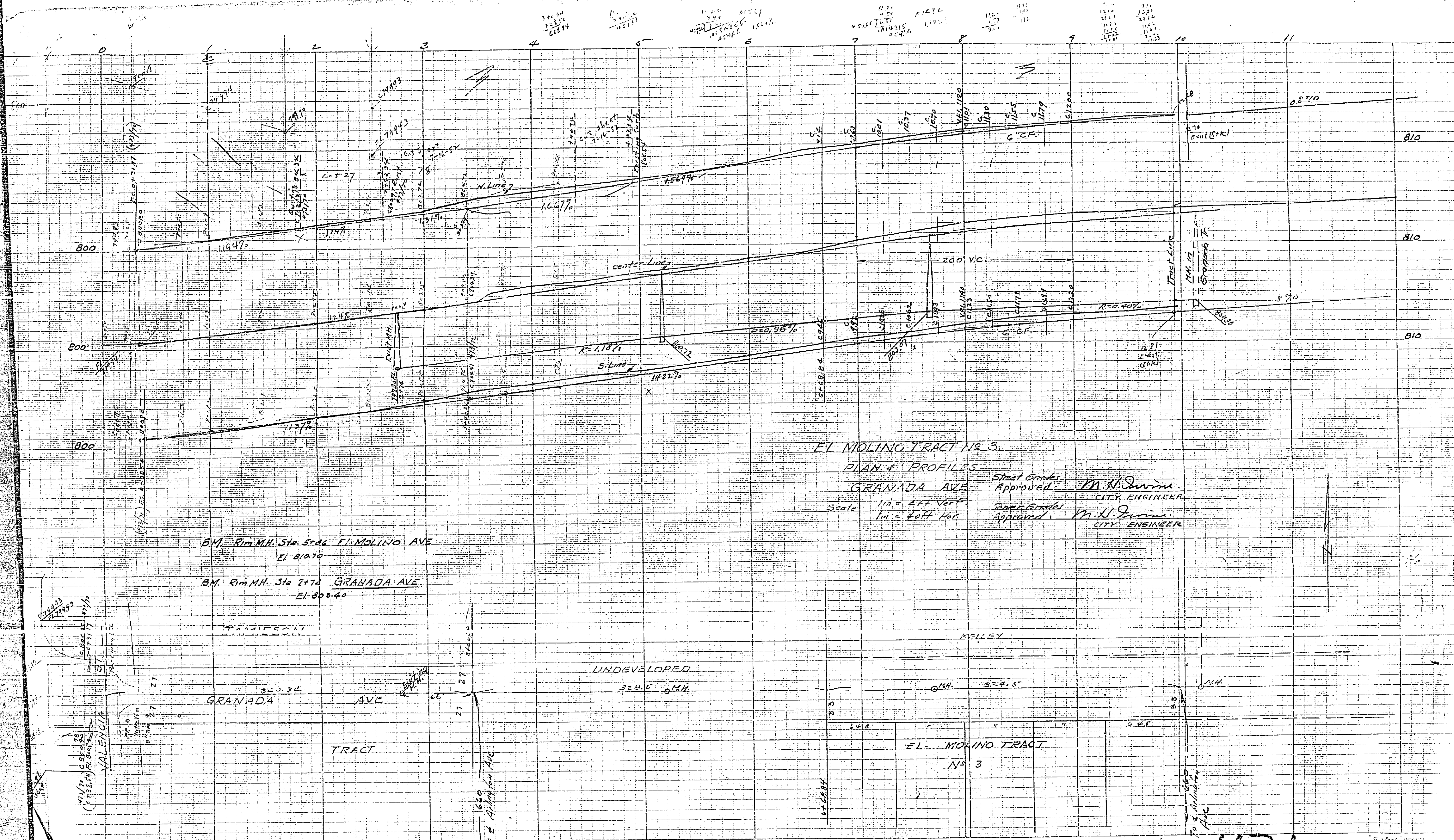
Note:
Located top of Non
El MOLINO & VALENCIA
Elev. 737.37

PROPERTY OF
CITY OF RIVERSIDE
CITY ENGINEERING DEPT.

PROPERTY OF
CITY OF RIVERSIDE
CITY ENGINEERING DEPT.

Max. D. Swaine
CITY ENGINEER

431



EL MOLINO TRACT NO. 3
 PLAN & PROFILES
 GRANADA AVE
 Scale 1/4" = 2 FT VERT
 1/4" = 40 FT HOR.
 Street Grades Approved: M. H. Johnson, CITY ENGINEER
 Street Grades Approved: M. H. Johnson, CITY ENGINEER

BM. Rim M.H. Sta. 5+84 EL MOLINO AVE
 El. 810.70
 BM. Rim M.H. Sta. 2+74 GRANADA AVE
 El. 808.40

PARSONS
 UNDEVELOPED
 GRANADA AVE
 TRACT
 VALLEYVIEW
 KELLEY
 EL MOLINO TRACT NO. 3
 GRANADA AVE

ON 100% RAG PAPER MADE IN U.S.A.

PRINTED IN U.S.A.
UNION RAG PAPER MADE IN U.S.A.

431