

PROPOSED IMPROVEMENT OF
ELEVENTH ST.
L. E. HAFZAR, CITY ENGINEER 1925.

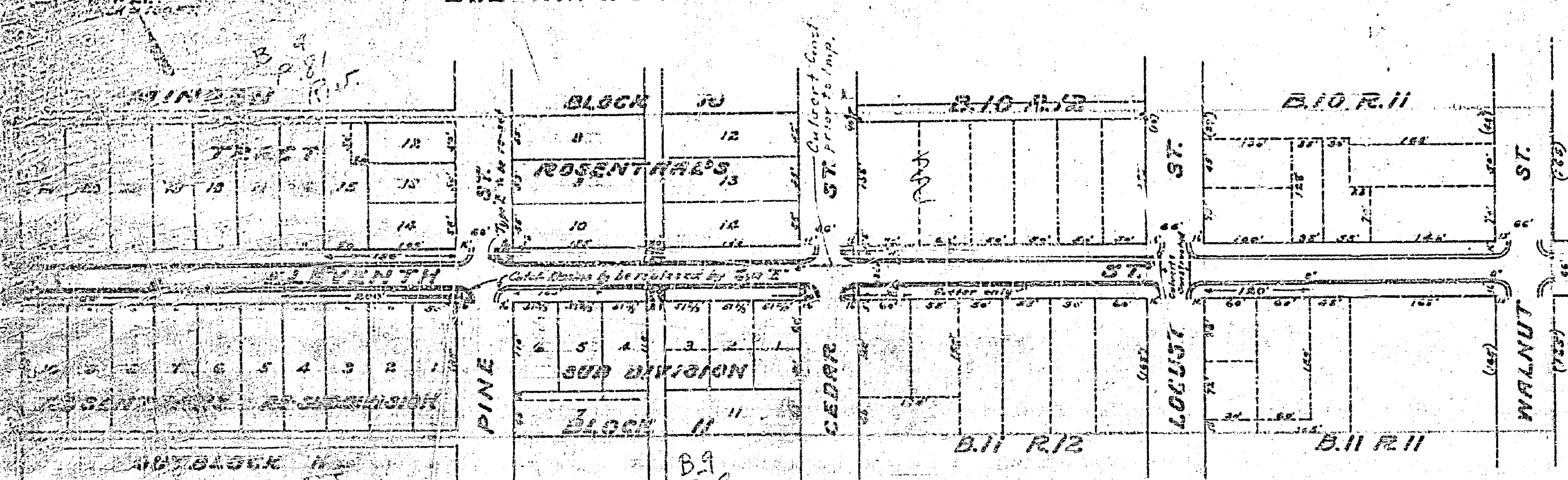
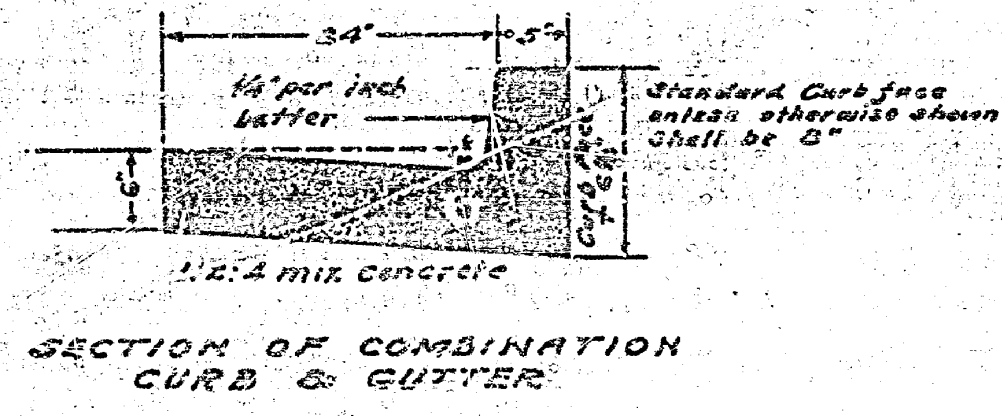
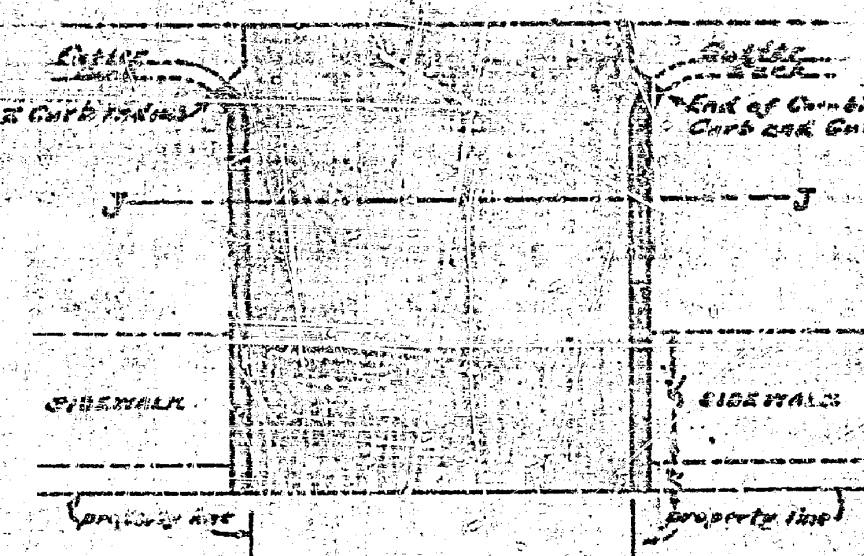
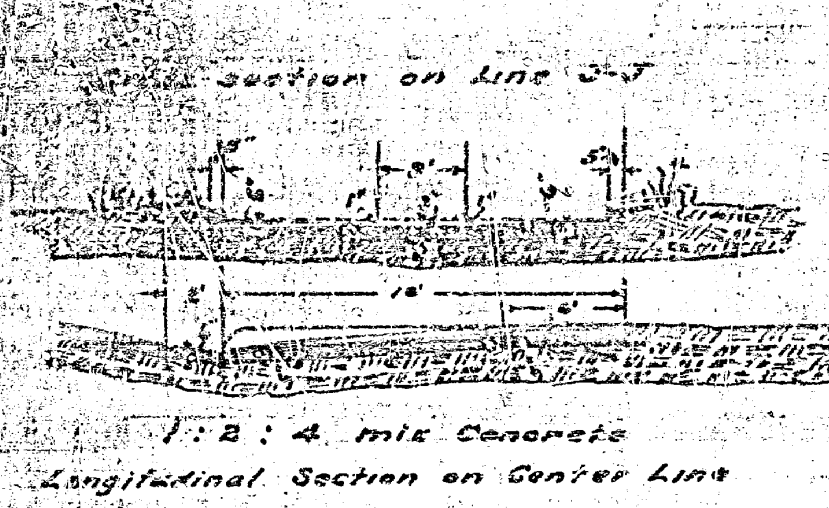


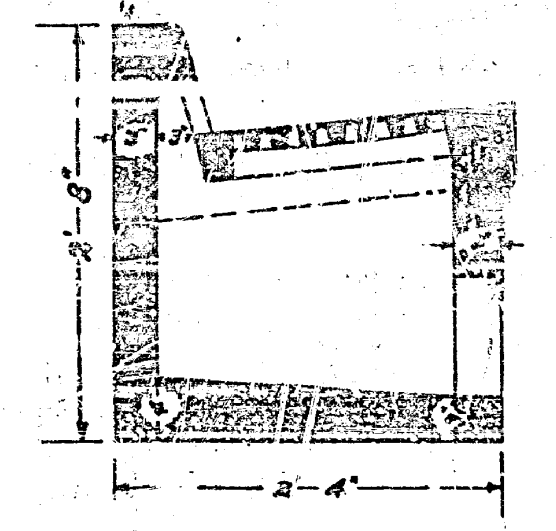
Diagram showing Construction of Rilly Entrances



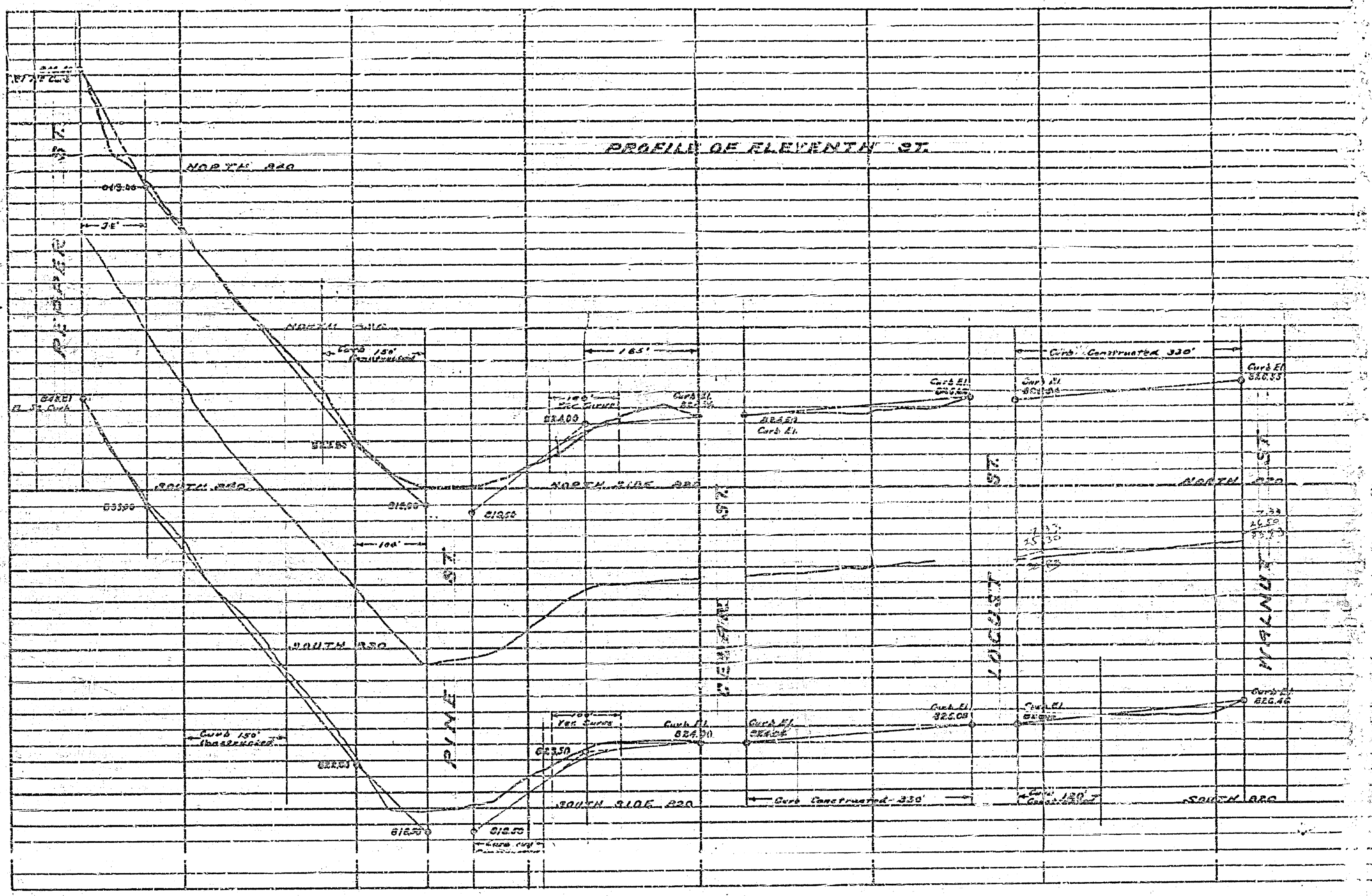
SECTION OF COMBINATION CURB & GUTTER

LEGEND

- Combination Concrete Curb and Gutter shown thus: [Symbol]
- Concrete Rilly Approaches [Symbol]
- 75-75" Curbs Basins [Symbol]
- Concrete Gutter [Symbol]
- Sidewalk as constructed [Symbol]



TYPE "2" CATCH BASIN



Approved by the Mayor and Common Council of the City of Riverside on this 1st day of September 1925.
L. E. HAFZAR
CITY ENGINEER

MAP NO 336
432-A

432A