

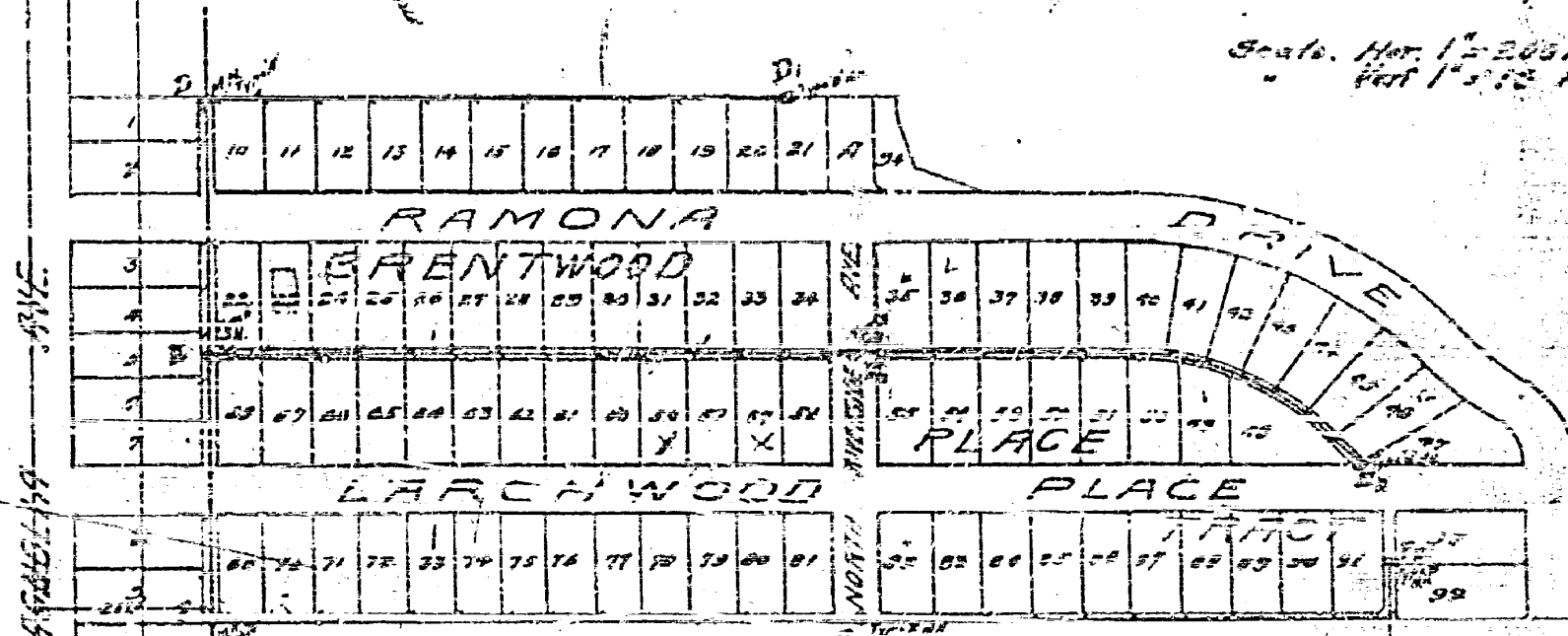
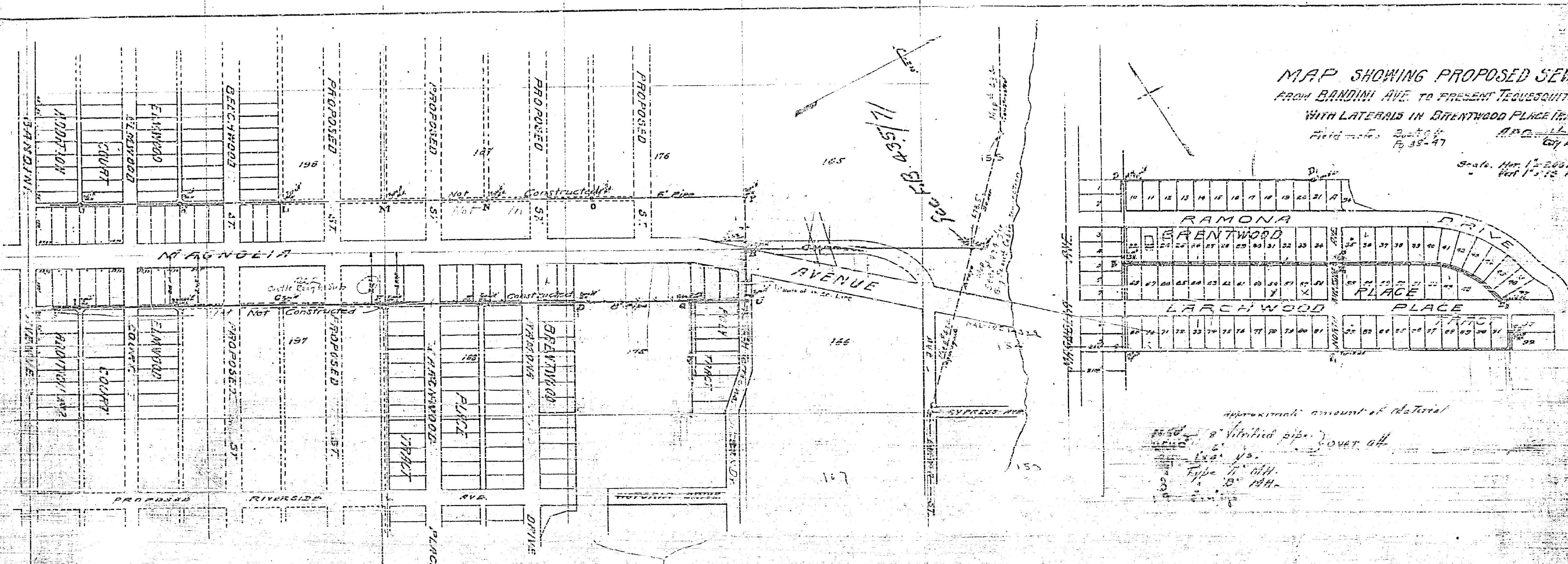
MAP SHOWING PROPOSED SEWER  
FROM BANDINI AVE. TO PRESENT TEBESQUITE BRIDGE

WITH LATERALS IN BRENTWOOD PLACE TRACT

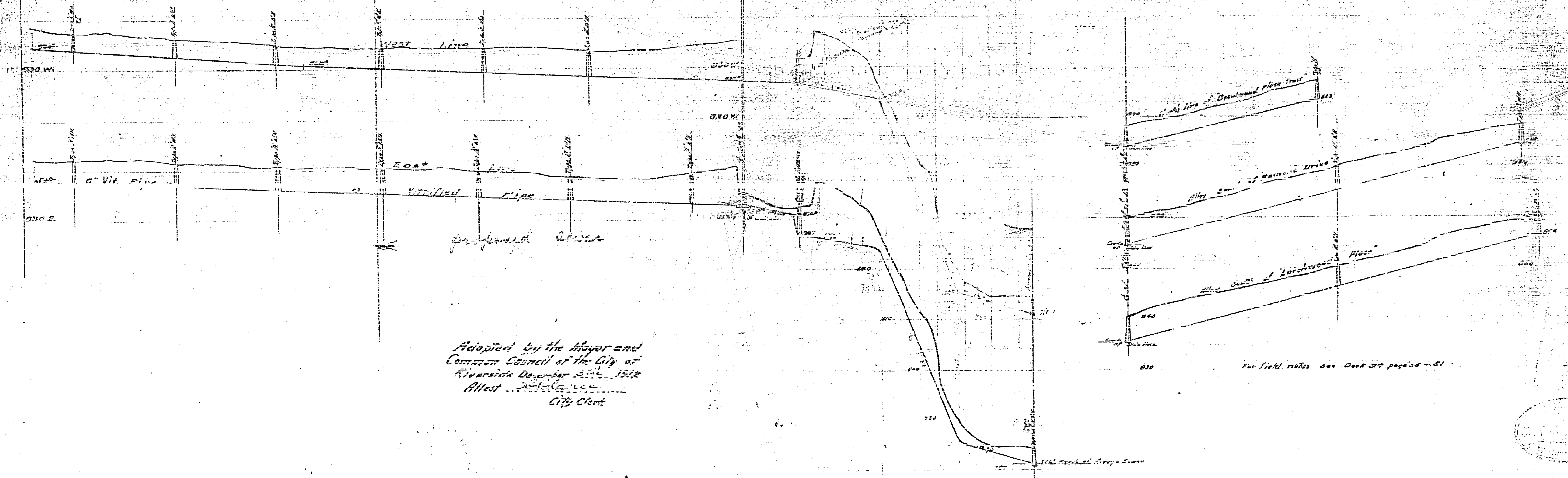
Field notes Book 34  
Pg 35-47

A.P.C. 144  
City Engineer

Scale: Hor. 1" = 200 FT.  
Vert. 1" = 10 FT.



Approximate amount of material  
2450' of 12" vitrified pipe, 100' over all  
12" x 12" vs.  
Type 1" x 11"  
Type 2" x 11"  
Type 3" x 11"



Adopted by the Mayor and  
Common Council of the City of  
Riverside December 22<sup>nd</sup>, 1912  
Attest  
City Clerk

434 A