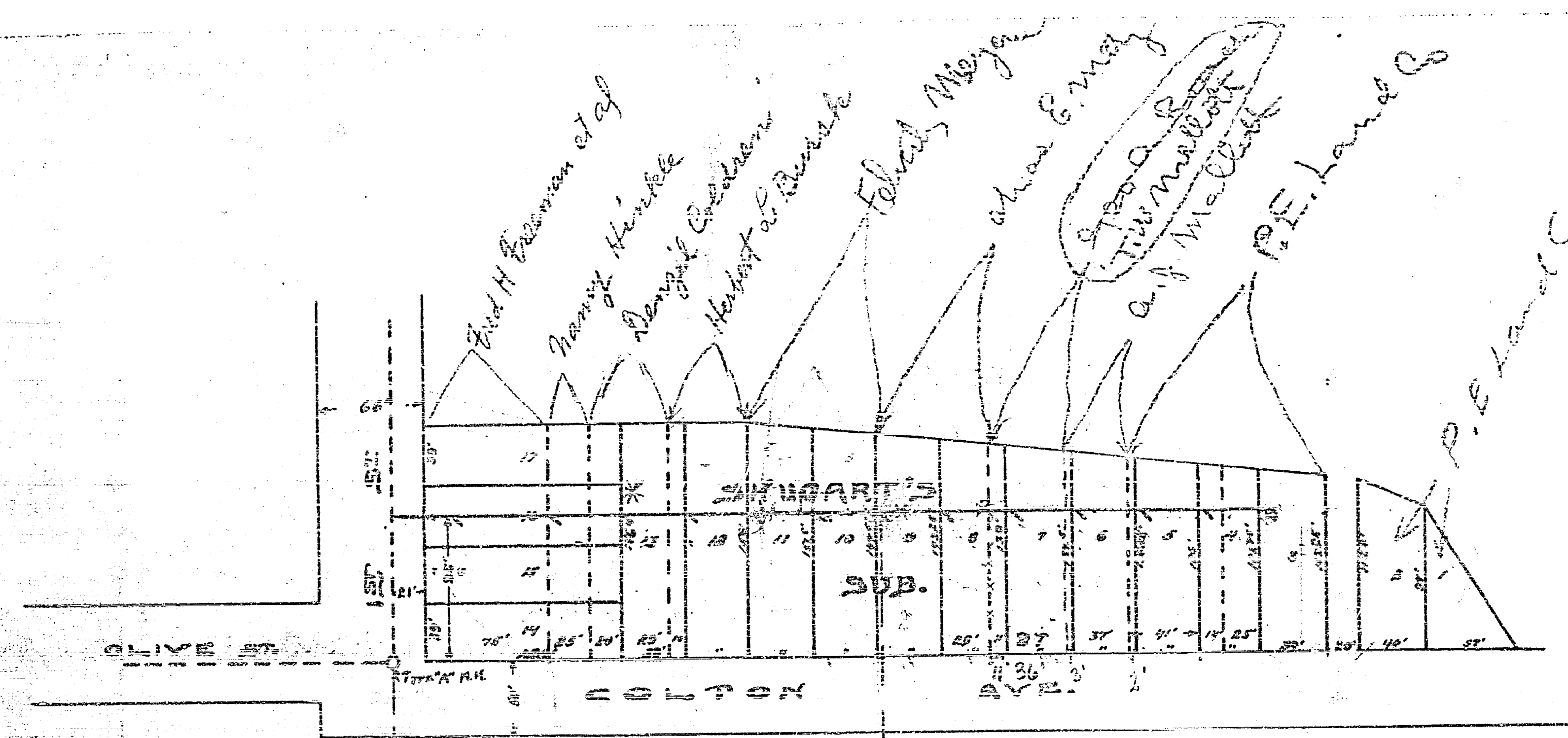


437

437

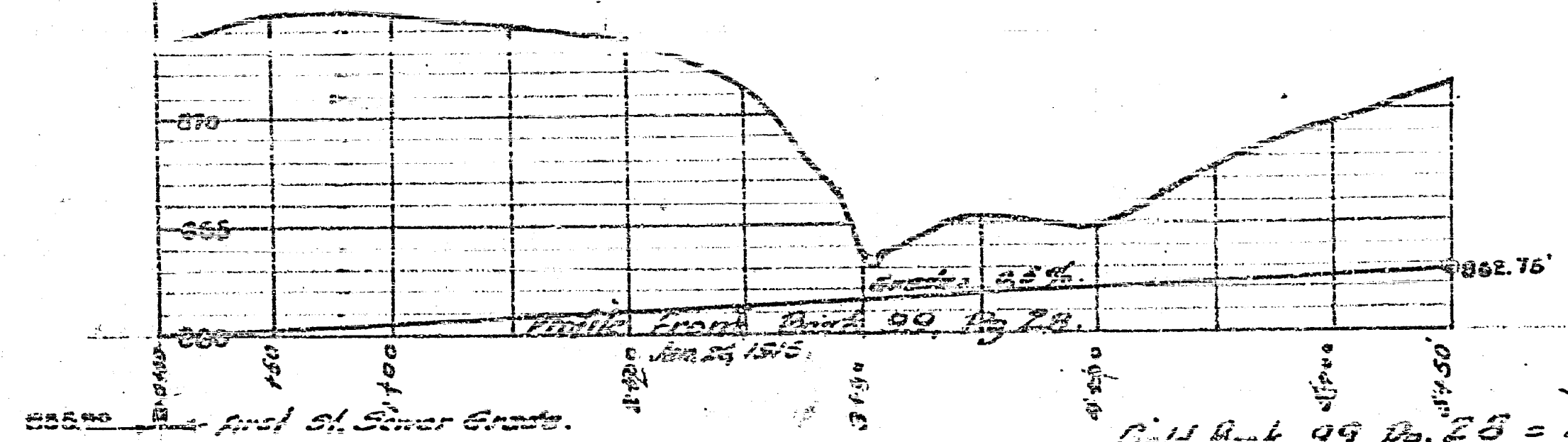
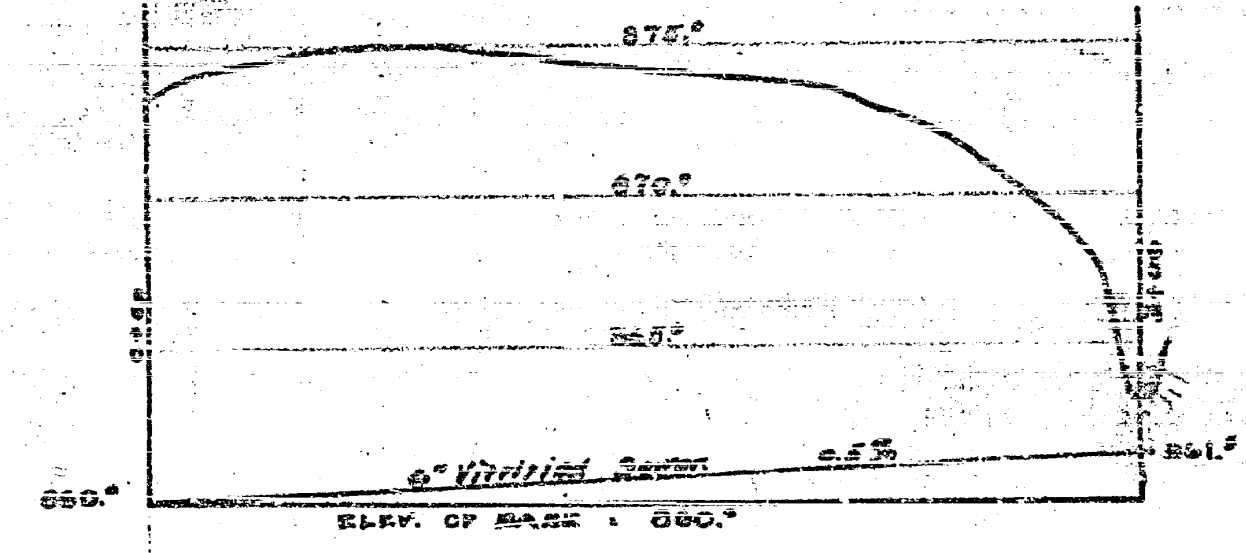


MAP SHOWING PROPOSED SEWER  
TO BE CONSTRUCTED IN  
SHUGART'S SUBDIVISION.

SCALE:  
1 INCH HOR. = 100 FT.  
1 INCH VERT. = 10 FT.

A. P. CAMPBELL,  
CITY ENGINEER.

EXPLANATION: SEWER TO BE CONSTRUCTED SHOWN THIS; ———  
SEWER ALREADY CONSTRUCTED SHOWN THIS; - - - - -



field book 99, Pg. 28 = Profile .100' W. of Cotton St.  
" 106 " 30 = New Levels & Final Grade

Adopted by the Mayor and Common Council  
of the City of Riverside May 15, 1911.

Attest: *J. D. Jacobs*  
City Clerk

437

437