

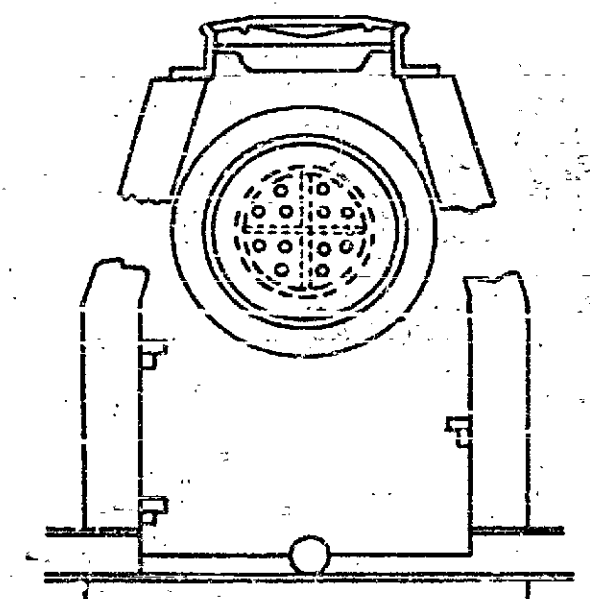
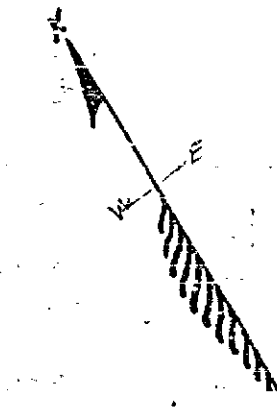
MAP SHOWING SEWER TO BE CONSTRUCTED ON

DATE ST
FROM PACHAPPA AVE. TO
VICTORIA AVE.

SCALE: 1 IN. HOR. = 60 FT.
1 IN. VERT. = 8 FT.

R. P. CAMPBELL,
City Engineer.

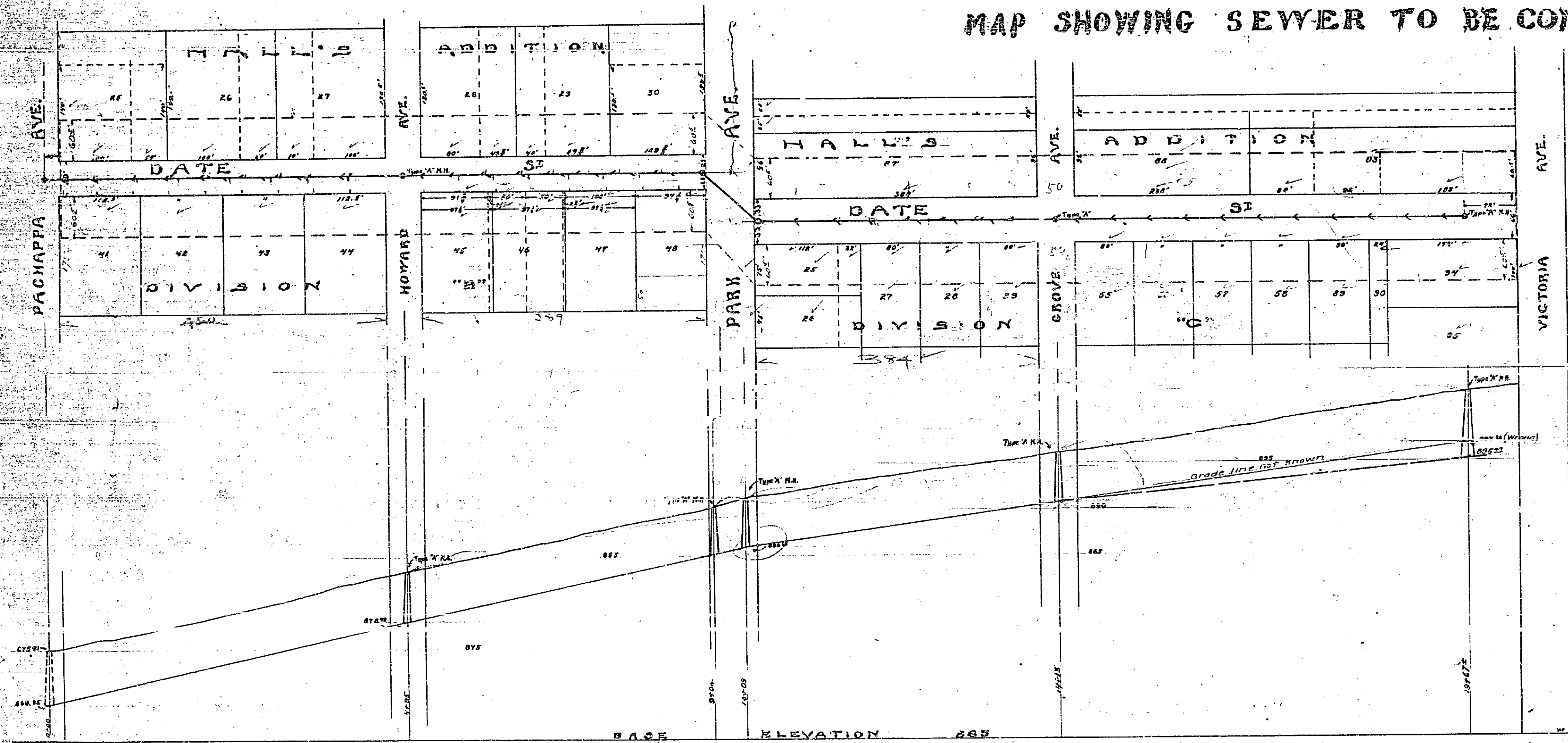
EXPLANATION: 6 inch Vitrified Sewer to be constructed is shown thus; ———
Type 'A' Manholes to be constructed are shown thus; (M) ———
Sewer constructed is shown thus; ———
Boundary of district benefited shown thus; - - - - -



CROSS-SECTION OF
TYPE 'A' MANHOLE.

Adopted by the Mayor and Common Council
of the City of Riverside May 9, 1911.
Attest: *[Signature]*
City Clerk.

446A



270
14.4
354

49

55