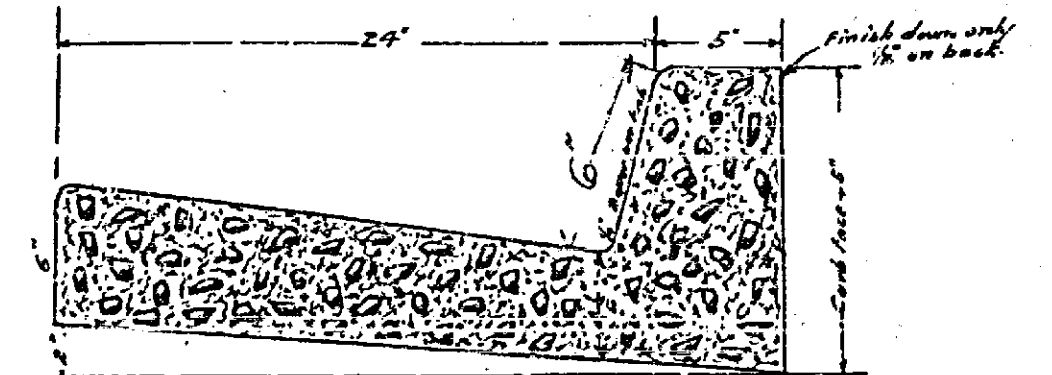


12

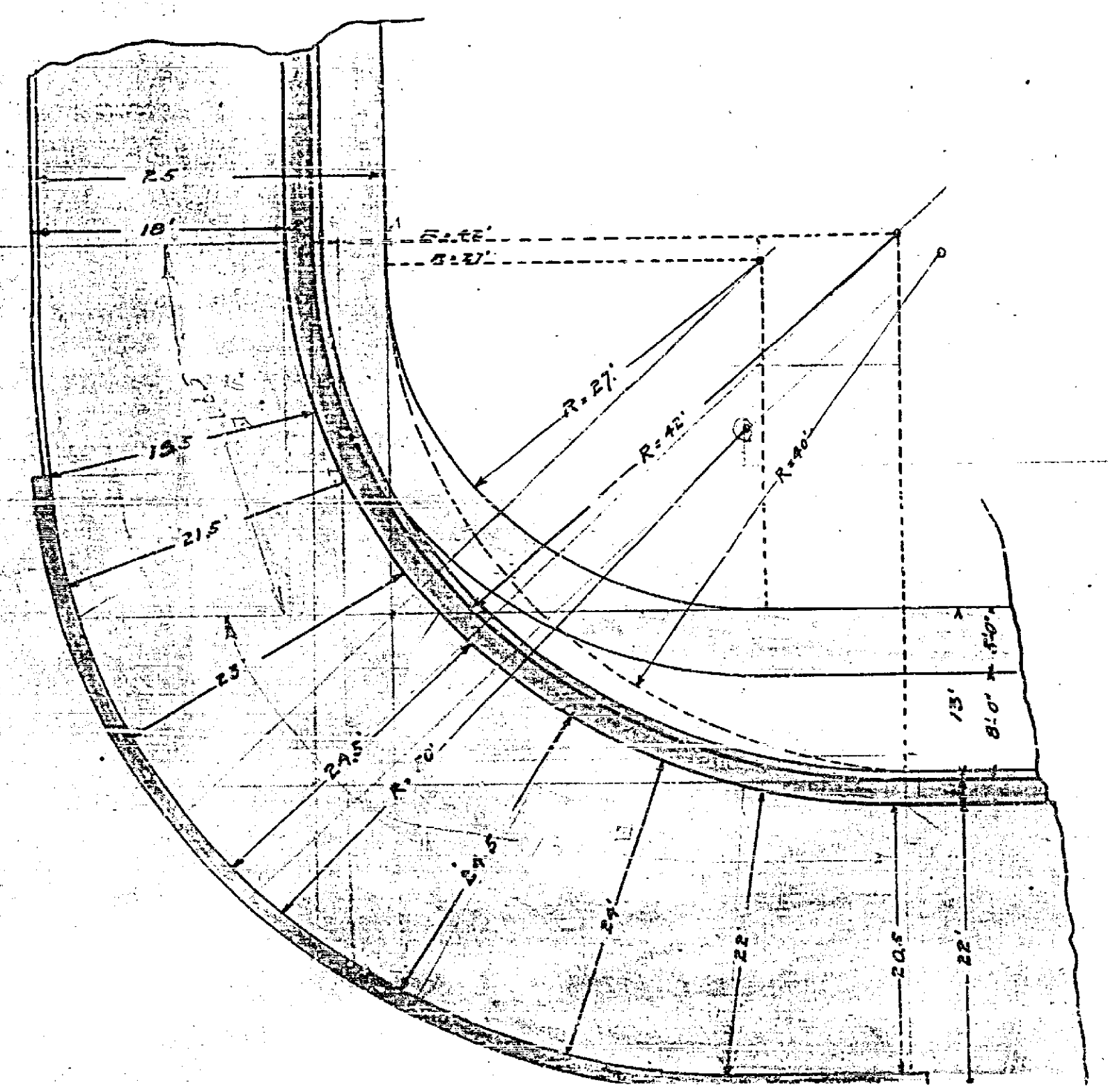
7TH STREET



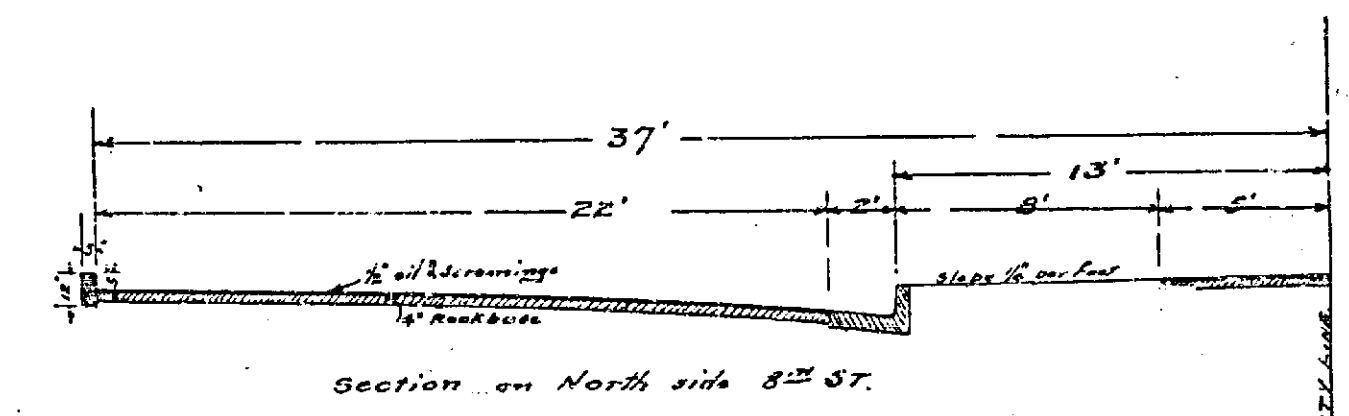
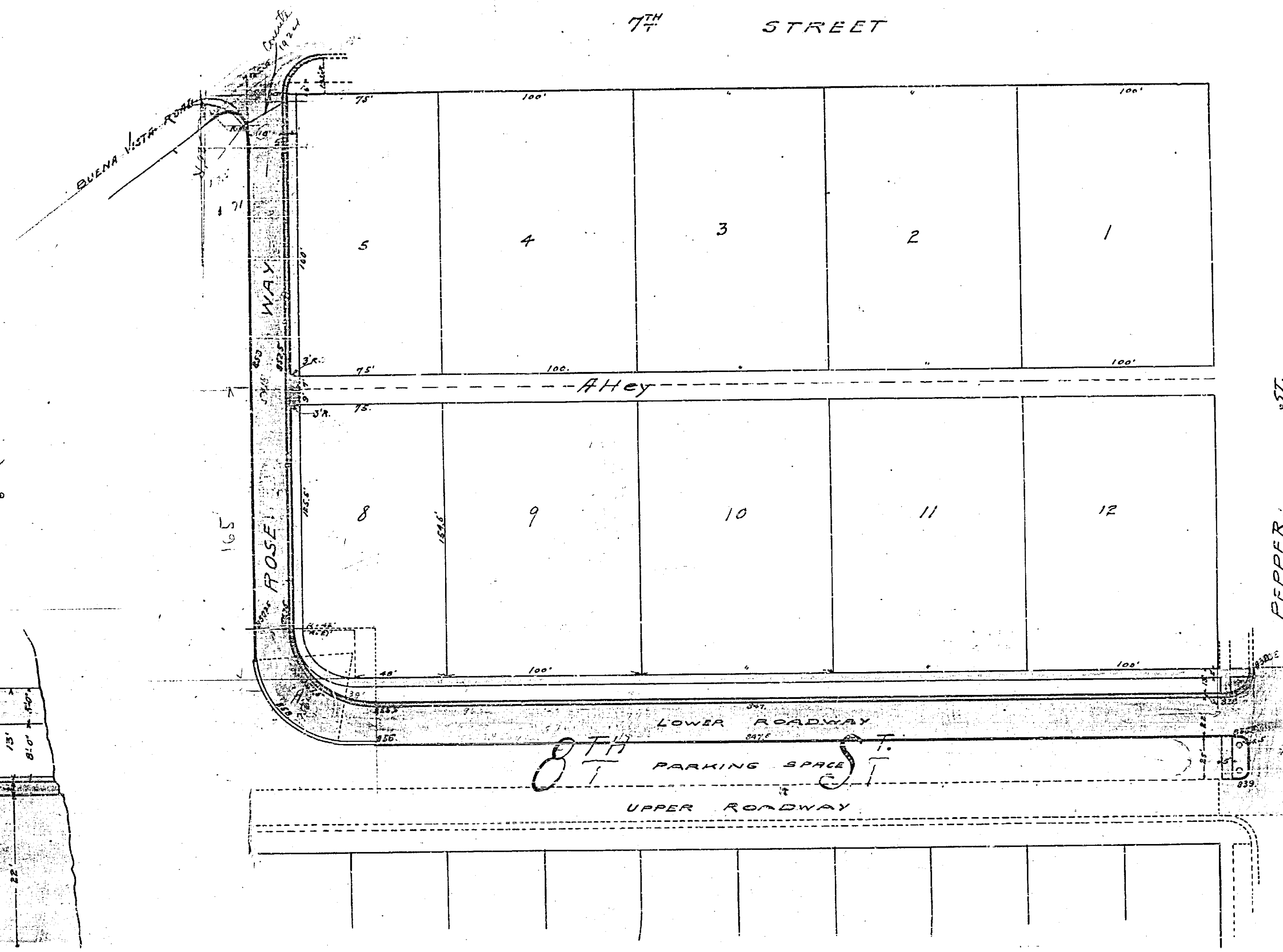
Cross-section of COMBINATION CURB & GUTTER
Proportion of materials in the concrete shall be
1 bag of cement, 2 1/2 cu feet of sand and 3 1/2 cu feet of rock

Improvements to be made on 8TH St and Roseway are shown on this map
as follows:
Cement sidewalk to be constructed is shown thus [line with cross-hatching]
Combination Curb & Gutter [line with diagonal hatching]
Revised Curb [line with horizontal hatching]
Macadam Roadway [line with vertical hatching]
Alley entrance to be constructed [line with dots]

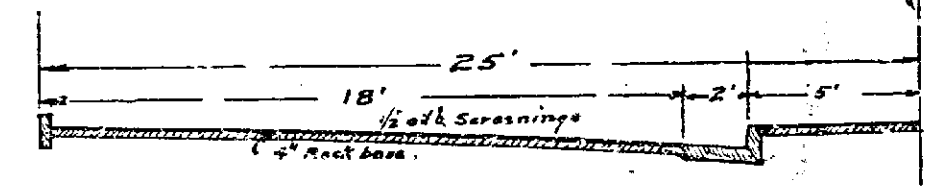
8 1/2"	8 1/2"
8 1/2"	8 1/2"
8 1/2"	8 1/2"
8 1/2"	8 1/2"
8 1/2"	8 1/2"
8 1/2"	8 1/2"
8 1/2"	8 1/2"
8 1/2"	8 1/2"
8 1/2"	8 1/2"
8 1/2"	8 1/2"
8 1/2"	8 1/2"
8 1/2"	8 1/2"



Detail of 9'
1 1/2" = 10'

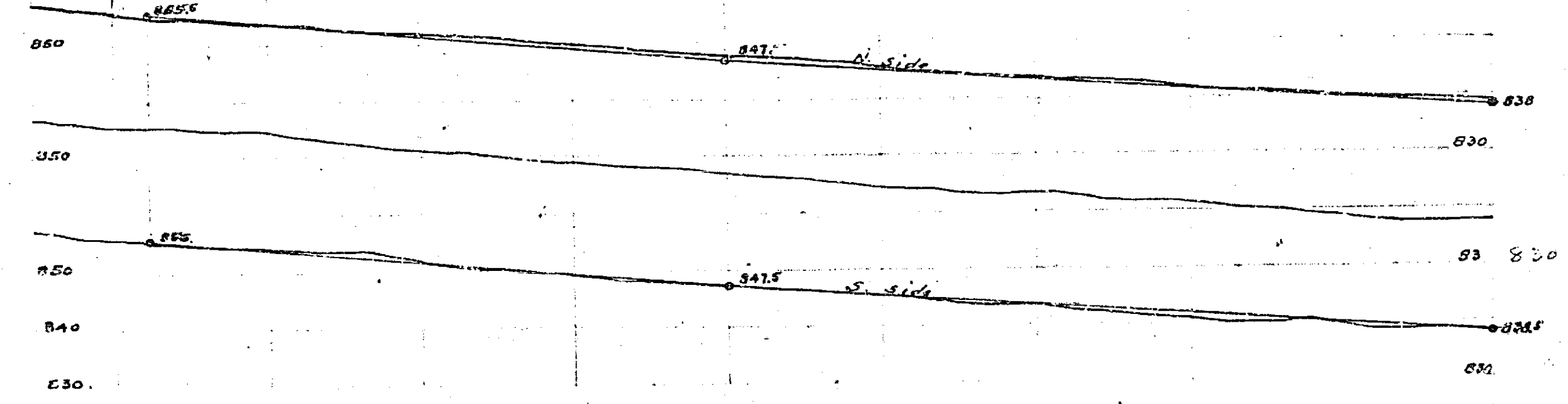
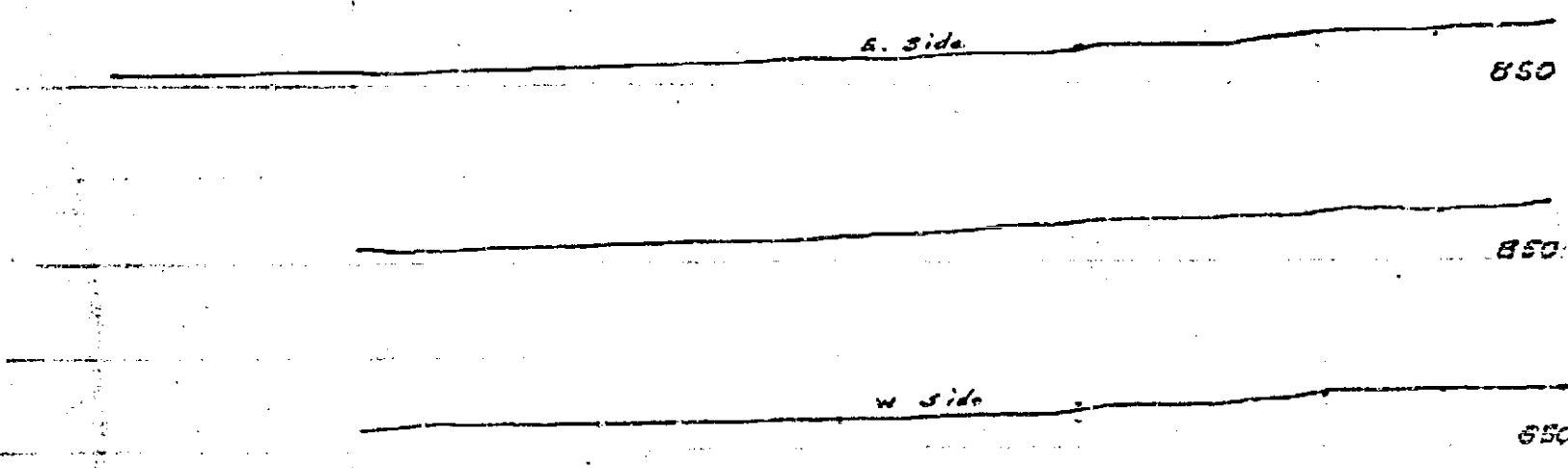


Section on North side 8TH ST.



Section on Roseway

Adopted by The Mayor and Common
Council of the City of Riverside on
this 14TH day of May 1912
H. West City Clerk.



CITY OF RIVERSIDE
Proposed Improvement
of
8TH St and Roseway
From Pepper St to 7TH ST.
Scale of Plan 1" = 40'
Scale of Profile 1/4" = 10'
Vert 1" = 2'

R.P. Campbell
CIVIL ENGINEER
Drawn by G.D.

452

12

12