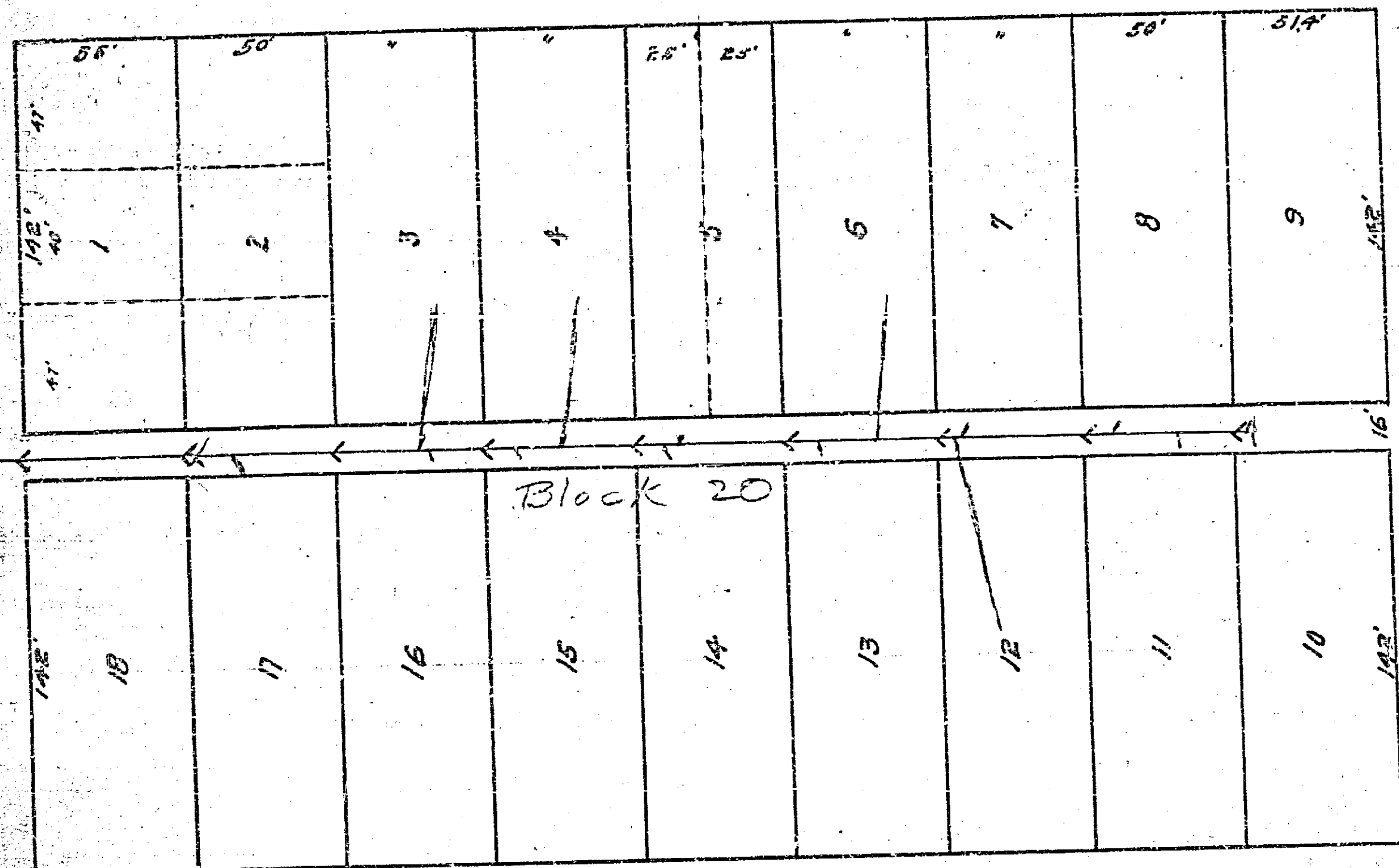


PIERCE ST.

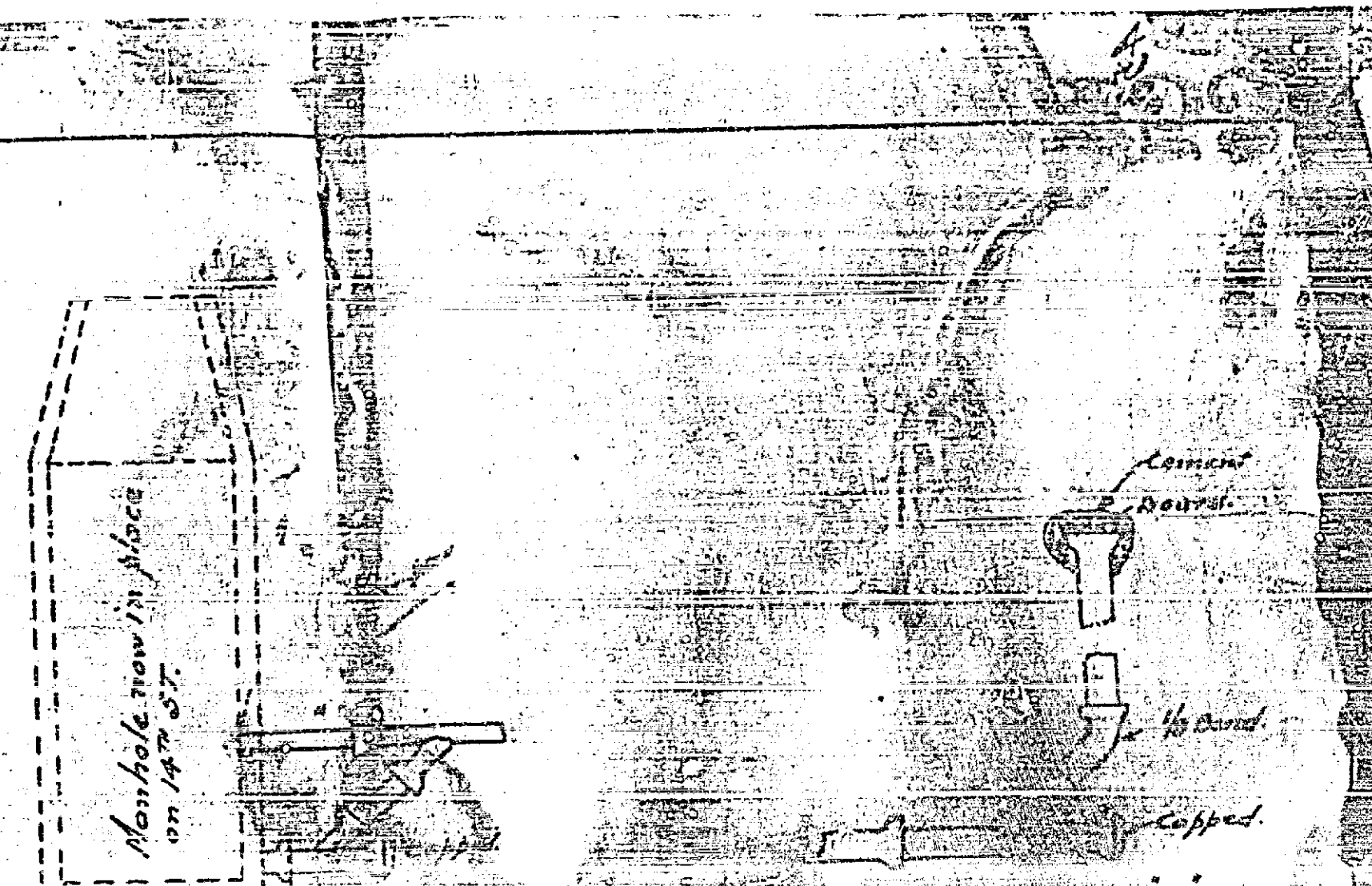


Block 20

GROVE AVE.

ST.

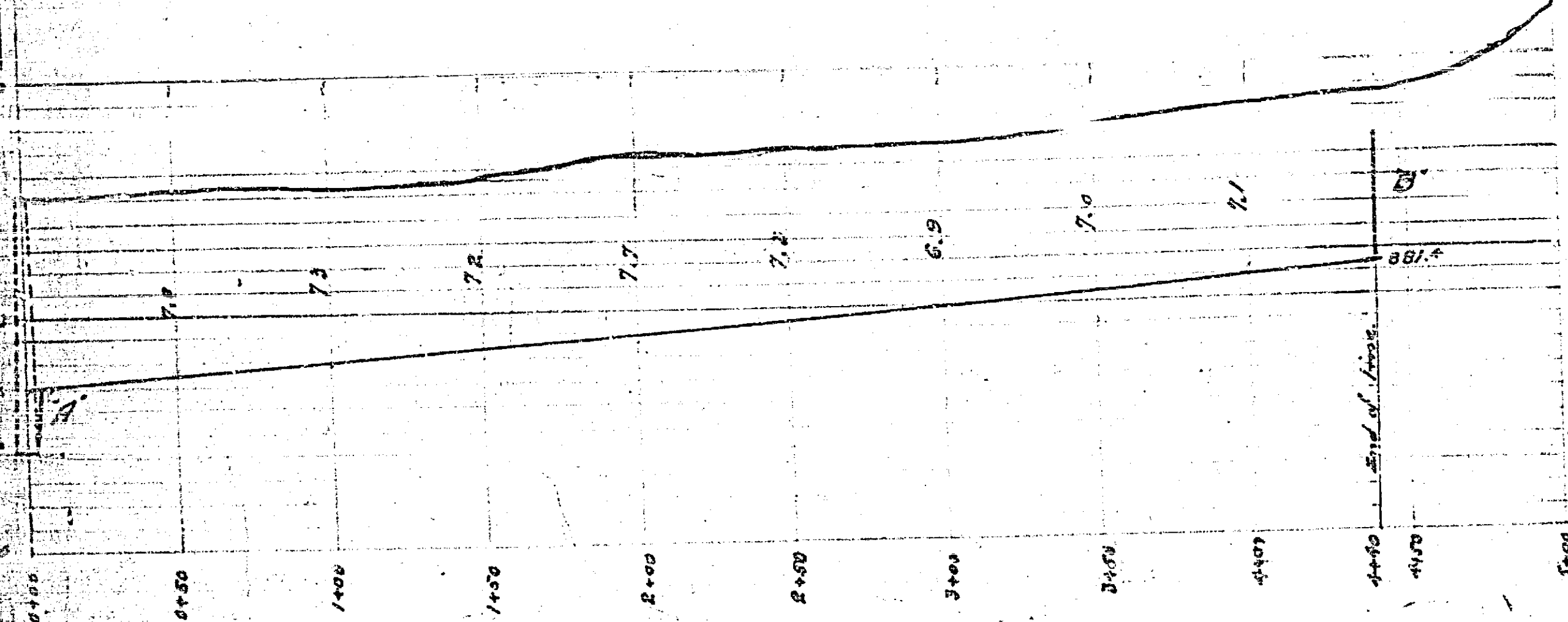
COTTAGE



Detail at A

Adopted by the Mayor and Common Council of the City of Riverside July 3, 1912

City Clerk



CITY OF RIVERSIDE
MAP
 Showing sewer to be constructed on
 Alley in Block 20 South E. Street
 H.P. Campbell
 Civil Engineer
 July 1912

453