

PLAN AND PROFILE  
 NO. 455  
 FOR THE CONSTRUCTION OF A  
 SANITARY SEWER IN  
**POPLAR AVENUE**  
 BETWEEN LIME AND MULBERRY STREETS  
 CITY OF RIVERSIDE

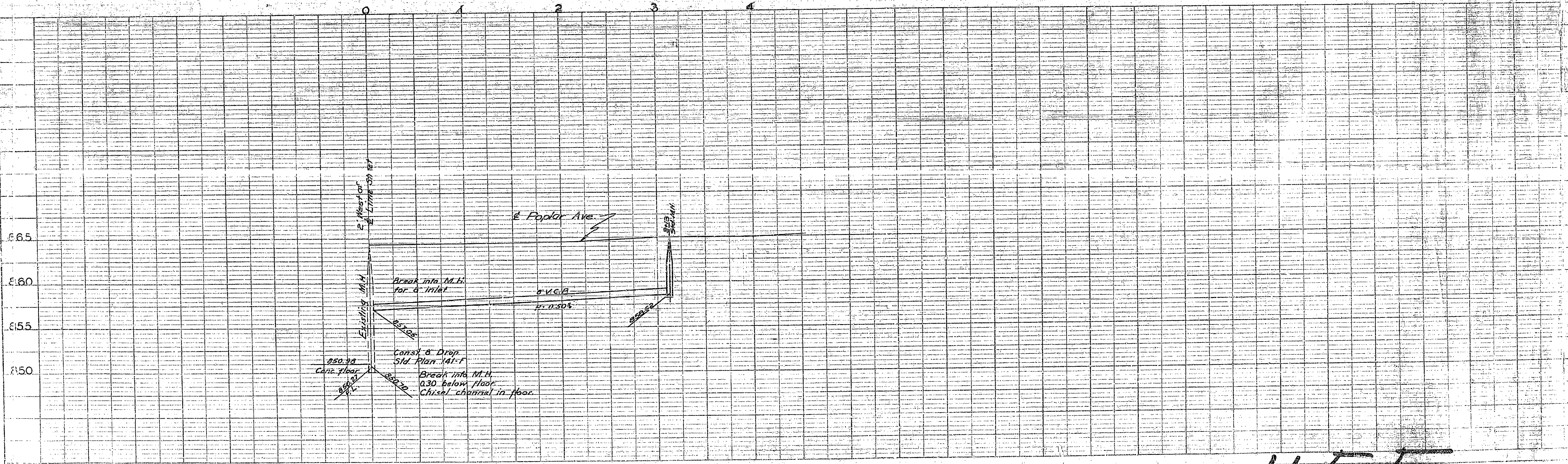
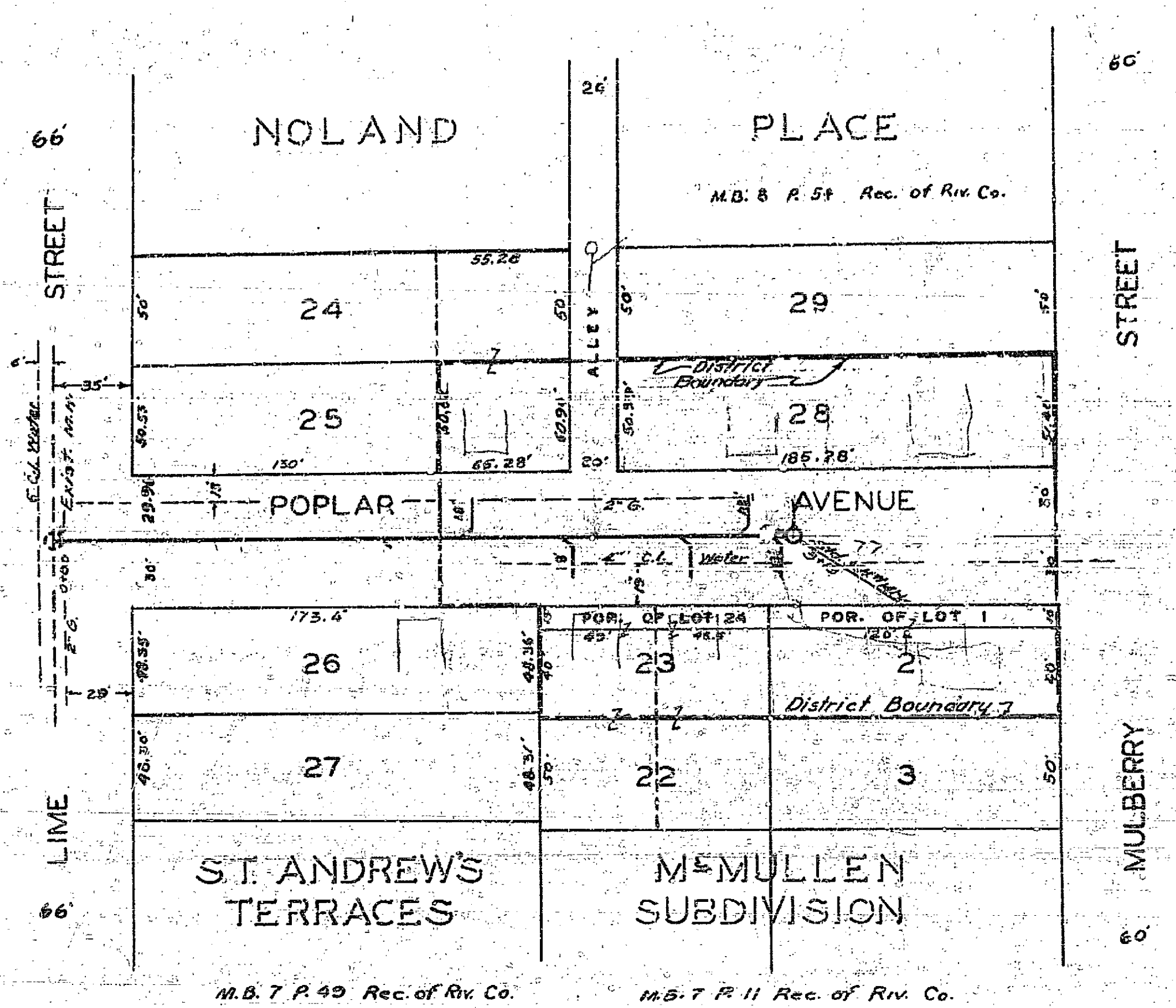
FB. 449/54

SCALE: HORIZ. 1" = 60'  
 VERT. 1" = 5'

APPROVED *M. H. Irvine*  
 M.H. IRVINE REG. C.E. NO. 3011  
 CITY ENGINEER

THIS PLAN APPROVED AND ADOPTED BY  
 THE MAYOR AND COUNCIL OF THE CITY  
 OF RIVERSIDE, STATE OF CALIFORNIA  
 ON THIS 21<sup>st</sup> DAY OF Aug. 1952

*W. J. ...*  
 CITY CLERK



455