

DESIGNED BY	W.C. MCGUIRE
CHECKED BY	H.M.G.
DATE	5/22
PROJECT NO.	456A
SCALE	1"=40'
TITLE	CASTLEMAN ST. IMPROVEMENTS
NO.	1
TOTAL SHEETS	2
FIELD BOOKS	
APPROVED BY	

Scale 1"=40'

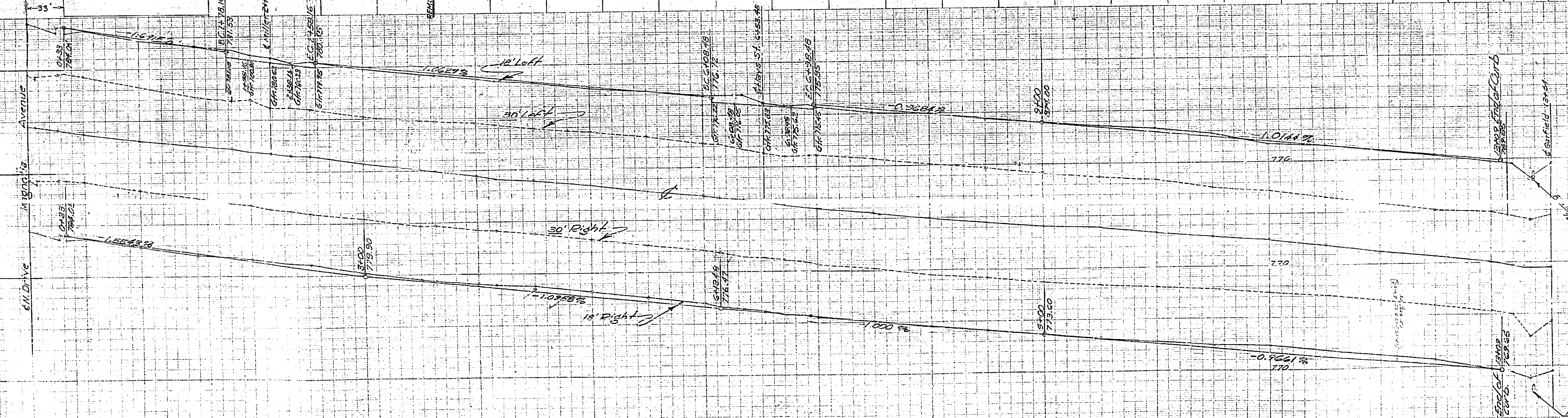
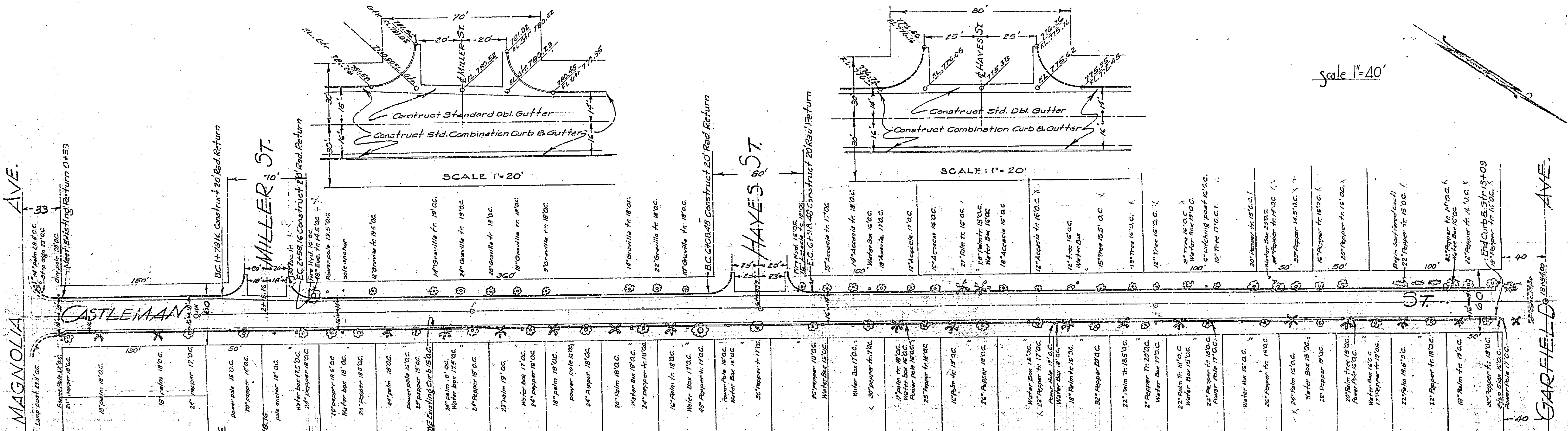
MAGNOLIA AVE.

CASTLEMAN ST.

MILLER ST.

HAYES ST.

GARFIELD AVE.



456A