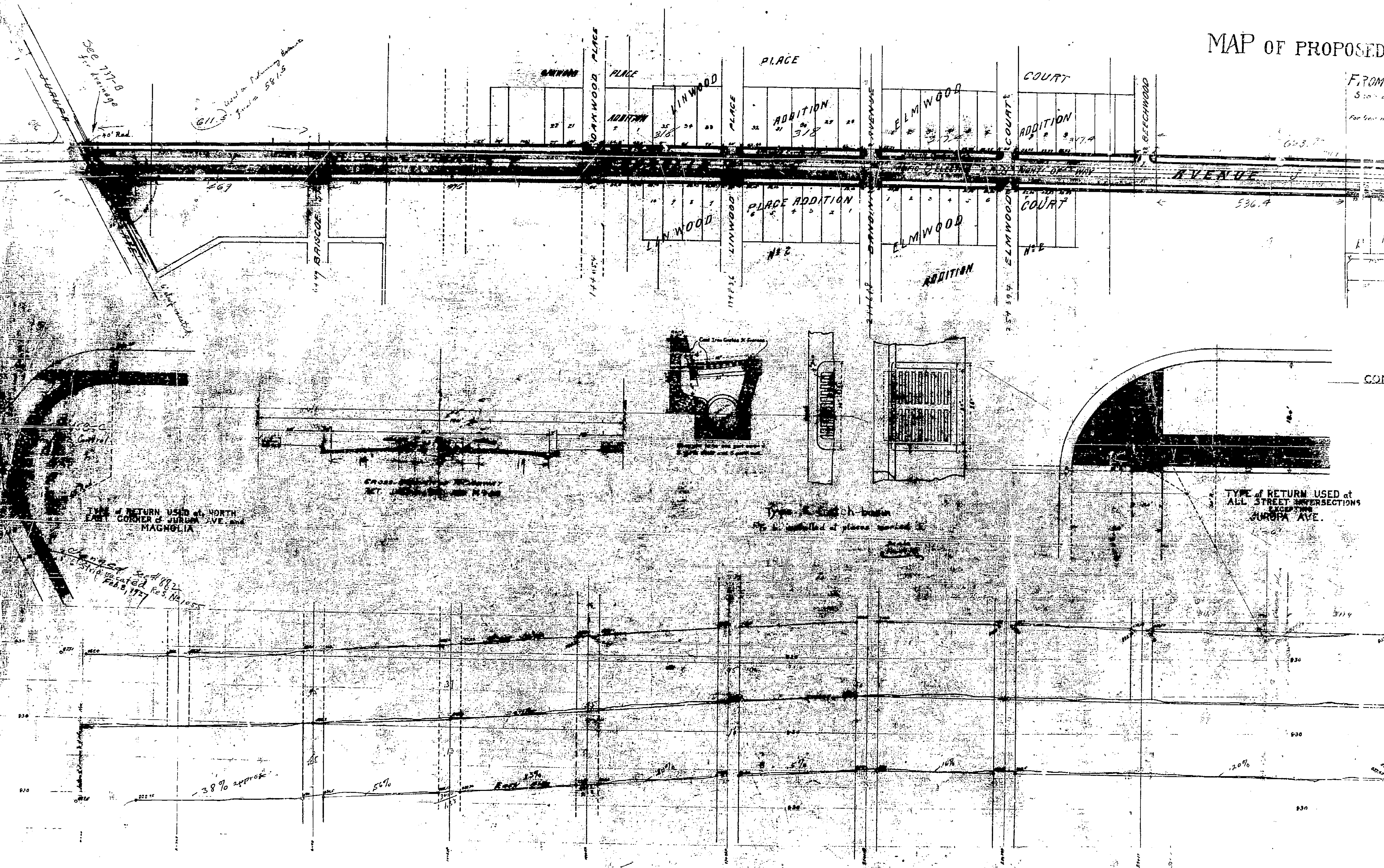


MAP OF PROPOSED IMPROVEMENTS

FROM THE
Scale of Plan
Profile
For best notes see 11



See 777-B
40' Rad.
Used in Preliminary Estimate
611.5
Grade = 587.8

TYPE of RETURN USED at
EAST CORNER of JURUPA AVE. and
MAGNOLIA

Changed Sept 1922
to STIP vacated Feb 8, 1927

CROSS SECTION of ROADWAY
AT INTERSECTION OF ST. AVE.

Type A Street Section
to be installed at places marked X

TYPE of RETURN USED at
ALL STREET INTERSECTIONS
EXCEPTING
JURUPA AVE.

3.8% approx

5.6%

5.7%

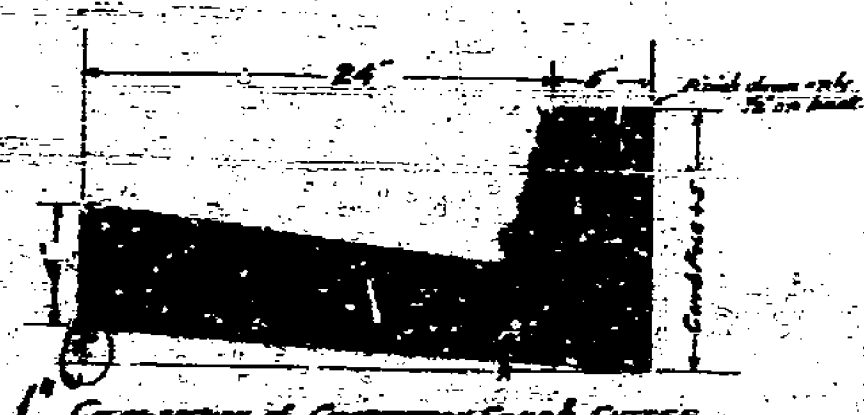
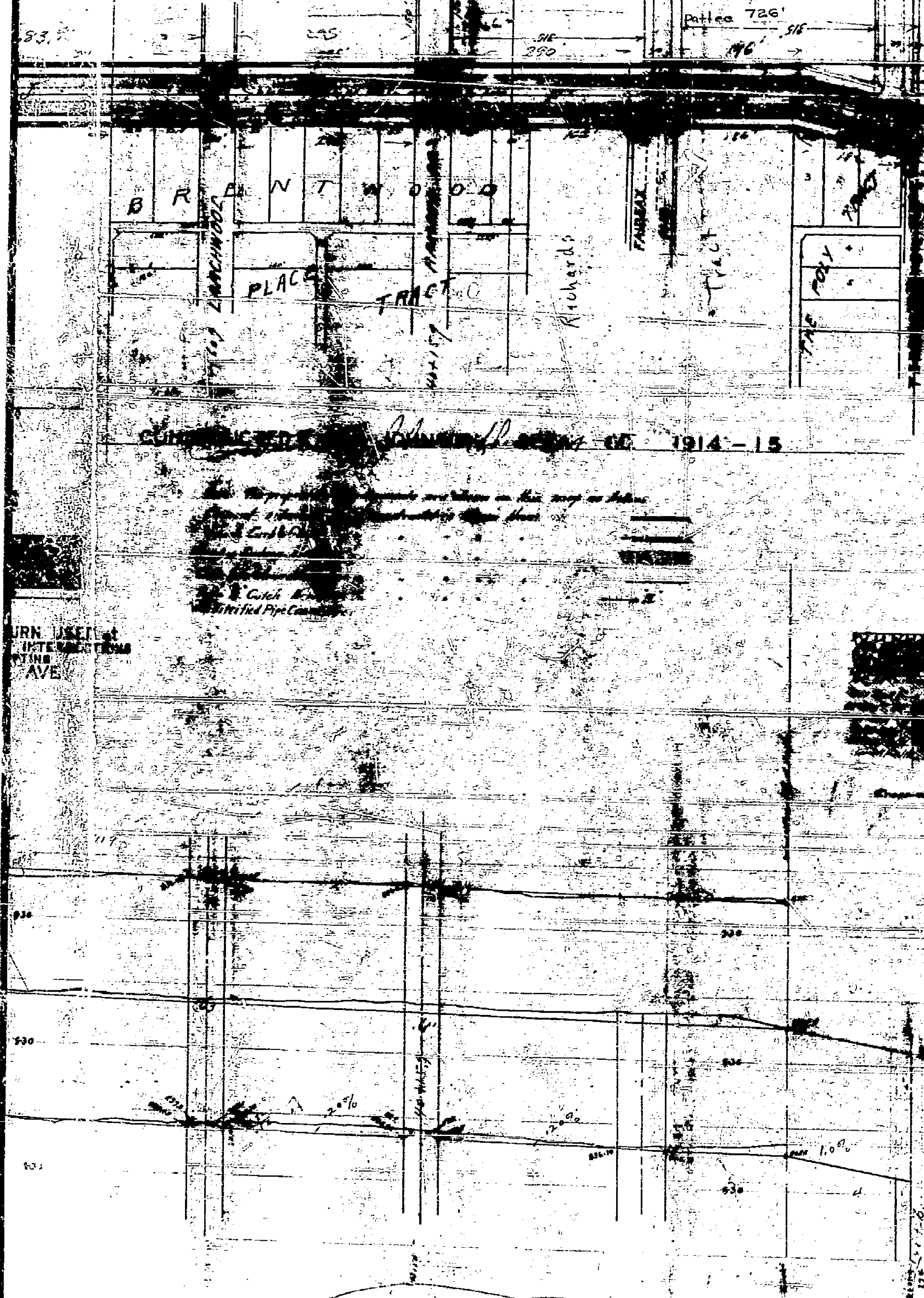
2.0%

649
15
534

PROPOSED IMPROVEMENTS ON MAGNOLIA AVENUE

FROM TERRACINA DR. TO JURUPA AVE

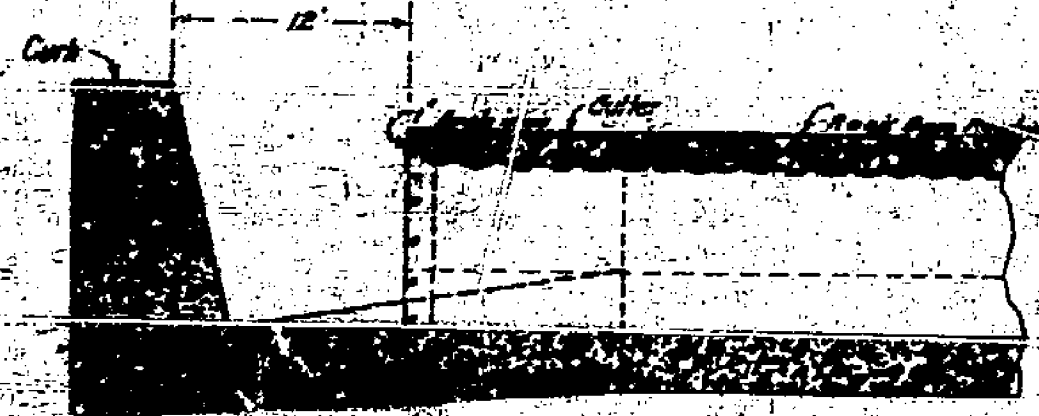
Scale of Plan 1"=100 FT.
 Profile - Ver. 1"=100 FT.
 Plan 1"=100 FT.
 For field notes see Book 33 Page 48



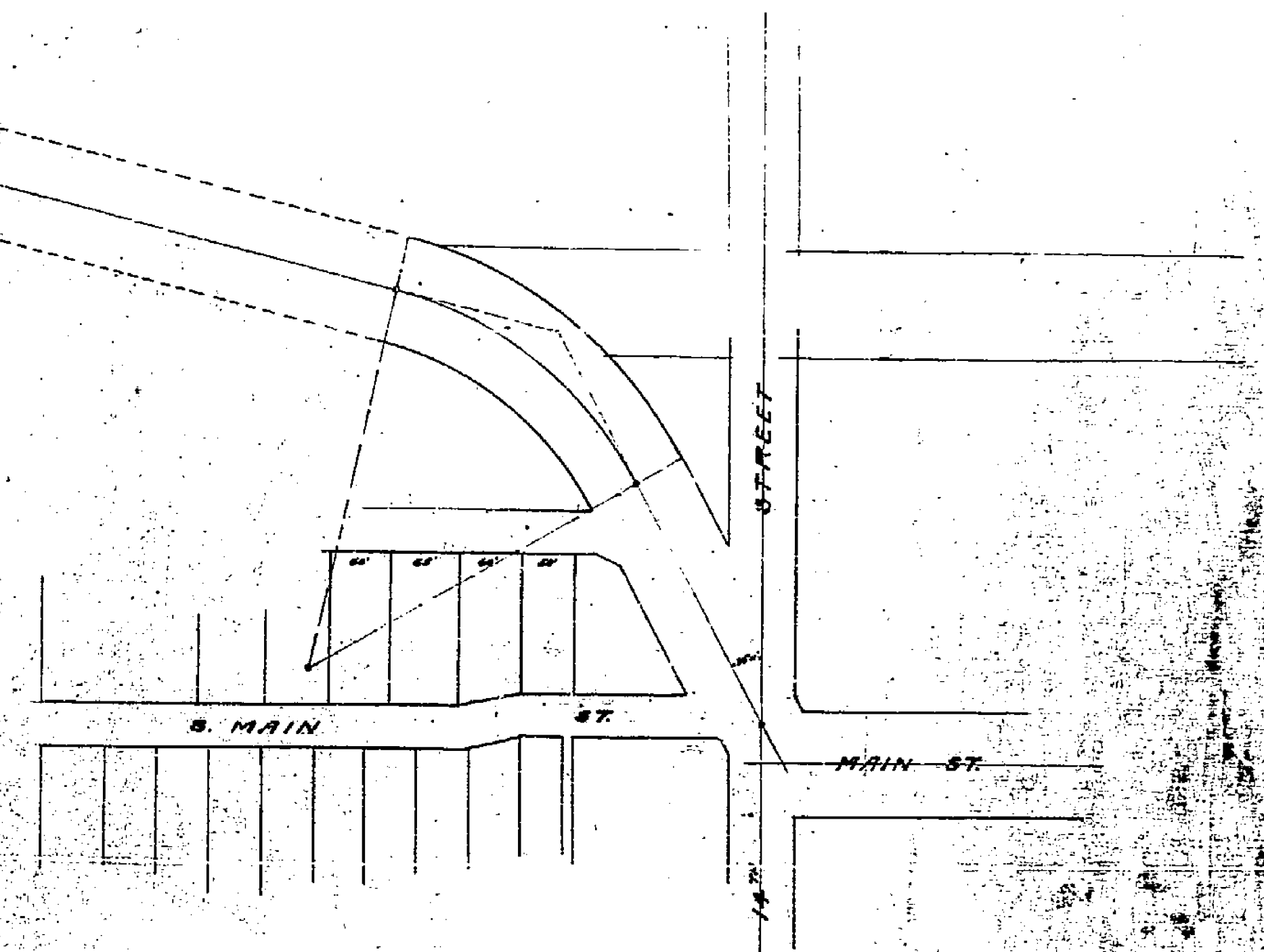
Cross-section of Concrete Curb, Center
 Proportions of concrete in the concrete shall be 1 part cement, 2 1/2 parts sand and 3 1/2 parts rock.



Cross-section of Culvert

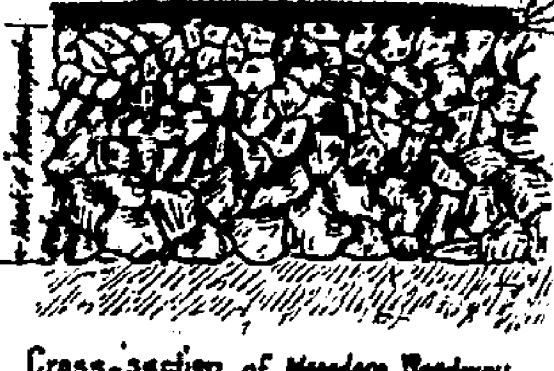


Longitudinal section through center
DETAIL OF GALVANIZED CORRUGATED IRON CULVERTS



Approved by the Mayor & Common Council of the City of Riverside, Cal. March 25, 1914.
 Attest *[Signature]*
 City Clerk.

READOPTED By The Mayor & Common Council of The City of Riverside Calif. May 19, 1914.
 Attest *[Signature]*
 City Clerk.



Cross-section of Mandarin Roadway

Rock shall be from 2' to 3' crusher run rock