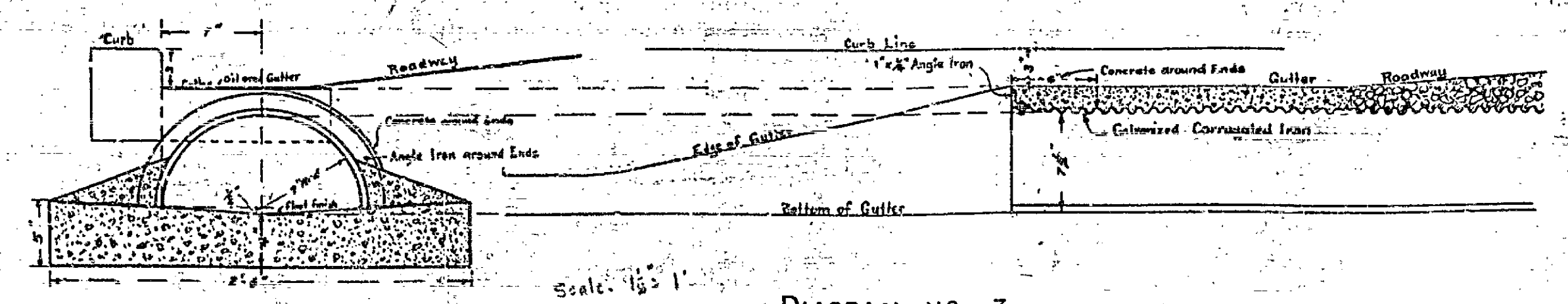
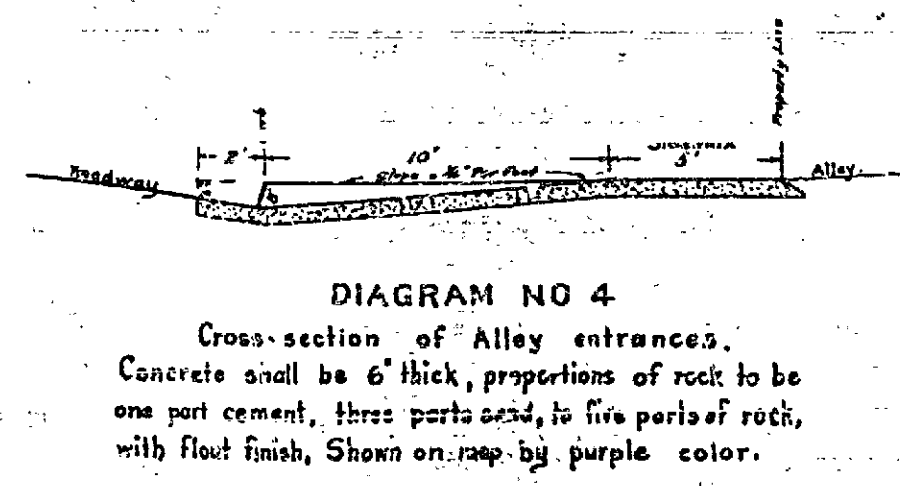
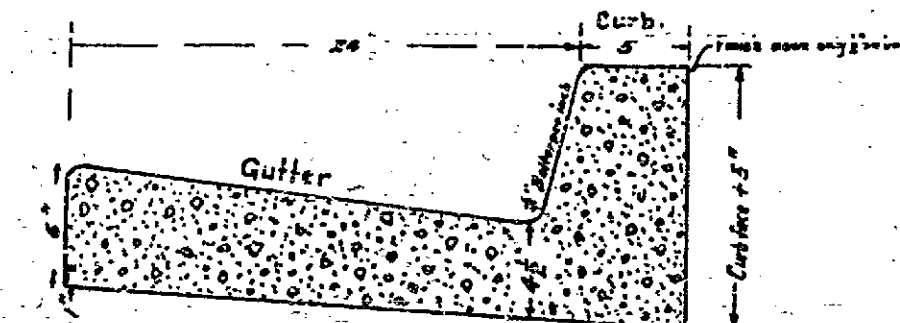
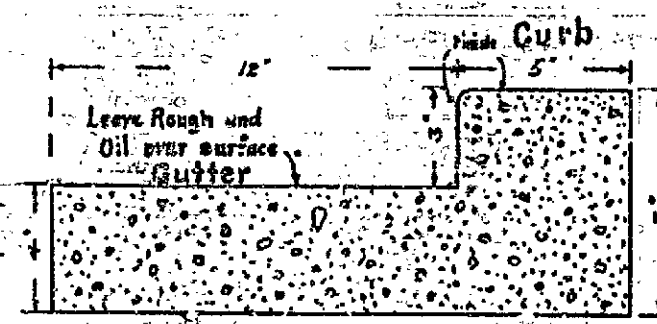
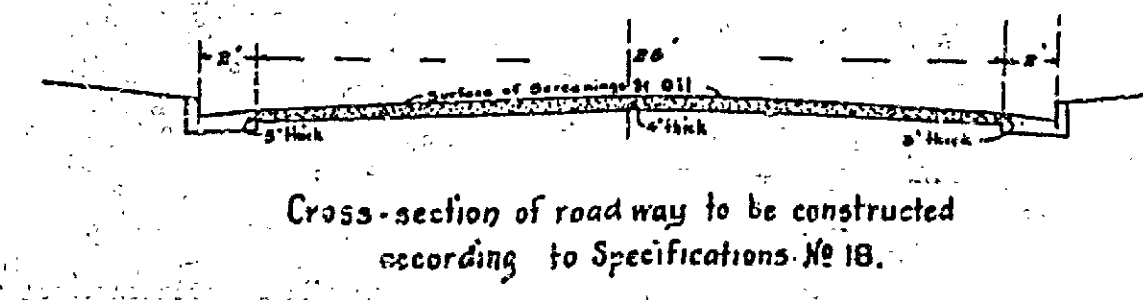


MAP SHOWING IMPROVEMENTS TO BE MADE IN THE BRENTWOOD PLACE TRACT

SCALE - 1 INCH = 50 FEET.

A.P. CAMPBELL City Engineer.

NOTE: Profiles of these streets are found on Profile No. 463-A



Note: Decomposed granite roadway to be constructed, using Red Granite, according to Specifications No. 18 shown thus:

Cement sidewalk to be constructed according to Specifications No. 21 is shown thus:

Combination Curb & Gutter to be constructed according to specifications No. 22 and 23 is shown thus: for intersections as shown, remainder,

Parking space to be graded as shown on the map.

Concrete Alley Entrances are shown thus:

Galvanized Corrugated Iron Culverts are shown thus:

Adopted by the Mayor and Common Council of the City of Riverside this 26th day of November, 1912.
Attest *J.B. Carter* City Clerk.