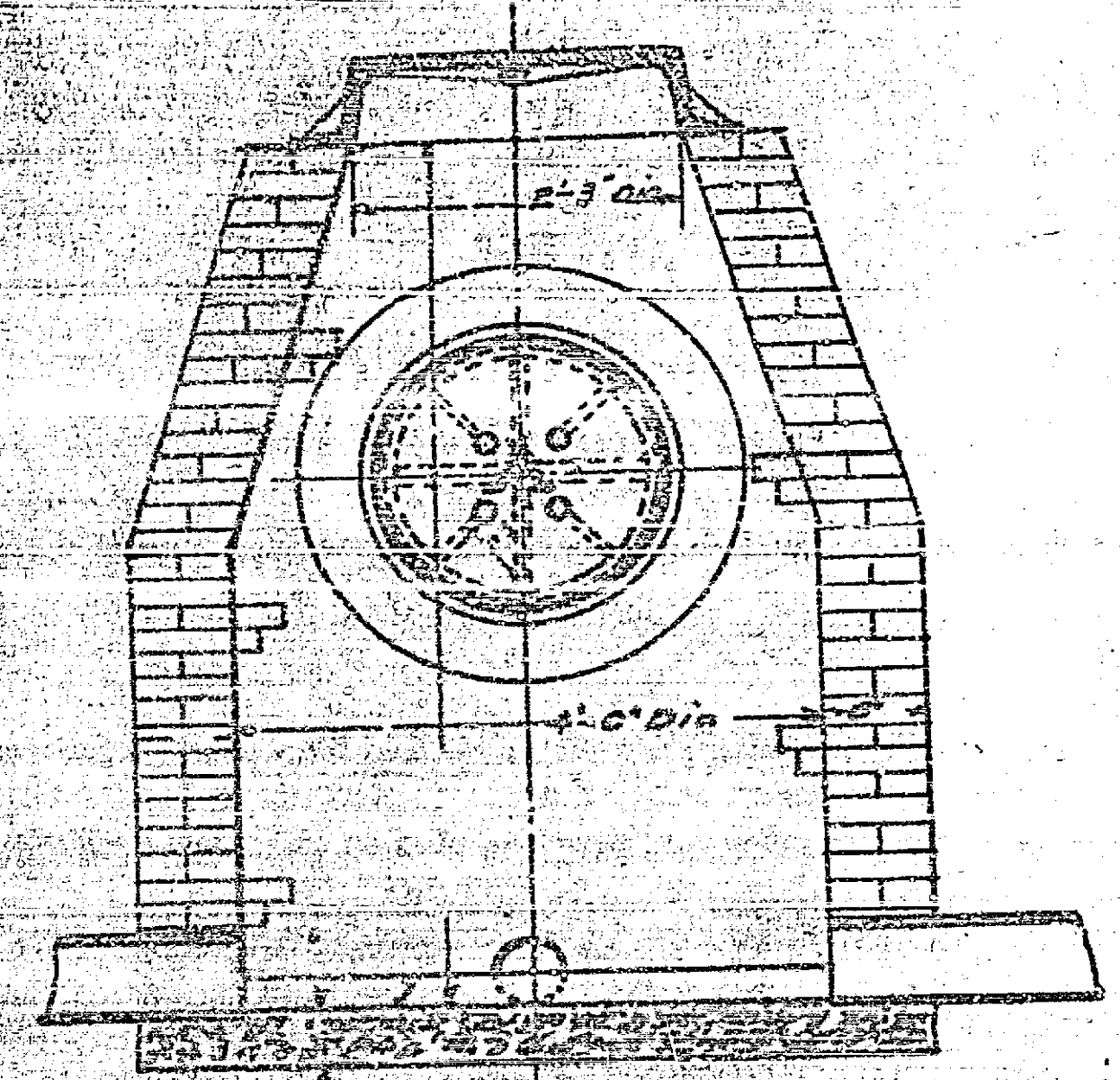
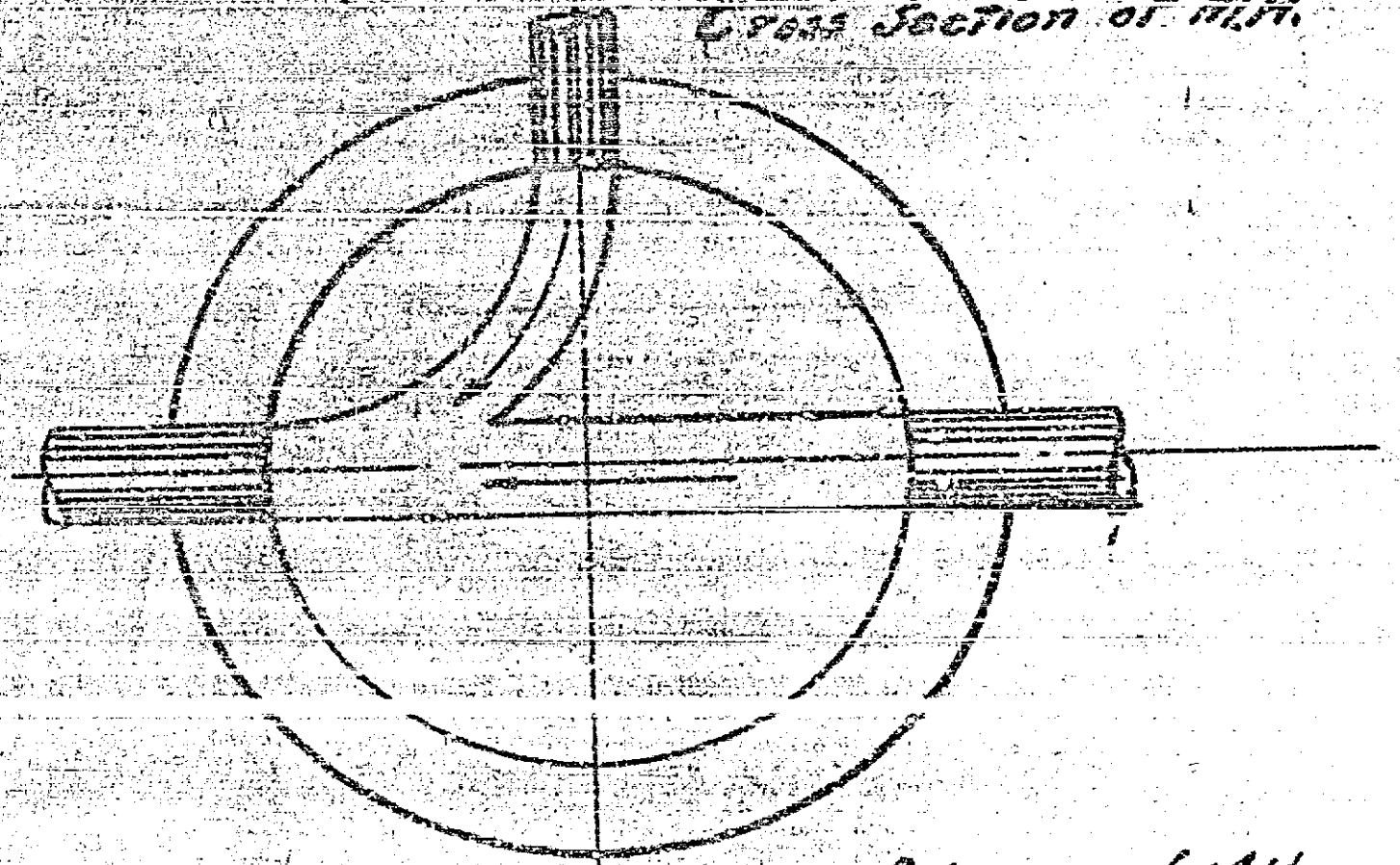


Type A Manhole  
For construction see Specifications No. 16



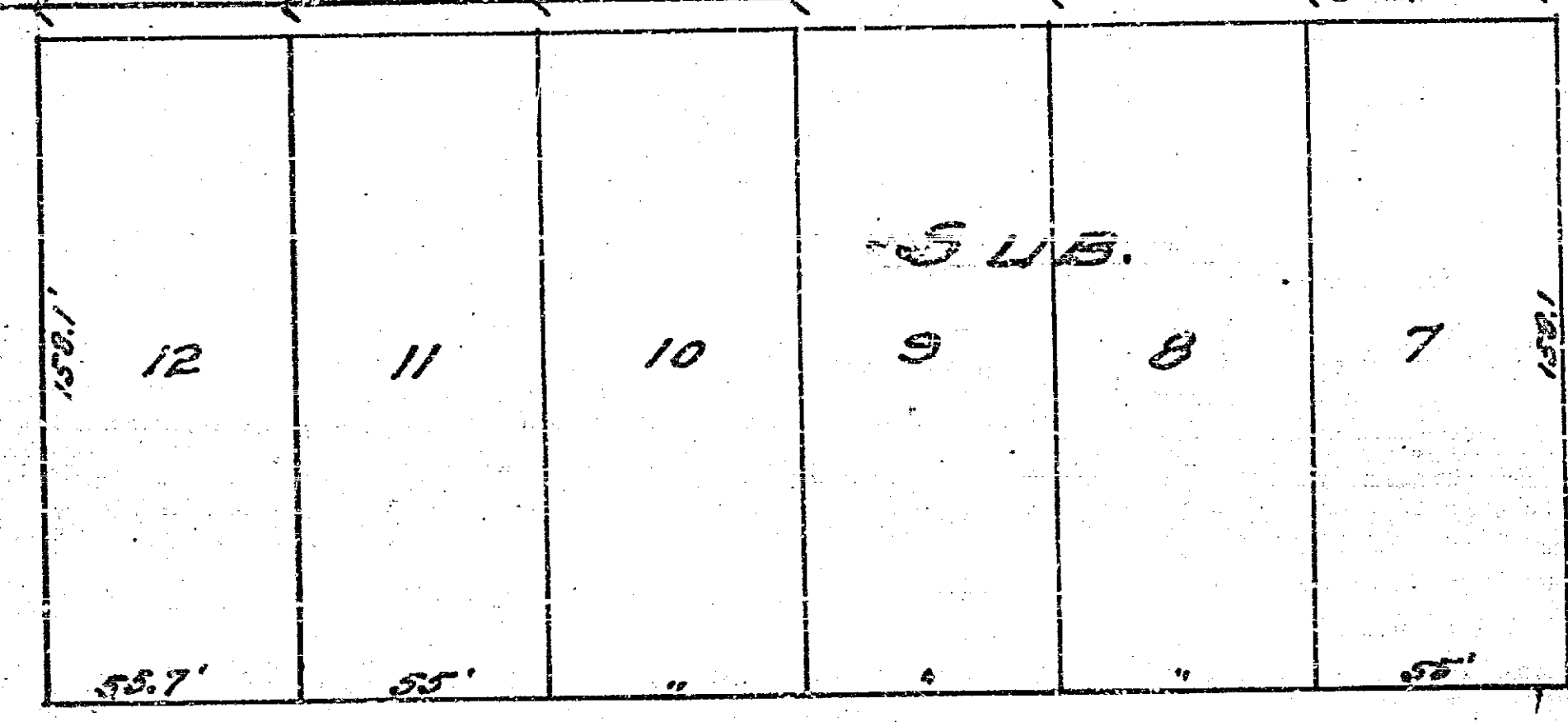
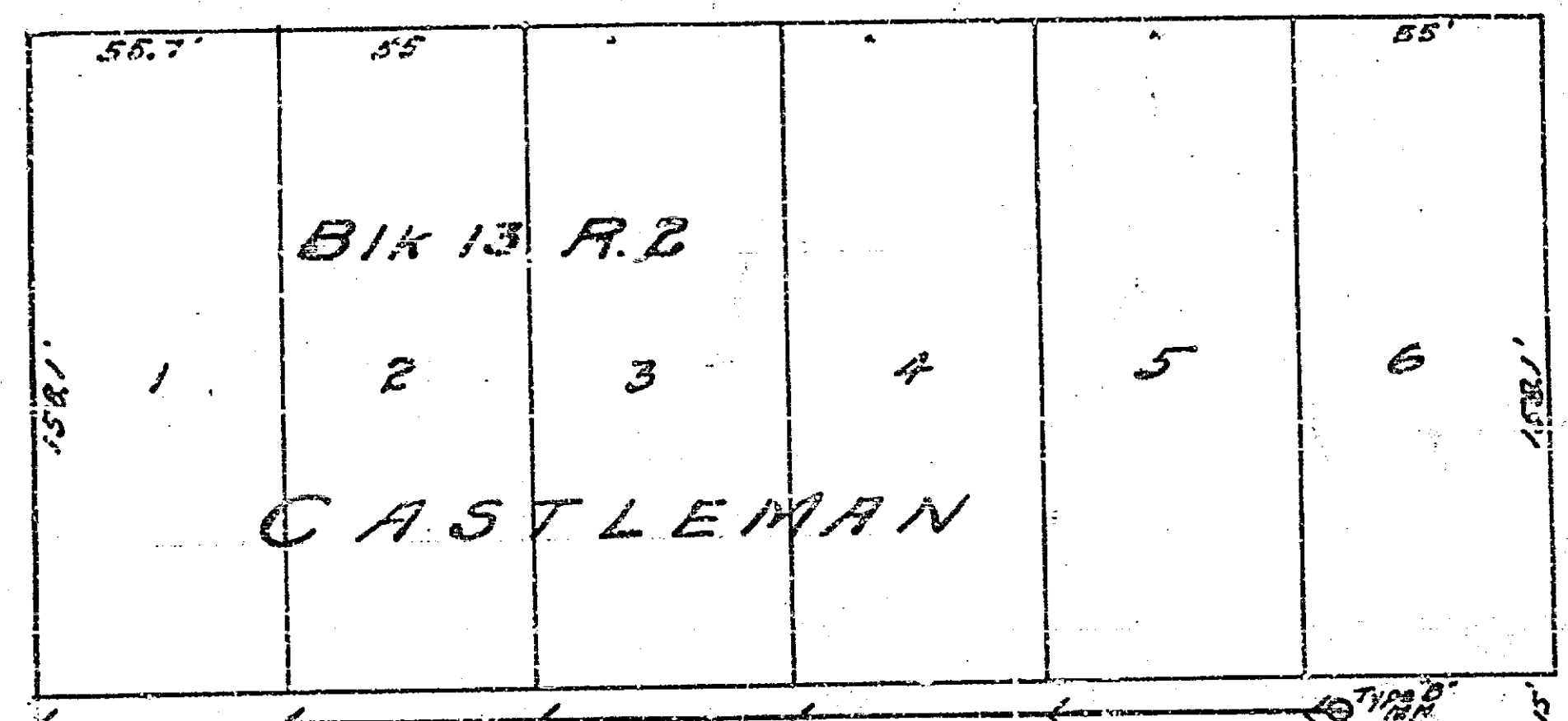
Cross Section of M.H.



Plan of bottom of M.H.

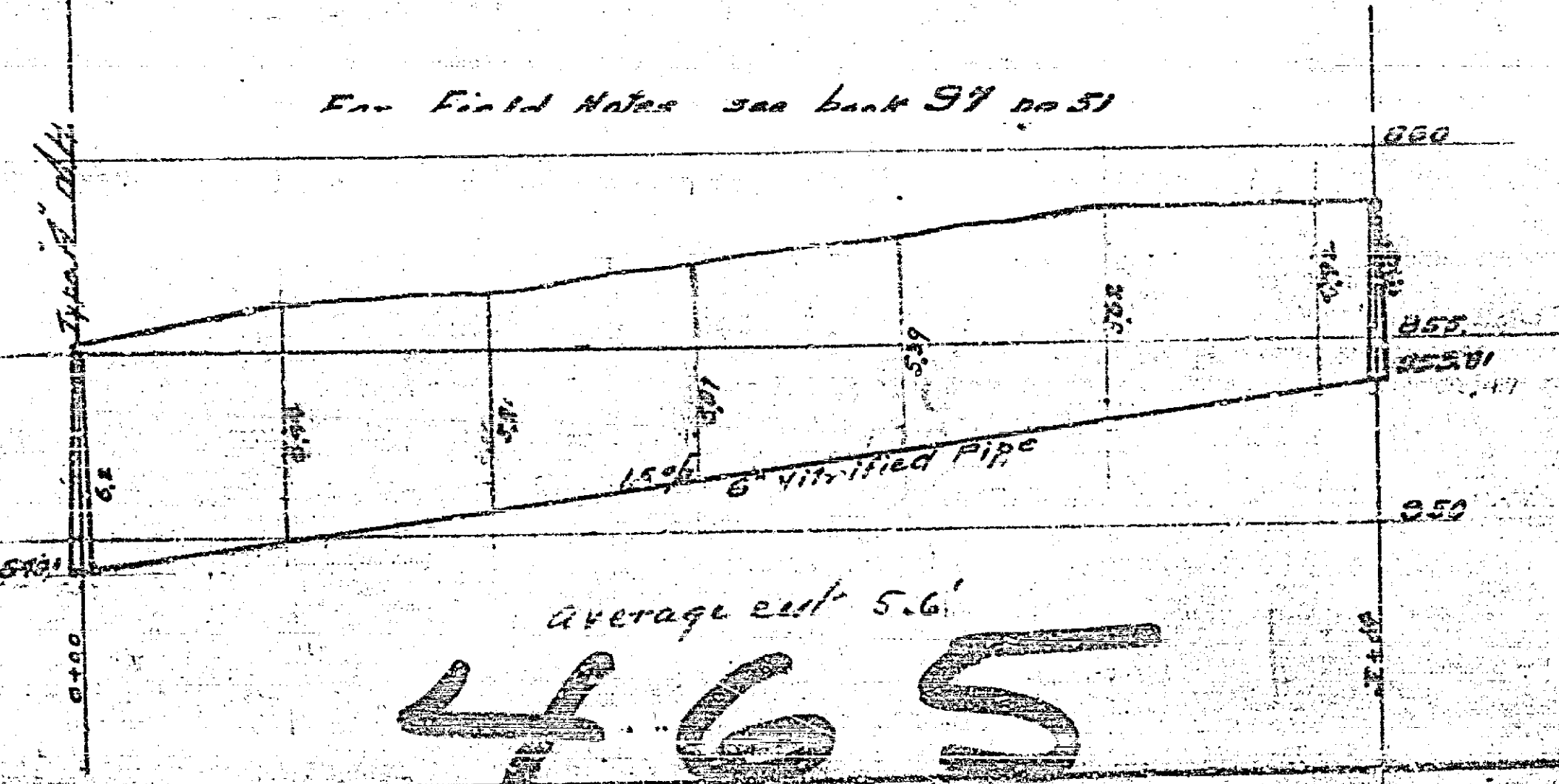
Material Required  
1 Type A Manhole  
1 Type B Manhole  
375 Ft. 6" Vitrified Sewer pipe  
including 12' 6" manhole

THIRTEENTH ST.



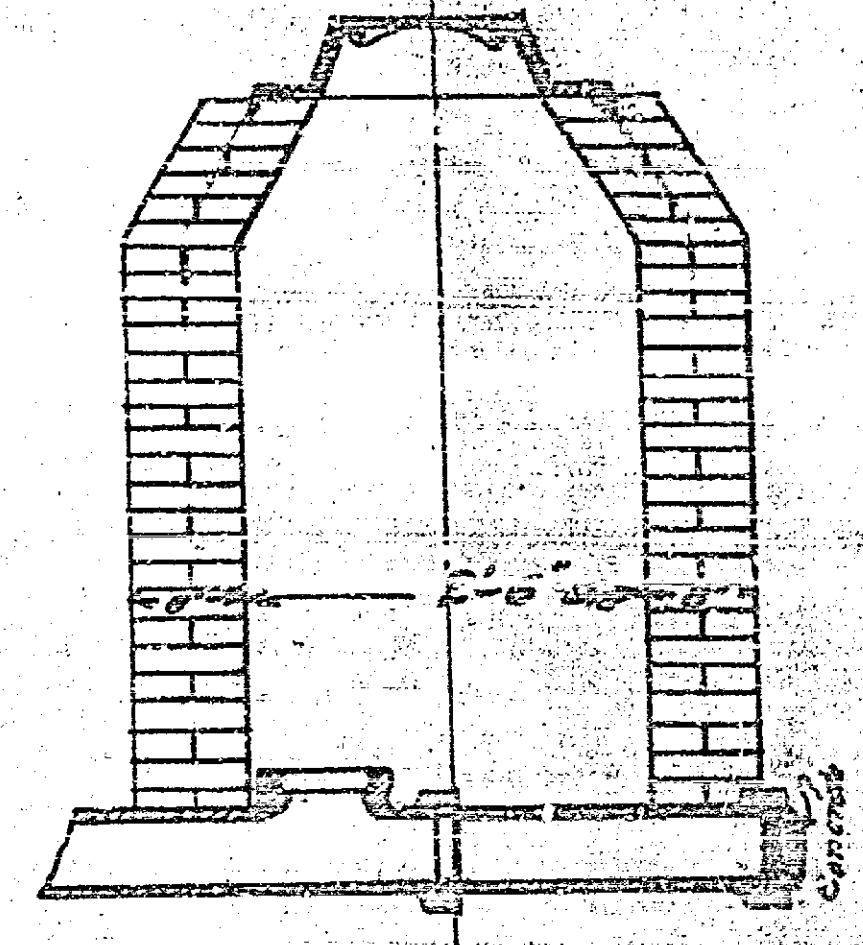
FOURTEENTH ST.

For Field Notes see book 94 pp 51



average cut 5.6'  
**465**

Type B Manhole



Adopted by the Mayor and Common Council of the City of Riverside December 17, 1918  
R.P. Carruth City Clerk

MAP  
Showing proposed sewer in Alley in Block 13 Range 2  
R.P. Carruth City Engineer  
Scale of Plan 1"=50 FT  
of Prof. Var 1"=5  
Details 1/2"=1'  
December 1918