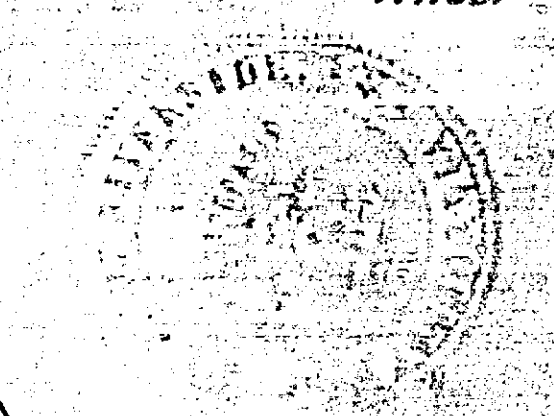
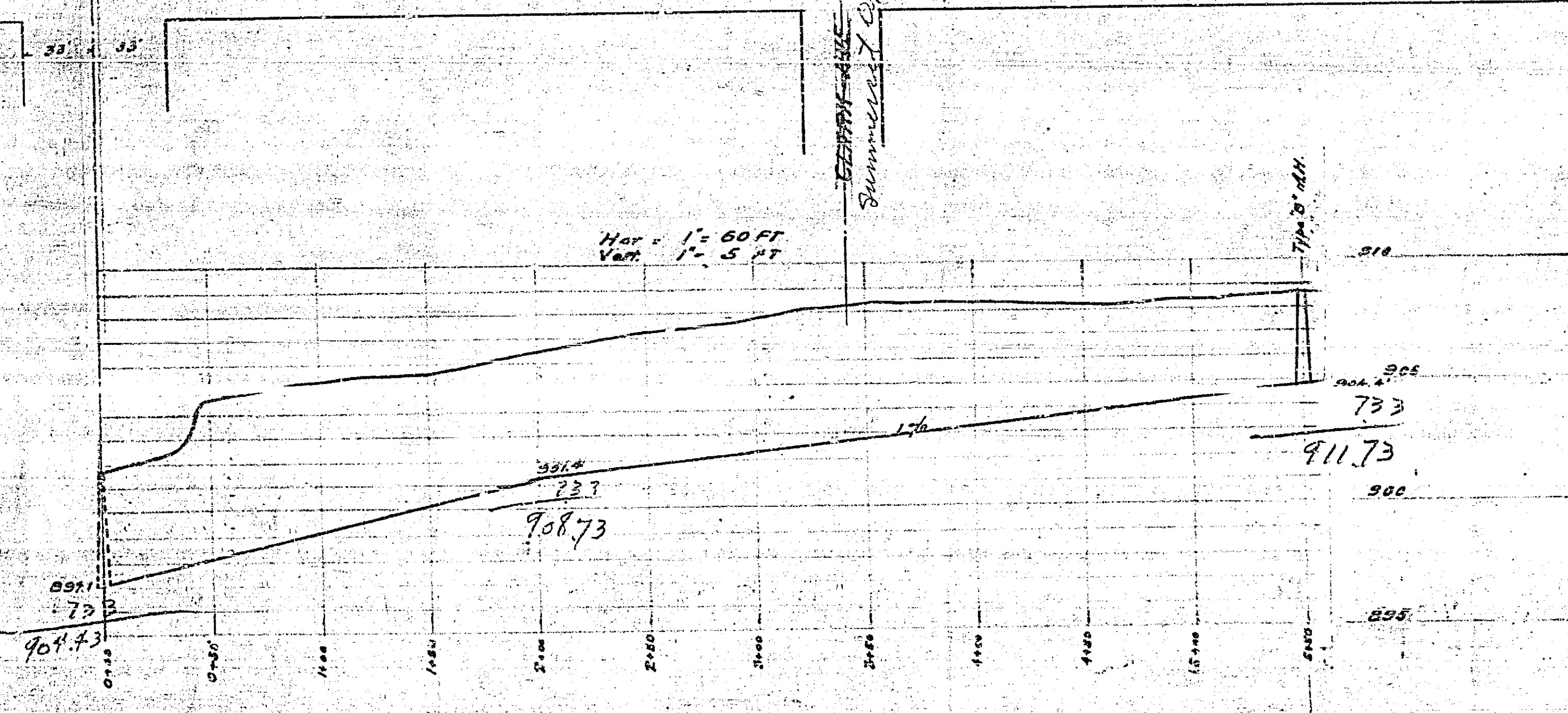
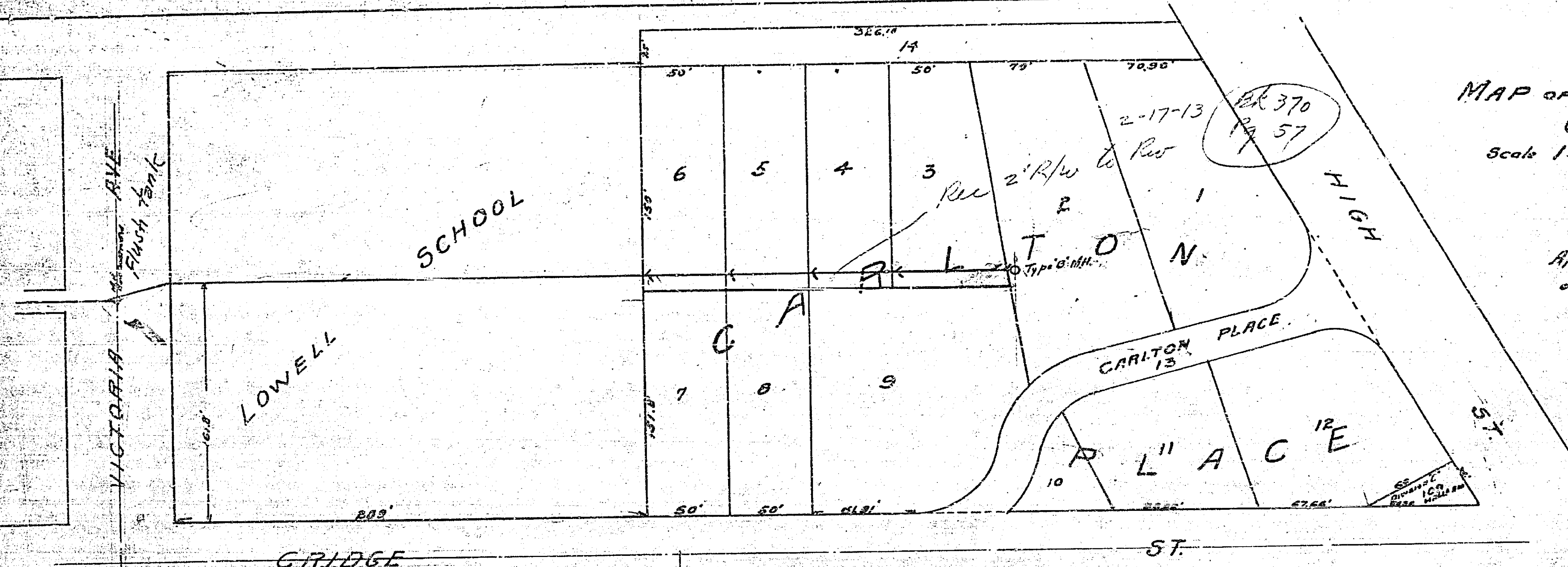


MAP OF PROPOSED SEWER IN
 CARLTON PLACE
 Scale 1" = 60 FT
 A.P. Campbell
 City Engineer

Approved by the Mayor and Common Council
 of the City of Riverside this 27th day of
 January 1913
 Attest *Ed. Lane*
 City Clerk



List of Material
 566 FT 6" V.I. S.G. Sewer Pipe over all
 11-4" 45
 1-type B" Manhole



Book 1107 - Pg 57

465A