

PLANS AND PROFILES  
 NO. 468  
 FOR THE CONSTRUCTION OF CONCRETE CURBS & GUTTERS ON  
**JURUPA AVENUE**  
 BETWEEN PALM AVENUE AND GRAND AVENUE  
 RIVERSIDE - CALIFORNIA

SCALE: HOR. 1 IN. = 50 FT.  
 VERT. 1 IN. = 5 FT.

FB-467-04 JULY 1955

482-1  
 500-87  
 807-28

APPROVED *J. Martiner*  
 J. MARTINER REG. CE, 6134  
 CIV. ENGINEER

**NOTICE TO CONTRACTORS**  
 ROUGH GRADING FOR CURB & GUTTER WILL HAVE BEEN DONE BEFORE CURBS & GUTTERS ARE CONSTRUCTED. CLOSE COORDINATION SHOULD BE ARRANGED WITH THE STREET SUPERINTENDENT BEFORE WORK IS STARTED.

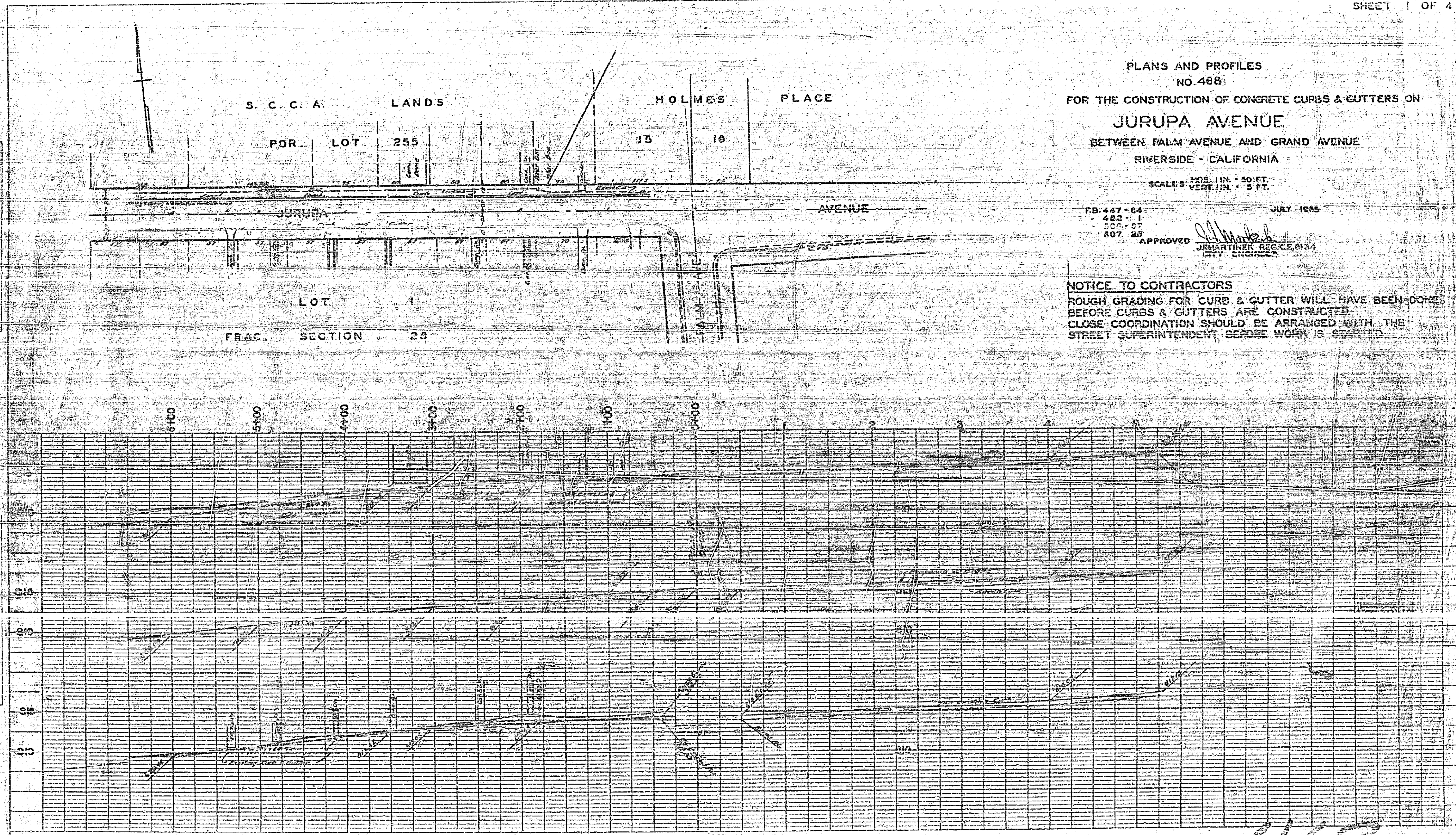
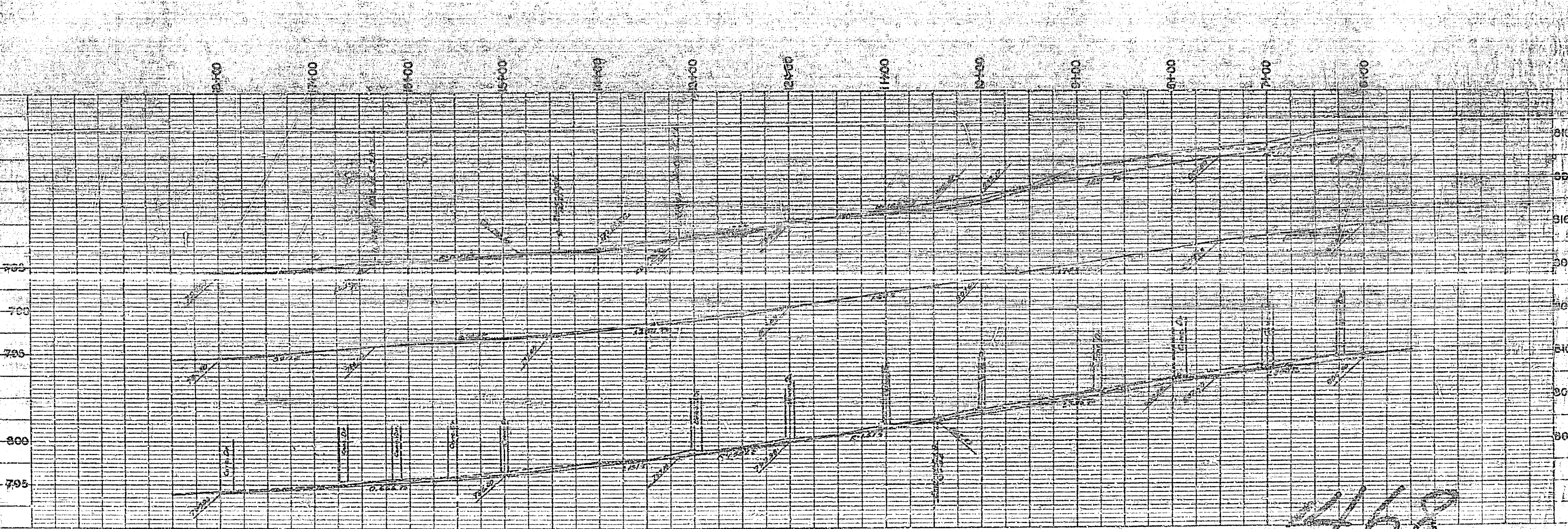
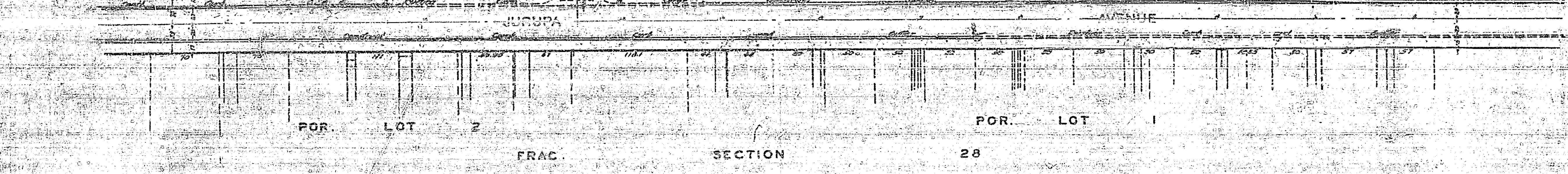
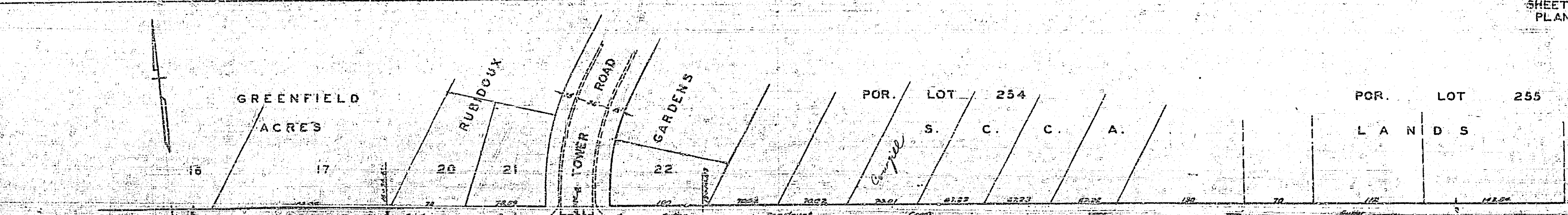


PLATE 1 - PLAN & PROFILE OF P. H. & E. STANDARD  
 KEMPFL & ESSER CO., NEW YORK  
 K. S. P. CO. NO. 20610

468



168

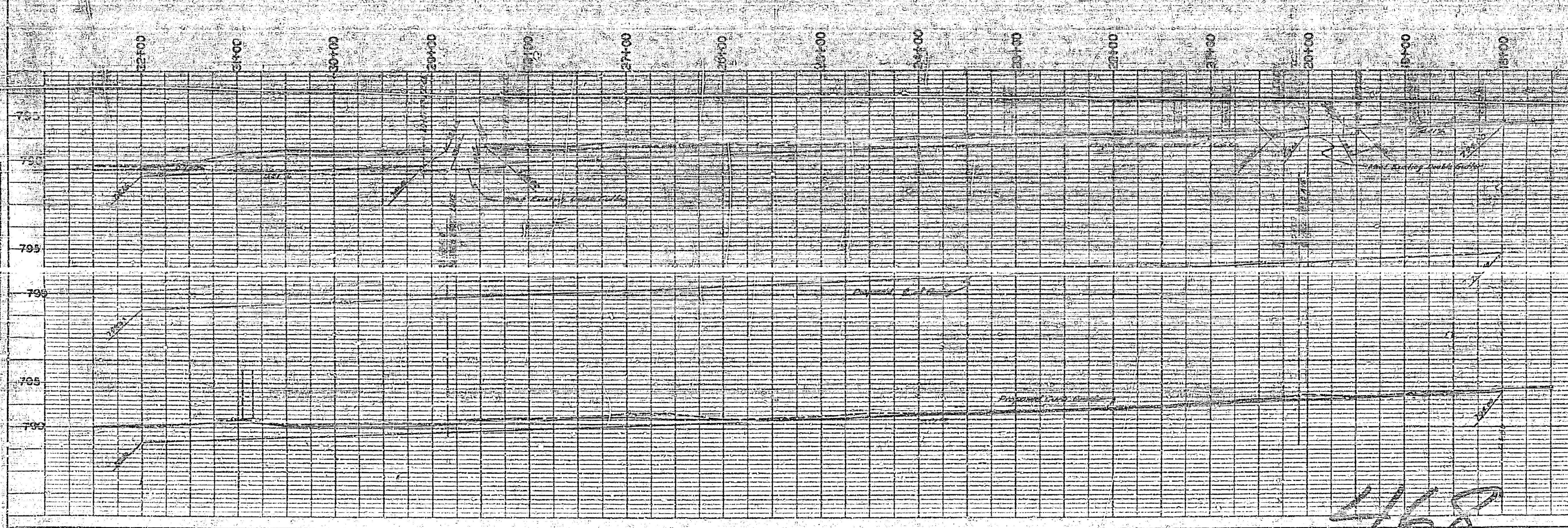
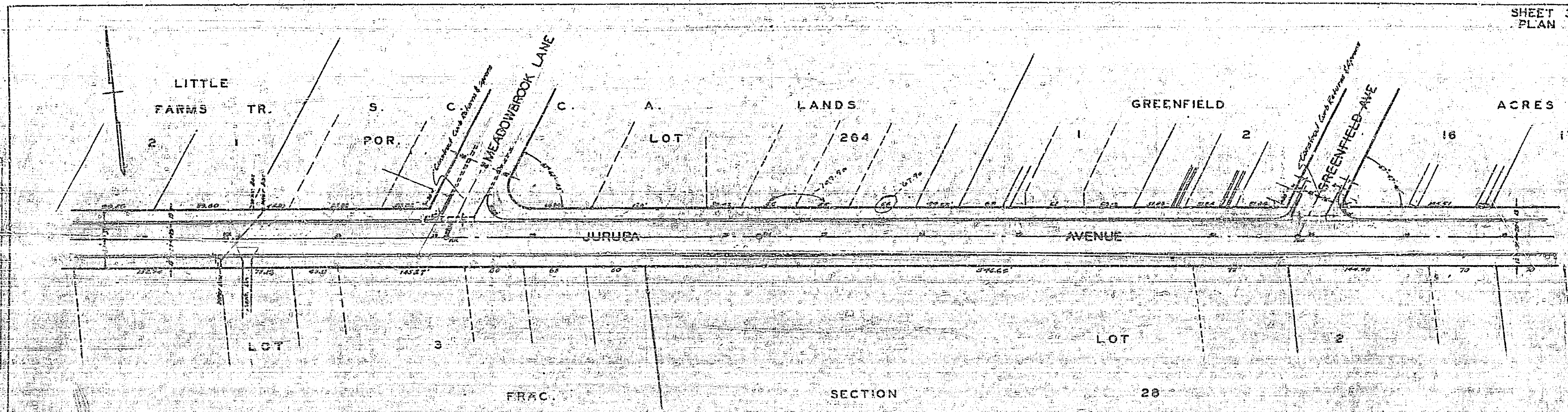


DATE	
BY	
CHECKED BY	
APPROVED BY	

PROFILE	
DATE	
BY	
CHECKED BY	
APPROVED BY	

169





460



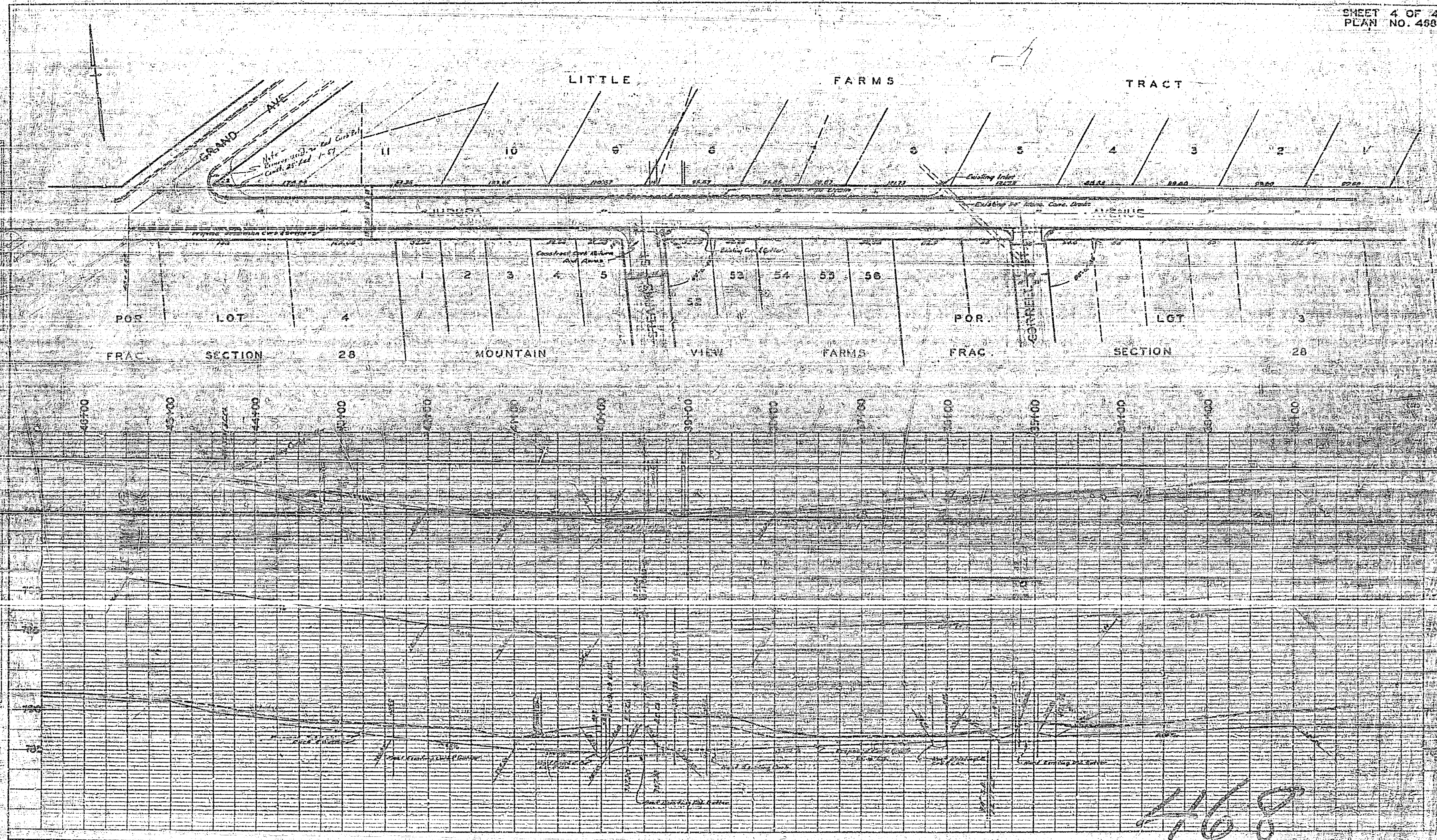


PLATE 1 - PLAN - PROFILE, G.C. & R.L. STANCO  
RECORDS & ENGINEERING CO., INC.  
N.E. CO. NO. 0468-1

468