

PLAN AND PROFILE
 NO. 469
 FOR THE CONSTRUCTION OF A
 SANITARY SEWER IN
KINGSLEY WAY
 ADJACENT TO THE DON WILSON TRACT
 CITY OF RIVERSIDE
 DISTRICT BOUNDARY

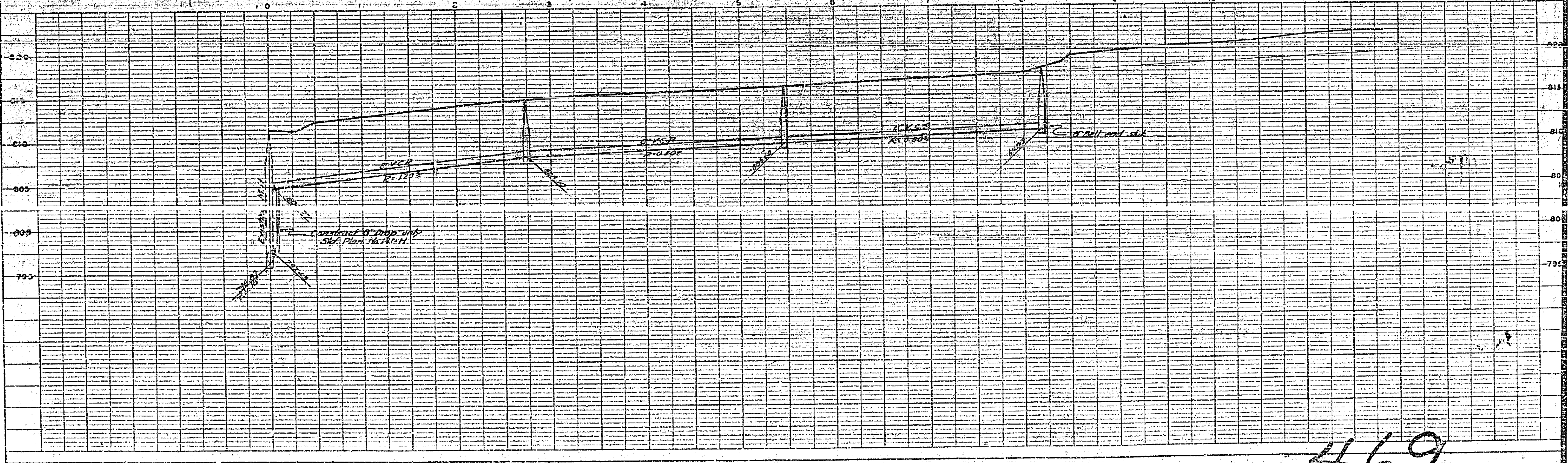
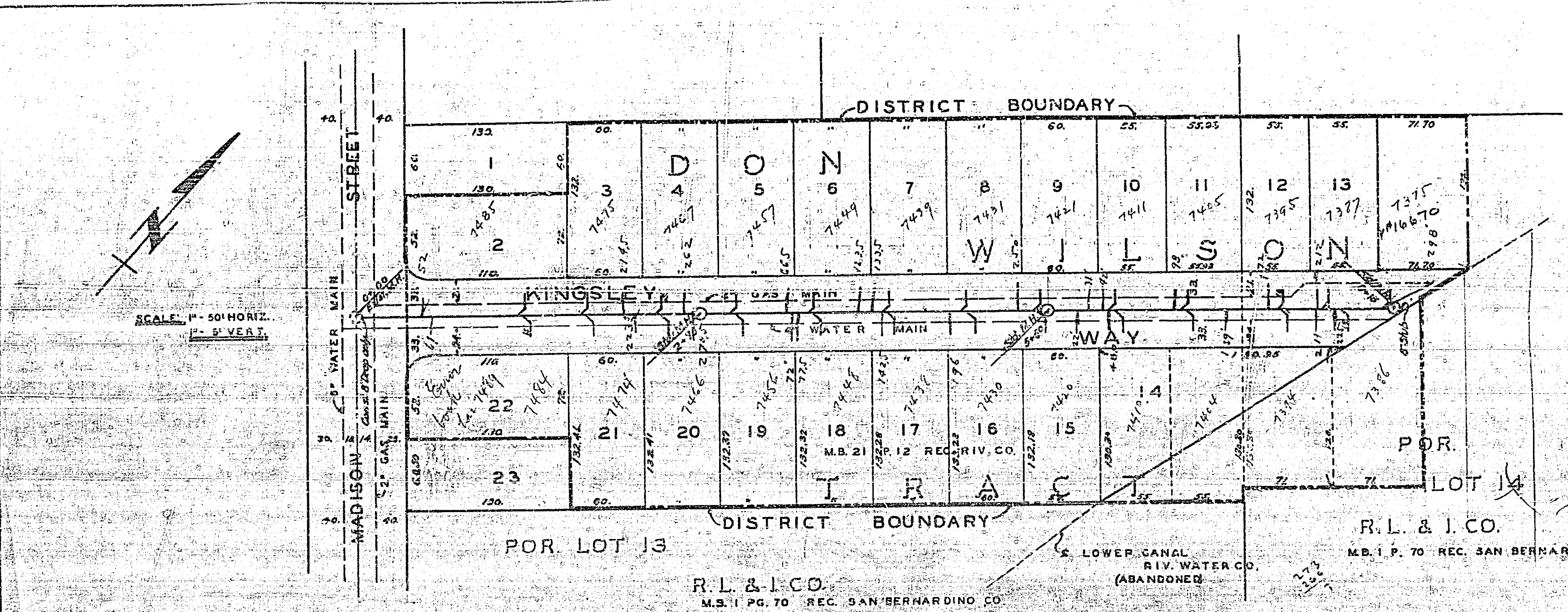
APPROVED: *M. H. Irvine*
 M.H. IRVINE REG. C.E. NO. 3011

THESE PLANS APPROVED AND ADOPTED BY THE
 MAYOR AND COUNCIL OF THE CITY OF RIVERSIDE,
 STATE OF CALIFORNIA, ON THIS 24TH DAY OF
 FEBRUARY 1953.

C. J. Davis
 CITY CLERK

PLAN
 DRAWN BY
 CHECKED BY
 NOTE BOOK NO.
 DATE

PROFILE
 DRAWN BY
 CHECKED BY
 NOTE BOOK NO.
 DATE



469