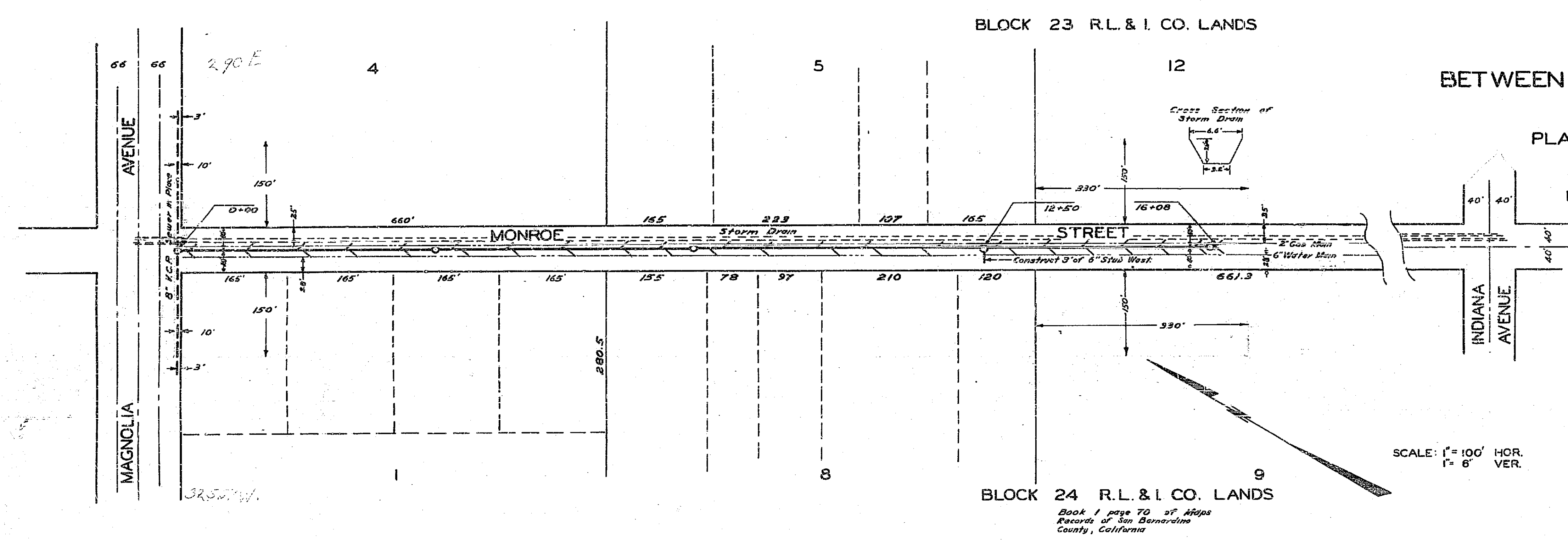


Monroe Street Sewer			
DRAWING NUMBER	SHEET NUMBER	TOTAL SHEETS	FIELD BOOKS
47		395	395
DRAWN BY	CHECKED BY	APPROVED BY	
J. F. H.		[Signature]	



**MONROE STREET**  
BETWEEN MAGNOLIA AVE. & INDIANA AVE.

PLAN & PROFILE OF SANITARY SEWER  
ENGINEERING DEPT. RIVERSIDE CALIF. DEC. 1945  
CITY (U.S.G.S.) DATUM PLANE

1911 ACT  
ASS'NT #325  
ASS'NT BK. 14/123  
APPROVED [Signature]  
REG. ENG. 1312 CITY ENGINEER

APPROVED AND ADOPTED BY THE MAYOR AND COUNCIL OF THE CITY OF RIVERSIDE THIS 26TH DAY OF DECEMBER, 1945.  
[Signature]  
CITY CLERK, CITY OF RIVERSIDE

LEGEND  
District to be assessed bounded by a yellow line:  
Sewer and manholes in place: ---  
Sewer - manholes - wye branches to be constructed: ---

