

ASSESSMENT NO. 374
DIAGRAM

EXHIBITING CALIFORNIA AVENUE SANITARY SEWER DISTRICT

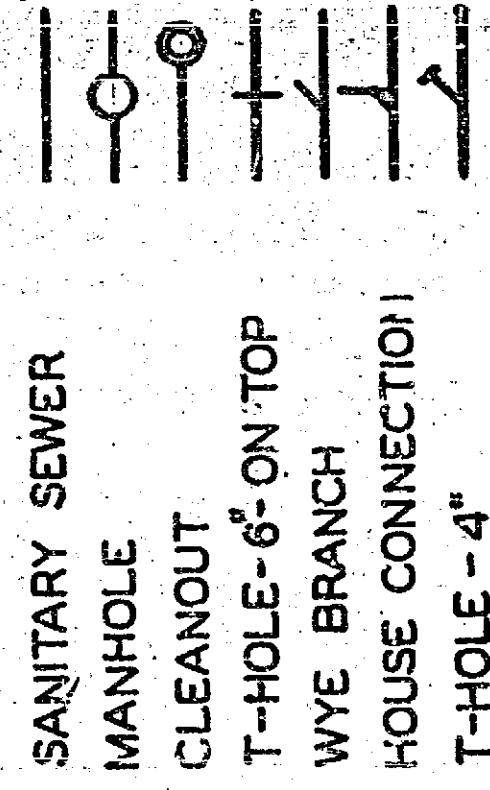
IN THE CITY OF RIVERSIDE ON WHICH WORK HAS BEEN DONE UNDER MY OFFICIAL CONTRACT AS SUPERINTENDENT OF STREETS OF SAID CITY WITH PIPELINE CONSTRUCTION COMPANY DATED OCTOBER 21, 1952 FOR THE CONSTRUCTION OF SANITARY SEWER, MANHOLES, CLEANOUT, T-HOLES, WYE BRANCHES, HOUSE CONNECTIONS, DROP MANHOLE, & CONCRETE CRADLE. AS IS MORE PARTICULARLY DESCRIBED IN SAID CONTRACT TO WHICH REFERENCE IS HEREBY MADE FOR FURTHER PARTICULARS; SAID DIAGRAM ALSO SHOWS THE RELATIVE LOCATION OF EACH LOT, PORTION OF LOT, PIECE OR PARCEL OF LAND ASSESSED FOR THE WORK DONE NUMBERED IN CIRCLES TO CORRESPOND TO THE RED INK NUMBERS IN THE ASSESSMENT HEREIN FIGURES NEXT TO PROPERTY LINES SHOW LENGTH OF SAID LINES IN FEET. THE MARK (J) MEANS FEET. PROPERTY LINES THAT DIFFER FROM THE RECORDED SUBDIVISIONS ARE SHOWN BY BROKEN LINES. THE DISTRICT BENEFITED IS BOUNDED BY A HEAVY DASHED LINE. PROPERTY COVERED BY THIS ASSESSMENT IS SHOWN ON THE FOLLOWING RECORDED MAPS:

- R. L. & I. CO. LANDS: M.B.1, PG. 70, REC. S.B. CO.
- CALIFORNIA AVENUE TRACT M. B. 21, PG. 32, REC. RIV. CO.
- ZAK RANCHO TRACT M. B. 25, PG. 84, REC. RIV. CO.
- RAY SUBDIVISION M. B. 24, PG. 79, REC. RIV. CO.
- CALIFORNIA SQUARE M. B. 25, PG. 87, 88, REC. RIV. CO.
- CALIFORNIA GROVES M. B. 25, PG. 97, REC. RIV. CO.

I HEREBY CERTIFY THAT THIS ASSESSMENT DIAGRAM WAS APPROVED BY THE CITY COUNCIL OF THE CITY OF RIVERSIDE AT A MEETING THEREOF HELD ON THE DAY OF 19

CITY CLERK OF THE CITY OF RIVERSIDE.

HEREIN THE LEGEND OF THE DIFFERENT KINDS OF WORK PERFORMED IS SHOWN AS FOLLOWS:



SUPERINTENDENT OF STREETS OF THE CITY OF RIVERSIDE
THE FOLLOWING IS A STATEMENT OF AMOUNTS OF DIFFERENT KINDS OF WORK DONE BY PIPELINE CONSTRUCTION COMPANY UNDER CONTRACT DATED OCTOBER 21, 1952 PURSUANT TO RESOLUTION OF INTENTION NO. 5397 ADOPTED BY THE CITY COUNCIL OF THE CITY OF RIVERSIDE ON THE 5TH DAY OF AUGUST 1952

21" VITRIFIED CLAY PIPE	2724.14 LIN. FT.
15" VITRIFIED CLAY PIPE	2725.26 LIN. FT.
10" VITRIFIED CLAY PIPE	195.36 LIN. FT.
8" VITRIFIED CLAY PIPE	1416.86
STD. MANHCLES	19
STD. CLEANOUT	1
2 1/2" T-HOLES	80
15" 6" T-HOLES	13
15" 4" T-HOLES	53
10" 4" WYES	16
6" 4" WYES	33
4" VITRIFIED CLAY PIPE HOUSE CONNECTIONS	1136 LIN. FT.
STD. DROP MANHOLE	1
CONCRETE CRADLE	20 LIN. FT.

AT SAID CITY OF RIVERSIDE THIS DAY OF

SUPERINTENDENT OF STREETS
O: THE CITY OF RIVERSIDE.

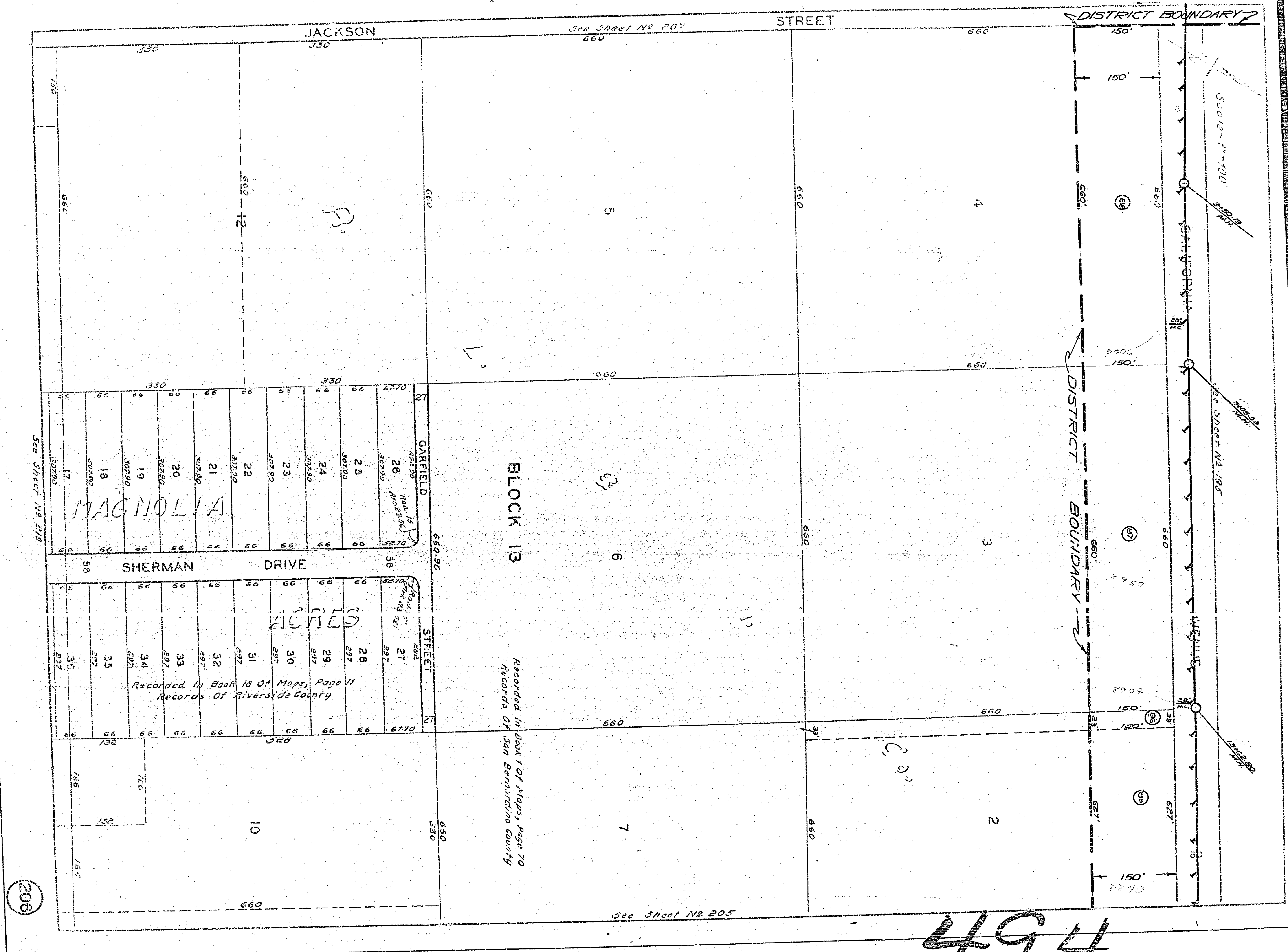
I HEREBY CERTIFY THAT THE ABOVE WORK WAS DONE IN ACCORDANCE WITH LINES AND GRADES FURNISHED BY ME AND THAT THE DIAGRAM OF THE ASSESSMENT DISTRICT FOR THE SAME IS CORRECT.

CITY ENGINEER
OF THE CITY OF RIVERSIDE.

RECORDED AT 6:51 O'CLOCK A.M.
THIS 29TH DAY OF JULY 1953

SUPERINTENDENT OF STREETS
OF THE CITY OF RIVERSIDE.

467



See Sheet No 207
660

BLOCK 13

Recorded in Book 1 of Maps, Page 70
Records of San Bernardino County

See Sheet No 205

MAGNOLIA

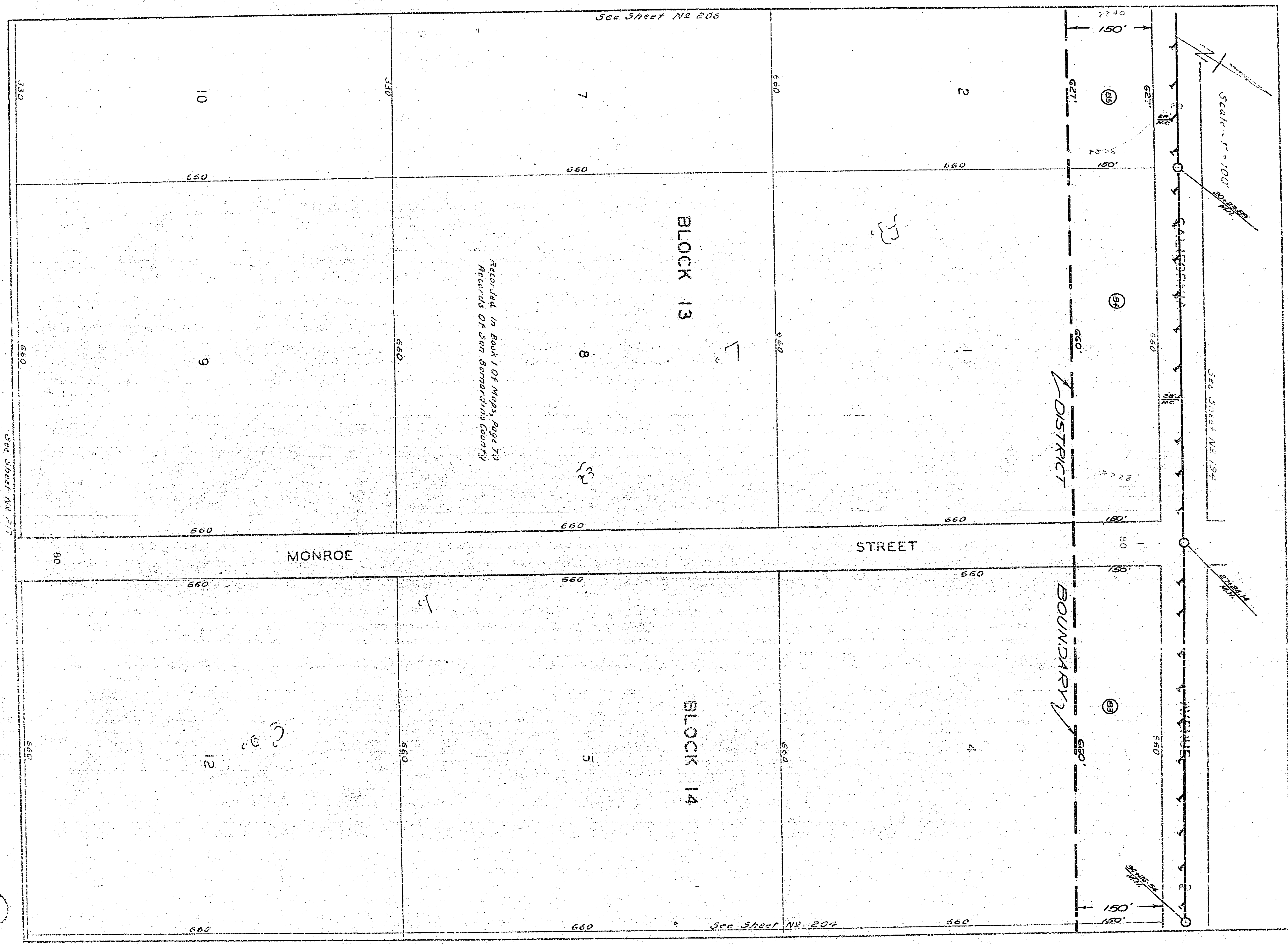
RICHES

Recorded in Book 18 of Maps, Page 11
Records of Riverside County

206

494

494



See Sheet No 206

See Sheet No 204

Scale - 1" = 100'

See Sheet No 124

DISTRICT

BOUNDARY

BLOCK 13

BLOCK 14

MONROE STREET

GALLERIA AVENUE

10

9

12

7

8

5

2

1

4

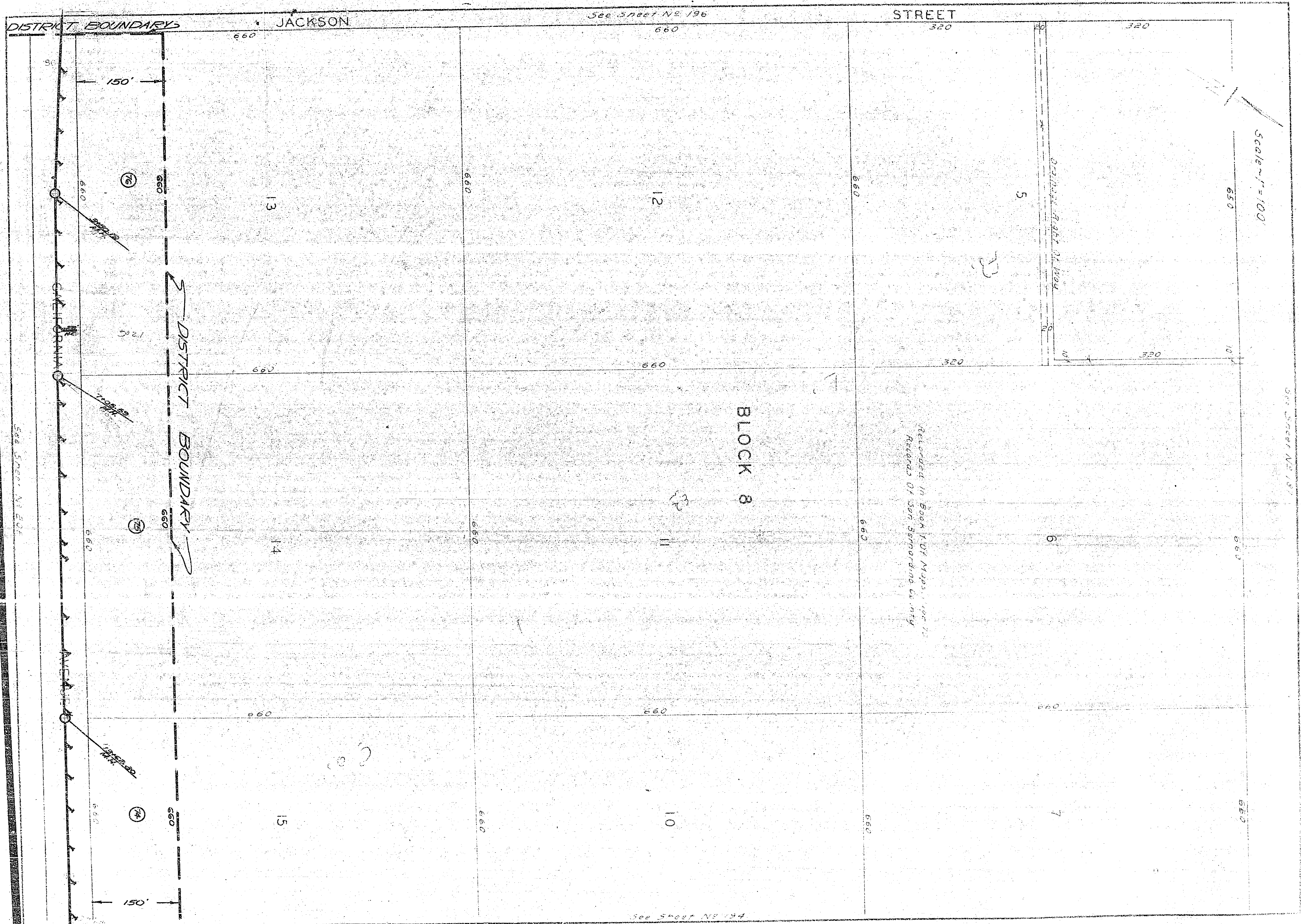
See Sheet No 217

See Sheet No 217

See Sheet No 217

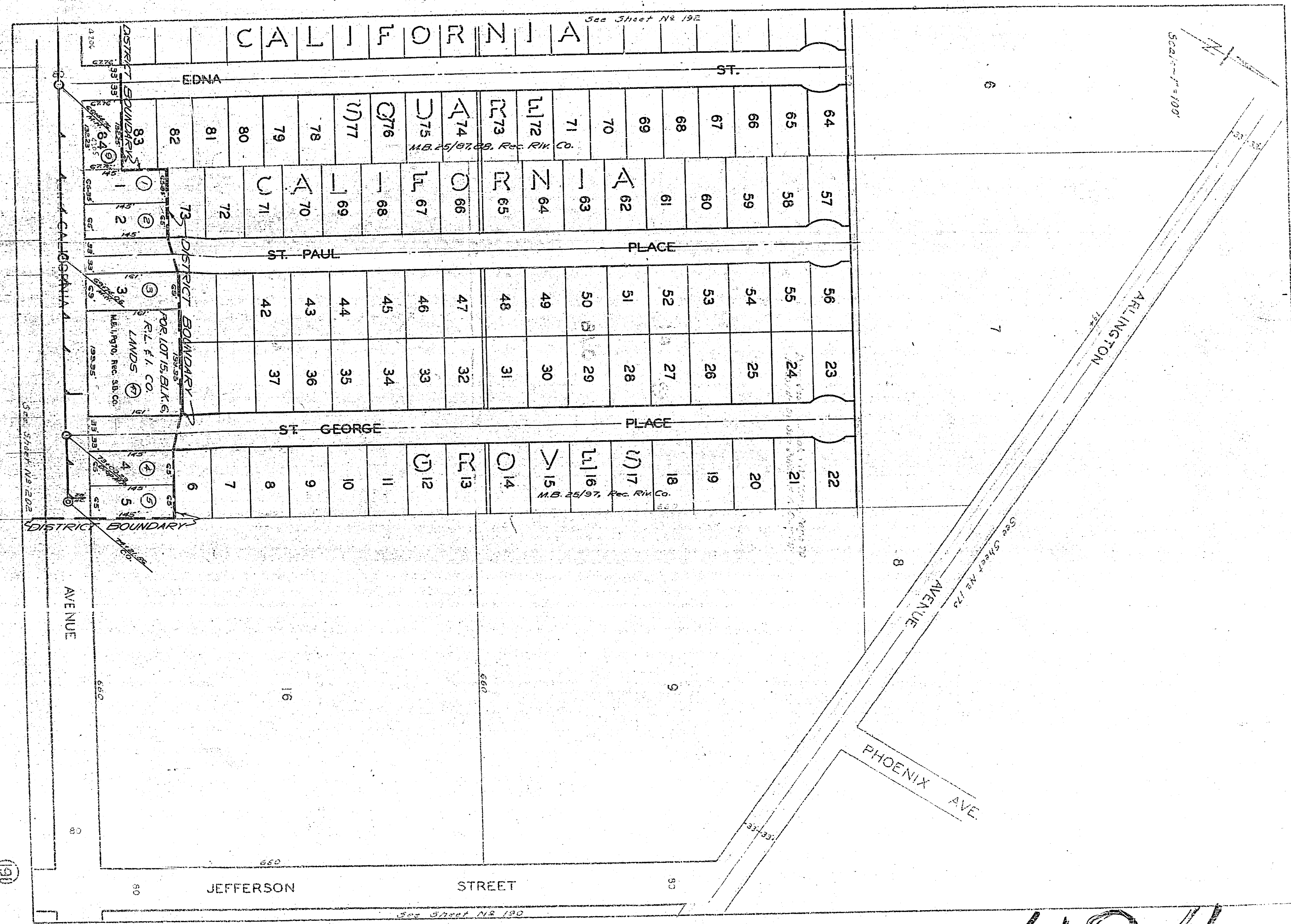
See Sheet No 217

tab 6



0.1

PL 25 1904 5 205



CALIFORNIA ST.

ST. PAUL PLACE

ST. GEORGE PLACE

JEFFERSON STREET

ARLINGTON AVENUE

PHOENIX AVE.

AVENUE

See Sheet No. 192

M.B. 25/97, Rec. Riv. Co.

M.B. 25/97, Rec. Riv. Co.

FOR LOT 15, BLK. 6, R.L. F.I. CO. LANDS. M.B. 1/1970, Rec. S.B. Co.

See Sheet No. 190

Scale - 1" = 100'

6

7

8

9

9

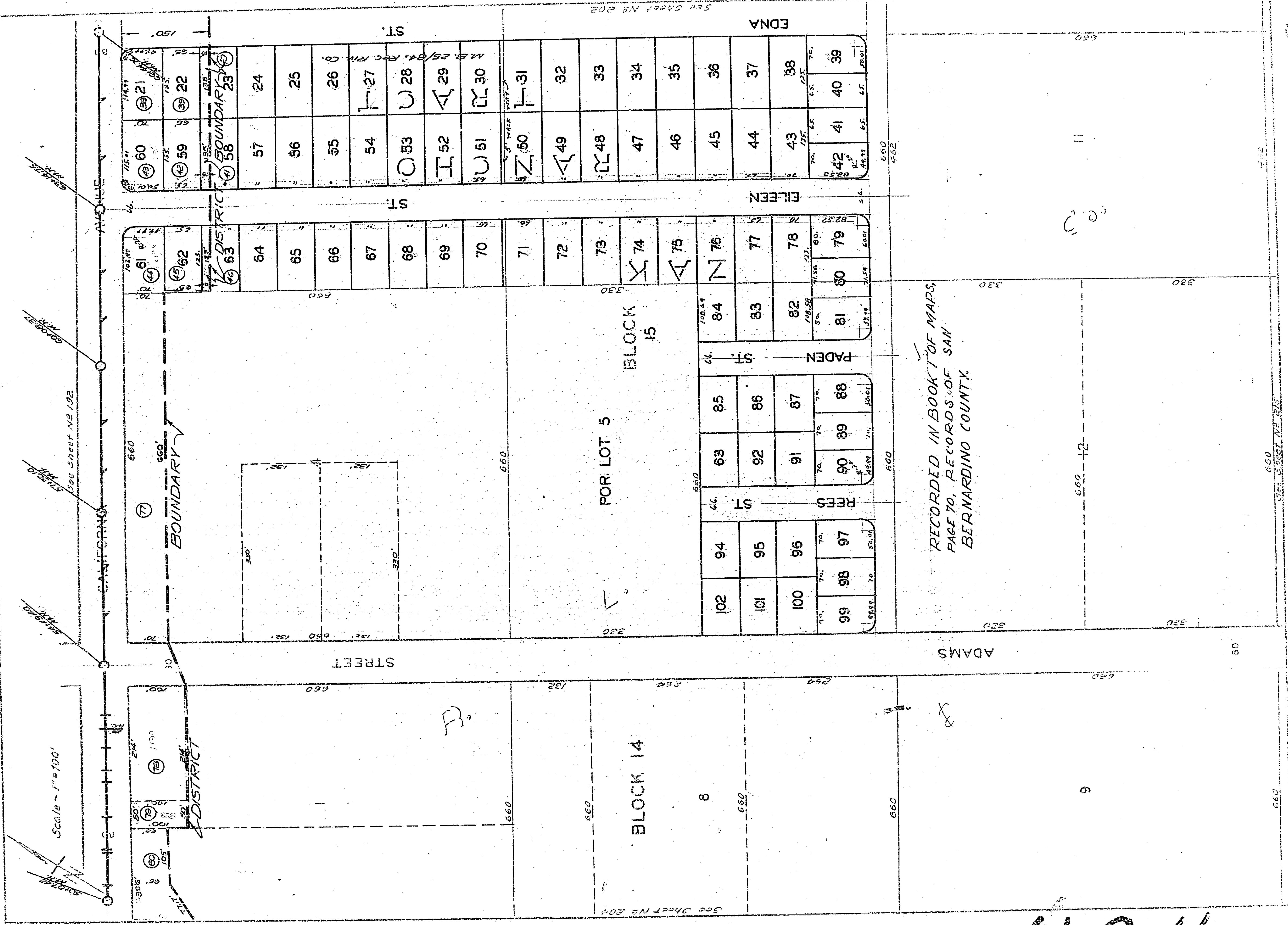
16

80

30

467

Scale - 1" = 100'



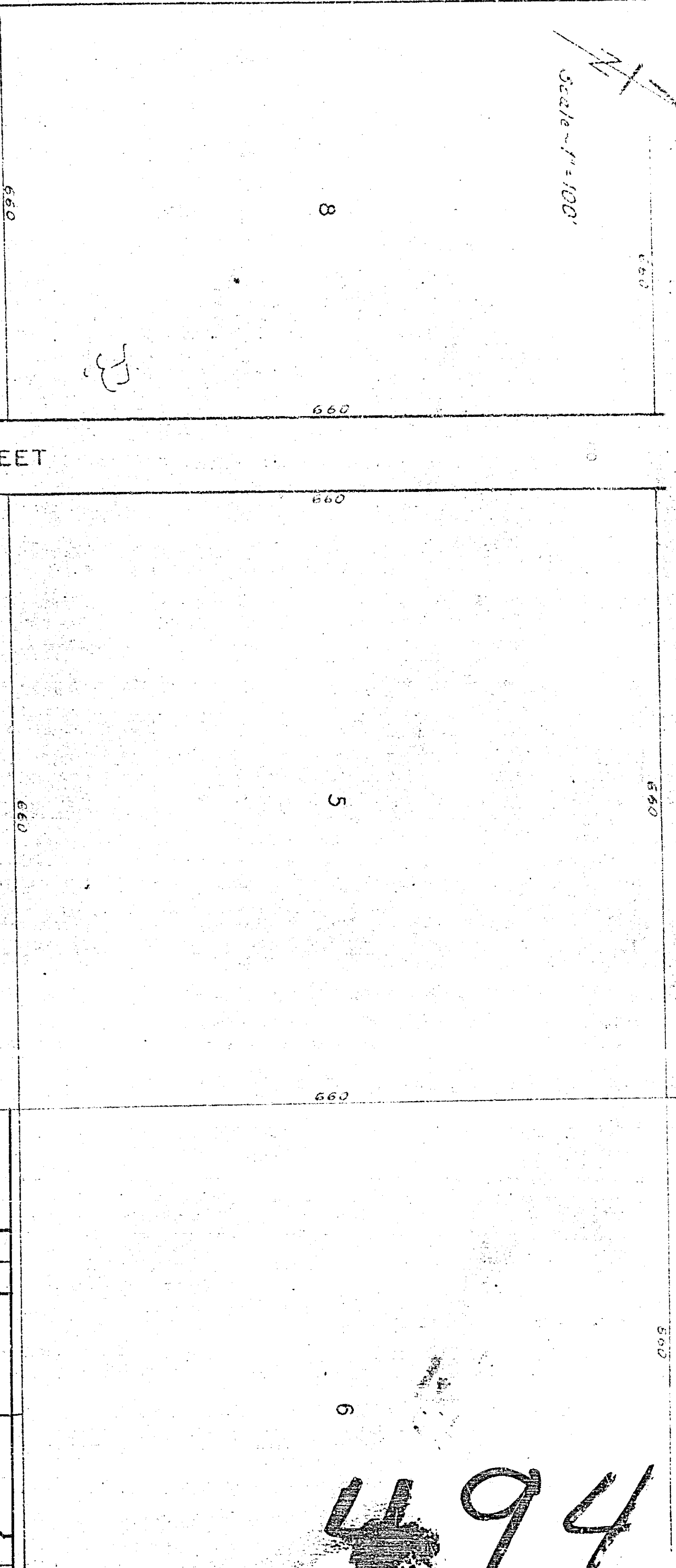
RECORDED IN BOOK OF MAPS,
PAGE 70, RECORDS OF SAN
BERNARDINO COUNTY.

494

202

Scale - 1" = 100'

See Sheet No. 194



ADAMS STREET

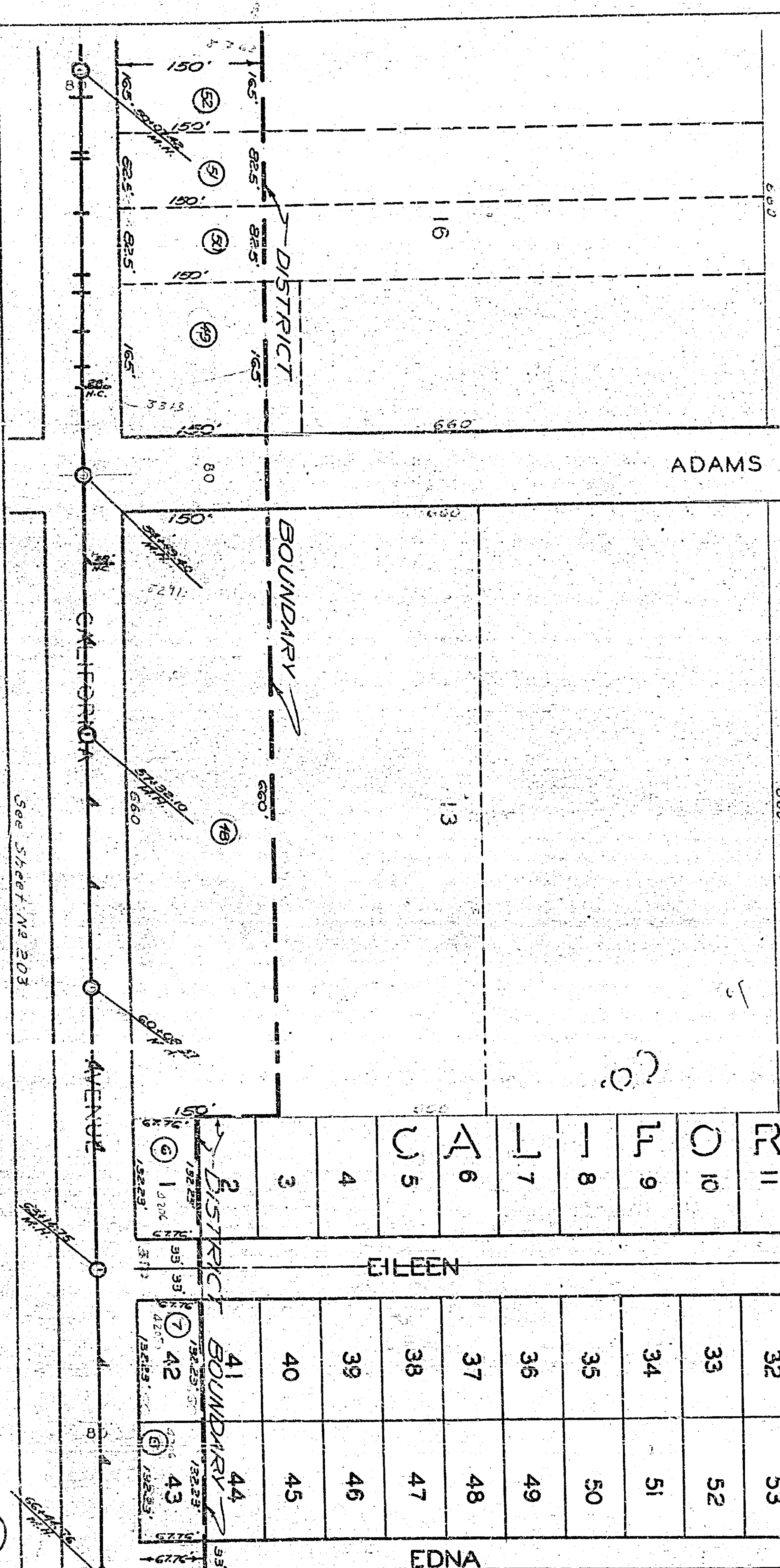
BLOCK 6

BLOCK 7

Recorded in Book 1 of Maps, Page 70
Records of San Bernardino County

21	22	63
20	23	62
19	24	61
18	25	60
17	26	L 59
16	27	L 58
15	28	57
14	29	56
13	30	55
12	31	54
L 11	32	53
O 10	33	52
L 9	34	51
8	35	50
7	36	49
6	37	48
5	38	47
4	39	46
3	40	45
2	41	44
1	42	43

EDNA ST



See Sheet No. 203

CHILFORD AVENUE

EDNA

See Sheet No. 191

192

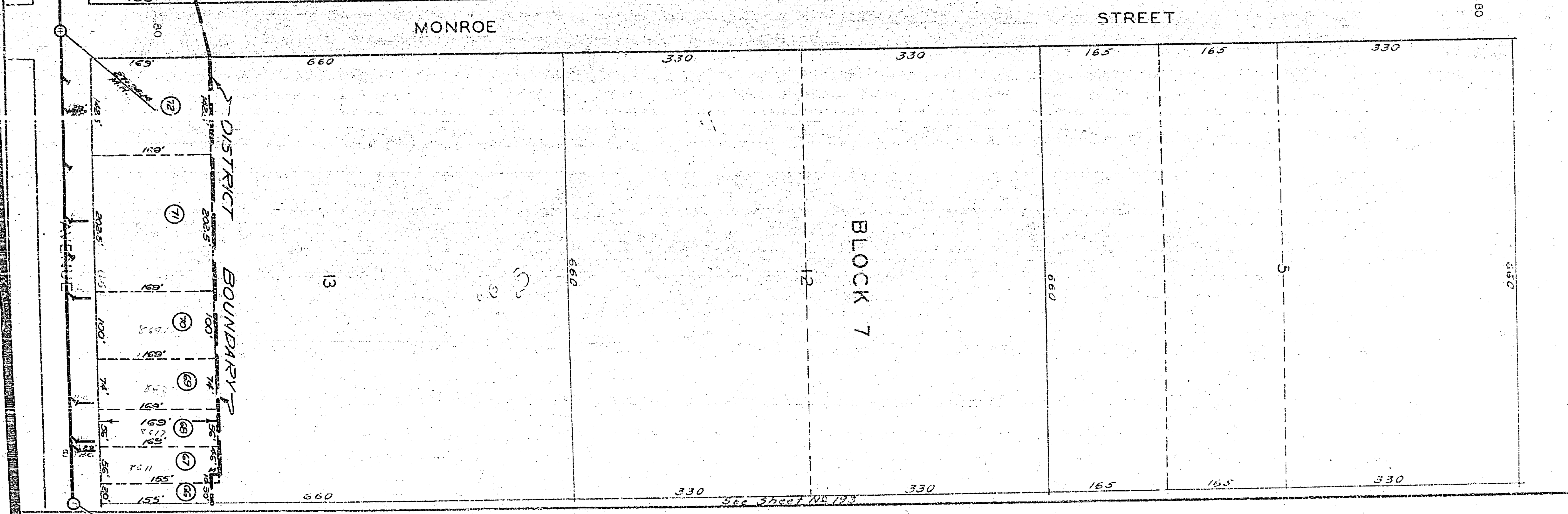
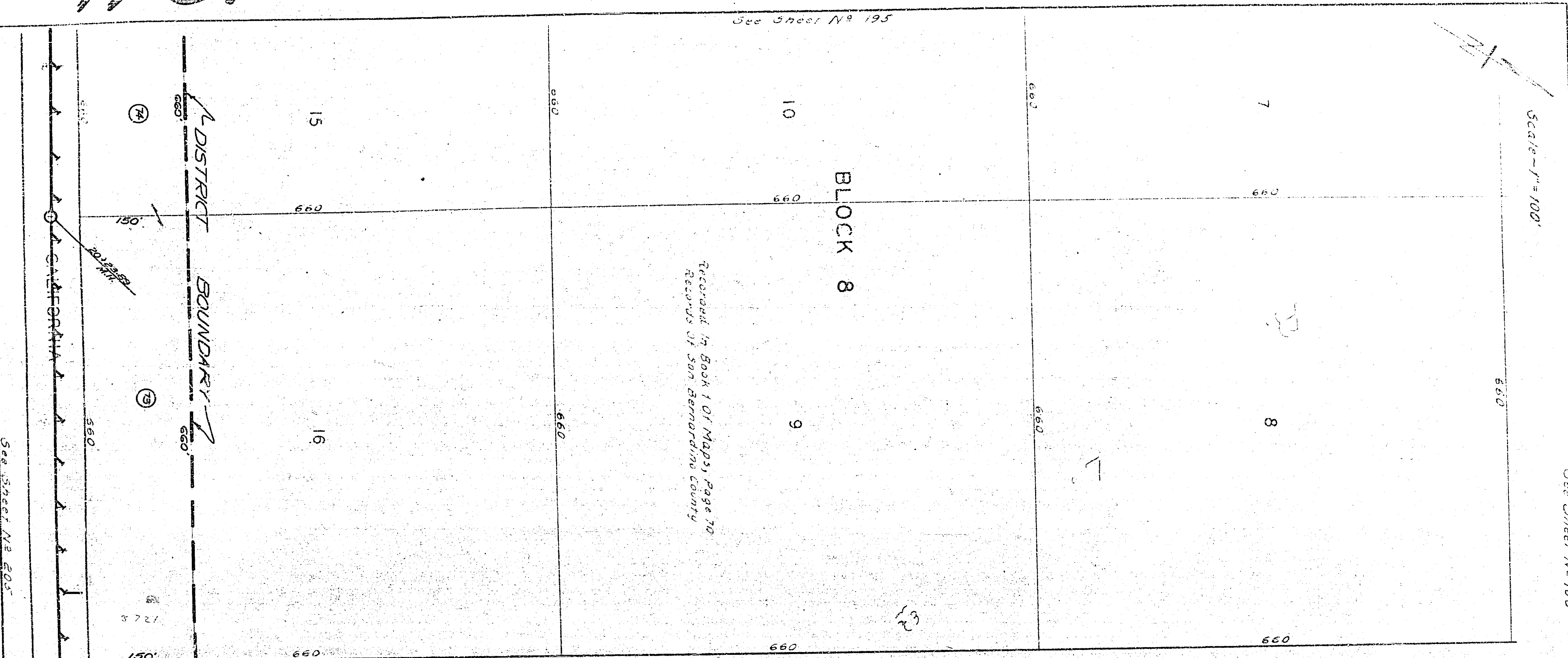
494

1767

See Sheet No 195

Scale - 1" = 100'

See Sheet No 186



See Sheet No 185

See Sheet No 193

CALIFORNIA AVENUE
 SANITARY SEWER DISTRICT
 RIVERSIDE, CALIFORNIA
 ASSESSMENT INDEX MAP

Scale: 1 in. = 300 ft.

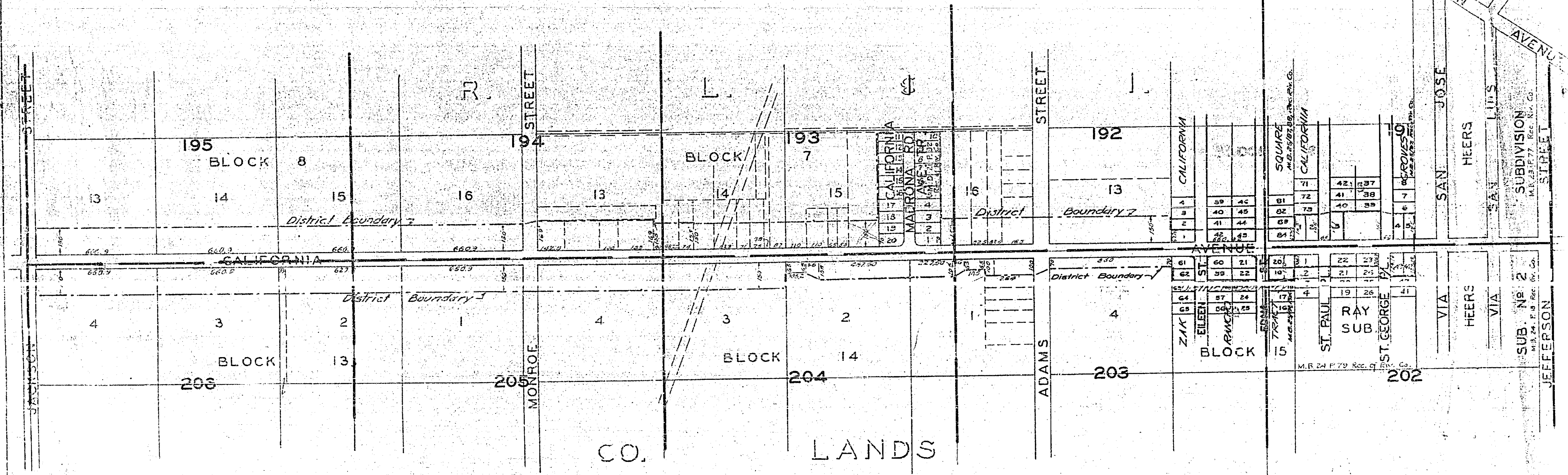
ARLINGTON AVENUE

SAN JOSE HEERS

SUBDIVISION

SUB. No. 2

JEFFERSON

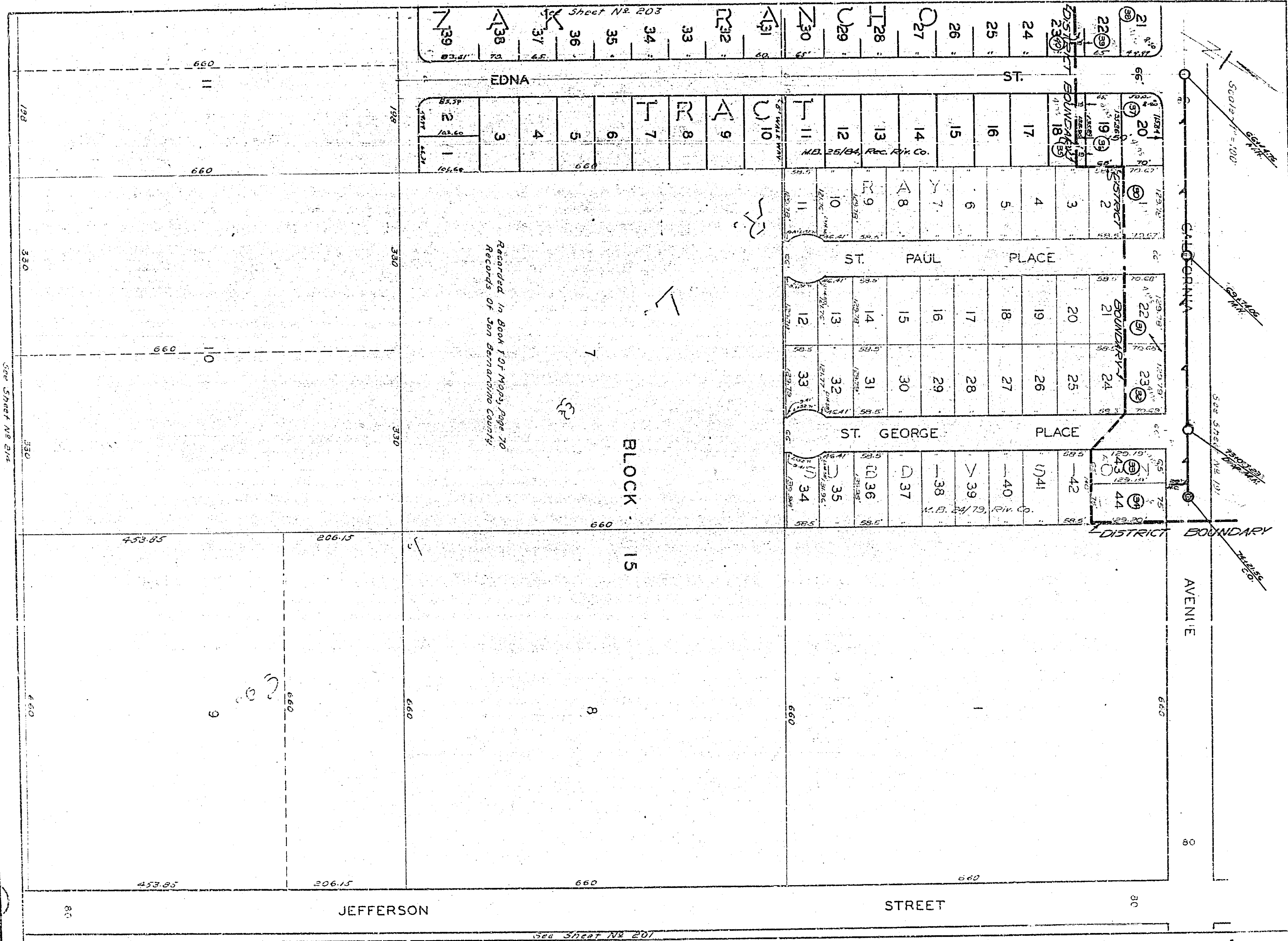


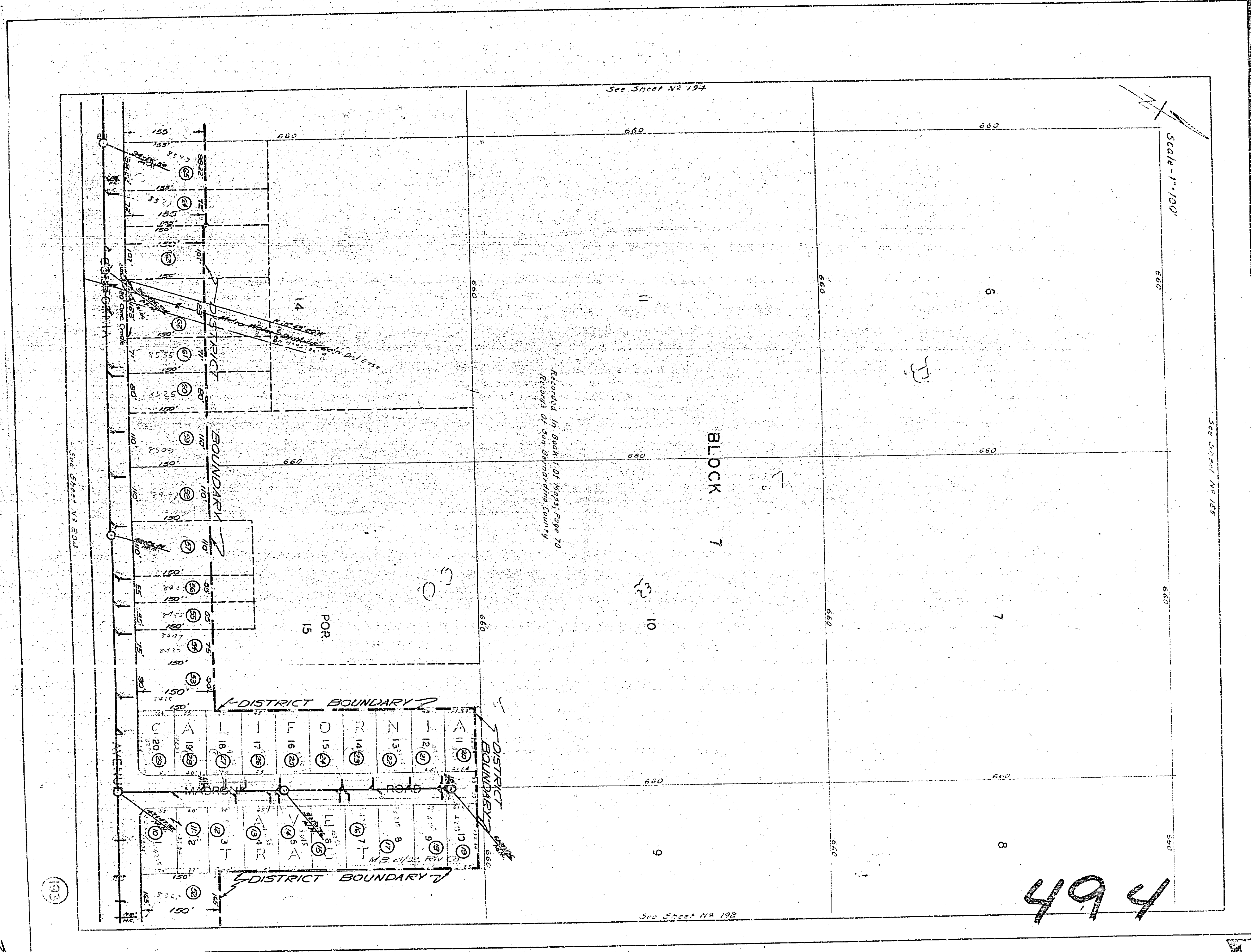
M.B. 1 P 70 Rec. of S.B. Co.

494

494

167





See Sheet No 194

Scale - 1" = 100'

See Sheet No 185

BLOCK 7

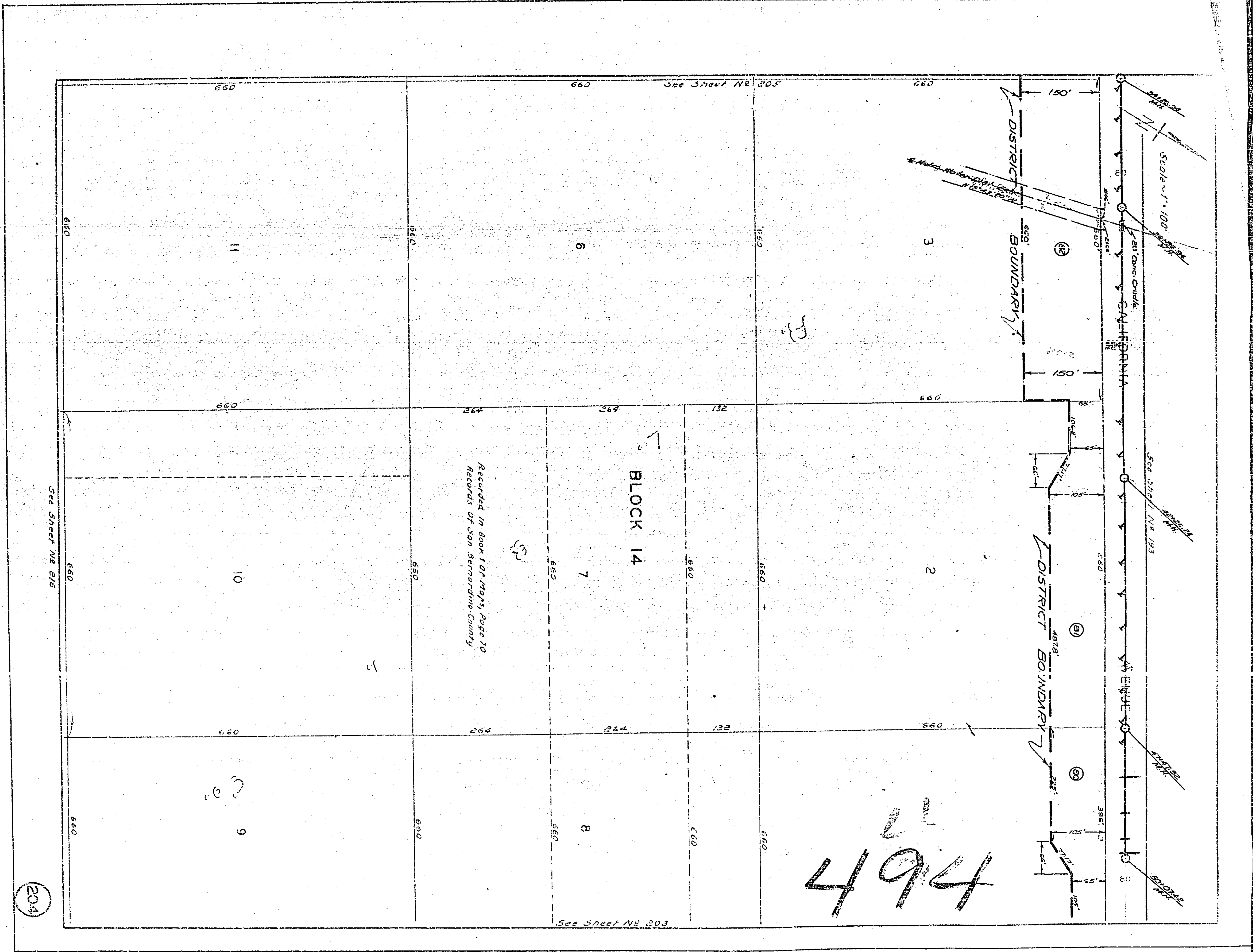
Recorded in Book 1 of Maps, Page 70
Records of San Bernardino County

See Sheet No 182

494

See Sheet No 184

103



494

204