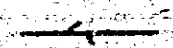
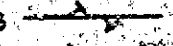
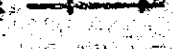


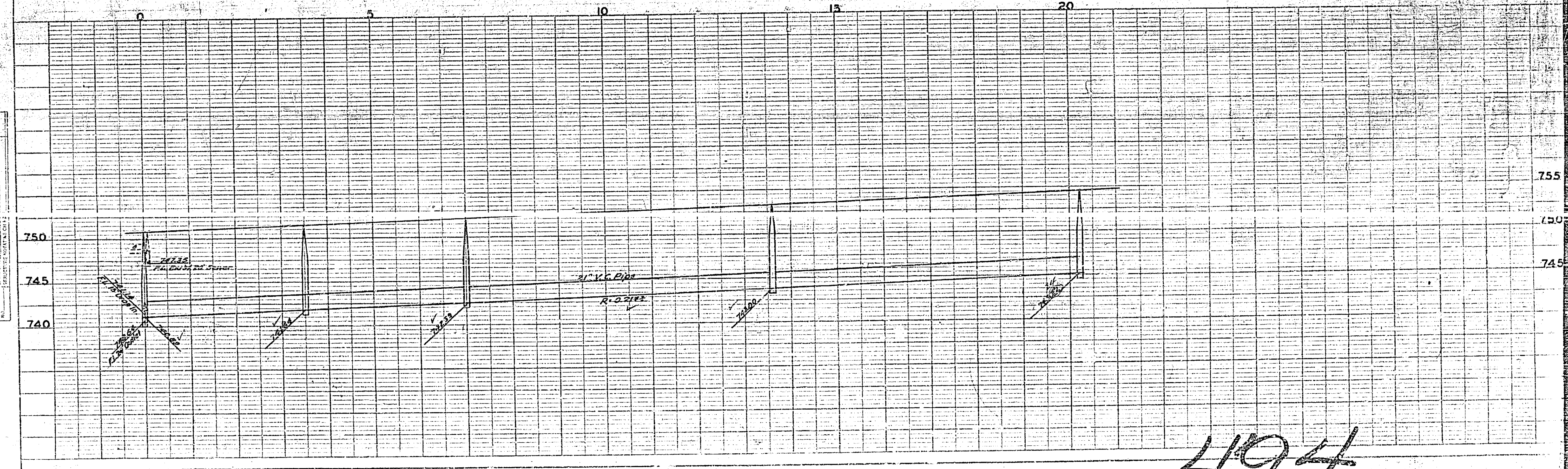
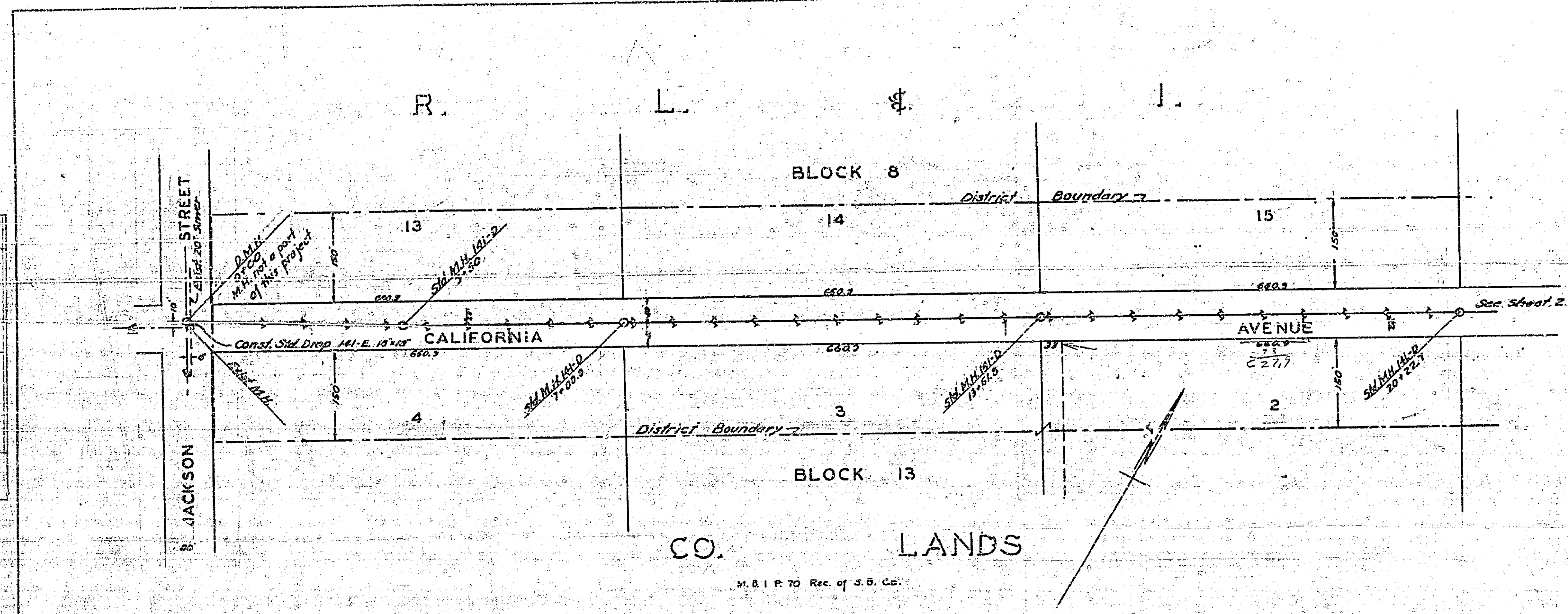
PLAN AND PROFILE
 NO. 494
 FOR THE CONSTRUCTION OF A
 SANITARY SEWER IN
CALIFORNIA AVENUE
 FROM JACKSON STREET TO ST GEORGE PLACE
 AND IN MADRONA ROAD
 CITY OF RIVERSIDE, CALIFORNIA

F.B. JUNE 1952
 SCALES HOR. 1 IN. = 100 FT.
 VERT. 1 IN. = 5 FT.

APPROVED *M.H. Irvine*
 M.H. IRVINE, REG. C.E. NO. 5011
 CITY ENGINEER

THESE PLANS APPROVED AND ADOPTED BY THE MAYOR
 AND COUNCIL OF THE CITY OF RIVERSIDE, STATE OF
 CALIFORNIA, ON THE 22ND DAY OF *July* 1952.
W. Williams
 CITY CLERK

LEGEND
 WYE BRANCHES 
 4 IN. TEE HOLES 
 6 IN. TEE HOLES  ON TOP OF PIPE

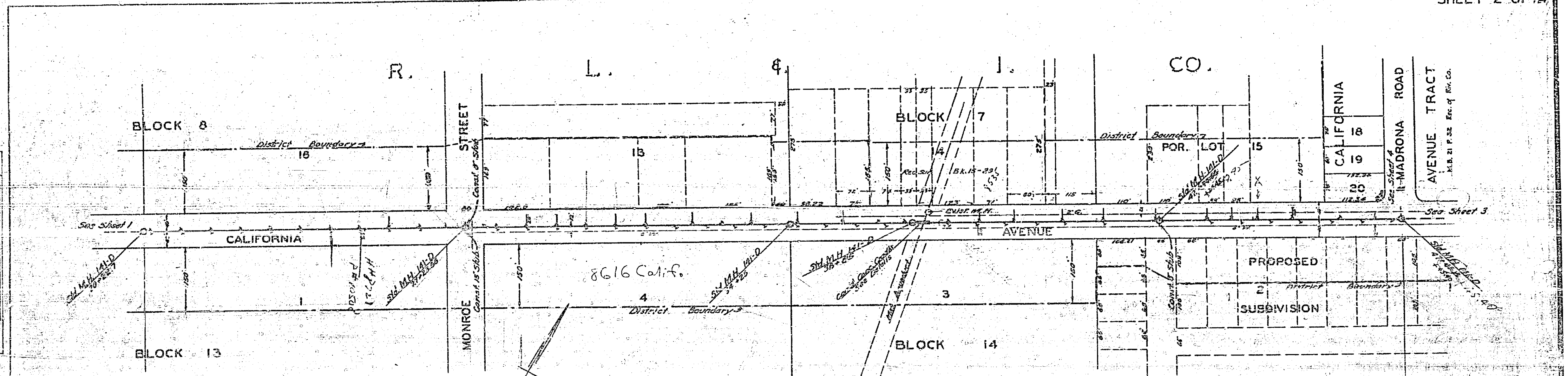


494

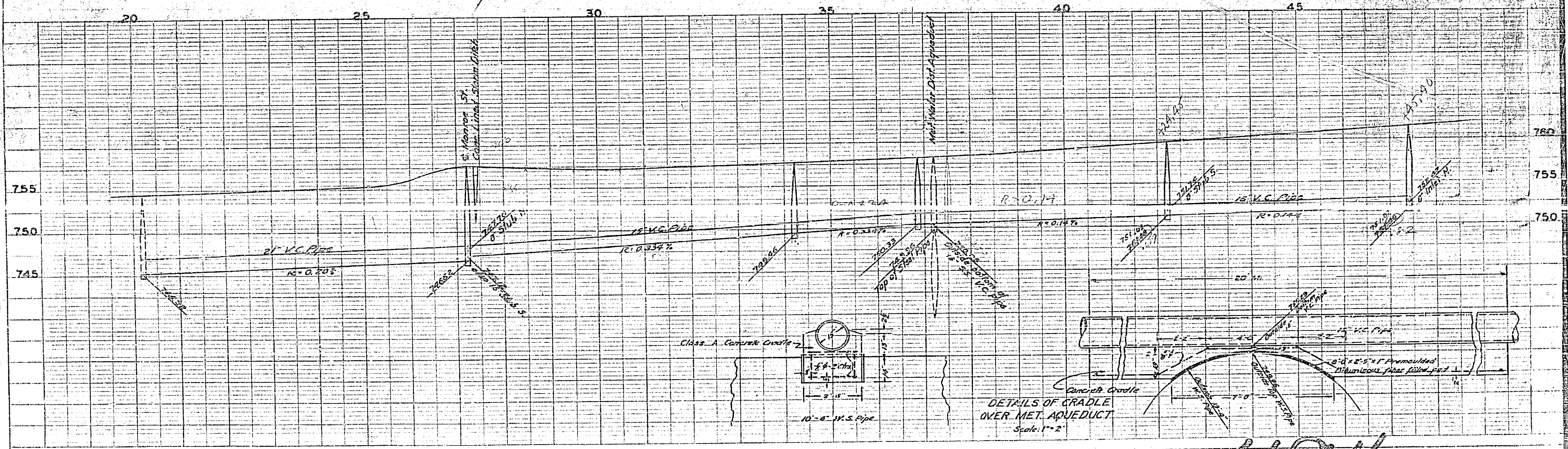
PLAN	DATE
NOTED	
DATE	
BY	
DATE	
BY	
DATE	
BY	
DATE	

PROFILE	DATE
NOTED	
DATE	
BY	
DATE	
BY	
DATE	
BY	
DATE	

PLATE 1 - PLAN AND PROFILE OF SANITARY SEWER
 PROJECT NO. 494
 CITY OF RIVERSIDE, CALIFORNIA
 M. H. IRVINE, ENGINEER



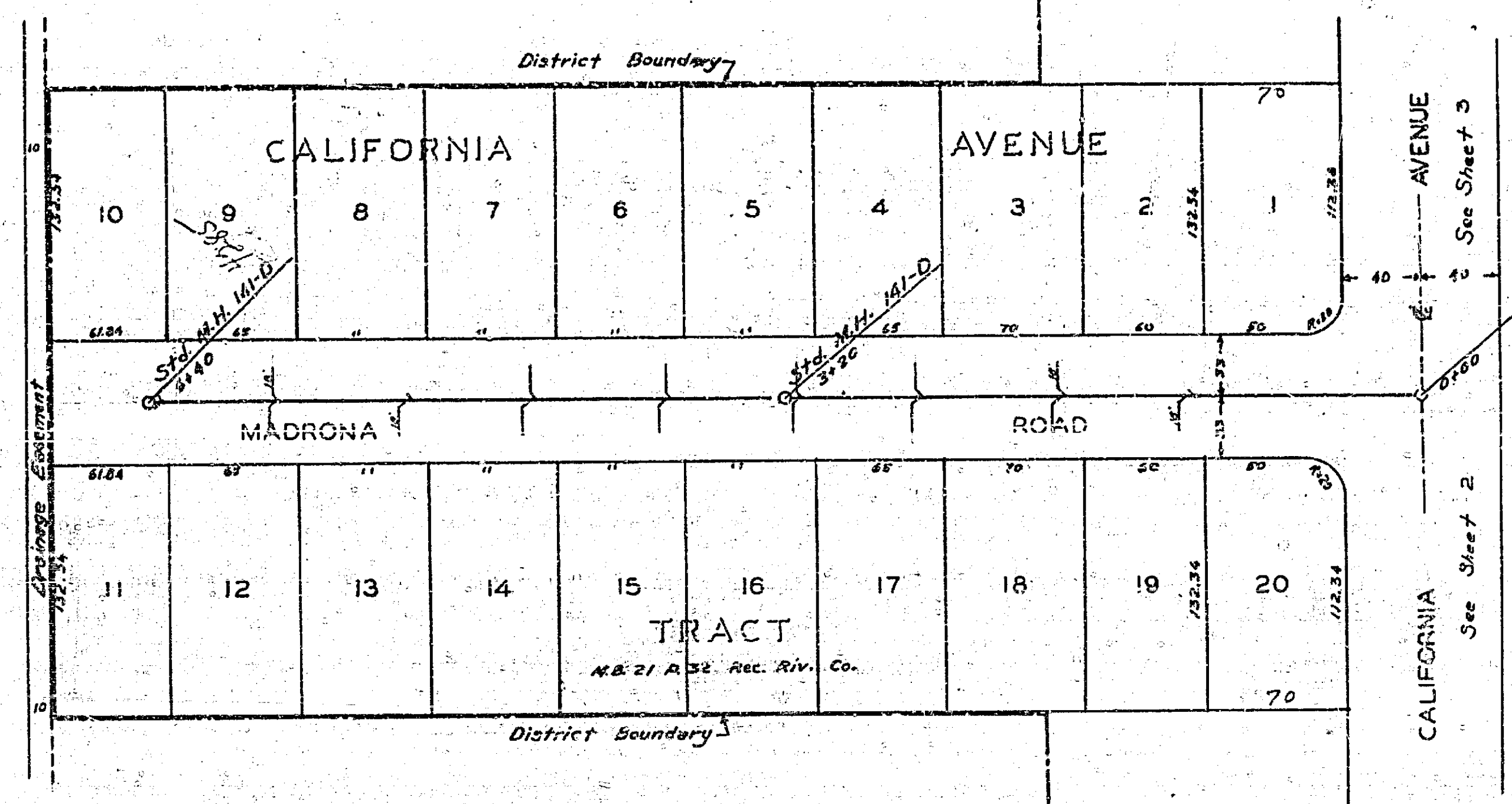
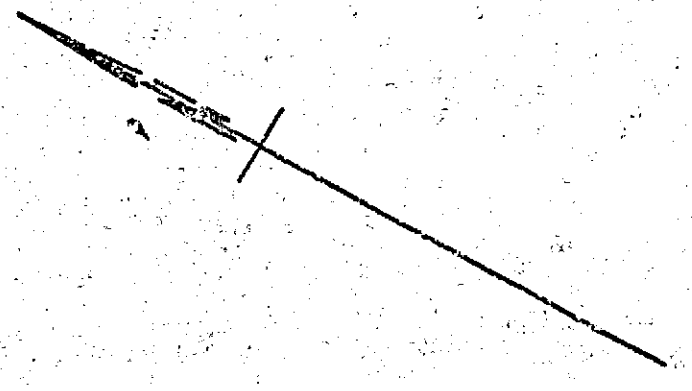
LANDS
M.B. 1 P. 70 Rec. of S.B. Co.



494

PLAN	DATE	BY
PROPOSED		
REVISIONS		
NO.	DATE	BY
1		
2		
3		
4		
5		
6		
7		
8		
9		
10		
11		
12		
13		
14		
15		
16		
17		
18		
19		
20		
21		
22		
23		
24		
25		
26		
27		
28		
29		
30		
31		
32		
33		
34		
35		
36		
37		
38		
39		
40		
41		
42		
43		
44		
45		
46		
47		
48		
49		
50		

PROFILE	DATE	BY
PROPOSED		
REVISIONS		
NO.	DATE	BY
1		
2		
3		
4		
5		
6		
7		
8		
9		
10		
11		
12		
13		
14		
15		
16		
17		
18		
19		
20		
21		
22		
23		
24		
25		
26		
27		
28		
29		
30		
31		
32		
33		
34		
35		
36		
37		
38		
39		
40		
41		
42		
43		
44		
45		
46		
47		
48		
49		
50		



PLAN
 SHEET NO. 4
 DATE 1914
 ENGINEER
 SURVEYOR

PROFILE
 SHEET NO. 4
 DATE 1914
 ENGINEER
 SURVEYOR

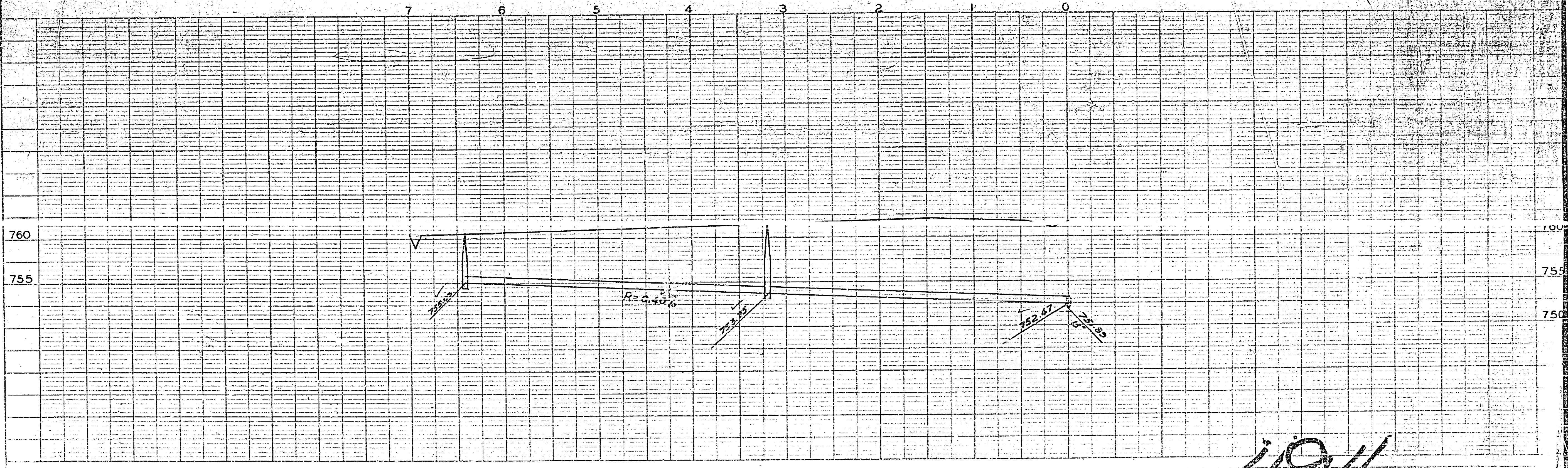


PLATE 11 - PLAN PROFILE C. P. A. & C. ENGINEERS
 100 N. 4TH ST. NEW YORK
 N. Y. C. 100

494