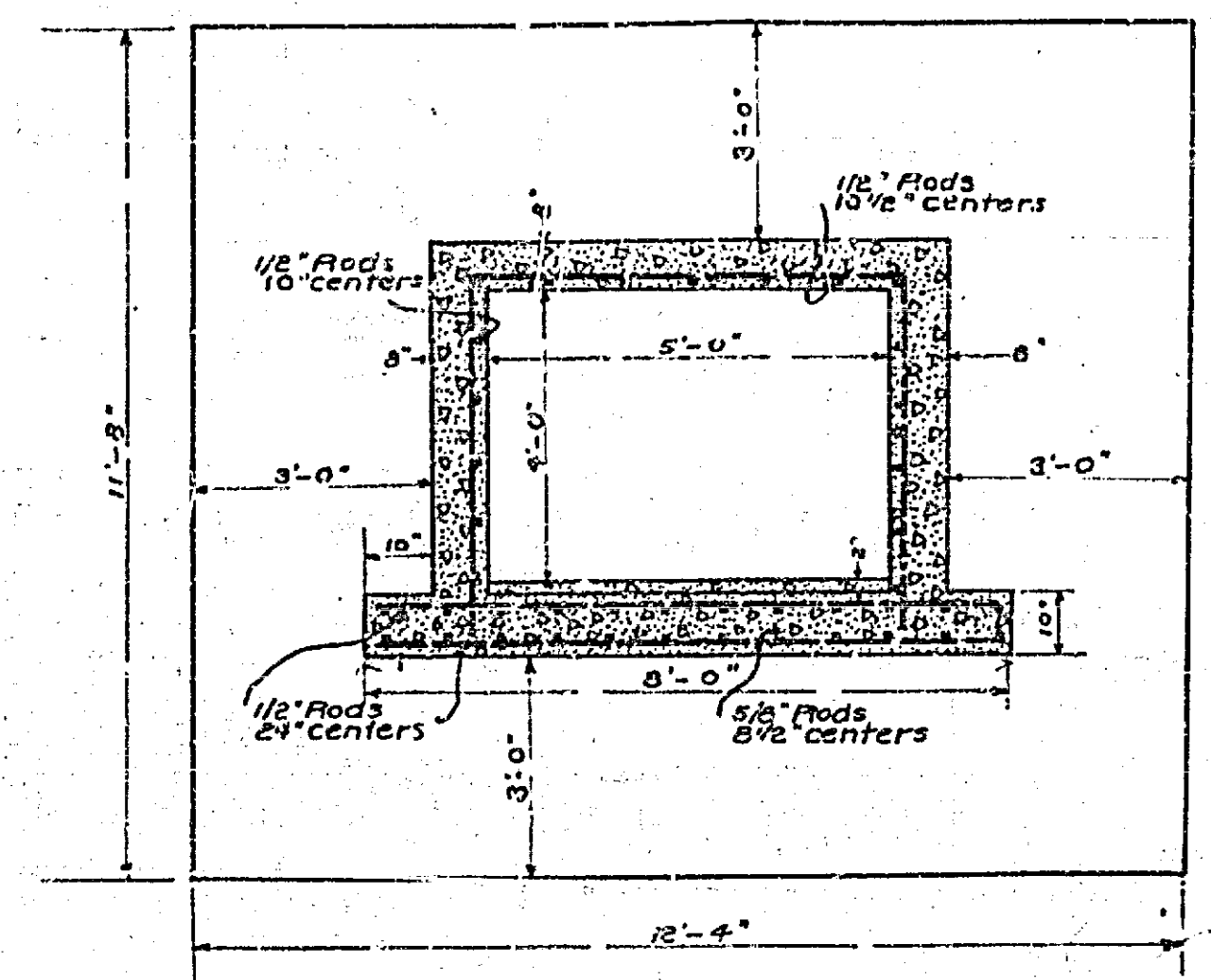
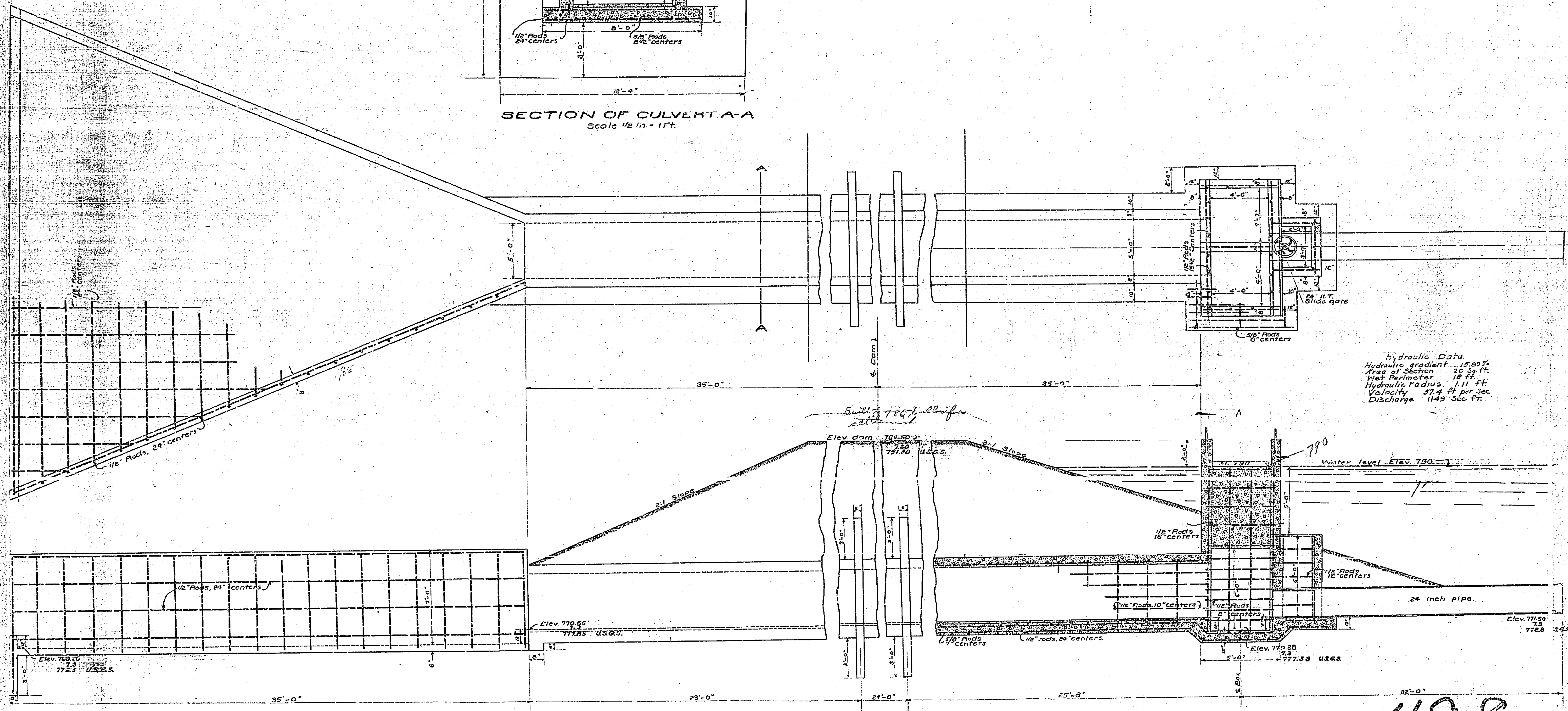


PLAN AND SECTION
 OF CULVERT AND BOX
 TO BE CONSTRUCTED UNDER
 FAIRMOUNT PARK DAM.
 OCTOBER 1923. SCALE 3/8 IN. = 1 FT.



SECTION OF CULVERT A-A
 Scale 1/2 in. = 1 Ft.



Hydraulic Data.
 Hydraulic gradient 15.89%
 Area of Section 20 Sq. ft.
 Wet Perimeter 18 ft.
 Hydraulic Radius 1.11 ft.
 Velocity 37.4 ft per Sec.
 Discharge 1149 Sec. ft.

498