

PROPERTY OF
CITY OF RIVERSIDE
CITY ENGINEERING DEPT.

SHEET 1 OF 5 SHEETS

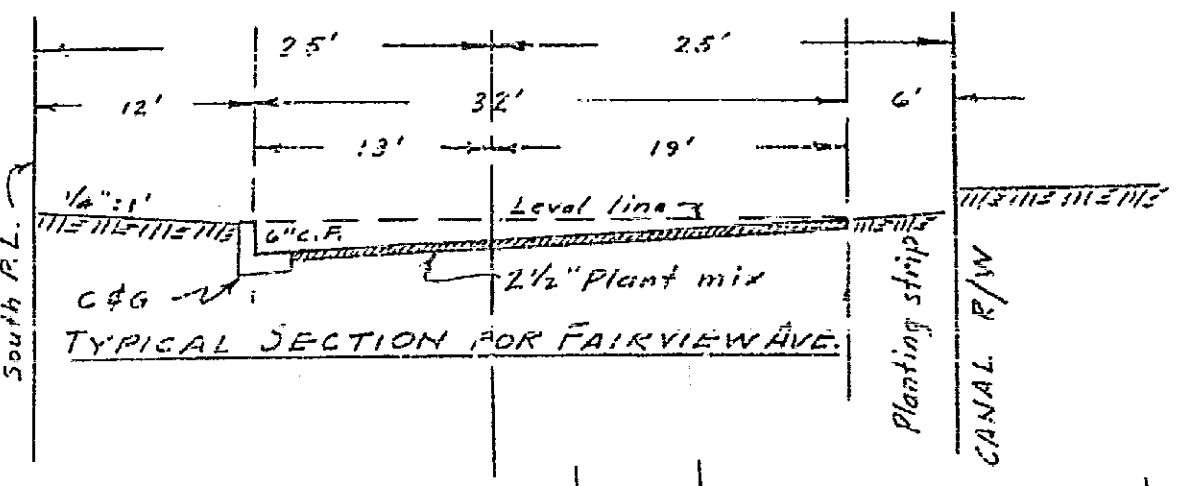
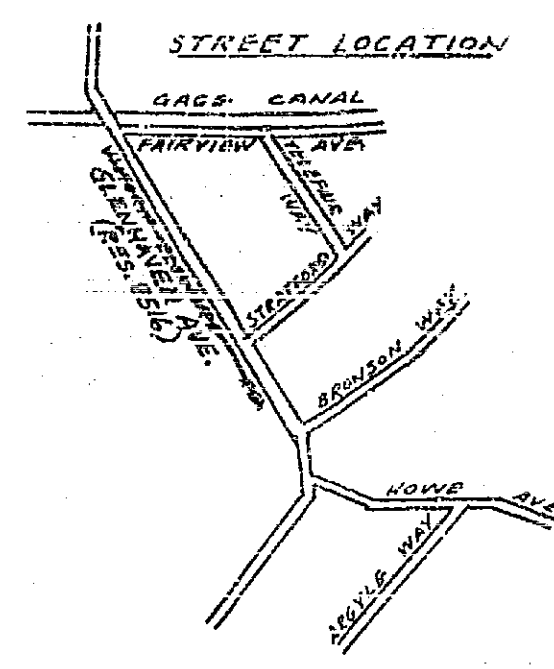
PROPERTY OF
CITY OF RIVERSIDE
CITY ENGINEERING DEPT.

STREET PLAN AND PROFILE OF FAIRVIEW AVENUE IN FAIRVIEW ESTATES CITY OF RIVERSIDE, CALIFORNIA

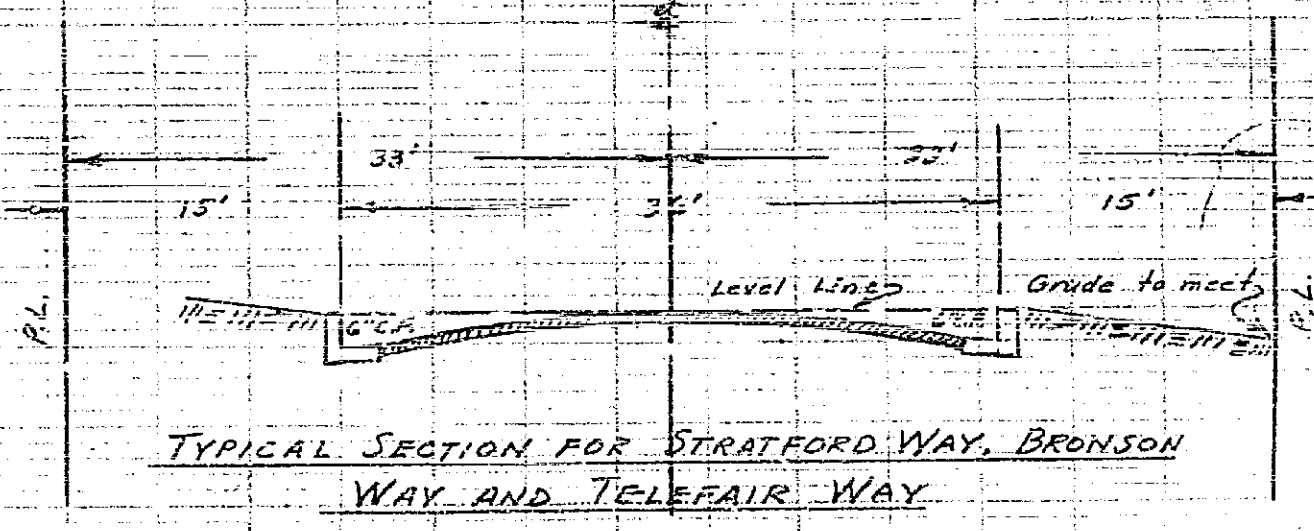
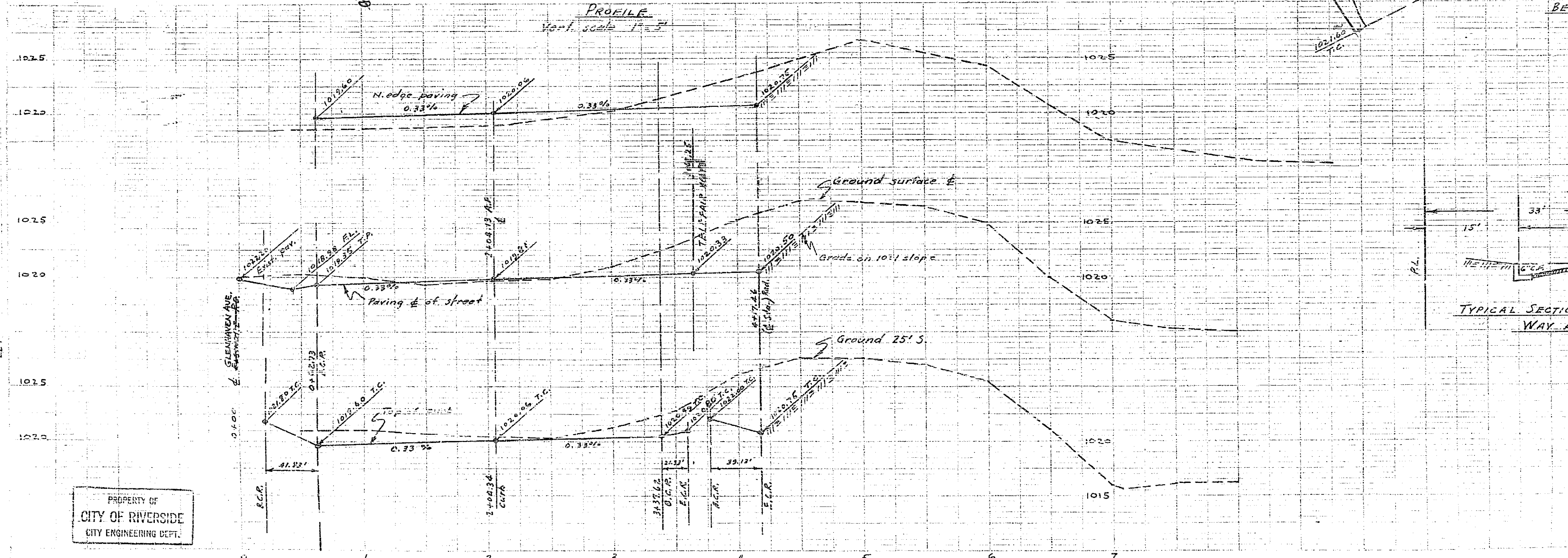
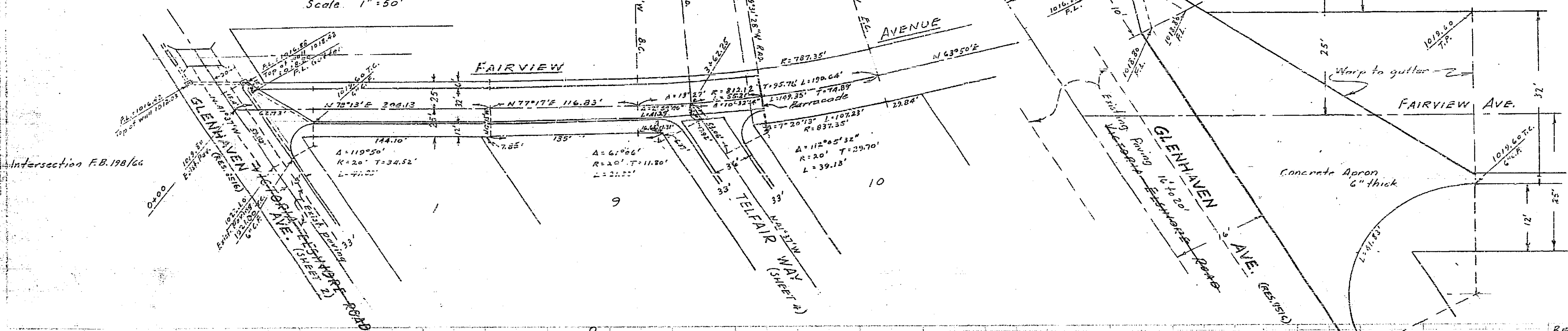
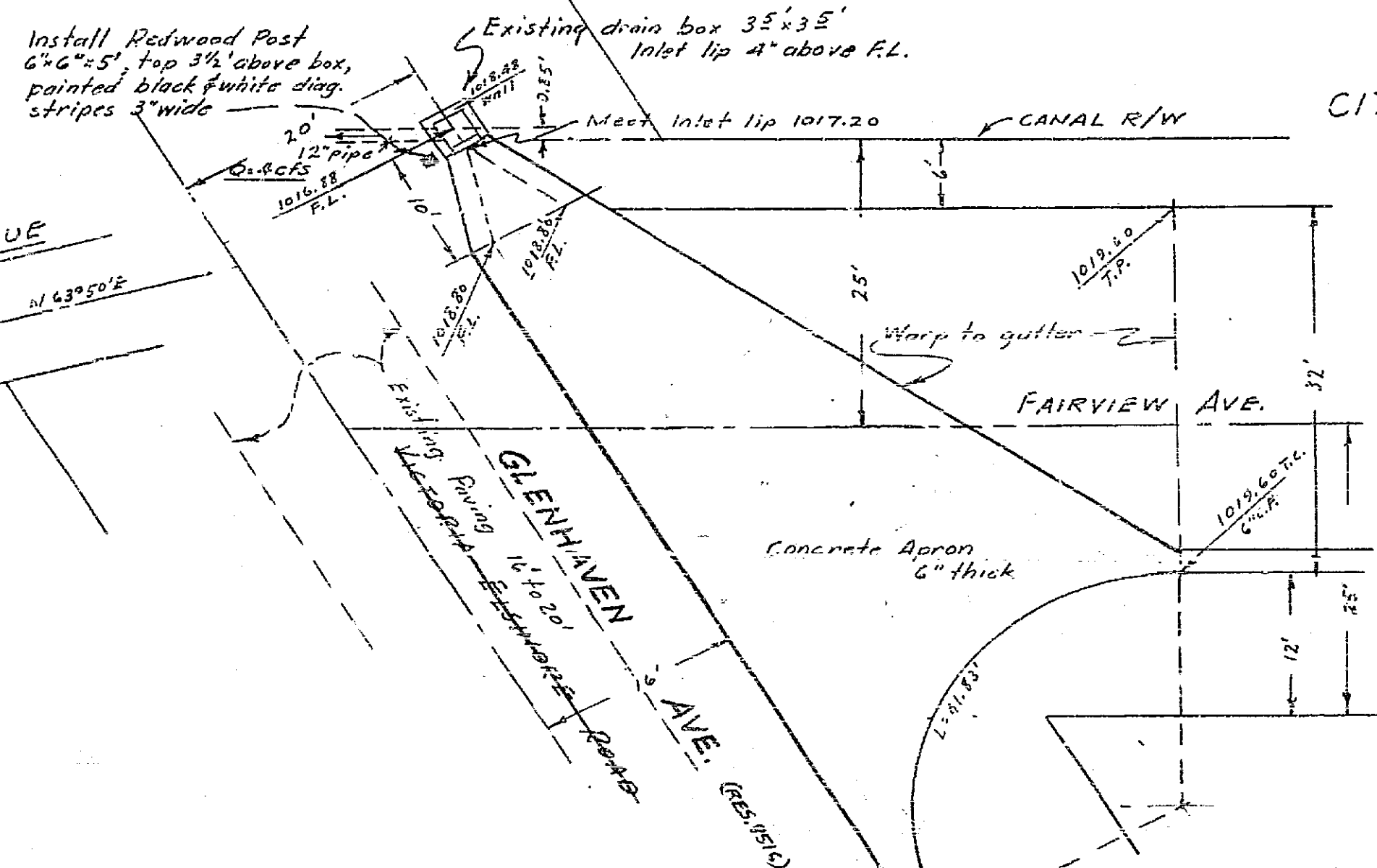
BY
ALBERT A. WEBB ASSOCIATES
CIVIL ENGINEERS DECEMBER 1954
RIVERSIDE, CALIF.

Approved Feb. 21 1955
M. H. Swinn
City Engineer, City of Riverside

BENCH MARK - P.P. 1947J spike, GLLENHAVEN AVENUE & ARROYO DR. - 978.25
X.S.E. COR. GAGE CANAL BRIDGE - 1018.51



DETAIL OF INTERSECTION
1" = 10'



PROPERTY OF
CITY OF RIVERSIDE
CITY ENGINEERING DEPT.

PROPERTY OF
CITY OF RIVERSIDE
CITY ENGINEERING DEPT.

4-A

PROPERTY OF
CITY OF RIVERSIDE
CITY ENGINEERING DEPT.

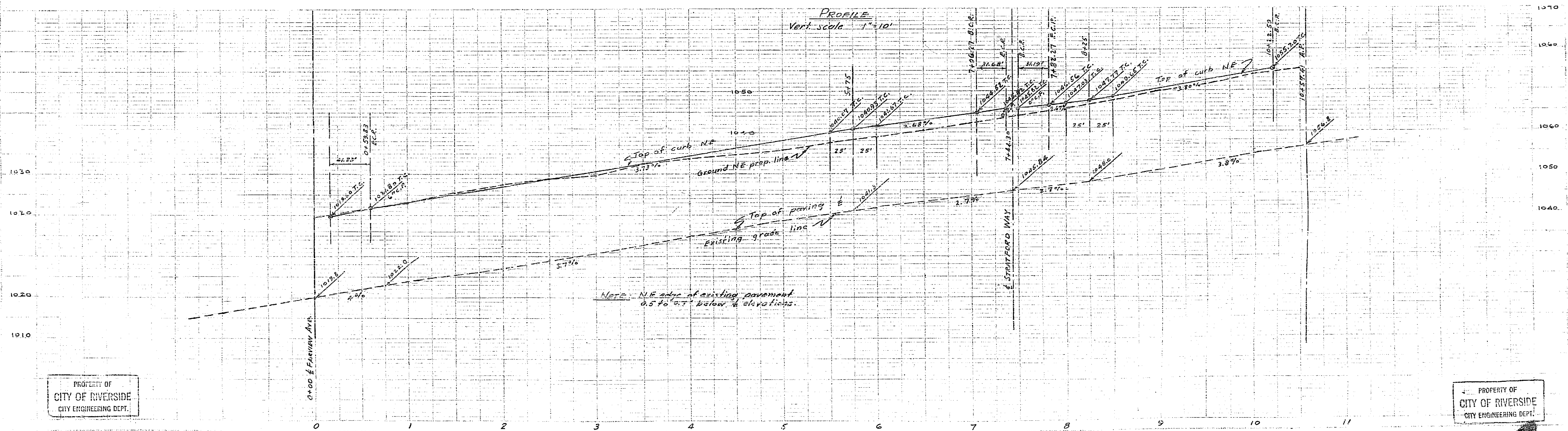
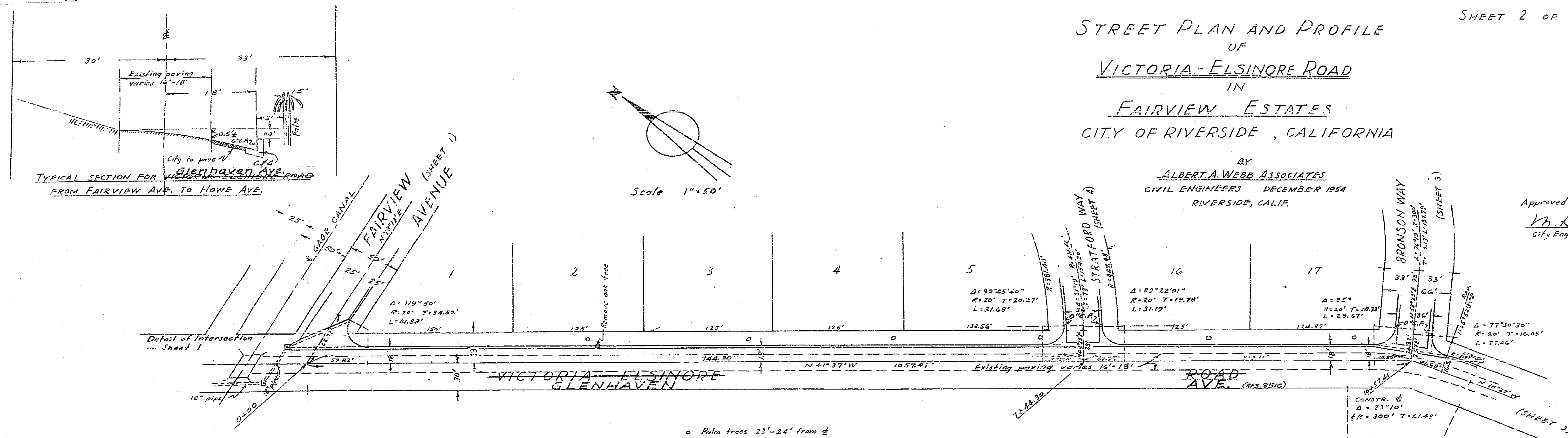
SHEET 2 OF 5 SHEETS

PROPERTY OF
CITY OF RIVERSIDE
CITY ENGINEERING DEPT.

STREET PLAN AND PROFILE
OF
VICTORIA-ELSINORE ROAD
IN
FAIRVIEW ESTATES
CITY OF RIVERSIDE, CALIFORNIA

BY
ALBERTA WEBB ASSOCIATES
CIVIL ENGINEERS DECEMBER 1954
RIVERSIDE, CALIF.

Approved Feb. 21, 1955
M. H. Swain
City Engineer, City of Riverside



PROPERTY OF
CITY OF RIVERSIDE
CITY ENGINEERING DEPT.

PROPERTY OF
CITY OF RIVERSIDE
CITY ENGINEERING DEPT.

4A

PROPERTY OF
CITY OF RIVERSIDE
CITY ENGINEERING DEPT.

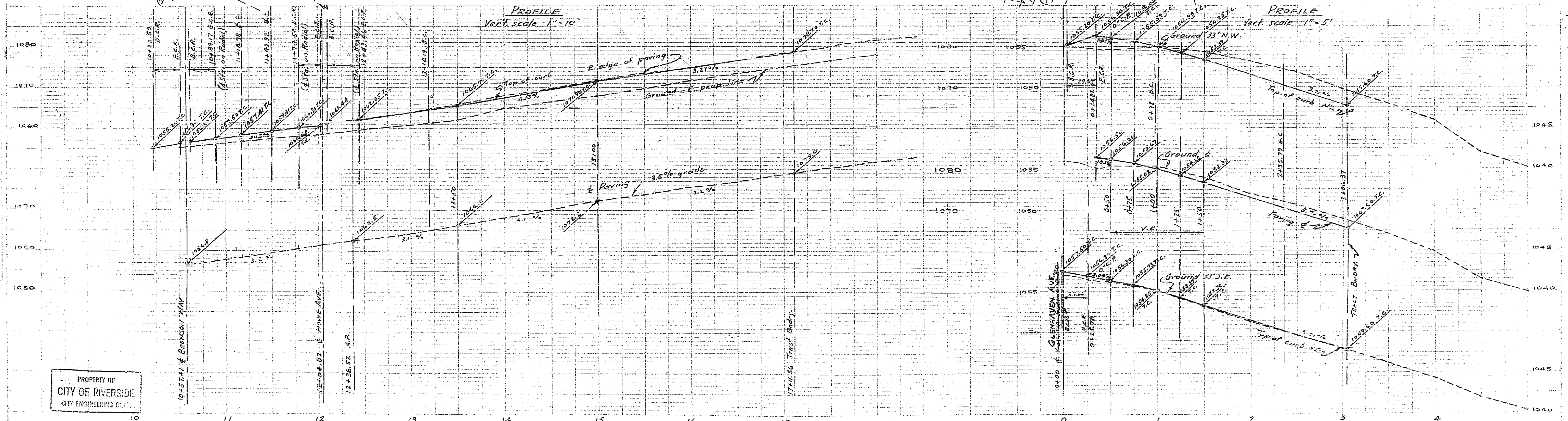
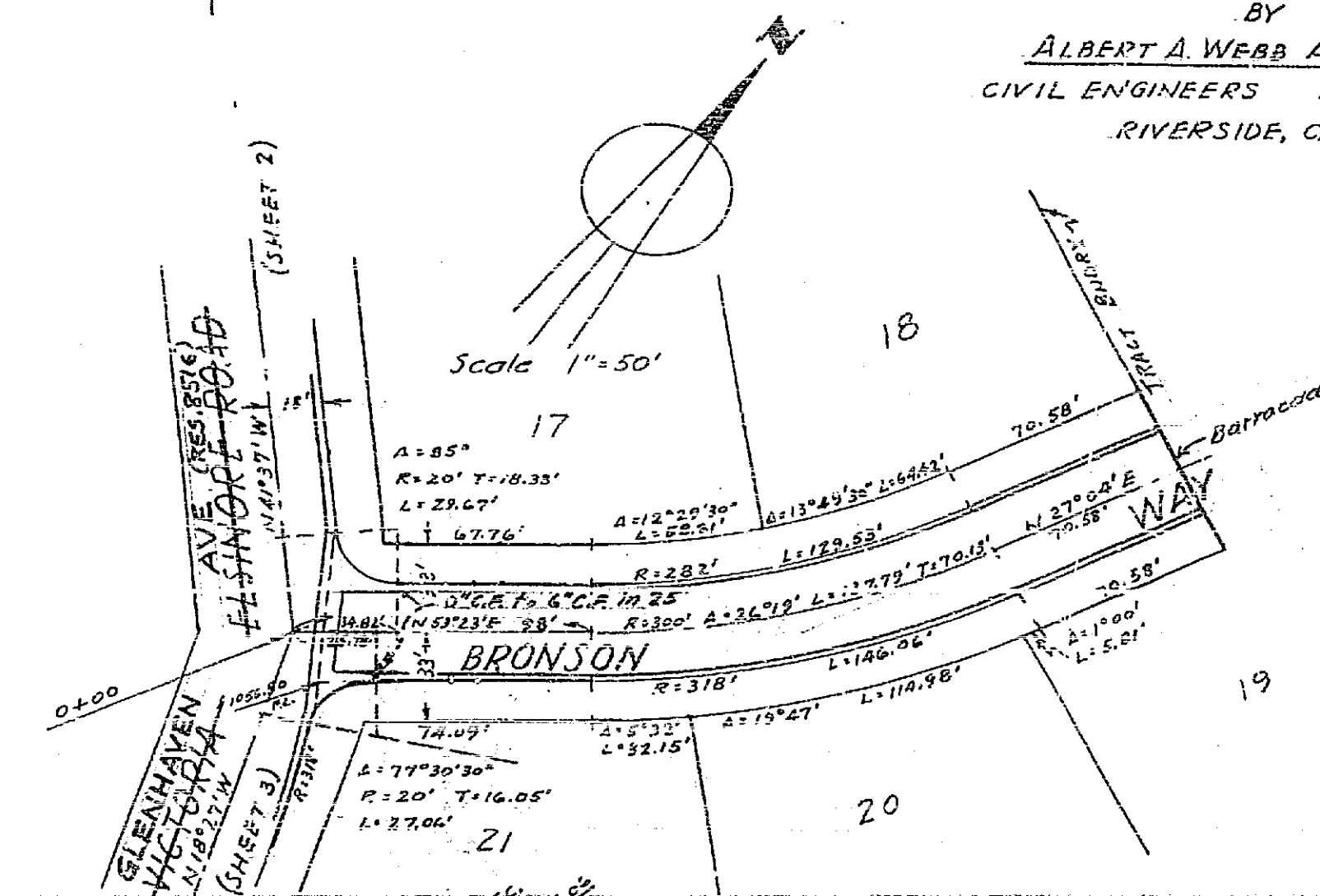
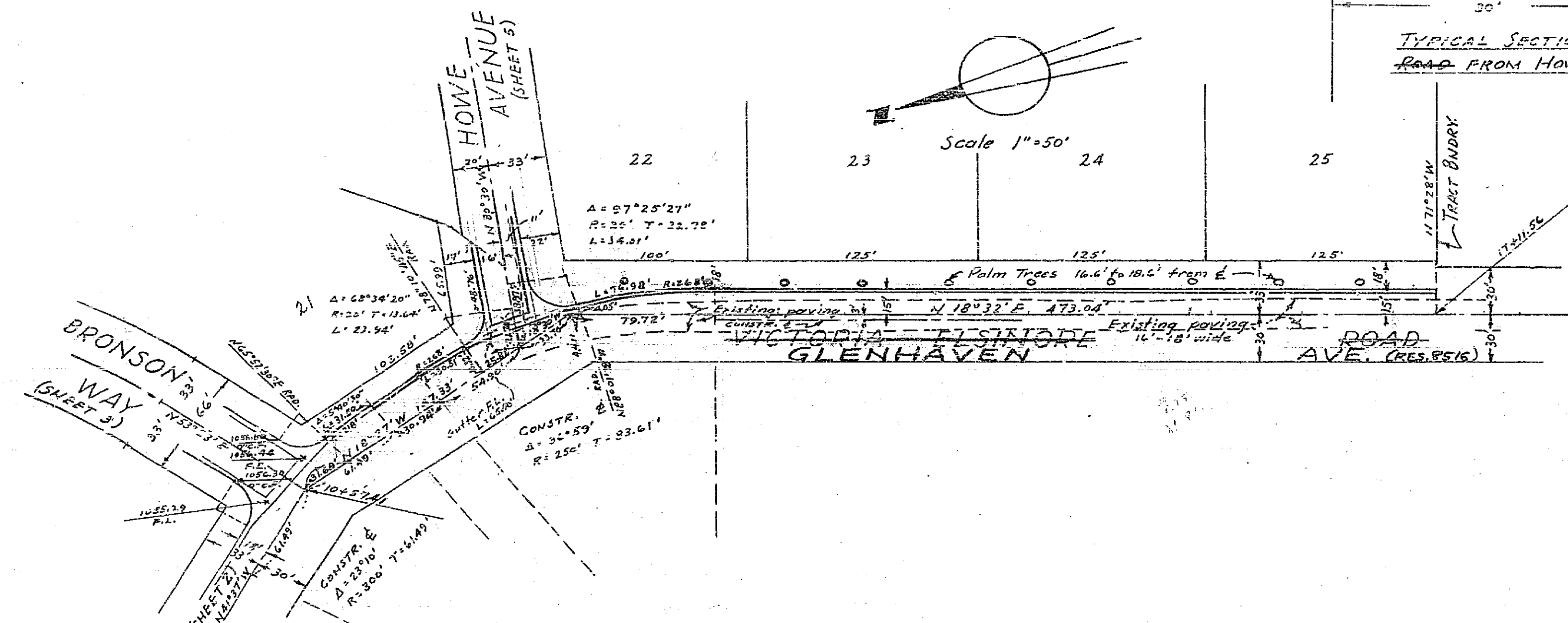
STREET PLAN AND PROFILE GLENHAVEN AVE. OF VICTORIA-ELSINORE ROAD AND BRONSON WAY IN FAIRVIEW ESTATES CITY OF RIVERSIDE, CALIFORNIA

BY
ALBERT A. WEAB ASSOCIATES
CIVIL ENGINEERS DECEMBER 1954
RIVERSIDE, CALIF.

PROPERTY OF
CITY OF RIVERSIDE
CITY ENGINEERING DEPT.

Approved Feb. 21, 1955

M. H. Swine
City Engineer, City of Riverside



4-A PROPERTY OF
CITY OF RIVERSIDE
CITY ENGINEERING DEPT.

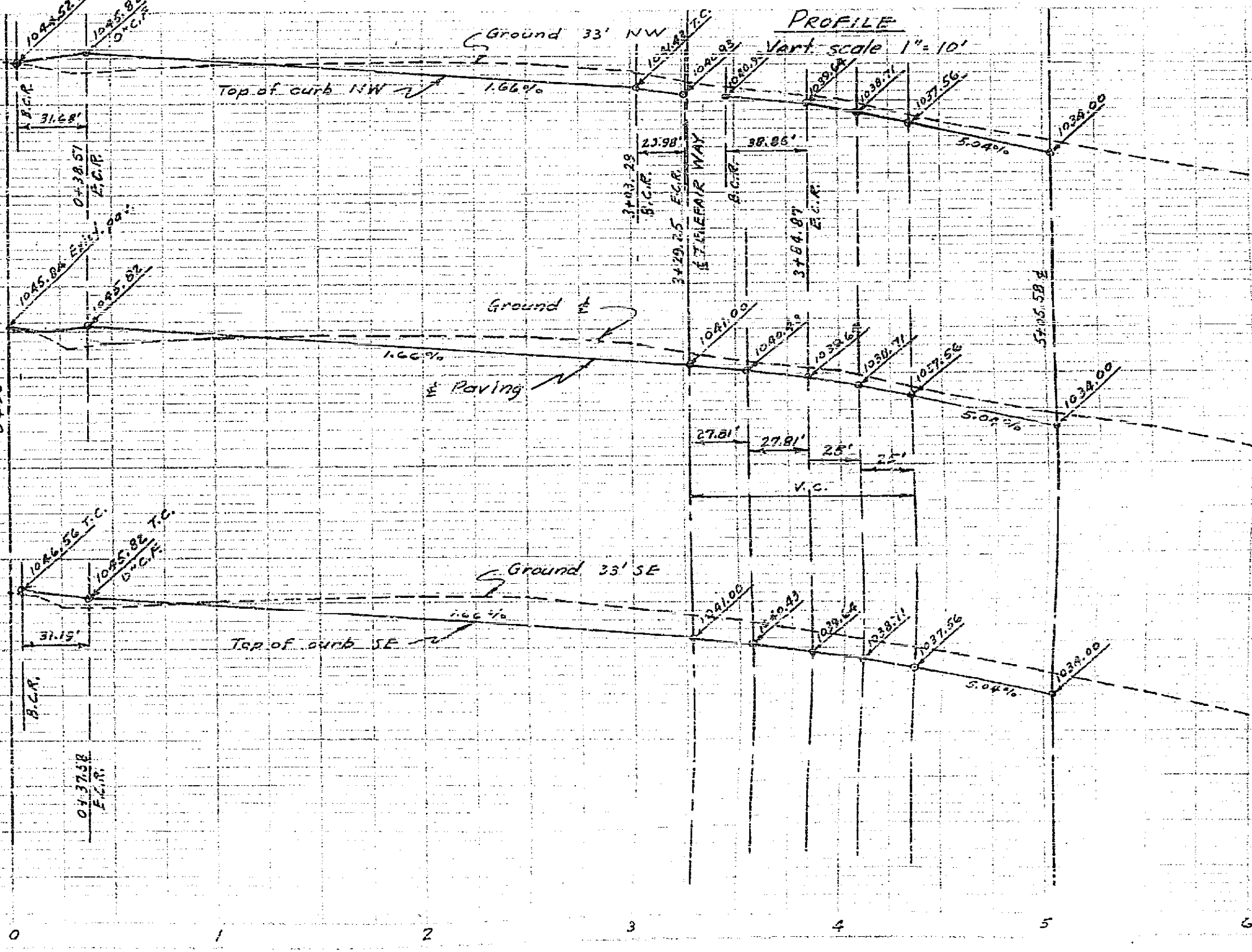
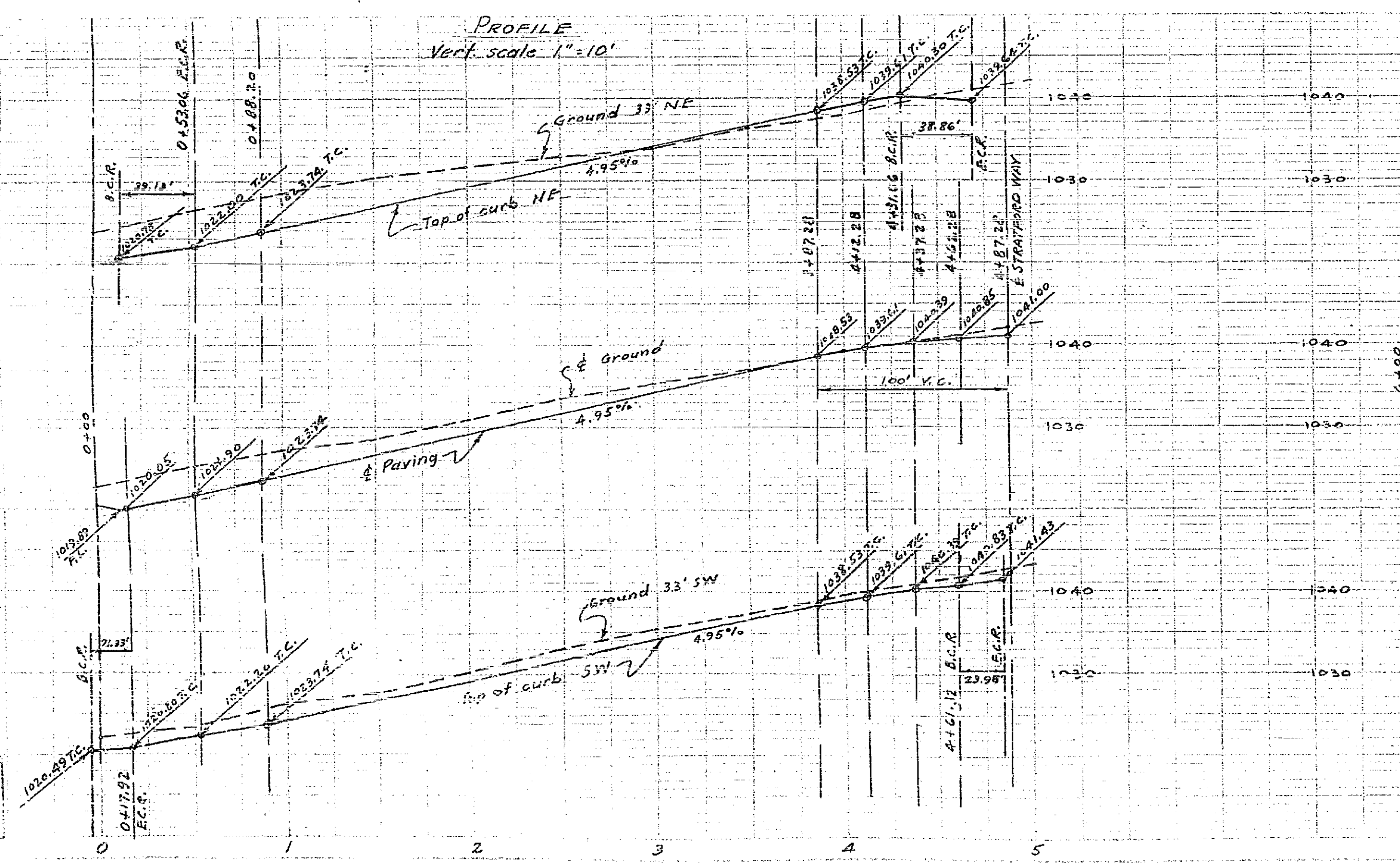
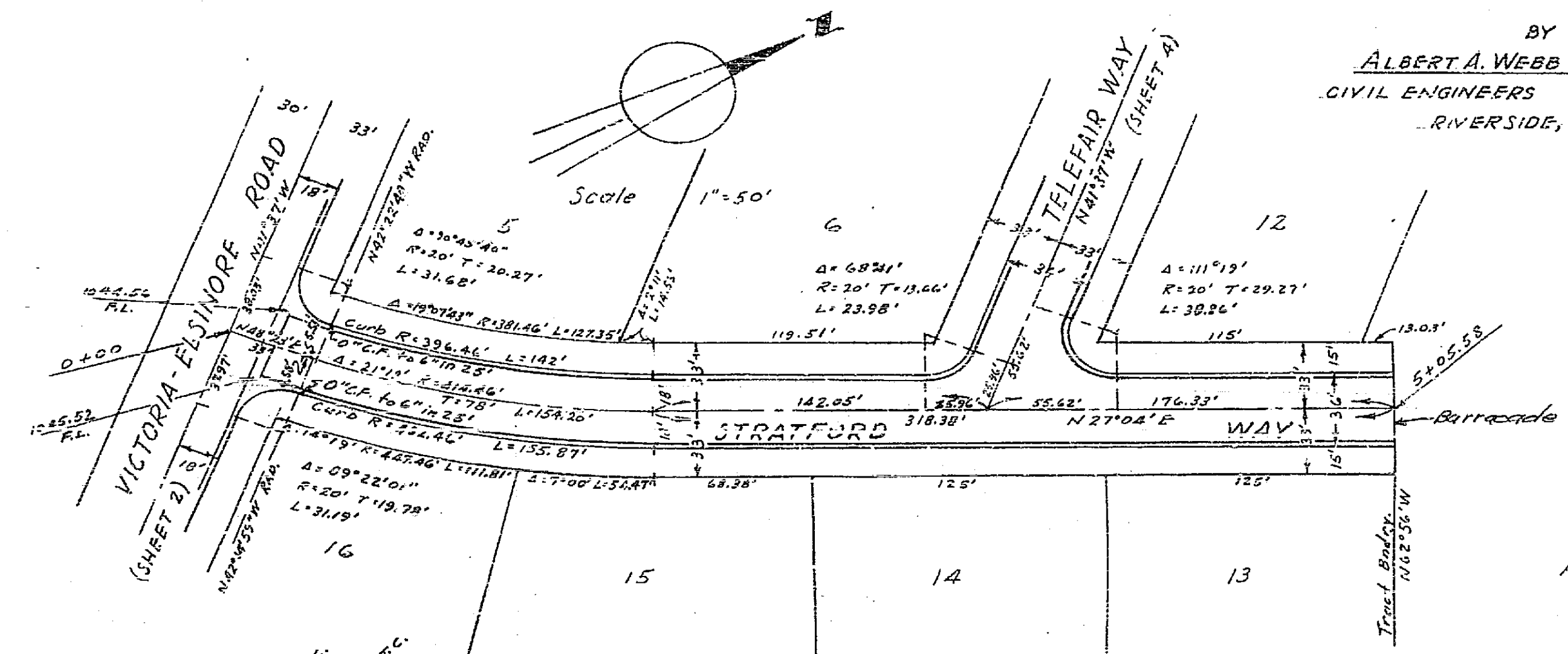
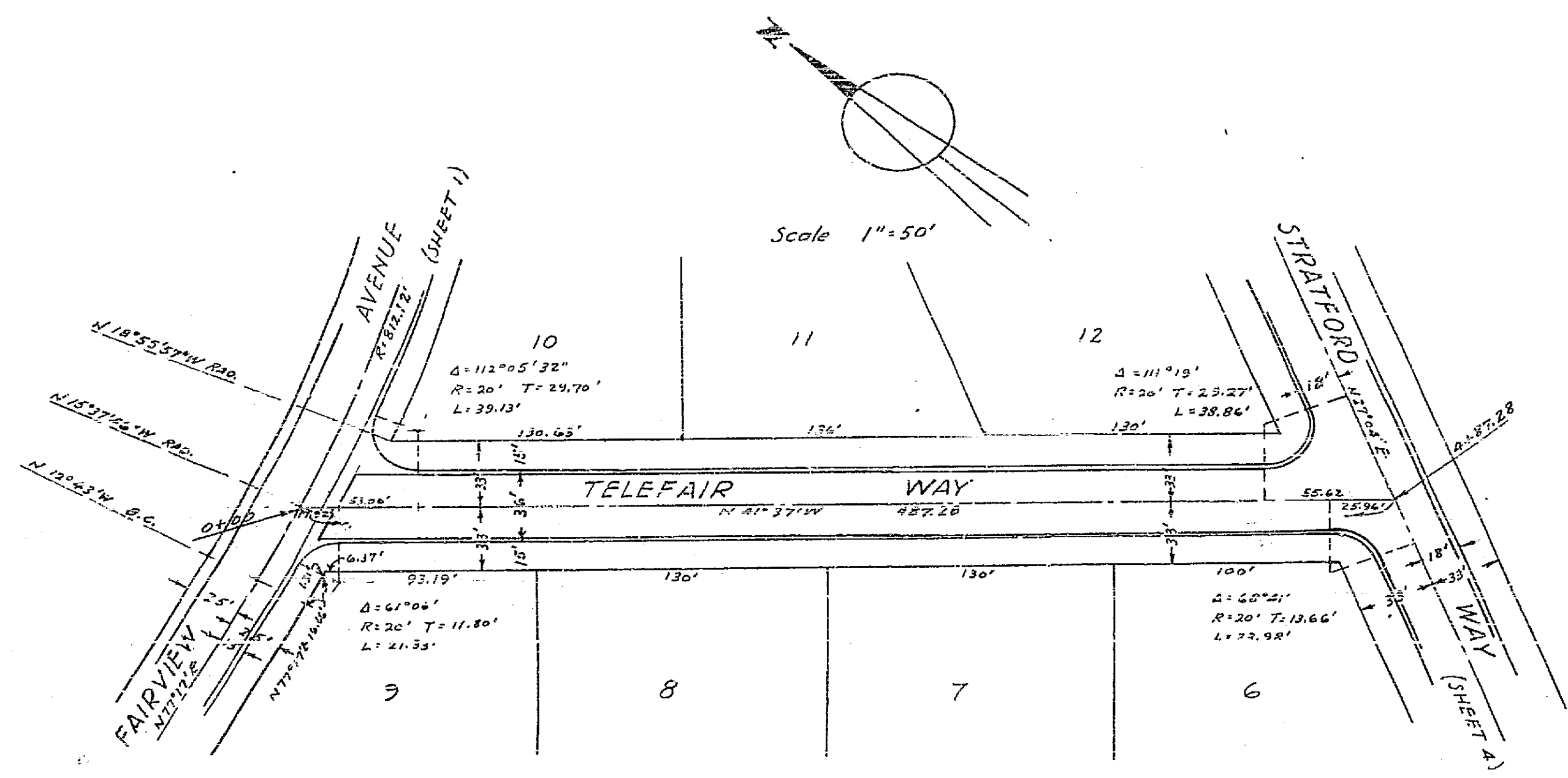
STREET PLAN AND PROFILE OF TELEFAIR WAY AND STRATFORD WAY IN FAIRVIEW ESTATES CITY OF RIVERSIDE, CALIFORNIA

BY ALBERT A. WEBB ASSOCIATES CIVIL ENGINEERS DECEMBER 1954 RIVERSIDE, CALIF.

PROPERTY OF CITY OF RIVERSIDE CITY ENGINEERING DEPT.

Approved Feb. 21, 1955 M. N. Irvine, City Engineer, City of Riverside

PROPERTY OF CITY OF RIVERSIDE CITY ENGINEERING DEPT.



PROPERTY OF CITY OF RIVERSIDE CITY ENGINEERING DEPT.

PROPERTY OF CITY OF RIVERSIDE CITY ENGINEERING DEPT.

4-A

PROPERTY OF
CITY OF RIVERSIDE
CITY ENGINEERING DEPT.

SHEET 5 OF 5 SHEETS

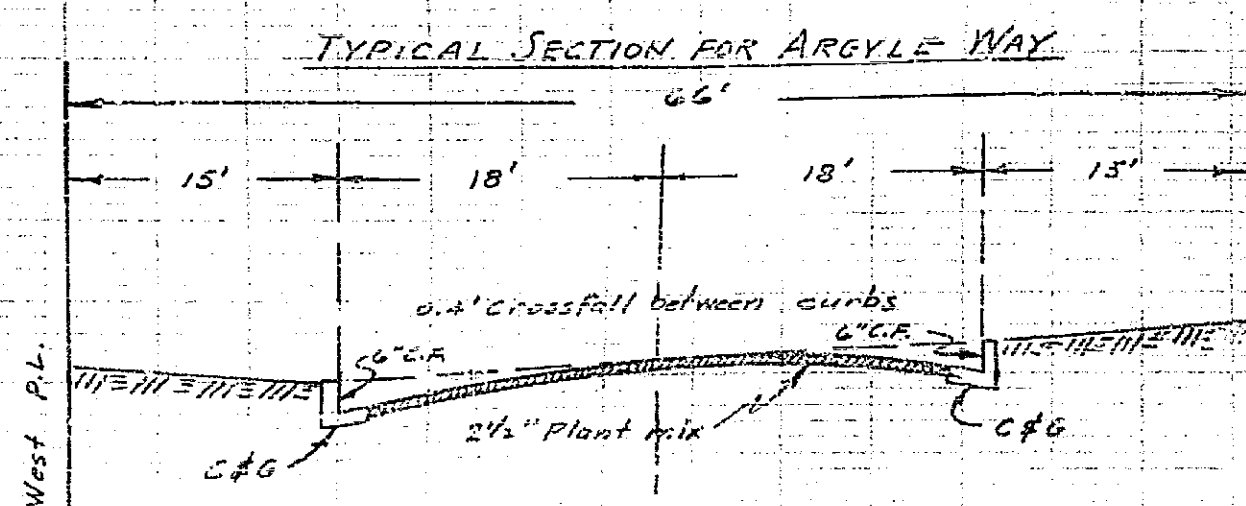
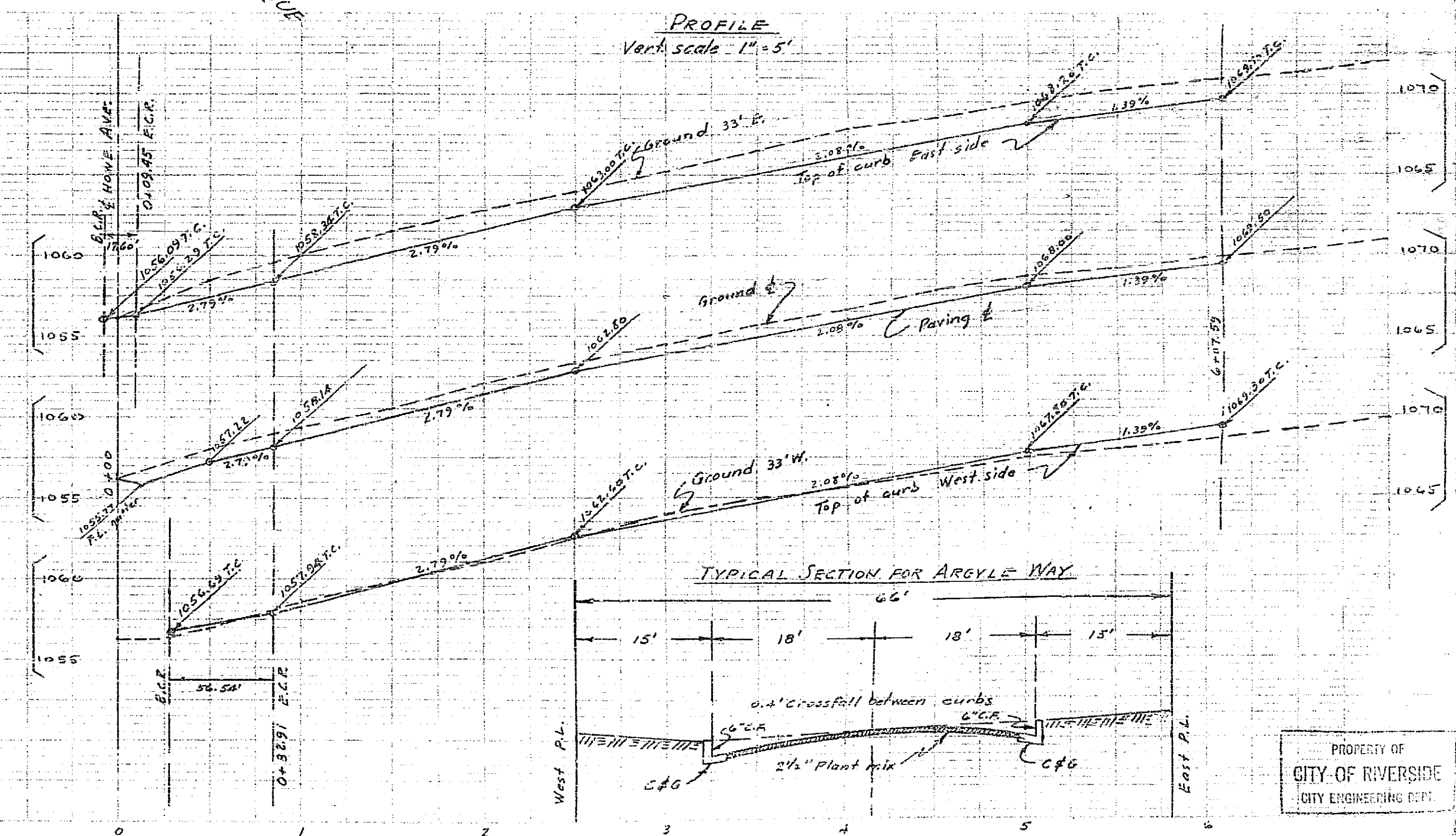
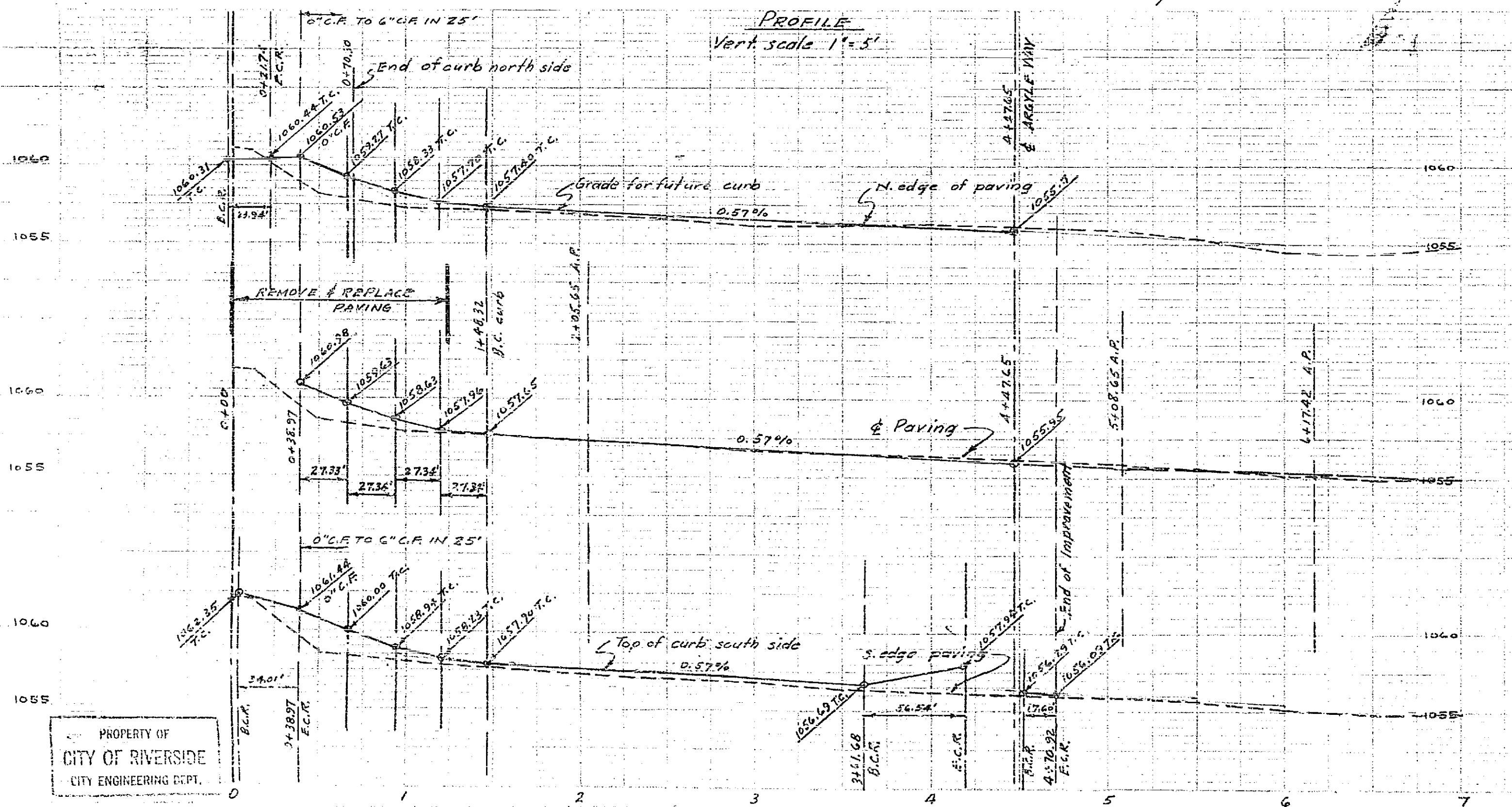
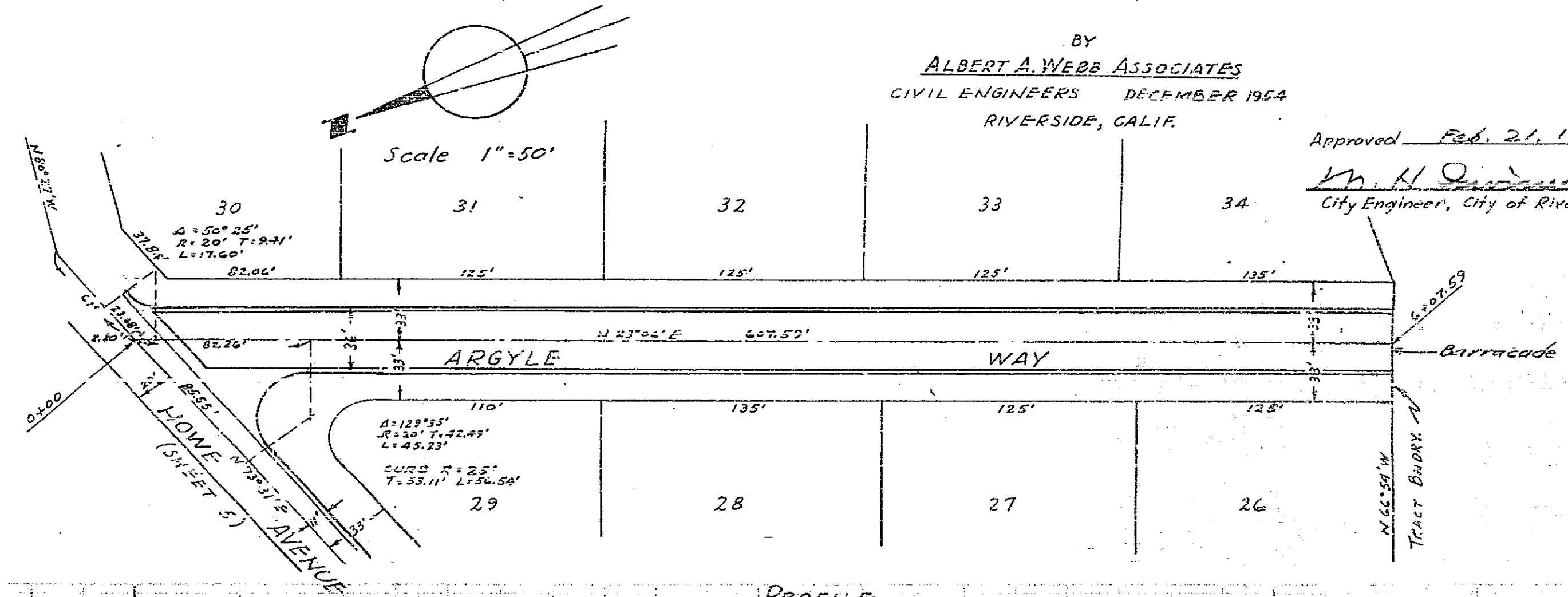
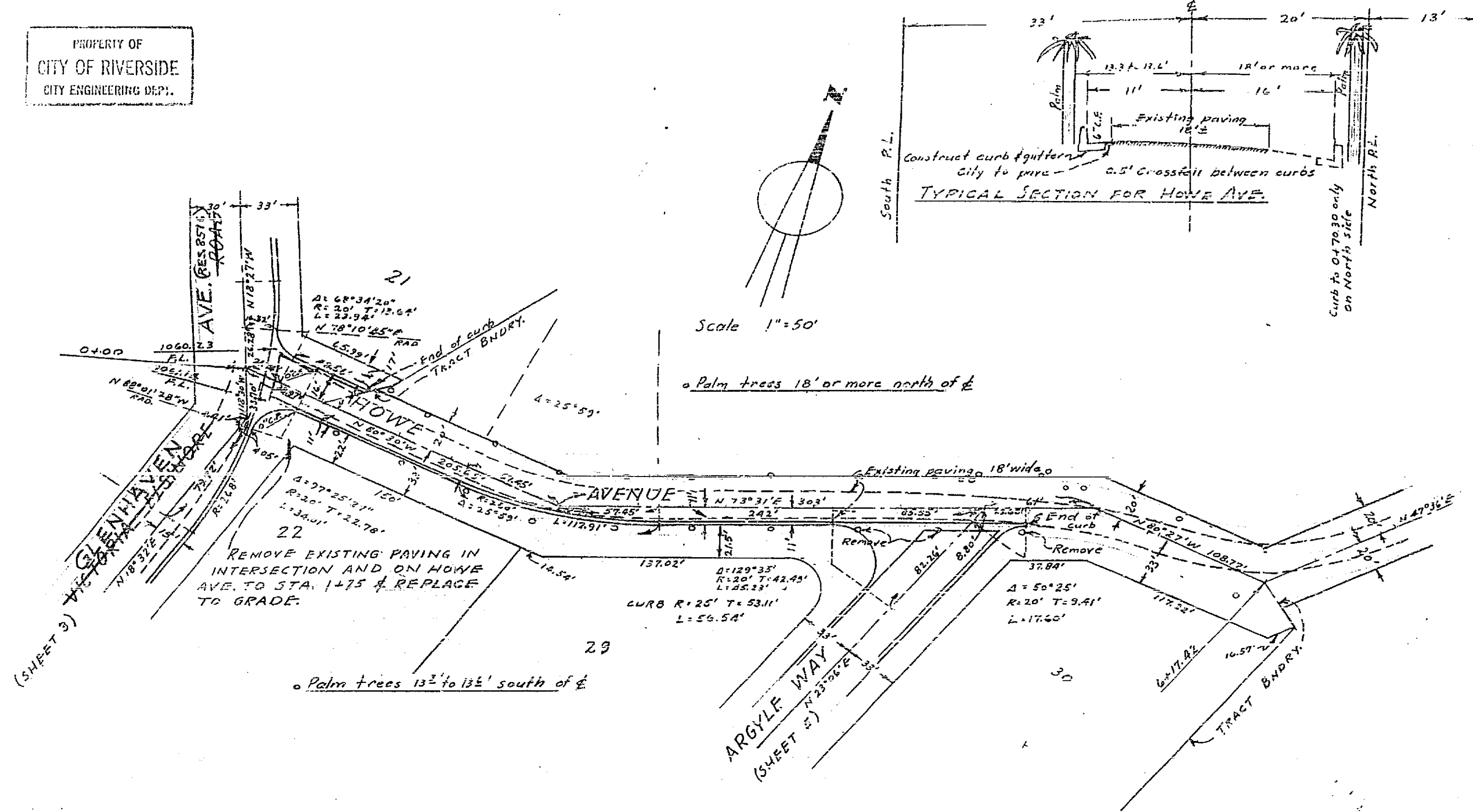
PROPERTY OF
CITY OF RIVERSIDE
CITY ENGINEERING DEPT.

STREET PLAN AND PROFILE OF HOWE AVENUE AND ARGYLE WAY IN FAIRVIEW ESTATES CITY OF RIVERSIDE, CALIFORNIA

BY
ALBERT A. WEBB ASSOCIATES
CIVIL ENGINEERS DECEMBER 1954
RIVERSIDE, CALIF.

Approved Feb. 21, 1955

M. H. Quinn
City Engineer, City of Riverside



PROPERTY OF
CITY OF RIVERSIDE
CITY ENGINEERING DEPT.

PROPERTY OF
CITY OF RIVERSIDE
CITY ENGINEERING DEPT.

4-A